

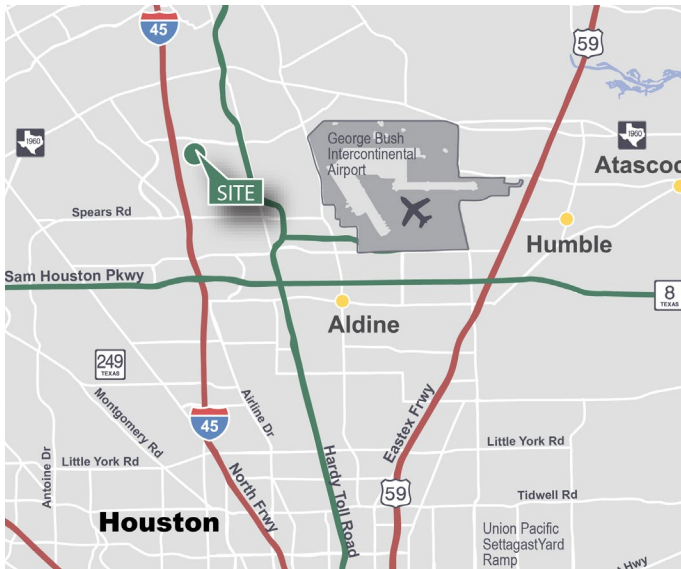
62,252 SF

Industrial Space For Lease



Prologis Northpark 4

600 Northpark Central Drive
Houston, TX 77073 USA



LOCATION

- Conveniently located along I-45 North between Airtex Drive and Richey Road
- Easy access to I-45, Beltway 8 and the Hardy Toll Road
- Part of the master planned Prologis Park Northpark
- Unincorporated Harris County
- Double Freeport tax exemption

FACILITY

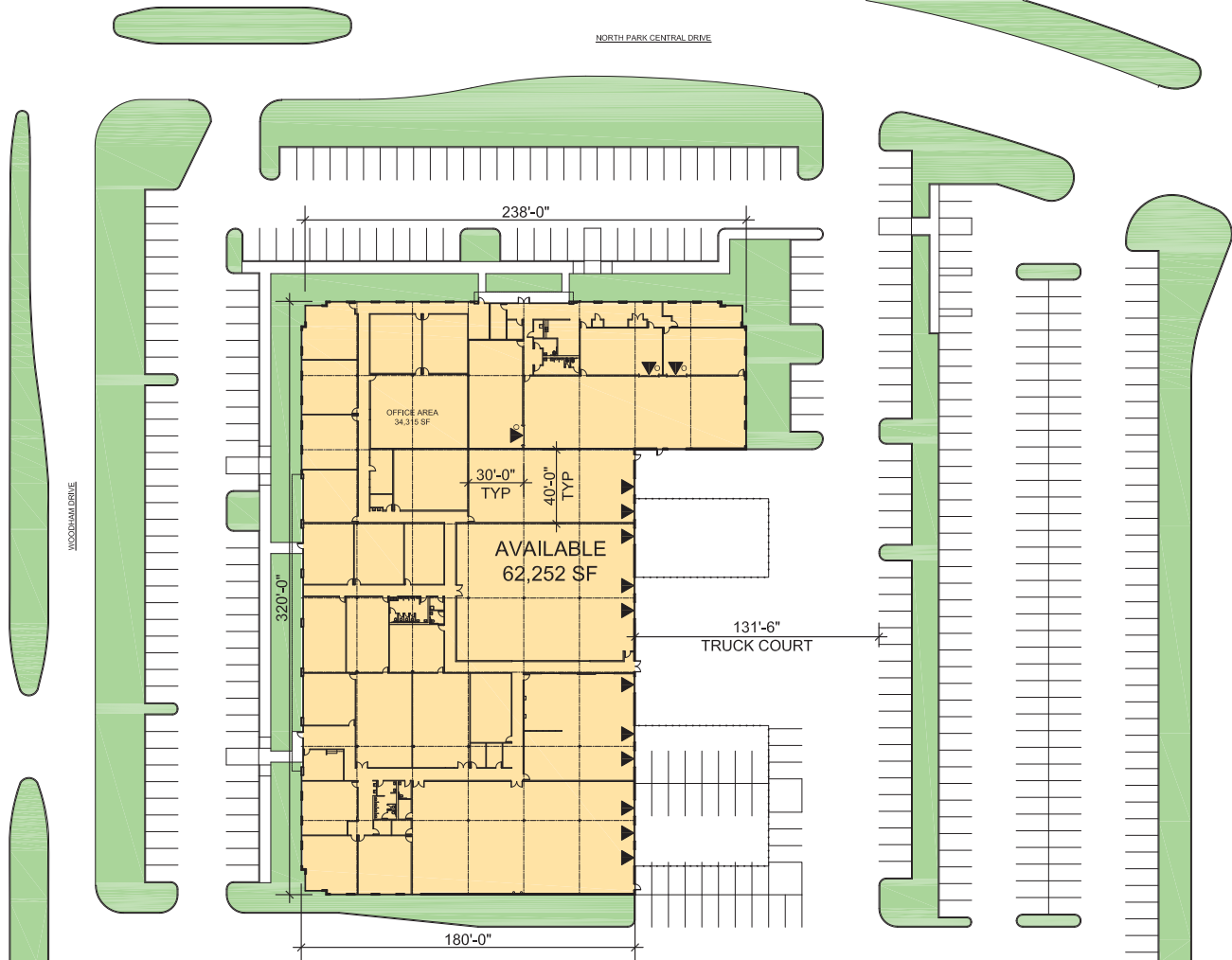
- 62,252 SF available
- Divisible to 11,711 SF, 14,590 SF, and 35,951 SF
- 34,315 SF of office
- 18' clear height
- 11 dock-high doors / 3 ramps
- 30' x 40' column spacing

ADVANTAGES AND AMENITIES

- Sprinklered
- HVAC warehouse
- Former Mercedes Benz advanced training facility

62,252 SF

Industrial Space For Lease



Cushman & Wakefield

Jason Dillee

jason.dillee@cushwake.com

ph +1 713 345 1432

cell +1 832 741 0733

1330 Post Oak Blvd, Suite 2700

Houston, TX 77056 USA

Cushman & Wakefield

Nathan Wynne

nathan.wynne@cushwake.com

ph +1 713 331 1431

cell +1 713 206 3881

1330 Post Oak Blvd, Suite 2700

Houston, TX 77056 USA

Prologis

Alicia Pillows

anye@prologis.com

ph +1 713 613 6930

cell +1 713 409 1306

1296 North Post Oak Road

Houston, TX 77055 USA