

# 3101 PARK BOULEVARD, PALO ALTO

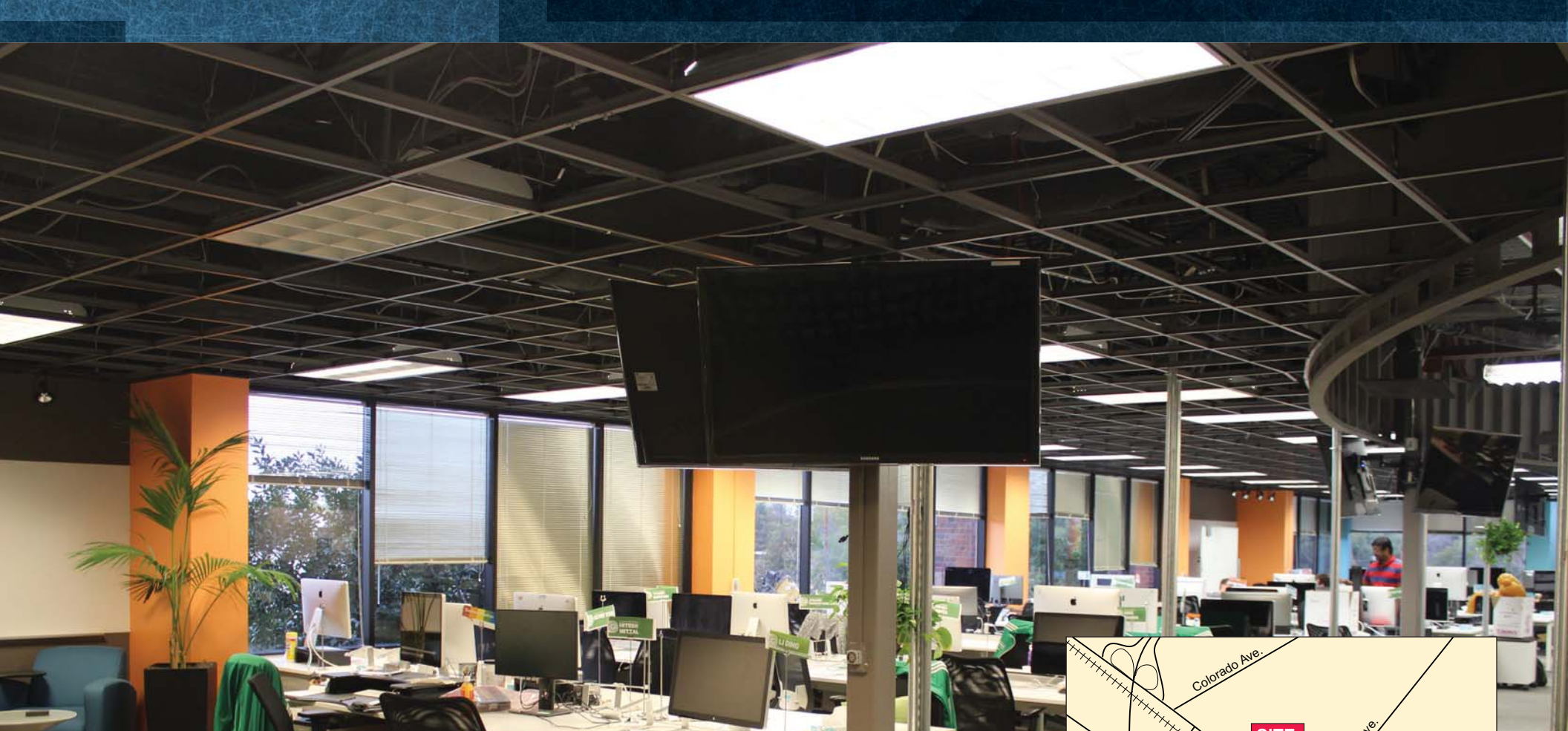
## OFFICE SPACE FOR LEASE



The distributor of this communication is performing acts for which a real estate license is required. The information contained herein has been obtained from sources deemed reliable but has not been verified and no guarantee, warranty or representation, either express or implied, is made with respect to such information. Terms of sale or lease and availability are subject to change or withdrawal without notice. 18-0357.03/18

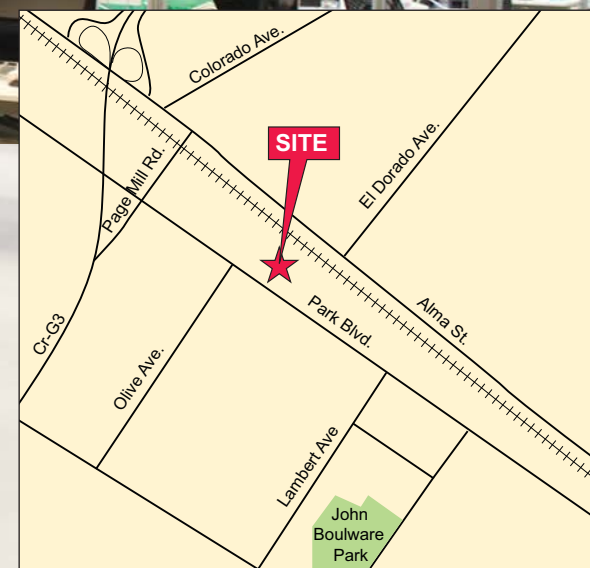
**BRAD LYMAN** 650.688.8555 [blyman@ngkf.com](mailto:blyman@ngkf.com) CA RE License #00712292  
245 Lytton Avenue, Suite 150, Palo Alto, California 94301





## PROPERTY HIGHLIGHTS

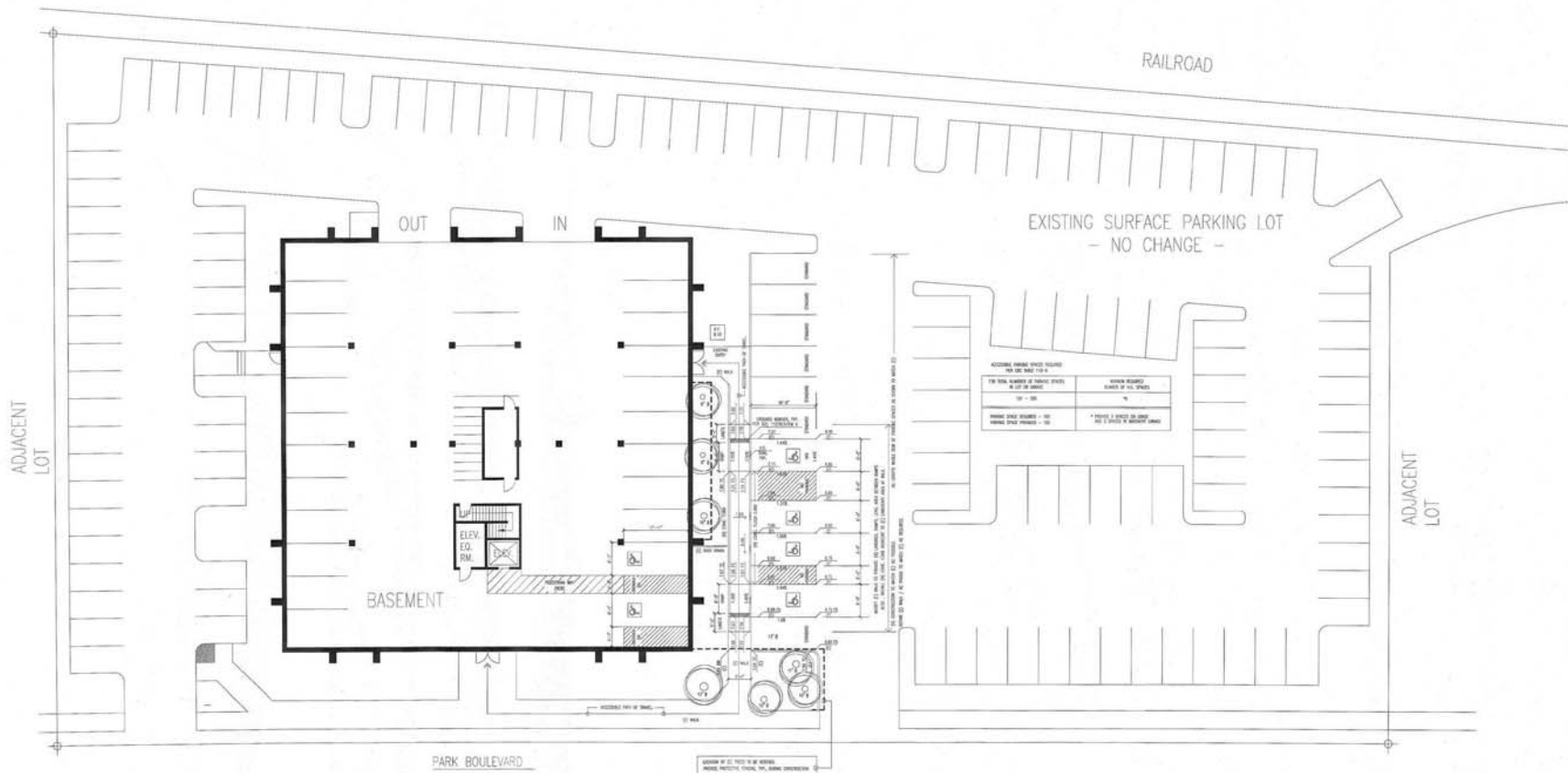
- ±40,000 SF Available
- Three Story Office Building
- Open Ceiling/Open Office Layout
- Distinct Top of Building Signage
- Short walk to Caltrain
- Underground Secured Parking - 25 Spaces
- 4/1000 Parking
- Cafeteria Services the Building
- Raised Floor Server Room
- Near California Avenue Retail and Services
- Easy Access to both Highways 101 and 280
- Available January 1, 2019 (Possibly Sooner)



# 3101 PARK BOULEVARD

**BRAD LYMAN** 650.688.8555 [blyman@ngkf.com](mailto:blyman@ngkf.com) CA RE License #00712292  
245 Lytton Avenue, Suite 150, Palo Alto, California 94301

## SITE PLAN



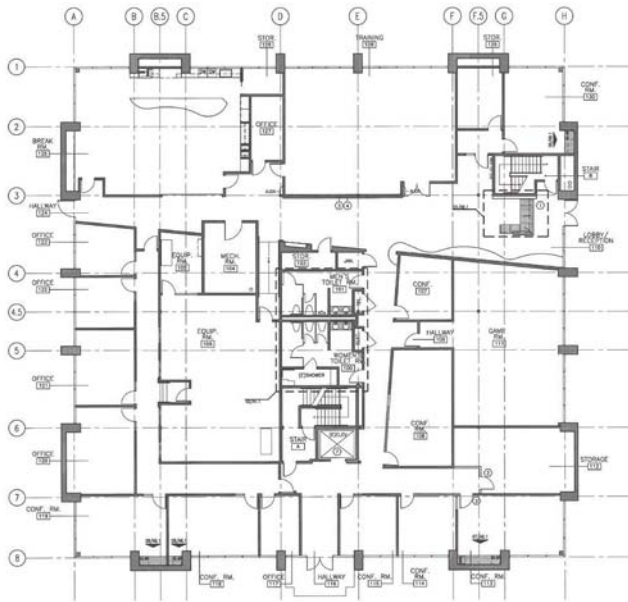
# 3101 PARK BOULEVARD

**BRAD LYMAN** 650.688.8555 [blyman@ngkf.com](mailto:blyman@ngkf.com) CA RE License #00712292  
245 Lytton Avenue, Suite 150, Palo Alto, California 94301

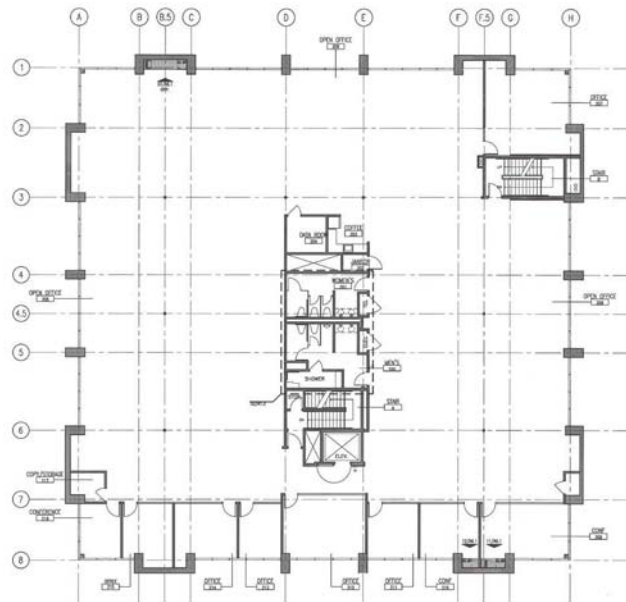


# FLOORPLANS

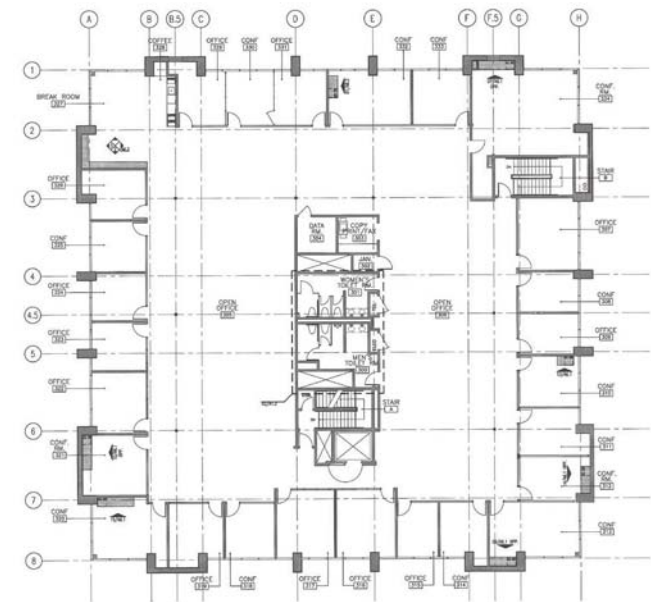
## FIRST FLOOR



## SECOND FLOOR



## THIRD FLOOR



**3101 PARK BOULEVARD**

**BRAD LYMAN** 650.688.8555 blyman@ngkf.com CA RE License #00712292  
245 Lytton Avenue, Suite 150, Palo Alto, California 94301