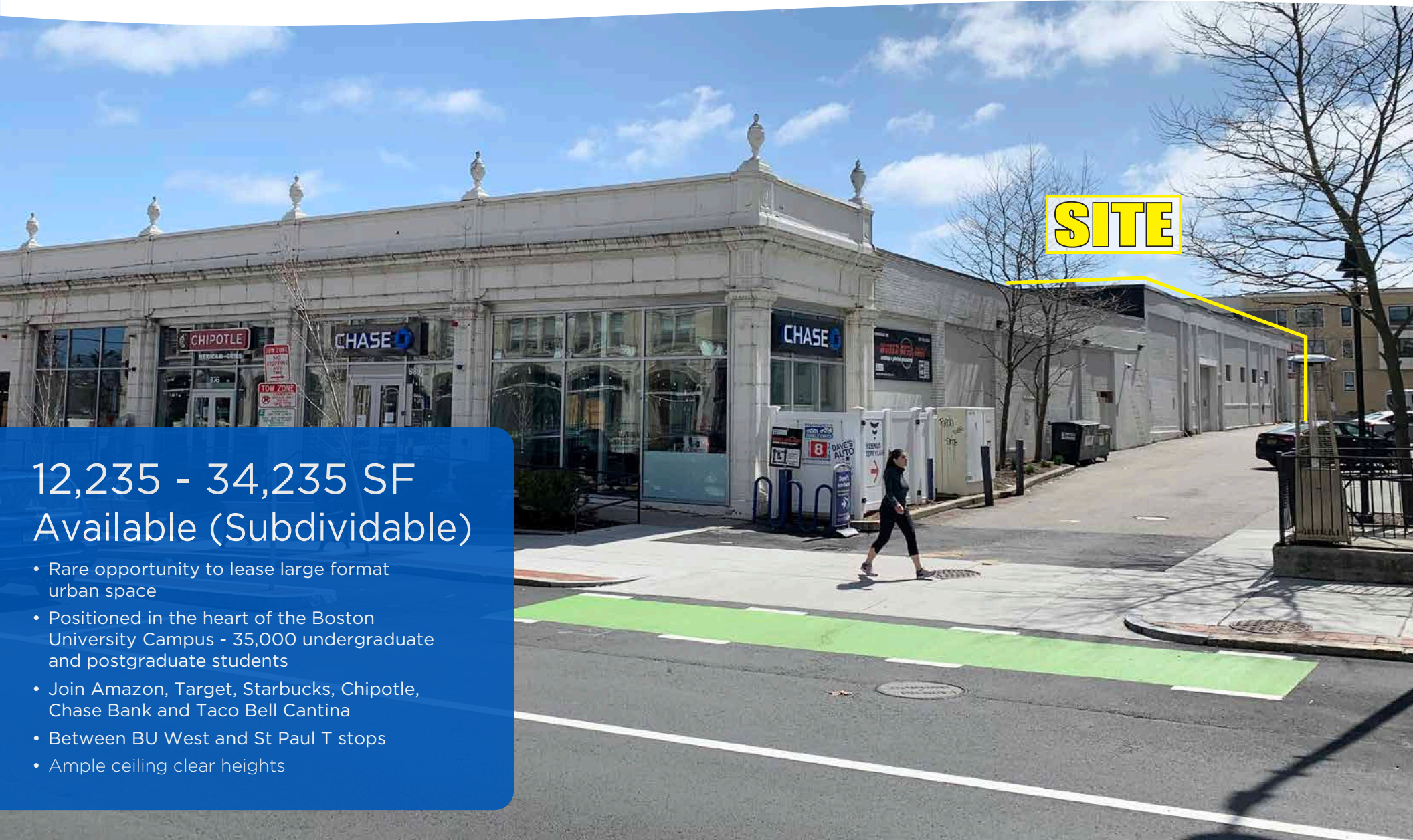


BROOKLINE, MA

# 880 Commonwealth Ave



## 12,235 - 34,235 SF Available (Subdividable)

- Rare opportunity to lease large format urban space
- Positioned in the heart of the Boston University Campus - 35,000 undergraduate and postgraduate students
- Join Amazon, Target, Starbucks, Chipotle, Chase Bank and Taco Bell Cantina
- Between BU West and St Paul T stops
- Ample ceiling clear heights

Ben Ravelson  
617.239.3646  
broker@atlanticretail.com

Ben Starr  
617.239.3643  
bstarr@atlanticretail.com

ATLANTA | BOSTON | CHARLOTTE | LOS ANGELES | PITTSBURGH | WEST PALM BEACH

ATLANTICRETAIL.COM

© ATLANTIC RETAIL 2020 The information above has been obtained from sources believed reliable. While we do not doubt its accuracy, we have not verified it and make no guarantee, warranty or representation about it.



WEST CAMPUS HALLS  
1,852 STUDENT CAPACITY

33 HARRY AGGANIS WAY  
960 STUDENT CAPACITY

10 BUICK ST  
817 STUDENT CAPACITY

BU FITNESS & RECREATION CENTER

COLLEGE OF GENERAL STUDIES

**Boston University West**

COLLEGE OF FINE ARTS

STUDENT UNION

SCHOOL OF LAW

COLLEGE OF ARTS AND SCIENCES

SCHOOL OF EDUCATION

QUESTROM SCHOOL OF BUSINESS

575 COMM AVE  
456 STUDENT CAPACITY

**Boston University East**

COLLEGE OF COMMUNICATION

WARREN TOWERS  
1,797 STUDENT CAPACITY

TAQUERIA EL BARRIO

T-ANTHONY'S PIZZA  
DUNKIN' DONUTS

Firestone

SULLIVAN TIRE AND AUTO SERVICE  
SCHOOL OF HOSPITALITY

CVS pharmacy

OTTO

**SITE**  
Starbucks  
Chipotle  
Chase

PROPOSED TACO BELL  
amazon  
TARGET

PAVEMENT COFFEE HOUSE

CVS pharmacy

WHOLE FOODS MARKET

Tatte

REGAL CINEMAS  
TimeOut MARKET

TARGET

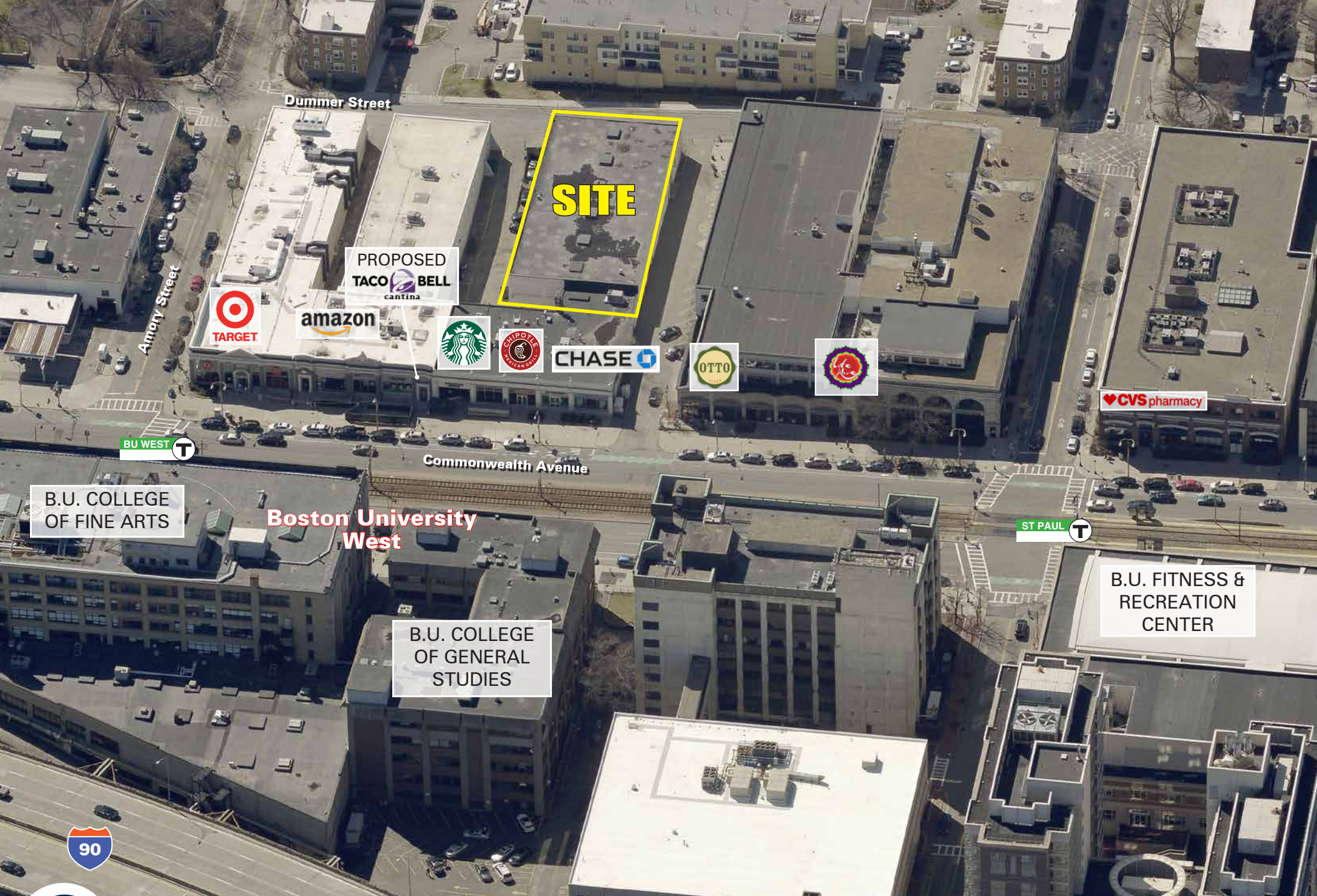
CAVA

2018 DEMOGRAPHICS	0.5 MILE	1 MILE	1.5 MILE	2 MILE
Population	14,518	72,035	177,349	279,691
Med HH Income	\$72,453	\$66,631	\$61,842	\$65,752

 **BROOKLINE, MA**  
**880 Commonwealth Ave**

**Ben Ravelson**  
617.239.3646  
bravelson@atlanticretail.com

**Ben Starr**  
617.239.3643  
bstarr@atlanticretail.com



Dummer Street

Amory Street

Commonwealth Avenue

**SITE**

PROPOSED  
**TACO BELL**  
cantina



amazon



CHASE



CVS pharmacy

BU WEST

B.U. COLLEGE OF FINE ARTS

**Boston University West**

ST PAUL

B.U. FITNESS & RECREATION CENTER

B.U. COLLEGE OF GENERAL STUDIES



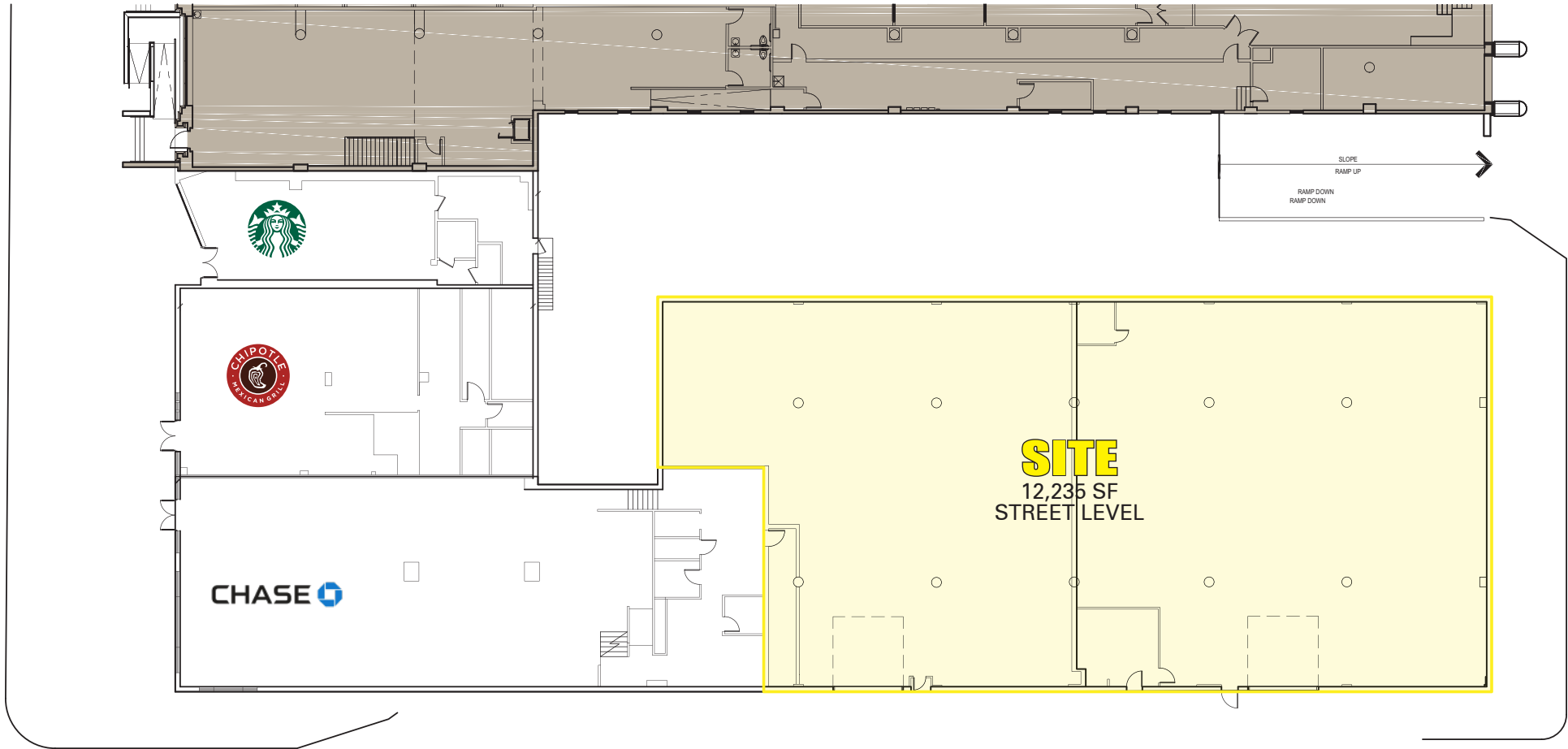
BROOKLINE, MA  
**880 Commonwealth Ave**

**Ben Ravelson**  
617.239.3646  
bravelson@atlanticretail.com

**Ben Starr**  
617.239.3643  
bstarr@atlanticretail.com

ATLANTICRETAIL.COM

COMMONWEALTH AVE - HWY 20



BROOKLINE, MA

880 Commonwealth Ave

FLOOR PLAN - STREET LEVEL

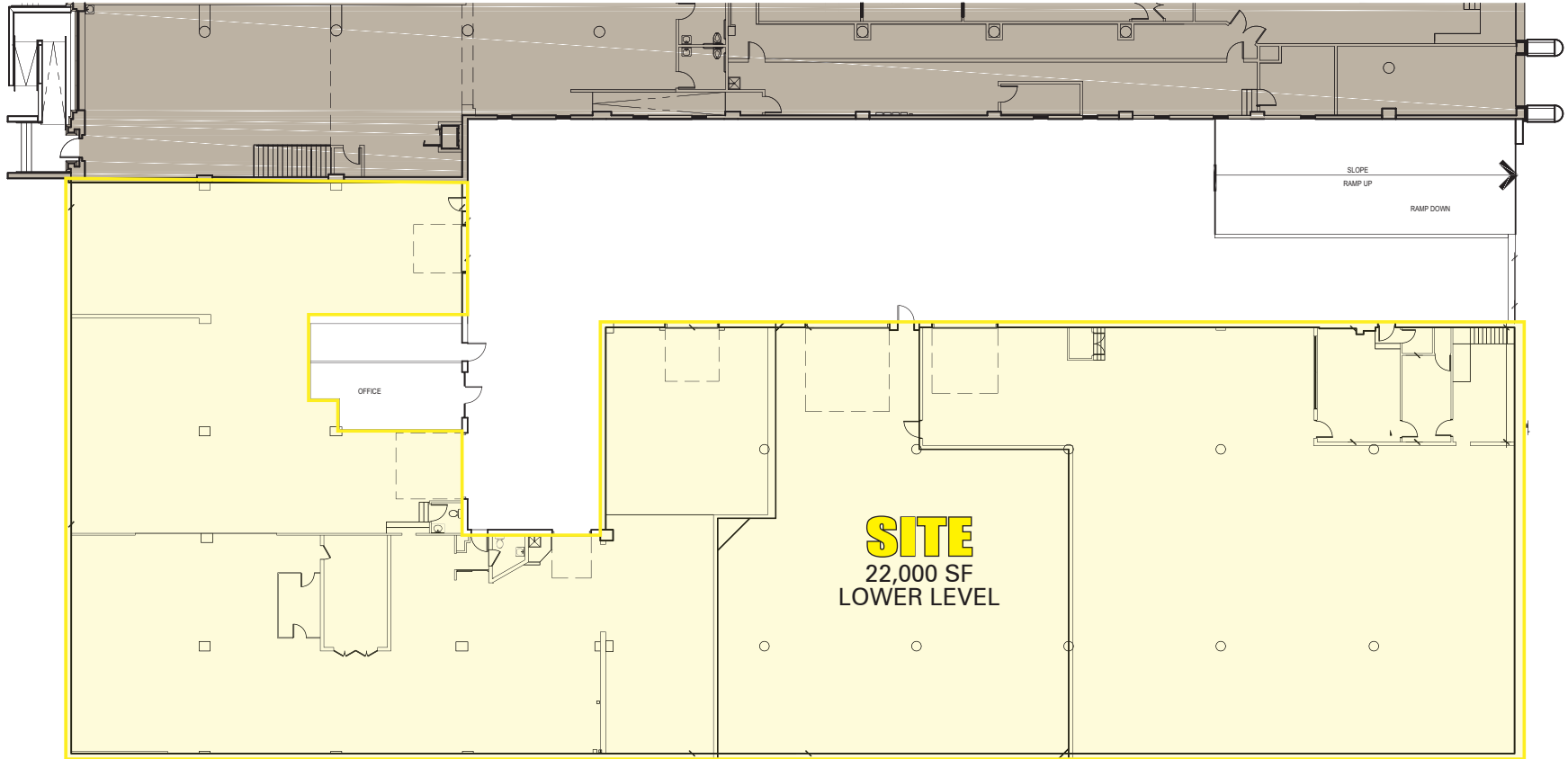
Ben Ravelson

617.239.3646  
bravelson@atlanticretail.com

Ben Starr

617.239.3643  
bstarr@atlanticretail.com

ATLANTICRETAIL.COM



BROOKLINE, MA  
880 Commonwealth Ave

FLOOR PLAN - LOWER LEVEL

Ben Ravelson

617.239.3646  
bravelson@atlanticretail.com

Ben Starr

617.239.3643  
bstarr@atlanticretail.com

ATLANTICRETAIL.COM