

# BEAR LAKE



3010 East Semoran Blvd.  
Apopka, FL 32703



**5 Spaces Available**  
**3,200 SF • 1,300 SF • 1,300 SF • 1,300 SF • 2,600 SF**

**Orlando, FL**



## Demographics (2018 Estimates)

	Population	Households	Average HH Income	Daytime Population
<b>1 Mile</b>	12,616	4,826	\$81,336	3,785
<b>3 Miles</b>	82,881	30,971	\$82,187	24,656
<b>5 Miles</b>	201,420	76,614	\$74,811	82,177

## Highlights

- EASY ACCESS to Interstate 4 and the Altamonte Mall area.
- High traffic area with HIGH VISIBILITY and good parking.
- WELL-LOCATED on highway 436 (Semoran Boulevard) at two signalized intersections.
- CONVENIENT to nearby neighborhoods.
- Located directly across from NEWLY OPENED Walmart Neighborhood Market.

## KEY TENANTS

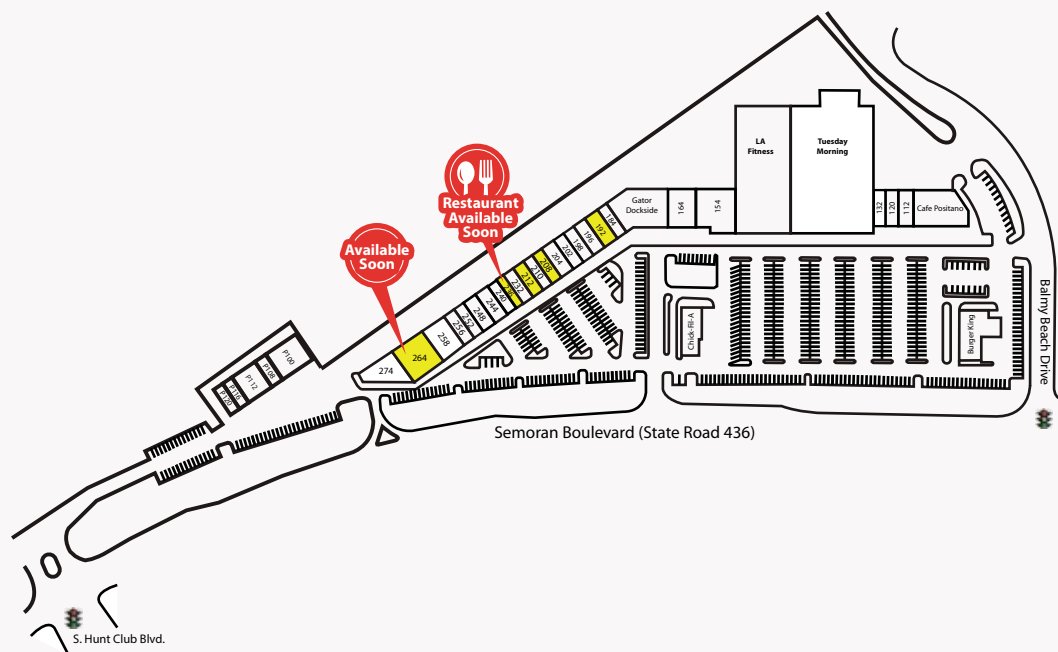
**LA FITNESS**

**Tuesday Morning**

## Traffic Counts

51,500 VPD - on East Semoran Blvd directly in front of the site.

7,145 VPD - on Balmy Beach Dr. directly in front of the site.

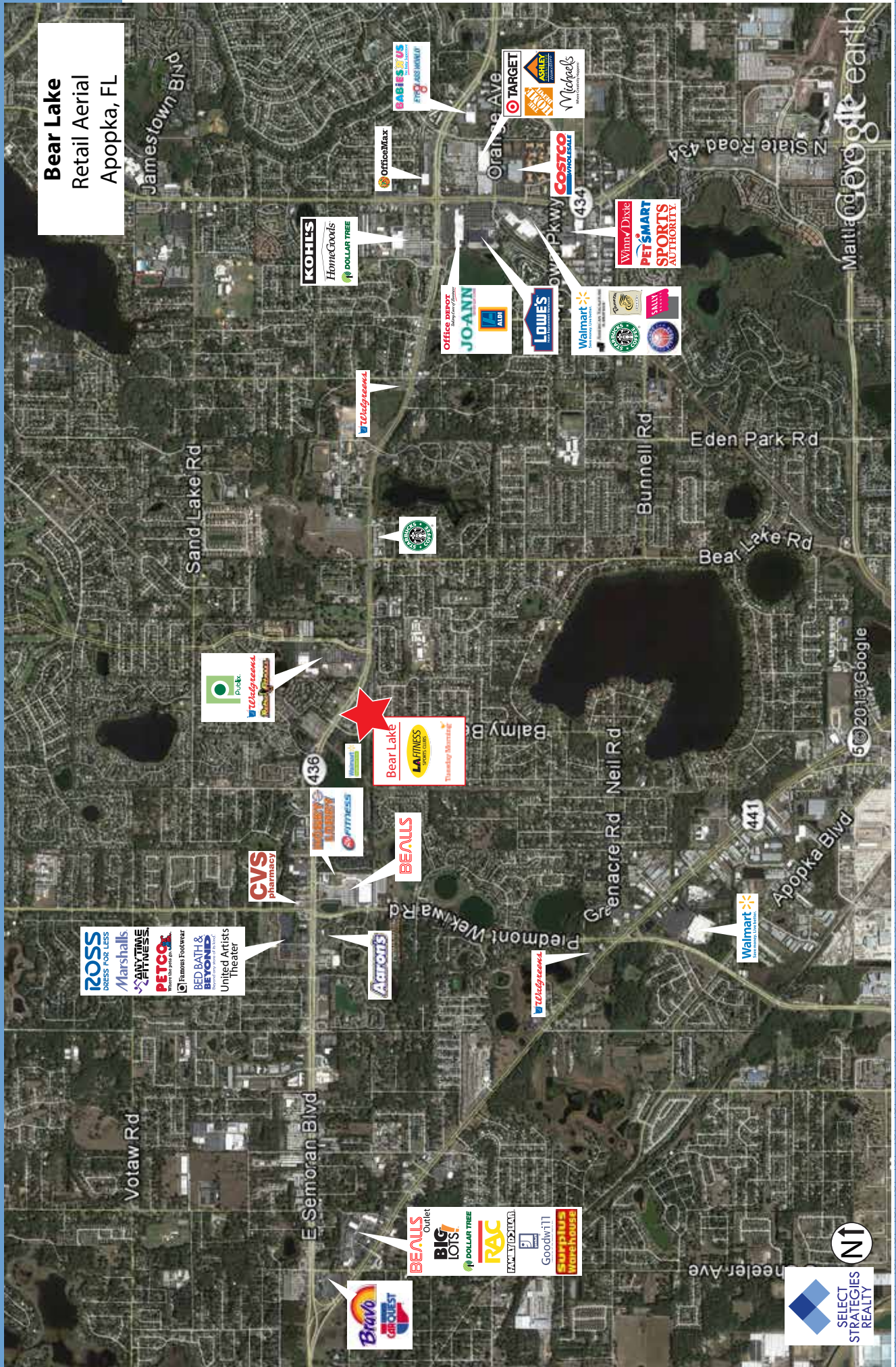


**BRIAN JONES**

5770 Hoffner Ave.  
Suite 102  
Orlando, FL 32822  
Direct: 407.516.9405  
bjones@selectstrat.com  
www.selectstrat.com



**Bear Lake**  
Retail Aerial  
Apopka, FL



N1

SELECT  
STRATEGIES  
REALTY