

LASER DRIVE INDUSTRIAL COMPLEX

1,060± SF

Industrial Space for Lease

16548 East Laser Drive | Suite 10 | Fountain Hills, AZ

Includes ±450 sf warehouse
and mezzanine space for
storage or office build-out!



NEWLY PAINTED • FRESHLY PAVED PARKING LOT • NEW ROOF • PROFESSIONALLY MANAGED

For more information or to schedule a showing, please contact:



John Quatrini
Associate Broker
C 602.859.0506
O 480.443.3992
john@shellcommercial.com

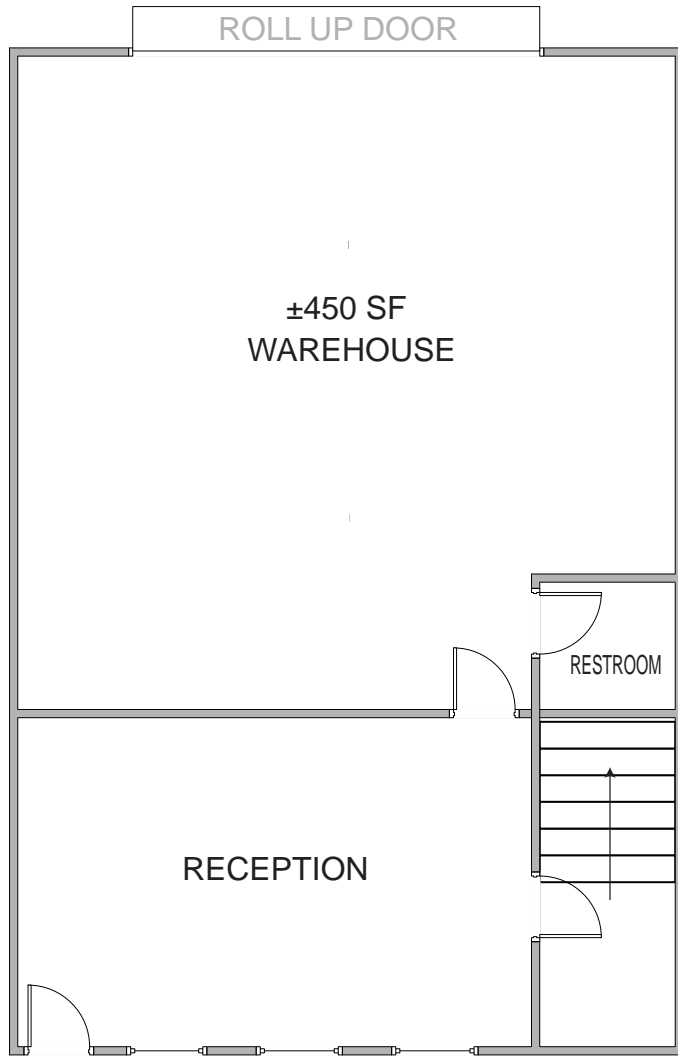


Suzanne Enright
Senior Associate
C 602.471.2981
O 480.443.3992
suzanne@shellcommercial.com



- Stable and flexible property owner in Phoenix/Tucson metro, since 1992, with office and industrial properties totaling over 10.3 million square feet.
- Local Ownership with in-house property management professionals to service our customers.
- Move-in ready suites available for immediate delivery.
- Efficient lease negotiation process.

16548 E Laser Drive
Fountain Hills, AZ 85268
Suite 10 ±1,060 sf



← FIRST FLOOR

Mezzanine space perfect for storage
or office build-out

SECOND FLOOR →



NOT TO SCALE

All information furnished regarding property for sale, rental or financing is from sources deemed reliable, but no warranty or representation is made to the accuracy thereof and same is submitted to errors, omissions, change of price, rental or other conditions, prior to sale, lease or financing or withdrawal without notice. No liability of any kind is to be imposed on the broker herein. This information has been secured from sources deemed reliable, however, we make no warranties as to its accuracy.

AVAILABILITY

16548 East Laser Drive | Fountain Hills, AZ

16548 E Laser Drive | Suite 10 | 1,060± sf

FEATURES:

- Restroom, Warehouse
- Excellent mezzanine space for storage or flex use

