



# 501

## EASTLAKE

Seattle, Washington

**NEWMARK**

LINCOLN  
PROPERTY  
COMPANY

**CAVAN O'KEEFE**  
206.395.2903  
cavan.okeefe@nmrk.com

**DANIEL SEGER**  
206.487.5163  
daniel.seger@nmrk.com



## BUILDING HIGHLIGHTS

Newly constructed (2002) building located in the Vibrant South Lake Union neighborhood with excellent views, efficient floorplates and desirable underground parking

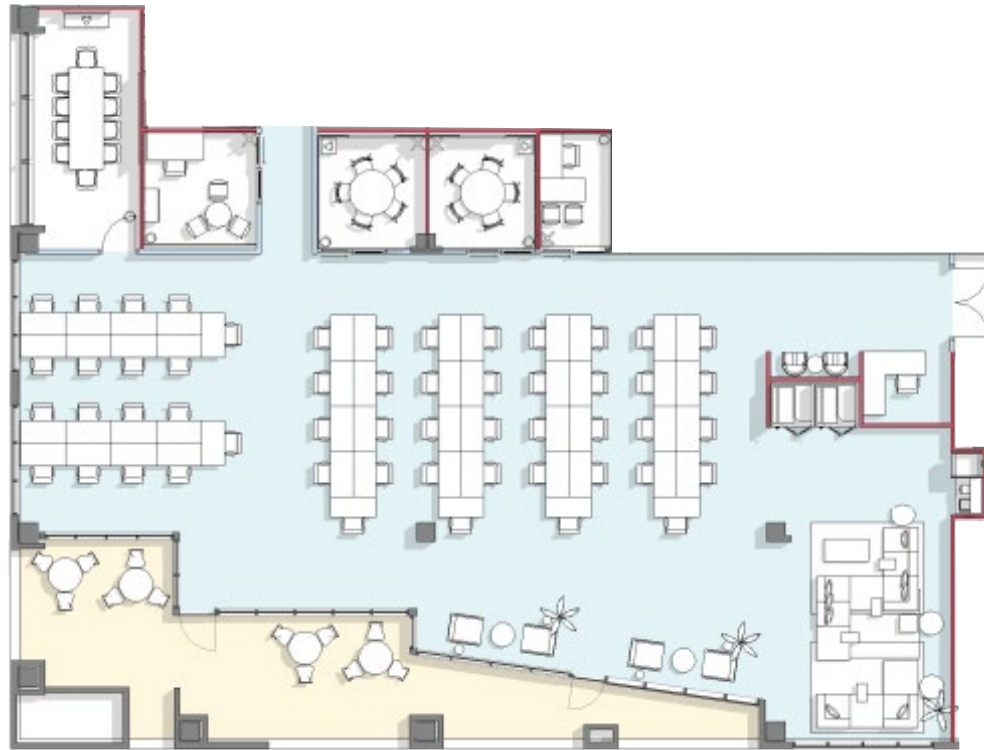
- Live, Work, Play environment with abundant walkable amenities
- Convenient access to I-5, SR 520, I-90 and Hwy 99
- 9' finished ceiling height, 12' slab to slab
- Exterior building signage opportunity with freeway visibility
- Automated entry (parking and building) and elevator access card system
- Owned and managed by a partnership of Lincoln Property Company



## BUILDING FACTS

<b>Building Address</b>	501 Eastlake Ave E, Seattle, WA
<b>Building Size</b>	103,494 RSF
<b>Floors</b>	5
<b>Power</b>	3,000 amps of 480V, 3 phase power serving major building systems
<b>Number of elevators</b>	3
<b>Parking ratio</b>	1.7 per 1,000 RSF





Private Entry off Eastlake Ave

Entrance to  
Building Lobby



## FLOORPLAN

## AVAILABILITY

FLOOR 1 | SUITE 101

5,065 SF

Available Now





# 501

## EASTLAKE

Seattle, Washington



**NEWMARK**

LINCOLN  
PROPERTY  
COMPANY

**CAVAN O'KEEFE**  
206.395.2903  
cavan.okeefe@nrmk.com

**DANIEL SEGER**  
206.487.5163  
daniel.seger@nrmk.com

The distributor of this communication is performing acts for which a real estate license is required. The information contained herein has been obtained from sources deemed reliable but has not been verified and no guarantee, warranty or representation, either express or implied, is made with respect to such information. Terms of sale or lease and availability are subject to change or withdrawal without notice.