

FOR LEASE
MEDICAL OFFICE

WESTSIDE PROFESSIONAL CENTER

1693 SW Chandler Avenue | Bend OR



- 2,092 +/- RSF available late December 2018
- Great opportunity for medical office use with 5 offices, 1 breakroom, 1 bathroom and 1 x-ray area with lead lined shielding.
- Neighborhood businesses include Cascade Lakes Lodge, The Bend Bulletin, The Leffel Center and Marriott Towne Place Suites.
- Near OSU Cascades
- Move in ready clinical medical

Lease Rate: \$1.95/SF/Mo NNN

- Suite 250: 2,092 +/- RSF
- Est. CAMs \$0.49/SF/Mo
- Parking: 83 Stalls
- Year Built: 2004

Brian Fratzke, CCIM, Principal

brian@fratcommercial.com | O 541.306.4948 C 541.480.2526

Tom Tapia, CCIM, Principal

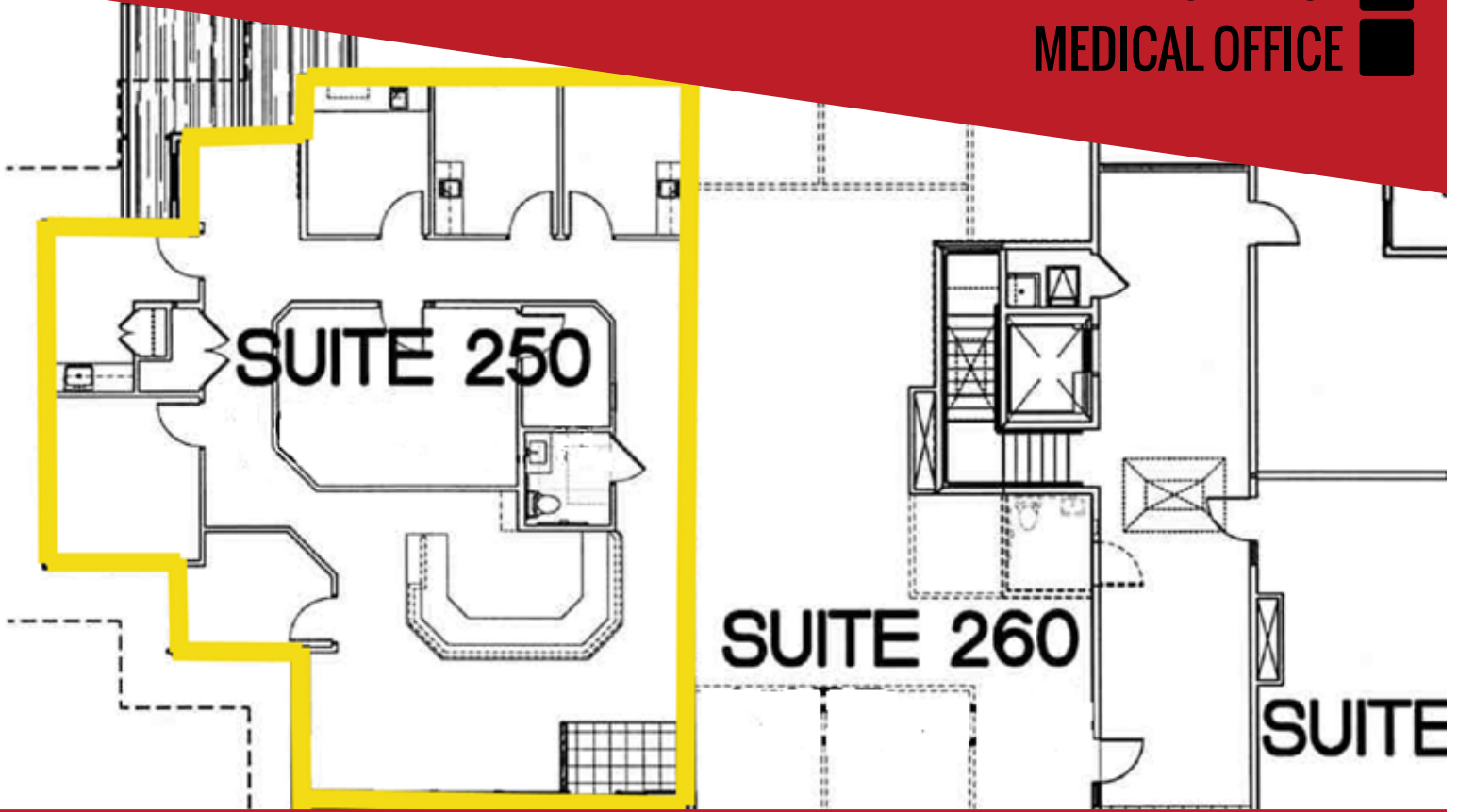
tom@fratcommercial.com | O 541.306.4948 C 541.390.2900



963 SW Simpson Ave., Suite 220 | Bend, OR 97702

541.306.4948 | www.fratzkecommercial.com

FOR LEASE
MEDICAL OFFICE



**BRIAN
FRATZKE**
CCIM, PRINCIPAL
541.480.2526 [C]
BRIAN@FRATCOMMERCIAL.COM



**TOM
TAPIA**
CCIM, PRINCIPAL
541.390.2900 [C]
TOM@FRATCOMMERCIAL.COM



With You Every Square Foot of the Way.

DISCLAIMER: This information is from sources we deem reliable, but for which we assume no liability. This is an exclusive listing. The information contained herein is given in confidence with the understanding that all negotiations pertaining to this property be handled through Fratzke Commercial Real Estate. All measurements are approximate.