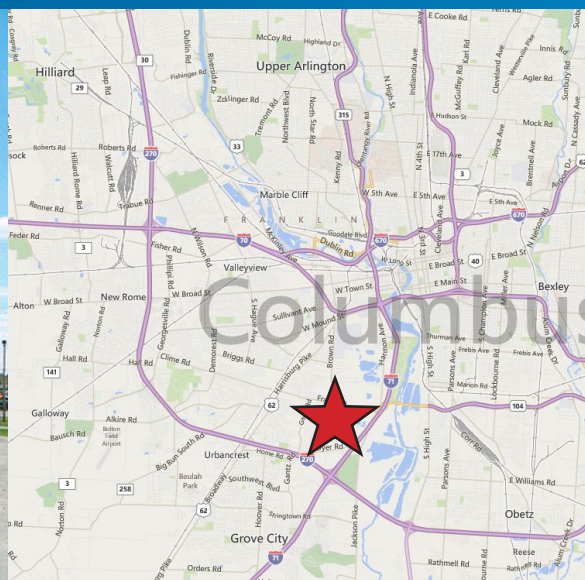


FOR LEASE > INDUSTRIAL SPACE

2136 Hardy Pkwy.

GROVE CITY, OH 43123



Contact Us

JOEL R. YAKOVAC, SIOR

614.410.5654

COLUMBUS, OH

joel.yakovac@colliers.com

MICHAEL R. LINDER, SIOR

614.410.5628

COLUMBUS, OH

michael.linder@colliers.com

SHANE E. WOLOSHAN, SIOR

614.410.5624

COLUMBUS, OH

shane.woloshan@colliers.com

2136 Hardy Pkwy. > Industrial Space

Standalone office/warehouse building with fenced and paved outdoor storage. 8,330 +/- SF total with approximately 2,080 SF of efficient office. The warehouse is served by 1 dock door, 2 drive-in doors, 20' clear height and 3 phase/4 wire electrical service. Available monument signage/pylon sign existing, ready for Tenant's company name. Owner prefers to lease, but will review any reasonable purchase offers.

Building Type:	8,330 SF office/warehouse building
Lease Rate:	\$6.25/SF MG
Year Built:	1974
Real Estate Taxes:	\$6,061.00 (2013)

The information contained herein was obtained from sources believed reliable; however, Colliers International makes no guarantees, warranties, or representations as to the completeness or accuracy thereof. The presentation of this property is submitted subject to errors, omissions, change of price or conditions prior to sale or lease, or withdrawal without notice.

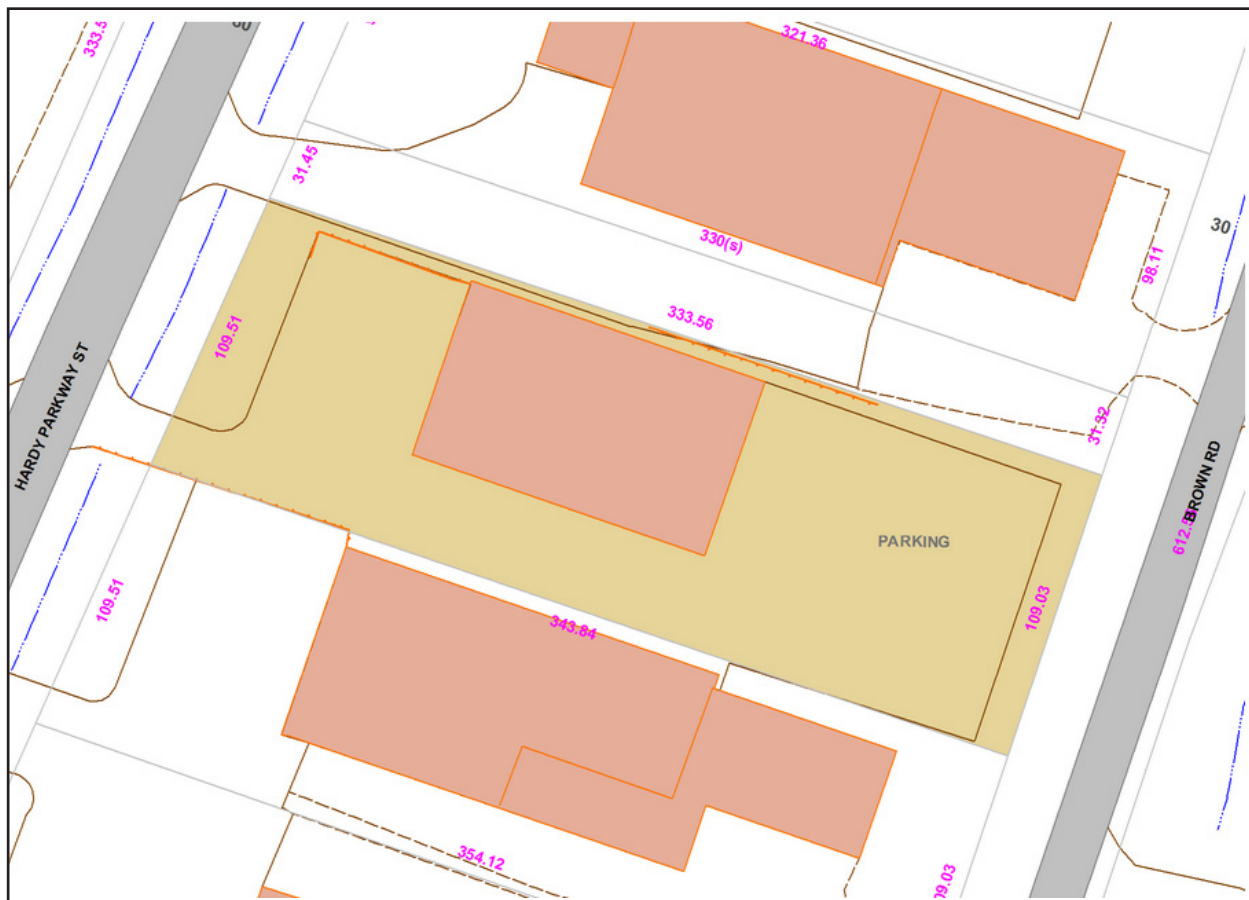
COLLIERS INTERNATIONAL
GREATER COLUMBUS REGION

Two Miranova Place, Suite 900
Columbus, OH 43215

www.colliers.com

Building Amenities

- › 2,082 +/- SF of office
- › 1 dock, 2 drive-in doors
- › Block/brick veneer construction
- › 20' clear height
- › Mezzanine storage (approx. 2,000 SF) not included in total square footage
- › Fenced and paved outdoor storage area
- › Striped parking for 25 cars (more can easily be added)
- › 3 phase, 4 wire electric service
- › Gas forced air heat



JOEL R. YAKOVAC, SIOR
614.410.5654
COLUMBUS, OH
joel.yakovac@colliers.com

SHANE E. WOLOSHAN, SIOR
614.410.5624
COLUMBUS, OH
shane.woloshan@colliers.com

MICHAEL R. LINDER, SIOR
614.410.5628
COLUMBUS, OH
michael.linder@colliers.com

