

1645 SAINT JOHNS PLACE

CROWN HEIGHTS, BROOKLYN



RETAIL SPACE
FOR LEASE

CROWN HEIGHTS BROOKLYN

1645 SAINT JOHNS PL

SPACE HIGHLIGHTS

LOCATION

Between Ralph Avenue
and Buffalo Avenue

SPACE

545 SF

CEILING HEIGHT

10 FT

FRONTAGE

14 FT

DIMENSIONS

13.5 FT x 38.4 FT

ZONING

R6

OCCUPANCY

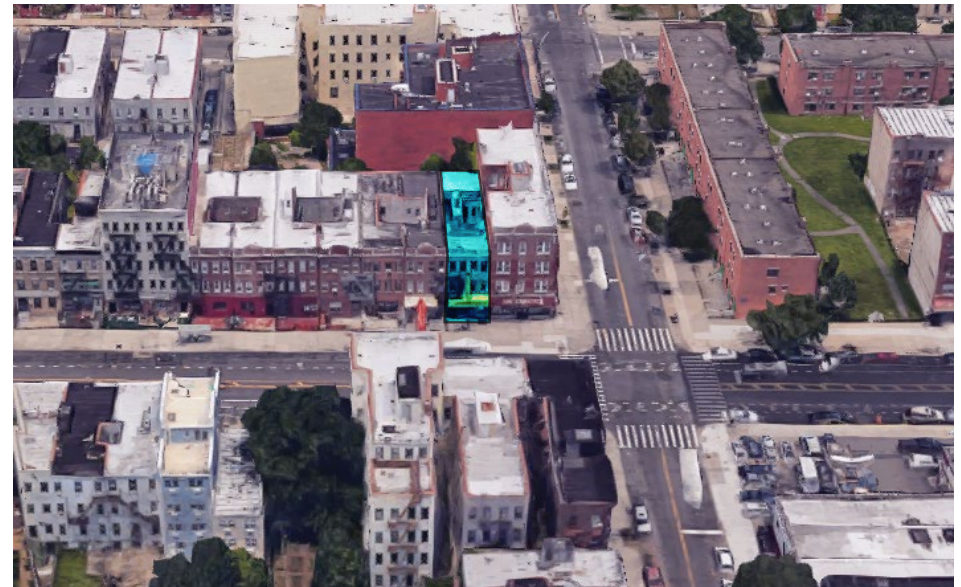
Occupied

ASKING RENT

Upon Request

HIGHLIGHTS

- 10 FT ceilings
- Great for F&B use
- Gas & venting available
- Additional basement space



CROWN HEIGHTS BROOKLYN

1645 SAINT JOHNS PL

EXISTING CONDITION



CROWN HEIGHTS BROOKLYN

1645 SAINT JOHNS PL

EXISTING CONDITION



NEIGHBORHOOD DEMOGRAPHICS



190,463

POPULATION
WITHIN 1-MILE
RADIUS



35.4 Years

AVERAGE
POPULATION
AGE



8.67%

POPULATION
GROWTH
SINCE 2010



\$50,681

AVERAGE HHI
WITHIN 1-MILE
RADIUS



3,437

TOTAL BUSINESSES
WITHIN 1-MILE
RADIUS



\$1.1 bn

ANNUAL SPENDING
WITHIN 1-MILE
RADIUS

CROWN HEIGHTS BROOKLYN

1645 SAINT JOHNS PL

NEIGHBORHOOD & TRANSPORTATION

NEIGHBORHOOD TENANTS

- Gerizim Cafe
- Zhangs Garden
- Food Bazaar Supermarket
- Sun Hing
- Fresh Supermarket
- Mash Gourmet Deli
- La Quinta Inn & Suites
- Empire Kitchen
- Prestige Lighting
- Golden Gourmet Deli
- Crown Chicken & Pizza
- TuNurka Beauty Palace
- Blink Fitness Crown Heights
- Planet Fitness
- GameStop
- Chase Bank
- Walgreens
- No 1
- Shoppers World
- Living Well Garden Juice Bar
- Ooh La La Lounge and Bar
- Great Flavor

TRANSPORTATION

- 9 Min Walk at Sutter Ave-Rutland Rd (0.4 mi)
- 12 Min Walk at Ralph Avenue (0.6 mi)
- 14 Min Walk at Utica Avenue (0.7 mi)
- 17 Min Walk at Saratoga Avenue (0.8)



CROWN HEIGHTS BROOKLYN

1645 SAINT JOHNS PL

CONTACT



DAVID QUIGUA
347 623-7658
Dquigua@exrny.com

