

# ± 5,000 sf Outlot

16955 Chesterfield Airport Road  
Chesterfield, MO 63005



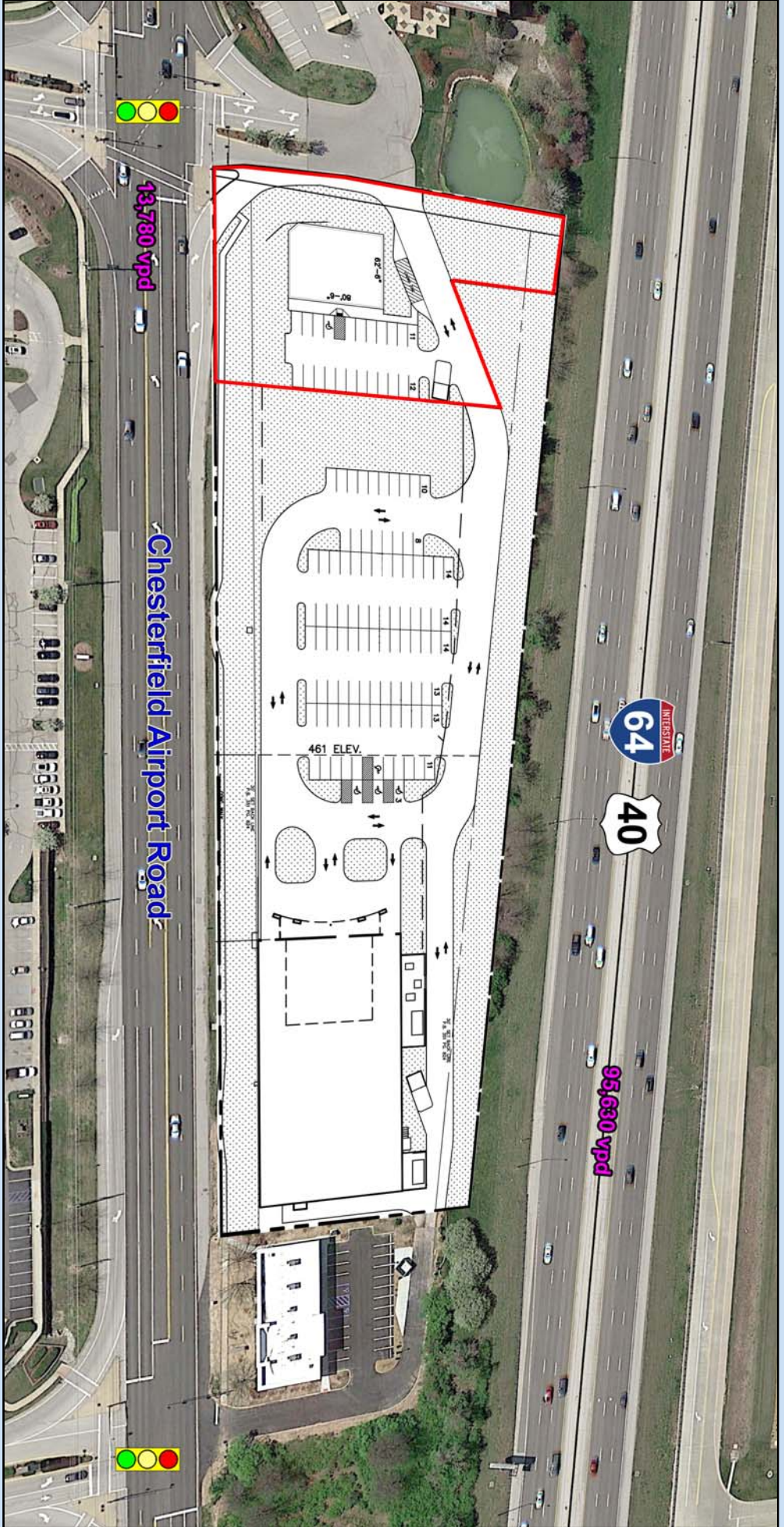
For More Information Contact:



314-991-8900

Weller Meyer (x226)  
wmeyer@caplaco.com  
314-276-5332 cell

11850 Studt Avenue  
P.O. Box 419121  
St. Louis, Missouri 63141



- Outlot with New Construction
- Proposed Building ±5,000 sf
- Great Visibility from Chesterfield Airport Road and Interstate 64/Highway 40

Demographics	1-Mile	3-Mile	5-Mile
2017 Population	239	23,143	101,068
2017 Households	833	9,327	38,761
2017 Average House-hold Income	\$172,376	\$149,179	\$137,416

The information contained herein was obtained from sources deemed reliable, however, Capitol Realty Group makes no guarantees as to the completeness or accuracy thereof. This information is subject to error, omission, change in price or conditions, prior sale or lease, or withdrawal without notice.





The information contained herein was obtained from sources deemed reliable, however, Capitol Realty Group makes no guarantees as to the completeness or accuracy thereof. This information is subject to error, omission, change in price or conditions, prior sale or lease, or withdrawal without notice.