

# 900 ISLAND PARK DRIVE

Colliers  
INTERNATIONAL

MARK A. MATTISON, II CCIM SIOR  
DIR +1 843 720 7505  
mark.mattison@colliers.com

MIKE PALMER  
DIR +1 843 518 6087  
mike.palmer@colliers.com

*CLASS 'A' OFFICE SPACE FOR LEASE IN THE HEART OF DANIEL ISLAND*



# 900

## ISLAND PARK DRIVE

Welcome to 900 Island Park Drive, a superior Class "A" office building located in the heart of Daniel Island. The building is found at the intersection of Daniel Island Park Drive and River Landing Drive in the retail hub of the town. 900 Island Park Drive has direct access to I-526.

Lease Rate: \$28.00 RSF Full Service

Parking: 5/1,000 SF

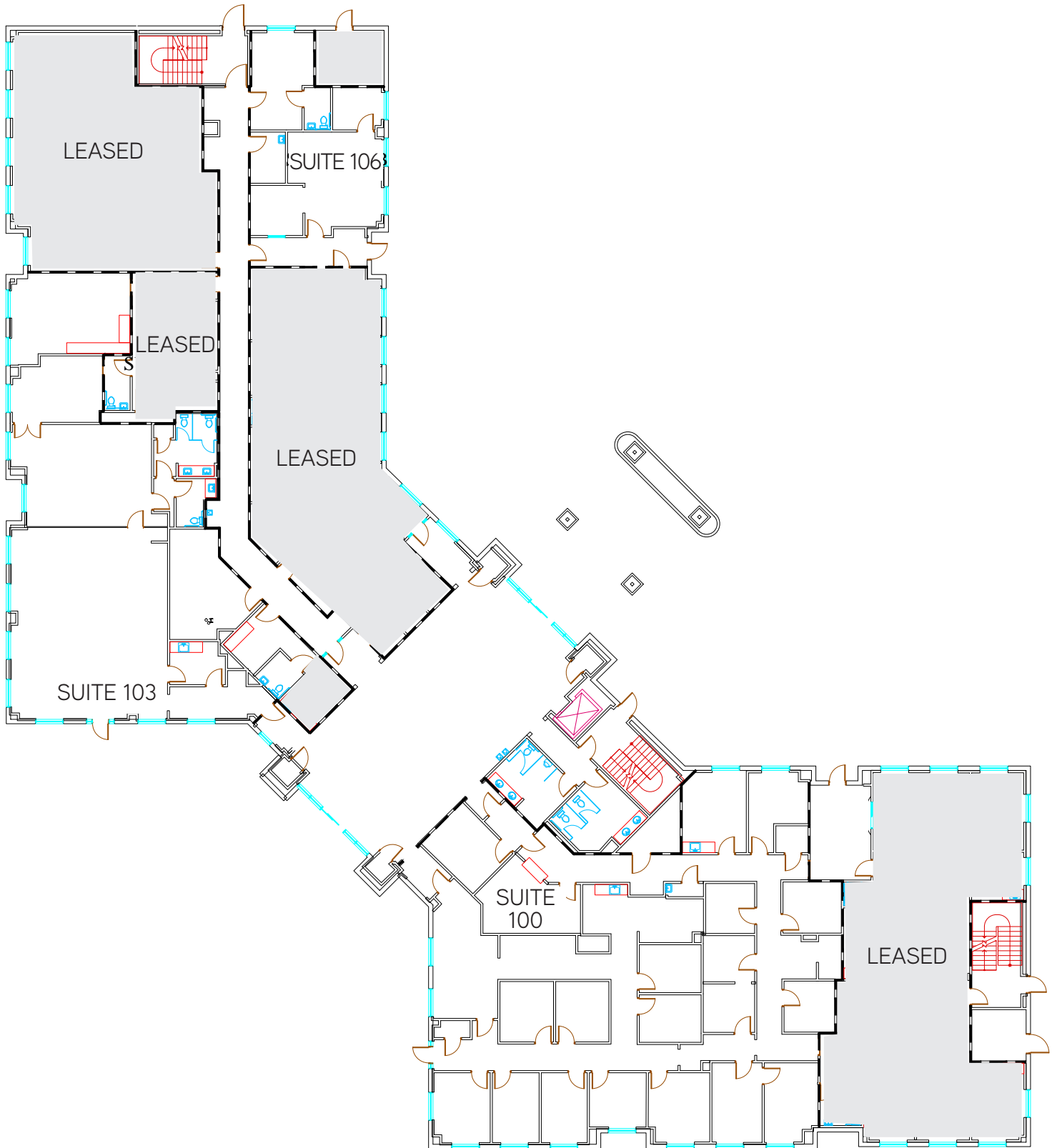
T.I. Allowance: Negotiable

Available Suites:

- Suite 100 - 5,873 RSF
- Suite 103 - 4,004 RSF
- Suite 106 - 1,202 RSF
- Suite 260 - 2,902 RSF
- Suite 270 - 1,845 RSF
- Suite 280 - 1,660 RSF
- Suite 290 - 3,710 RSF
- Suite 250 (Entire) - 10,117 RSF

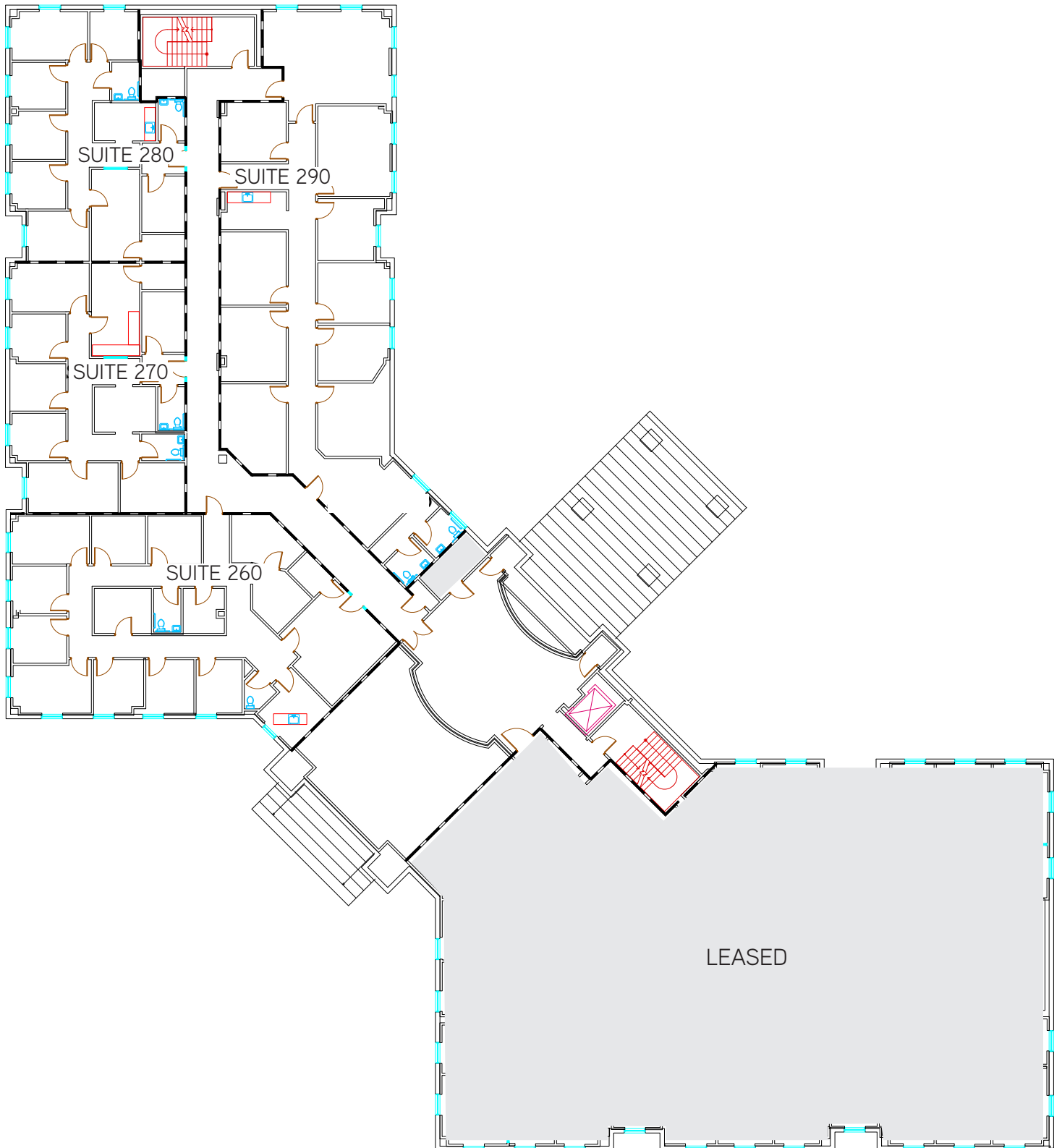
# FLOOR PLAN

## FIRST FLOOR



# FLOOR PLAN

## SECOND FLOOR





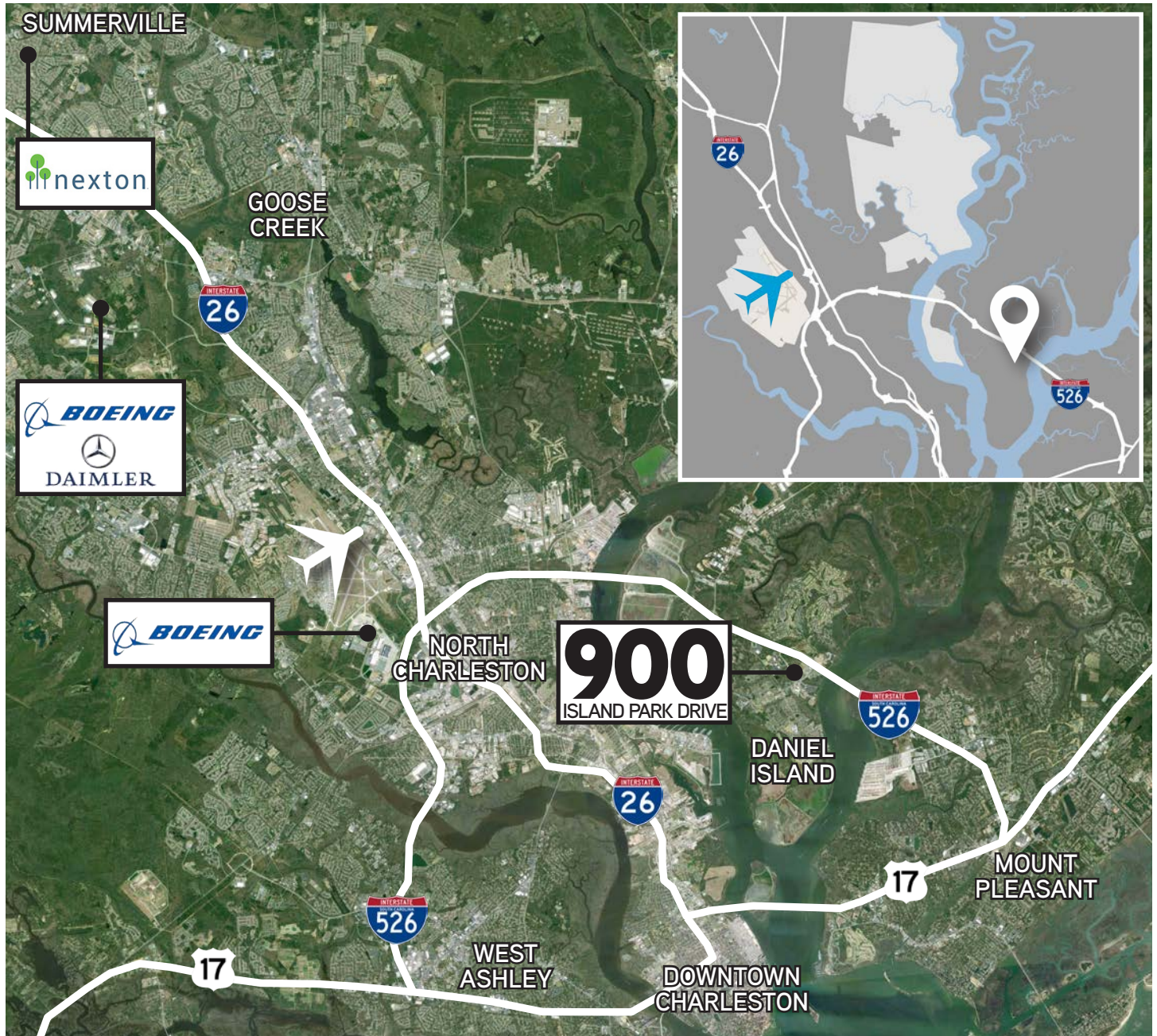
SEVEN FARMS DRIVE

ISLAND PARK DRIVE

RIVER LANDING DRIVE

**LOCATED IN THE HEART OF DANIEL ISLAND**

# LOCATION



# Colliers

INTERNATIONAL

**MARK A. MATTISON, II CCIM SIOR**

Principal

+1 843 720 7505

mark.mattison@colliers.com

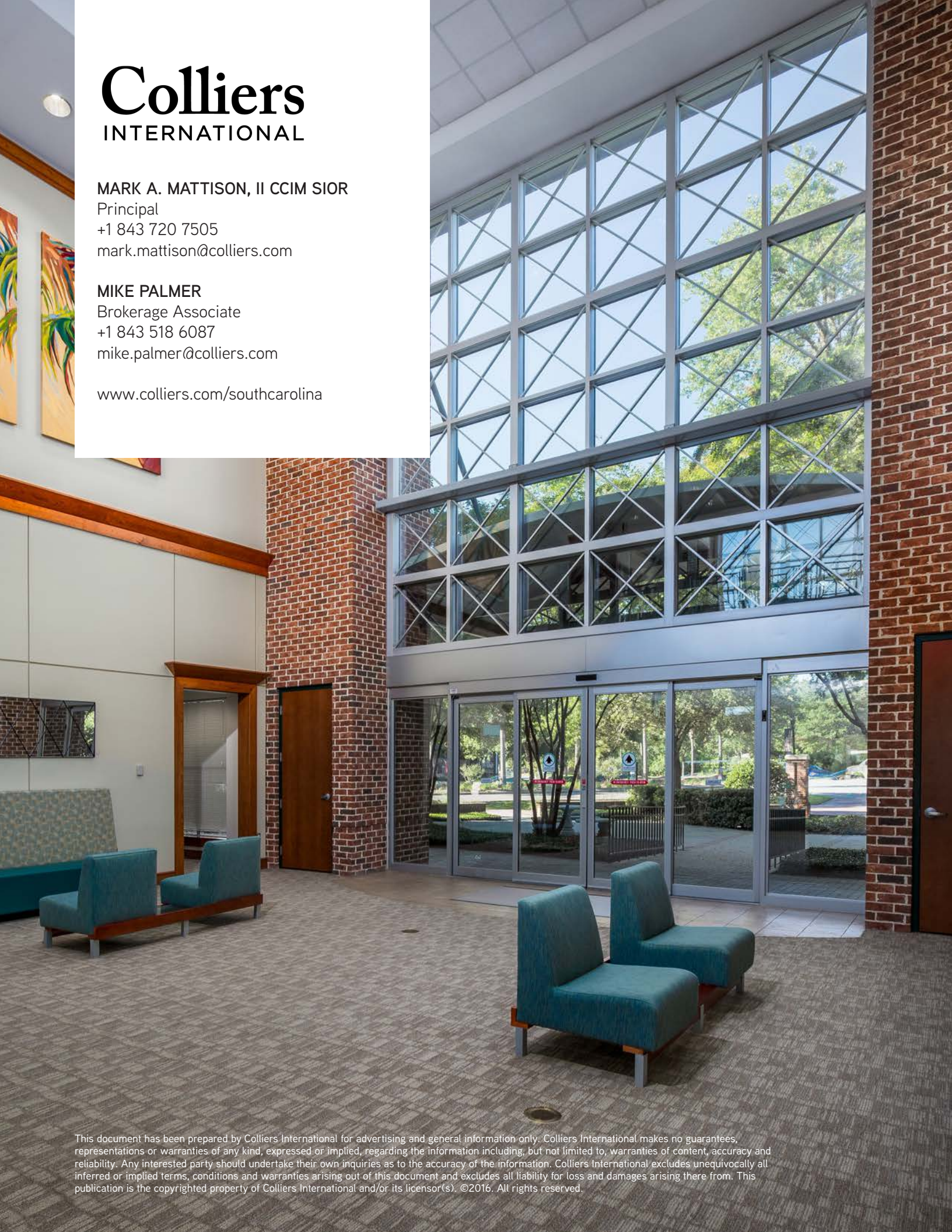
**MIKE PALMER**

Brokerage Associate

+1 843 518 6087

mike.palmer@colliers.com

[www.colliers.com/southcarolina](http://www.colliers.com/southcarolina)



This document has been prepared by Colliers International for advertising and general information only. Colliers International makes no guarantees, representations or warranties of any kind, expressed or implied, regarding the information including, but not limited to, warranties of content, accuracy and reliability. Any interested party should undertake their own inquiries as to the accuracy of the information. Colliers International excludes unequivocally all inferred or implied terms, conditions and warranties arising out of this document and excludes all liability for loss and damages arising there from. This publication is the copyrighted property of Colliers International and/or its licensor(s). ©2016. All rights reserved.