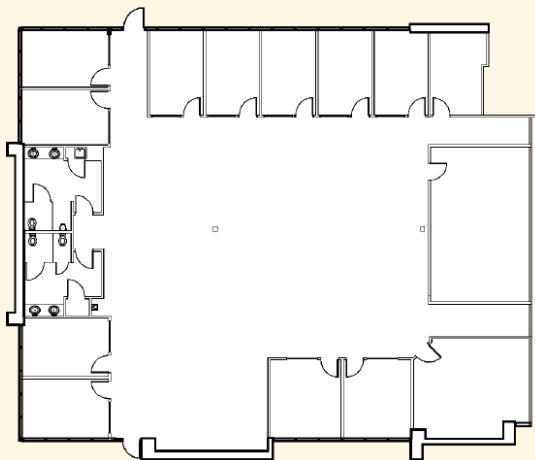
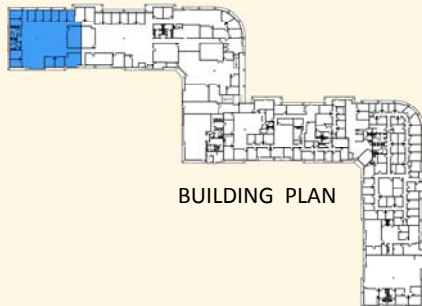


# Palm Court at Hidden River

8600 Hidden River Parkway, Tampa, Florida 33637



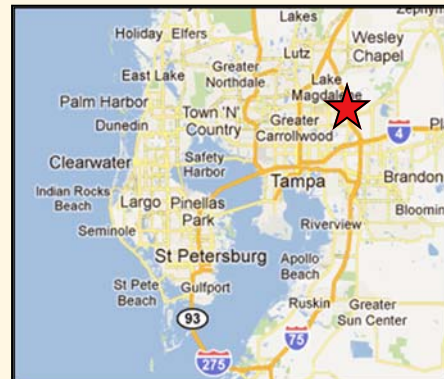
EXISTING SUITE PLAN



BUILDING PLAN

## SUITE 850

- 6,404 RSF
- Large conference room and training room
- Great office space with many perimeter offices and large open area for work stations
- Garden office suites which offer exterior signage & individual direct outdoor entry with 24/7 access
- Verizon SmartPark with FiOS & Level 3 Communications available



MAP OF TAMPA BAY



Osprey Real Estate Services

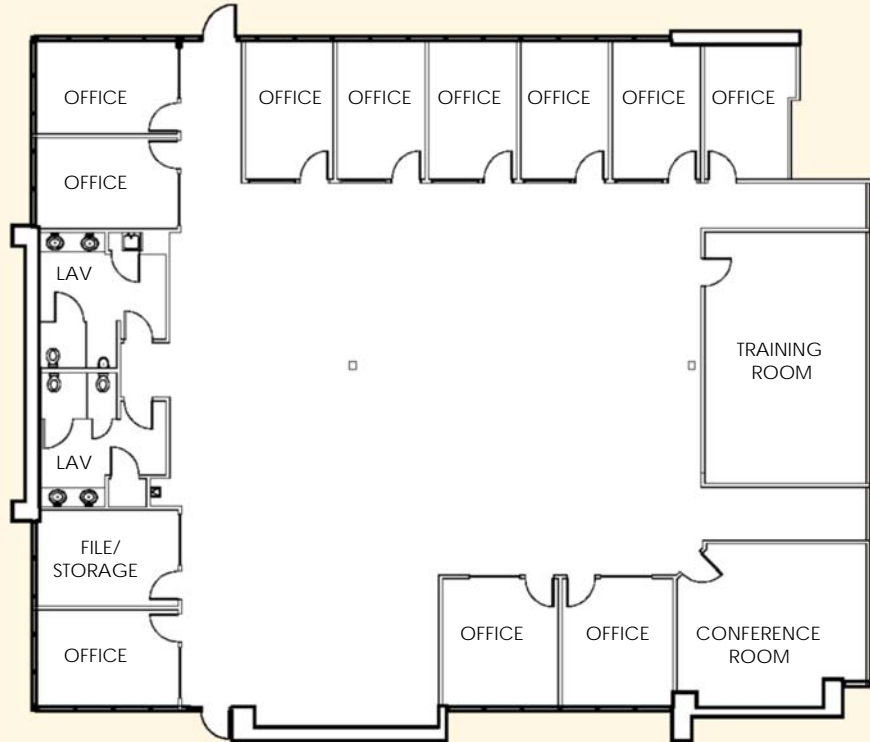
400 Carillon Parkway, St. Petersburg, FL 33716

No warranty of representation, expressed or implied, is made to the accuracy of information contained herein, and same is submitted subject to errors, change of price, rental or other conditions, withdrawal without notice, and to any special listing conditions, imposed by our principals.

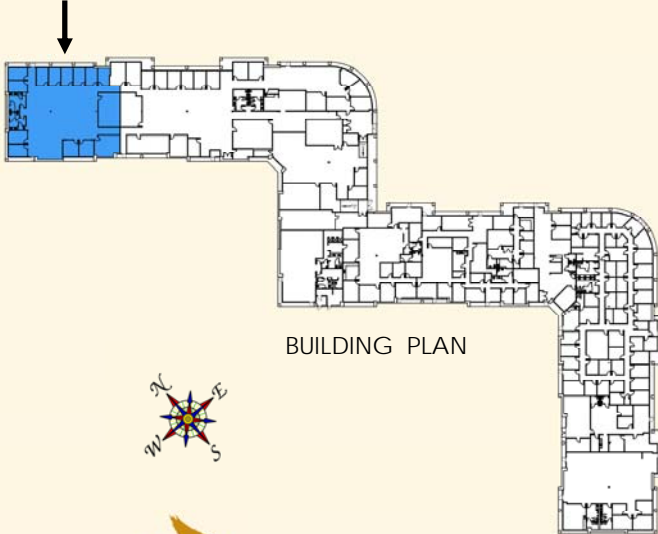
# Palm Court at Hidden River

8600 Hidden River Parkway, Tampa, Florida 33637

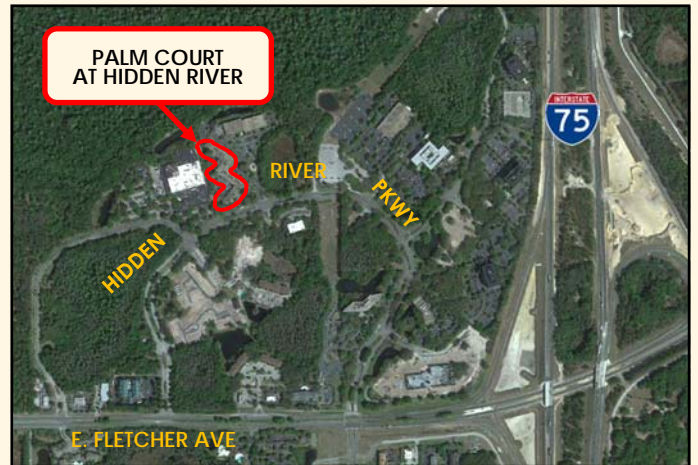
## EXISTING LAYOUT Suite 850: 6,404 RSF



SUITE 850



BUILDING PLAN



Osprey Real Estate Services  
400 Carillon Parkway, St. Petersburg, FL 33716  
[www.ospreyres.com](http://www.ospreyres.com)

Wendy Giffin  
[wgiffin@ospreyres.com](mailto:wgiffin@ospreyres.com)  
727.565.0751

No warranty of representation, expressed or implied, is made to the accuracy of information contained herein, and same is submitted subject to errors, change of price, rental or other conditions, withdrawal without notice, and to any special listing conditions, imposed by our principals.