

# 9201 RESEARCH DRIVE

PROFESSIONAL CLASS A OFFICE BUILDING FOR SALE  
IRVINE, CA 92618

 **SWG ENGINEERING**

9201

**ERIC TSE**  
949.557.5018  
[eric.tse@kidder.com](mailto:eric.tse@kidder.com)  
LIC N° 01476614

**OLIVER TERNATE**  
949.557.5019  
[oliver.ternate@kidder.com](mailto:oliver.ternate@kidder.com)  
LIC N° 01395278

 **Kidder  
Mathews**



**FOR SALE**

# 9201 Research Drive

IRVINE, CA 92618



Photo represents excellent visibility on the corner of Bake Pkwy and Research Dr.

## Property Features

**±5,233 SF** available

**CLASS A** office finishes

**CREATIVE** office space design ideal for engineering and architectural uses

**NEWLY** improved finishes

**READY** for immediate Owner user

**RARE** corner parcel location

**EXCELLENT** visibility located on the direct corner of Bake Parkway and Research Drive

**ERIC TSE**  
949.557.5018  
eric.tse@kidder.com  
LIC N° 01476614

**OLIVER TERNATE**  
949.557.5019  
oliver.ternate@kidder.com  
LIC N° 01395278

[KIDDER.COM](http://KIDDER.COM)

This information supplied herein is from sources we deem reliable. It is provided without any representation, warranty, or guarantee, expressed or implied as to its accuracy. Prospective Buyer or Tenant should conduct an independent investigation and verification of all matters deemed to be material, including, but not limited to, statements of income and expenses. Consult your attorney, accountant, or other professional advisor.

 **Kidder Mathews**

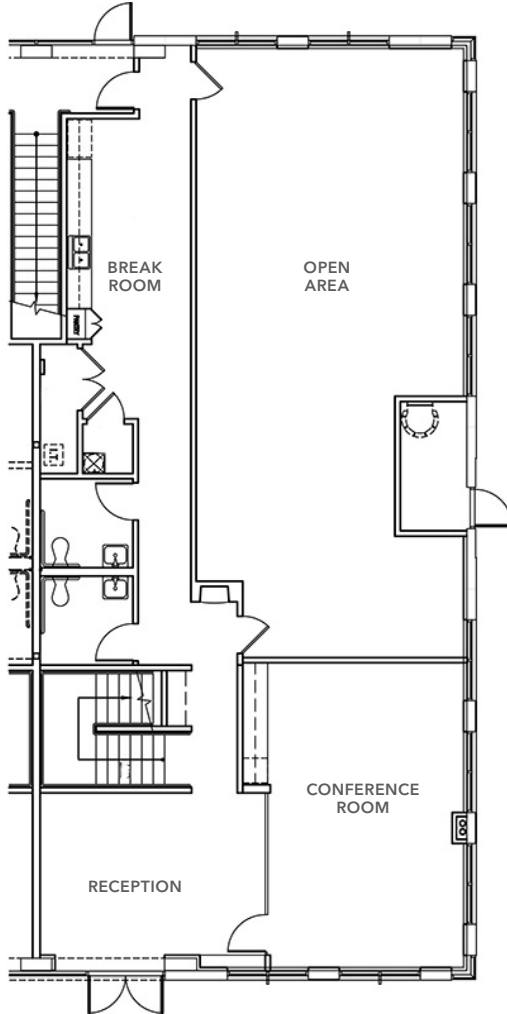
**FOR SALE**

# 9201 Research Drive

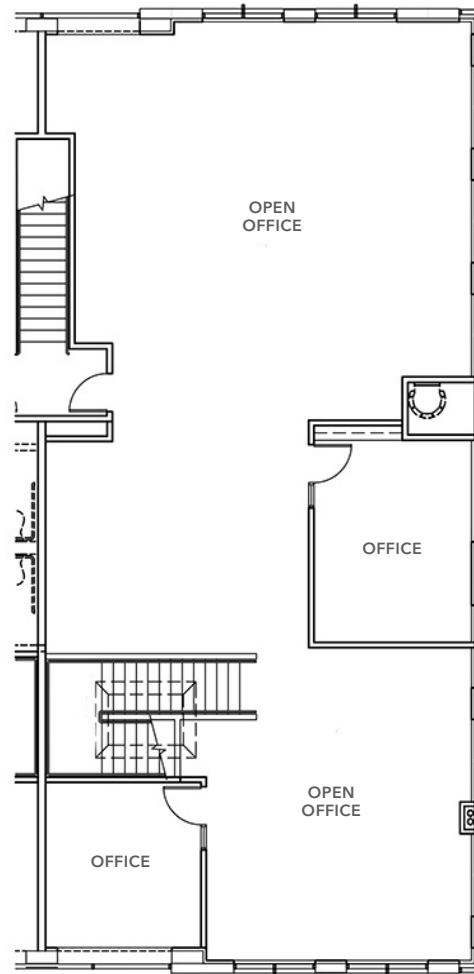
IRVINE, CA 92618

## Floor Plans

**FIRST FLOOR**



**SECOND FLOOR**



[KIDDER.COM](http://KIDDER.COM)

This information supplied herein is from sources we deem reliable. It is provided without any representation, warranty, or guarantee, expressed or implied as to its accuracy. Prospective Buyer or Tenant should conduct an independent investigation and verification of all matters deemed to be material, including, but not limited to, statements of income and expenses. Consult your attorney, accountant, or other professional advisor.

**km** Kidder Mathews



**FOR SALE**

# 9201 Research Drive

IRVINE, CA 92618



**ERIC TSE**  
949.557.5018  
[eric.tse@kidder.com](mailto:eric.tse@kidder.com)  
LIC N° 01476614

**OLIVER TERNATE**  
949.557.5019  
[oliver.ternate@kidder.com](mailto:oliver.ternate@kidder.com)  
LIC N° 01395278

[KIDDER.COM](http://KIDDER.COM)

This information supplied herein is from sources we deem reliable. It is provided without any representation, warranty, or guarantee, expressed or implied as to its accuracy. Prospective Buyer or Tenant should conduct an independent investigation and verification of all matters deemed to be material, including, but not limited to, statements of income and expenses. Consult your attorney, accountant, or other professional advisor.

 **Kidder  
Mathews**