

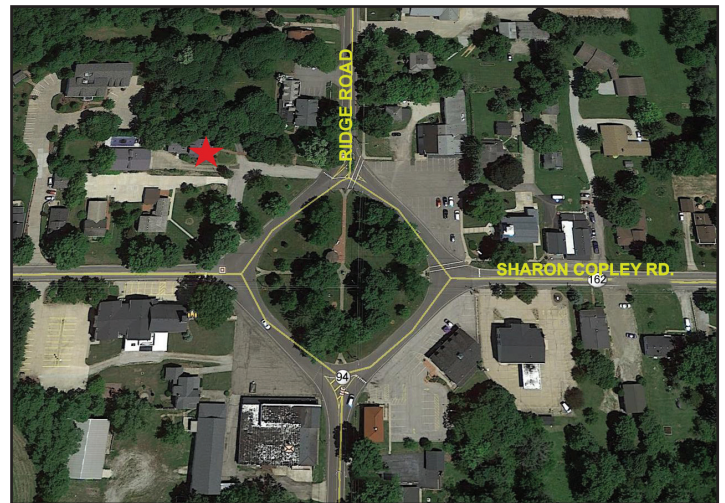


**HISTORIC PARK  
GRISWOLD HOUSE**

**Property Highlights**

**FOR LEASE: 6 SINGLE OFFICES  
STARTING AT-\$450  
ENTIRE PROPERTY-\$3,875**

- 2,584 SF beautifully and authentically restored Victorian property
- Offices range from 127 SF to 222 SF
- 6 offices, 2 conference rooms and kitchen
- Spacious, nicely appointed reception area with skylight
- Utilities included in single office spaces
- 9' Ceilings
- Wired for internet and sound
- On Historic Registry
- Located 6 miles East of I-71 and 4.4 miles West of RT 21 at I-77



**LISTING AGENTS**

MICHELLE MASICA  
Michelle@GerspacherGroup.com  
STEVE MASICA, CCIM  
Steve@GerspacherGroup.com

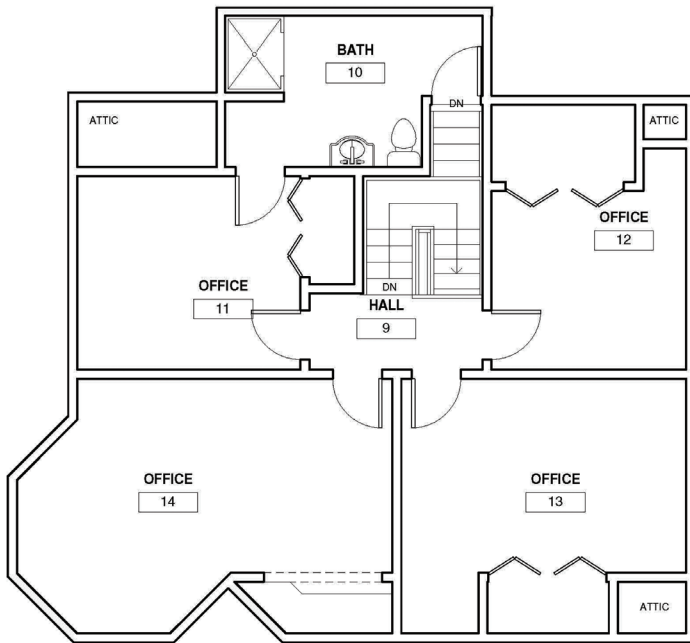
**330.722.5002**

**FOR LEASE: \$17/SF**  
**BUILDING/OFFICES: 2,584 SF**

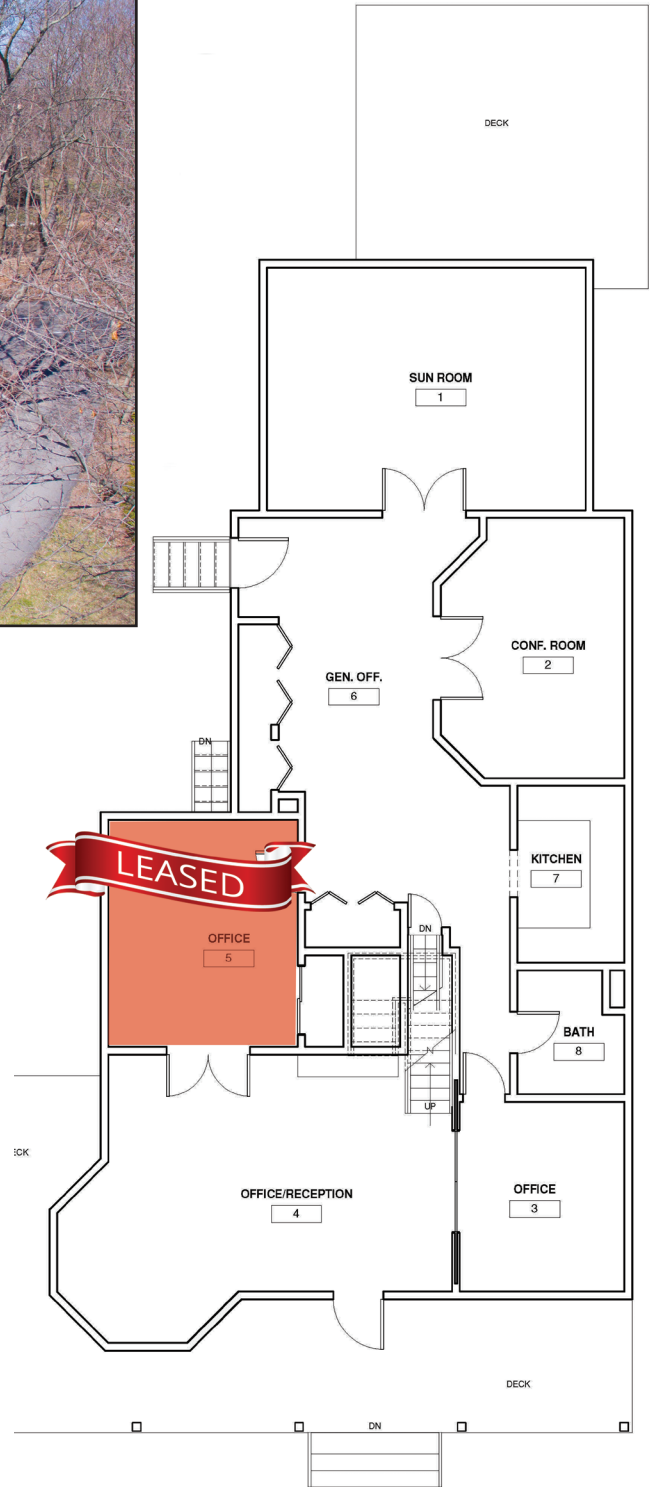


**FOR LEASE: \$17/SF**  
**BUILDING/OFFICES: 2,584 SF**

**FLOOR PLAN**



② 2nd Floor  
 1/4" = 1'-0"



① 1st Floor - House  
 1/4" = 1'-0"