

COLUMBIA DESIGN CENTER

8895 McGaw Road, Columbia, MD 21045
Howard County



RETAIL/SHOWROOM FOR LEASE

JOIN: **indoor furniture**
modern home & office furniture

THE VERTICAL CONNECTION
— Since 1977 —
CARPET ONE

sofas ETC
The Best Seats In The House.

NEARBY:

Jason's deli

SMOOTHIE KING

Wegmans
helping you make great meals easy

- 18,906 SF Available
- Located at the signalized intersection of Dobbin Road and McGaw Rd, adjacent to Wegmans in the heart of Howard County
- Regional site in close proximity to the Rt. 175 and Snowden River Parkway Interchange
- Loading dock available
- Ceiling clear height: 18'
- Zoning: New Town

Ryan Minnehan
rminnehan@klnb.com
443-632-2088

Michael Ginsburg
mginsburg@klnb.com
443-632-2041

Michael Patz
mpatz@klnb.com
443-632-2043

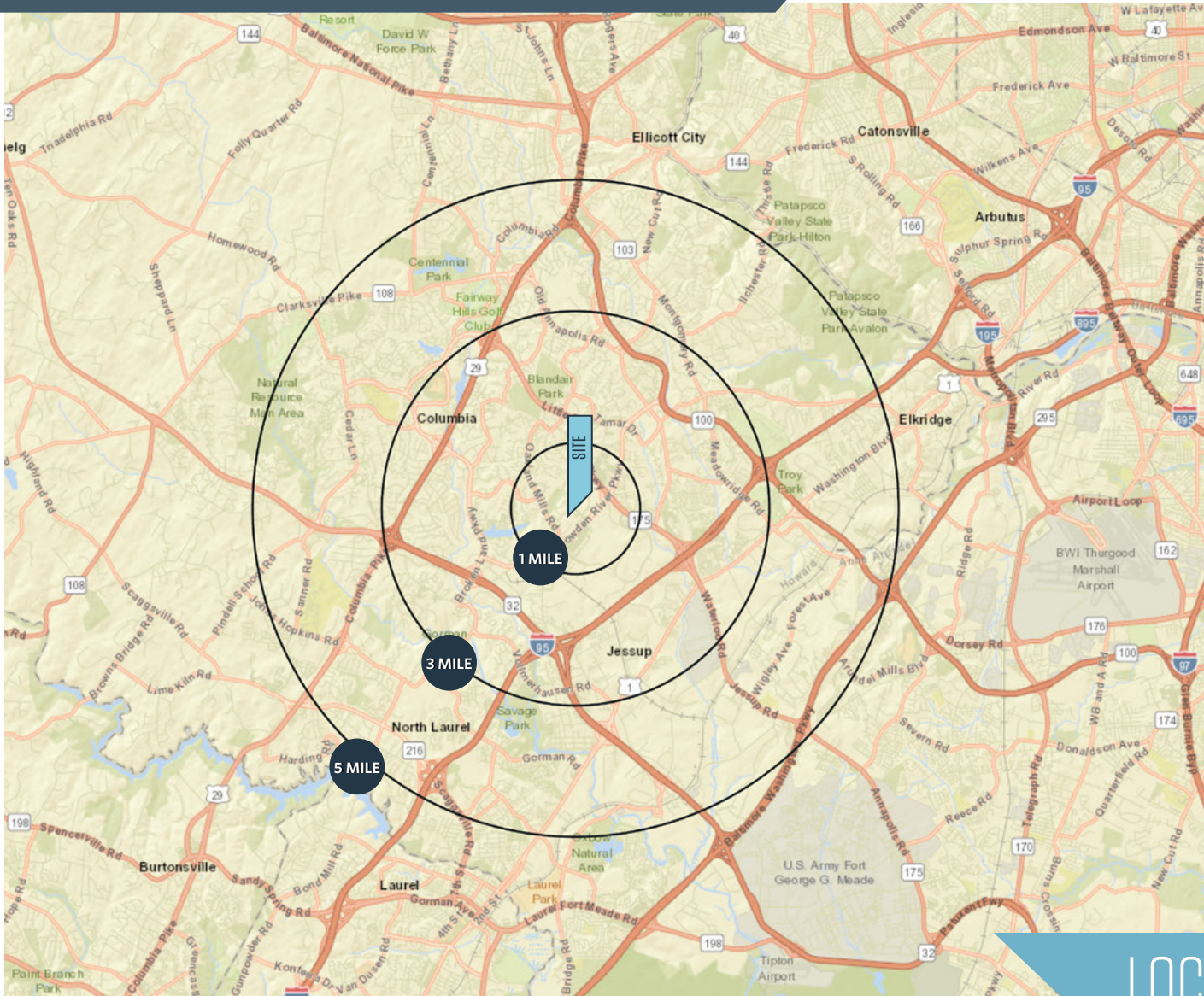
Bob Smith
bsmith@klnb.com
443-632-1411

100 West Road, Suite 505
Towson, MD 21204
klnb.com

klnb

COLUMBIA DESIGN CENTER

8895 McGaw Road, Columbia, MD 21045
Howard County



AVAILABLE SPACE

18,906 SF

DEMOGRAPHICS | 2017:

1-MILE	3-MILE	5-MILE
Population		
7,803	88,172	205,741
Daytime Population		
17,033	82,552	170,929
Households		
3,042	33,910	75,946
Average HH Income		
\$130,450	\$116,067	\$127,651

[CLICK TO DOWNLOAD DEMOGRAPHIC REPORT](#)

TRAFFIC COUNTS | 2017:

Snowden River Parkway	39,152 ADT
Dobbin Road	30,830 ADT

LOCATION & DEMOGRAPHICS

Ryan Minnehan
rminnehan@klnb.com
443-632-2088

Michael Ginsburg
mginsburg@klnb.com
443-632-2041

Michael Patz
mpatz@klnb.com
443-632-2043

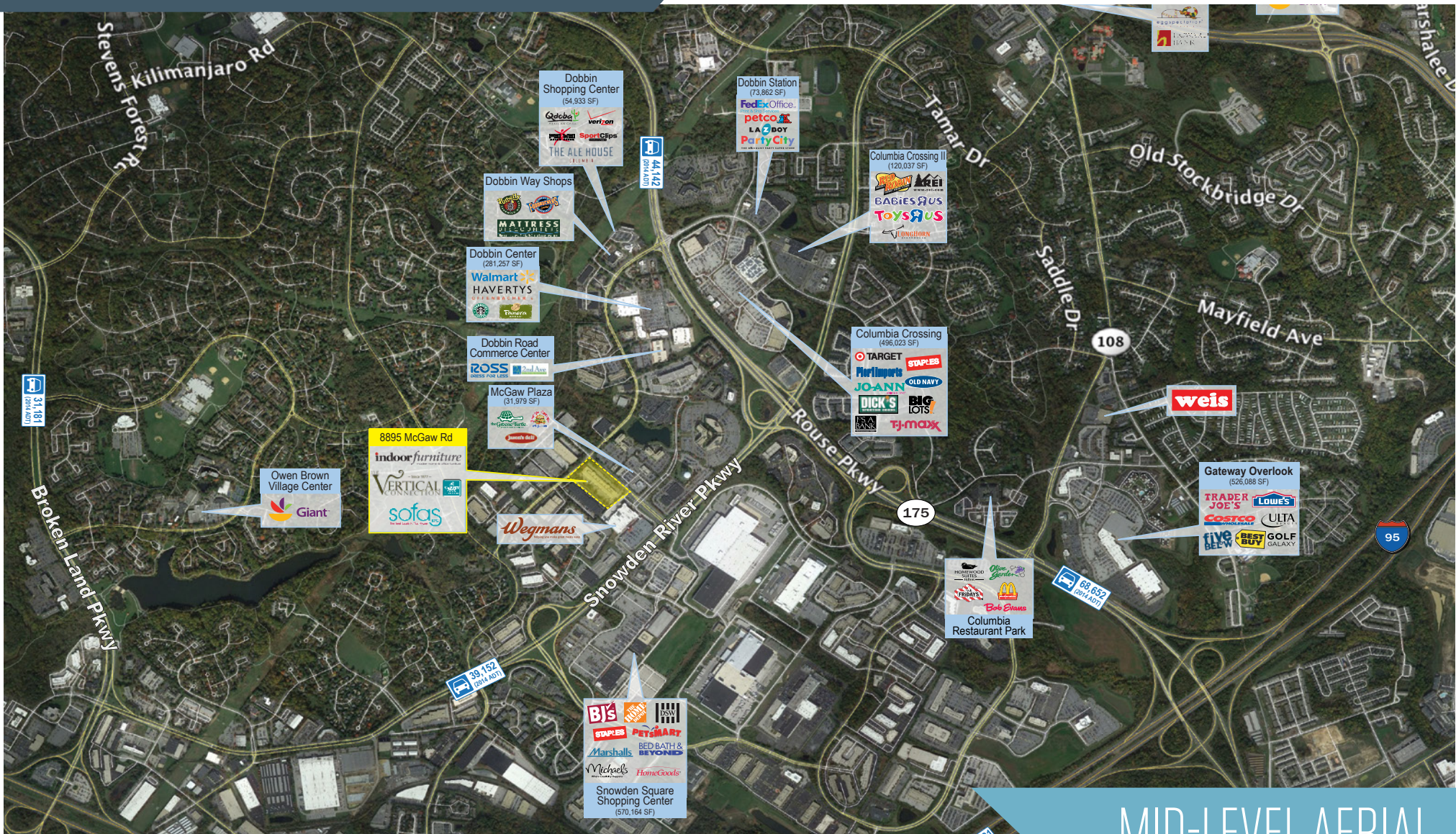
Bob Smith
bsmith@klnb.com
443-632-1411

100 West Road, Suite 505
Towson, MD 21204
klnb.com



COLUMBIA DESIGN CENTER

8895 McGaw Road, Columbia, MD 21045
Howard County



MID-LEVEL AERIAL

Ryan Minnehan
rminnehan@klnb.com
443-632-2088

Michael Ginsburg
mginsburg@klnb.com
443-632-2041

Michael Patz
mpatz@klnb.com
443-632-2043

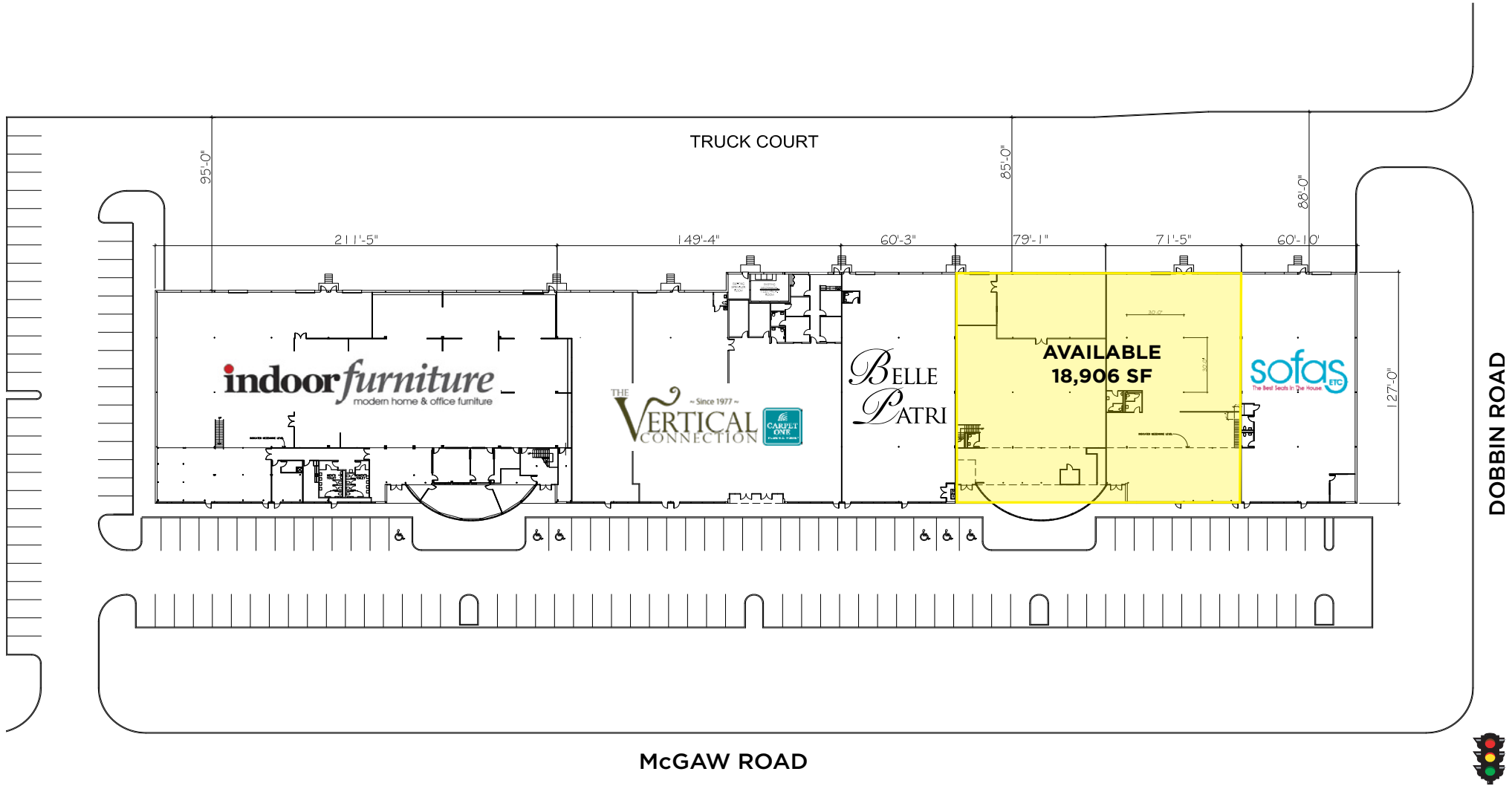
Bob Smith
bsmith@klnb.com
443-632-1411

100 West Road, Suite 505
Towson, MD 21204
klnb.com



COLUMBIA DESIGN CENTER

8895 McGaw Road, Columbia, MD 21045
Howard County



SITE PLAN

Ryan Minnehan
rminnehan@klnb.com
443-632-2088

Michael Ginsburg
mginsburg@klnb.com
443-632-2041

Michael Patz
mpatz@klnb.com
443-632-2043

Bob Smith
bsmith@klnb.com
443-632-1411

100 West Road, Suite 505
Towson, MD 21204
klnb.com

klnb

COLUMBIA DESIGN CENTER

8895 McGaw Road, Columbia, MD 21045
Howard County

CLICK TO VIEW PROPERTY WEBSITE

For More Information, Please Contact:

Ryan Minnehan

rminnehan@klnb.com
443-632-2088

Michael Ginsburg

mginsburg@klnb.com
443-632-2041

Michael Patz

mpatz@klnb.com
443-632-2043

Bob Smith

bsmith@klnb.com
443-632-1411

100 West Road, Suite 505
Towson, MD 21204

klnb.com

 facebook.com/KLNB

 [@KLNBLLC](https://twitter.com/KLNBLLC)

 linkedin.com/company/klnb

 instagram.com/klnbllc

While we have no reason to doubt the accuracy of any of the information supplied, we cannot, and do not, guarantee its accuracy. All information should be independently verified prior to a purchase or lease of the property. We are not responsible for errors, omissions, misuse, or misinterpretation of information contained herein and make no warranty of any kind, express or implied, with respect to the property or any other matters.

klnb