
75 ACRES INDUSTRIAL LAND AVAILABLE

tbd Keezletown Road, Mount Sidney, VA 24467

Executive Summary



OFFERING SUMMARY

Sale Price: \$2,700,000

Lot Size: 75.0 Acres

Zoning: GI

Tax Map Parcels: 5 Separate

Utilities: Public Water Available
Public Sewer Available

MLS#: 595196



PROPERTY OVERVIEW

Rare large Industrial parcel with potential Rail access, Interstate 81 frontage and easy access to Exit 235, US 11, Weyers Cave, and Mt. Sidney. All utilities to parcel. Bounded by I81 to the west, Railroad line to the north and Keezletown Rd. to the south. Near Triangle Dr. Industrial Park. Ideal location for either truck-oriented or rail-oriented distribution or manufacturing facility. 75+/- ac. in 5 tax map parcels offering lots of flexibility. Bring your ideas.

For More Information:

Jeremy Litwiller

540.421.8293

jeremy.litwiller@cottonwood.com

COTTONWOOD
COMMERCIAL
A COMMERCIAL REAL ESTATE BROKERAGE

75 ACRES INDUSTRIAL LAND AVAILABLE

tbd Keezletown Road, Mount Sidney, VA 24467

Additional Photos



For More Information:

Jeremy Litwiller

540.421.8293

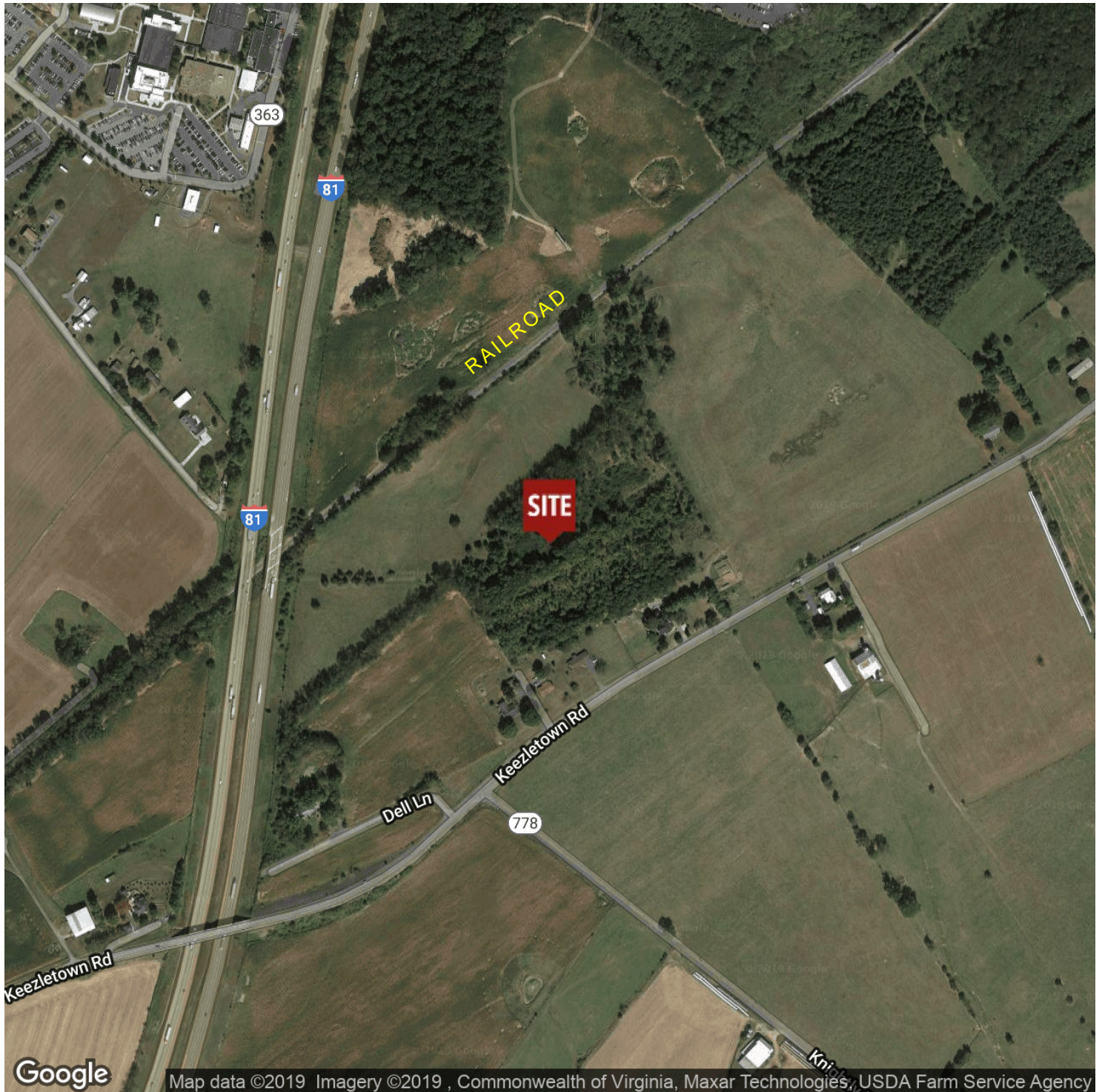
jeremy.litwiller@cottonwood.com

COTTONWOOD
COMMERCIAL
A COMMERCIAL REAL ESTATE BROKERAGE

75 ACRES INDUSTRIAL LAND AVAILABLE

tbd Keezletown Road, Mount Sidney, VA 24467

Location Maps



For More Information:

Jeremy Litwiller

540.421.8293

jeremy.litwiller@cottonwood.com

**COTTONWOOD
COMMERCIAL**
A COMMERCIAL REAL ESTATE BROKERAGE