



**Second Floor Space Available**

530

**W. Lancaster Avenue**  
Wayne, PA

Partnership. Performance.

## SECOND FLOOR SPACE AVAILABLE FOR LEASE

*Prime Location Along West Lancaster Avenue*

- Availability:**
- > 6,000 SF of second floor space
  - > Perfect opportunity for a gym, salon, health center or similar user
  - > Signage opportunity along heavily-trafficked Route 30
- Location:**
- > Ideal location along Route 30 (W. Lancaster Avenue)
  - > Surrounded by a variety of eateries and other amenities
  - > .3 miles away from the Strafford Train Station
- Lease Rate:**
- > \$20.00 /SF NNN



Platinum member

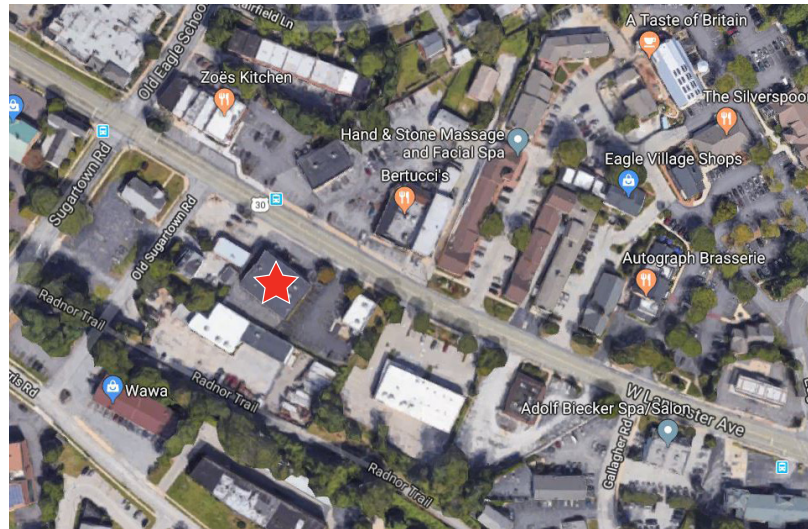
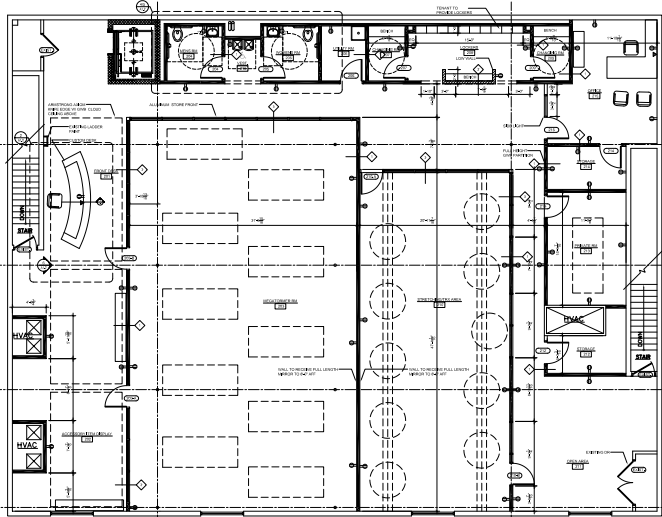
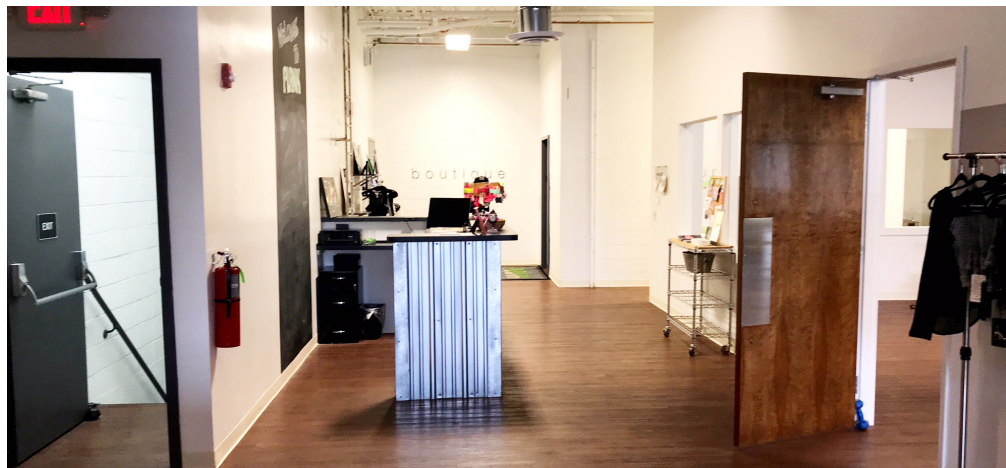
**Scott Williams, Principal**  
D 610.276.3147  
C 610.721.9912  
scott.williams@avisonyoung.com

**Cathy Swanson, Senior Associate**  
D 610.276.3150  
C 610.812.1878  
cathy.swanson@avisonyoung.com



# SECOND FLOOR SPACE AVAILABLE FOR LEASE

530 W. LANCASTER AVENUE, WAYNE, PA



[avisonyoung.com](http://avisonyoung.com)

©2018 Avison Young - Philadelphia LLC. All rights reserved. The information contained herein is believed to be true; it has not been verified and as such, cannot be warranted nor form any part of any future contract.