



CBRE

**CLASS "A" MEDICAL
OFFICES FOR LEASE**

7930

8008

8010

FROST STREET MEDICAL CENTER

SAN DIEGO CA 92123



PROPERTY HIGHLIGHTS

7930



- Class "A" Medical Office Project
- 739 SF - 12,971 SF Available
- Lease Rate: Negotiable
- Part of a 3-building medical office campus totaling 174,506 SF
- Adjacent to Rady Children's Hospital, Sharp Memorial Hospital, and Mary Birch Hospital for Women
- Easy access to both I-805 and Highway 163
- Structure, surface and reserve parking with attendants from \$45 - \$65 per month
- On-site professional property management
- Tenant mix includes: Rady Children's Medical Group, Sharp Medical, Lab, etc.

8008



8010





AVAILABILITIES

7930 FROST STREET

SUITE	STATUS	SIZE (SF)
Suite 206	Vacant	3,786
Suite 404	Vacant	1,108

8008 FROST STREET

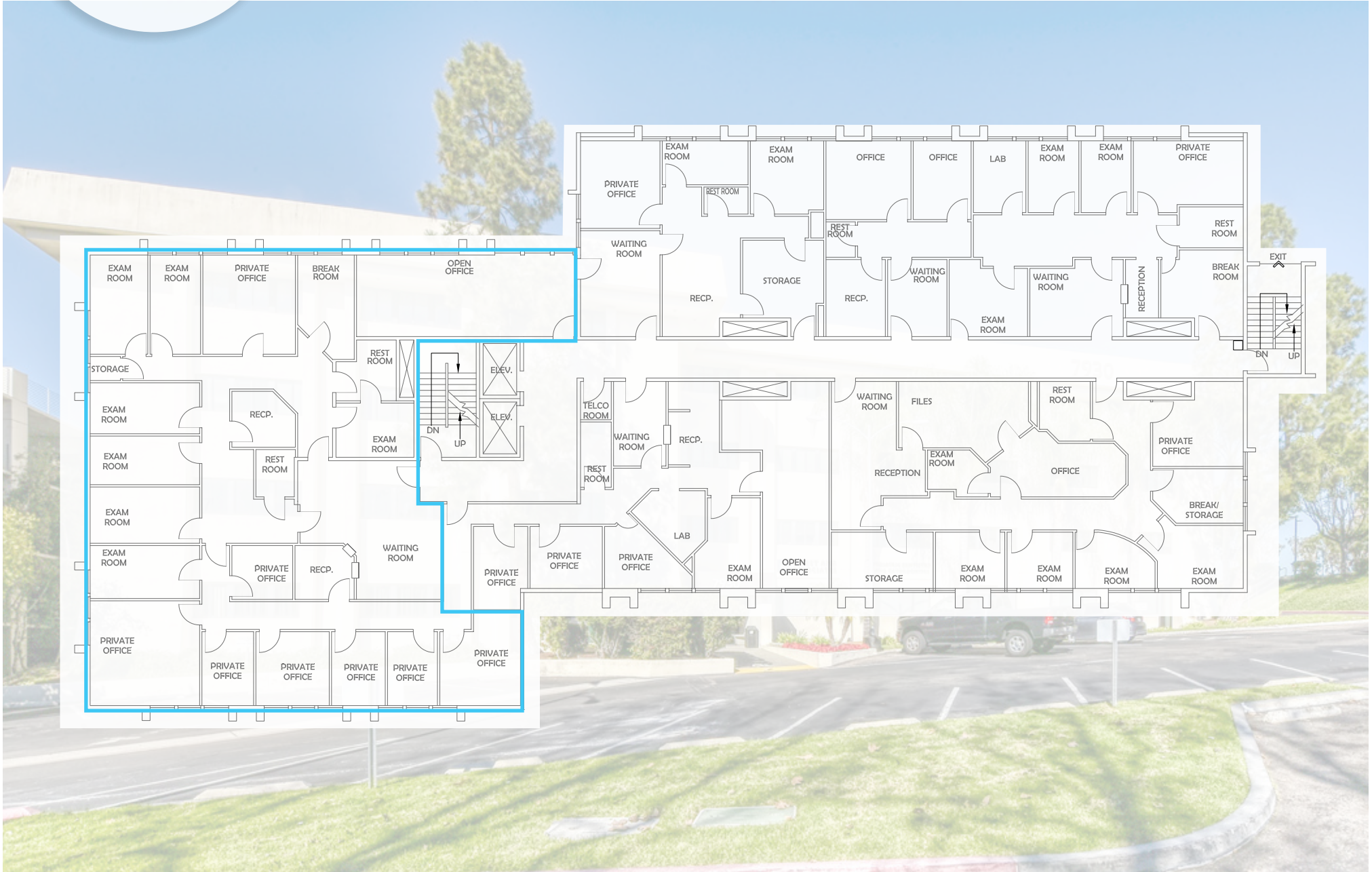
SUITE	STATUS	SIZE (SF)
Suite 250SH	Vacant	2,500
Suite 251SH	Vacant	2,094
Suite 301	Vacant	1,227
Suite 304ST	Vacant	738
Suite 400	Vacant	2,489
Suite 406	Vacant	1,612
Suite 407	Vacant	2,054

8010 FROST STREET

SUITE	STATUS	SIZE (SF)
Suite 102	Vacant	1,958
Suite 402	Vacant	2,342
Suite 403	Vacant	739
Suite 501A	Vacant	862
Suite 600	Avail 2/1/19	11,238

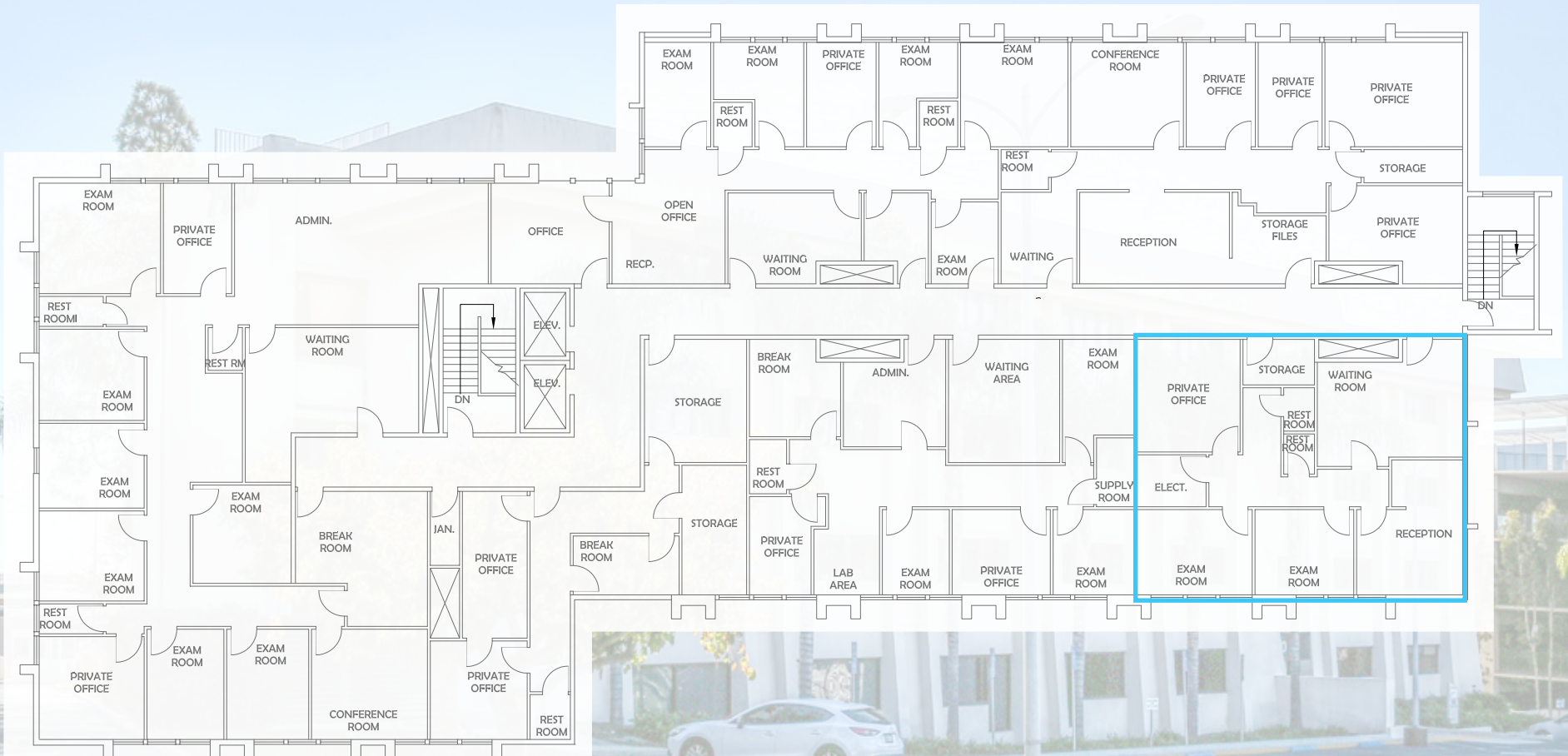
FLOOR 2

7930 FROST STREET | FLOOR 2 STE 206; 3,786SF



FLOOR 4

7930 FROST STREET | FLOOR 4 STE 404; 1,108SF



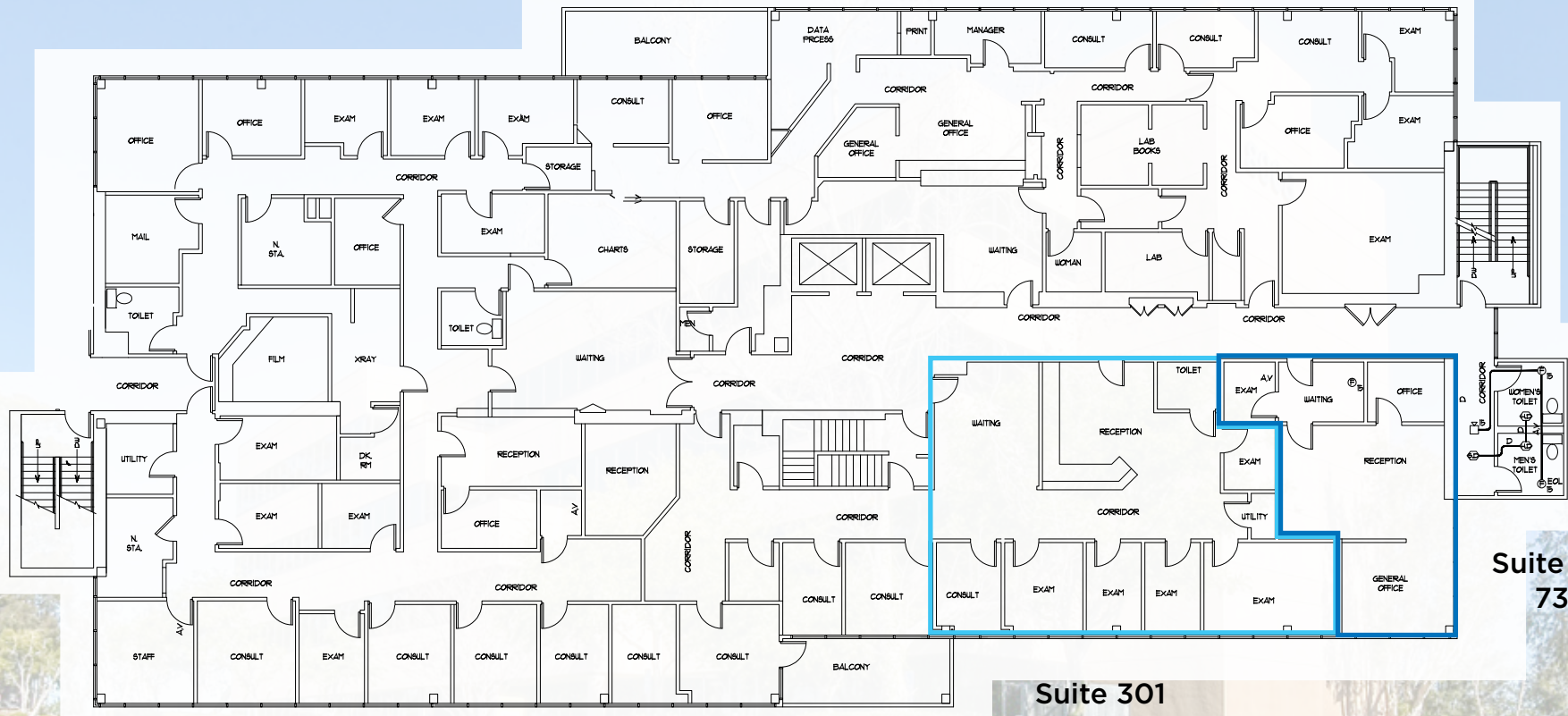
FLOOR 2

8008 FROST STREET | FLOOR 2 STE 250SH; 4,594 SF IN SHELL CONDITION



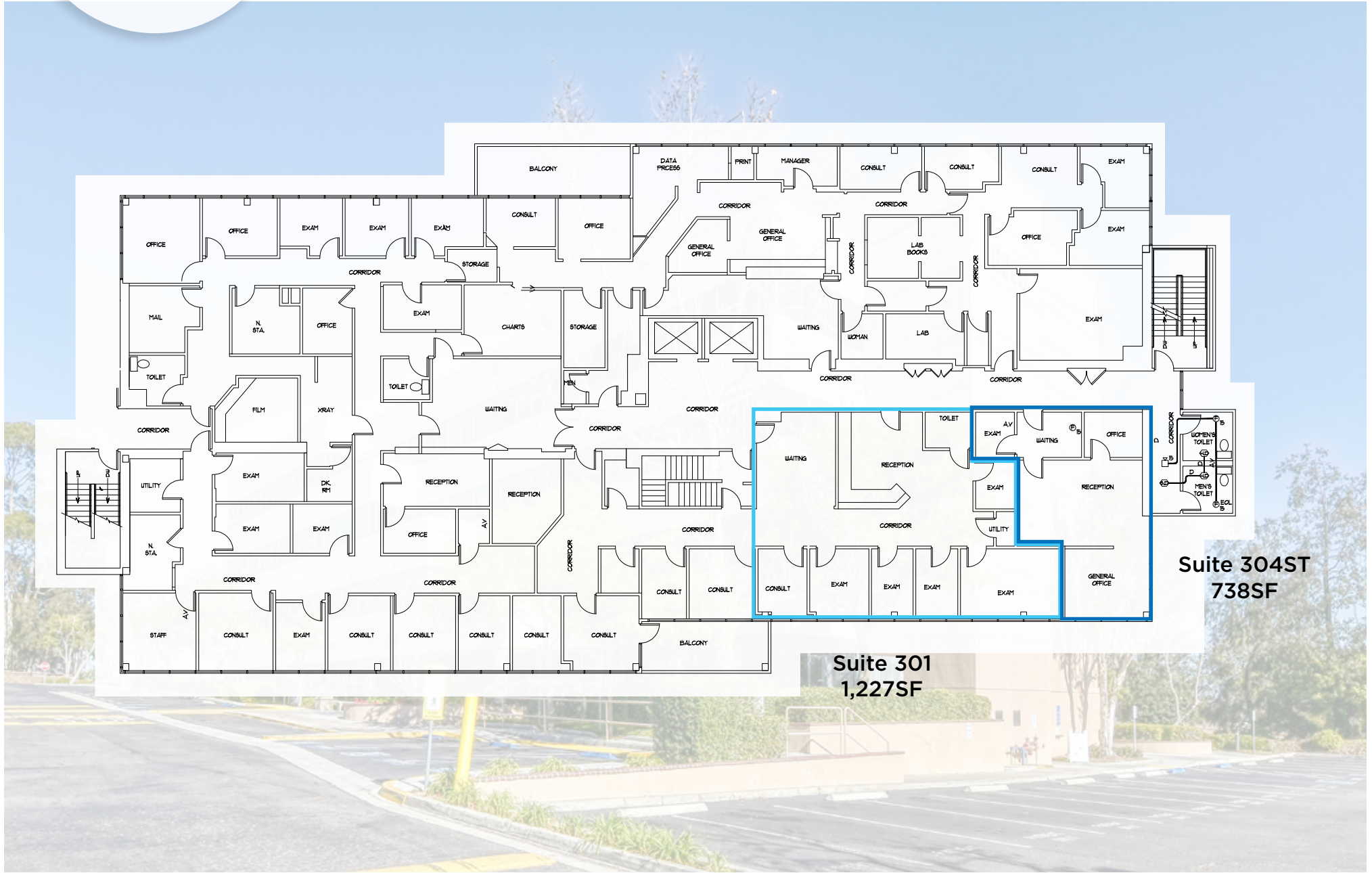
FLOOR 3

8008 FROST STREET | FLOOR 3 STE 301; 1,227SF
304ST; 738SF



Suite 301
1,227SF

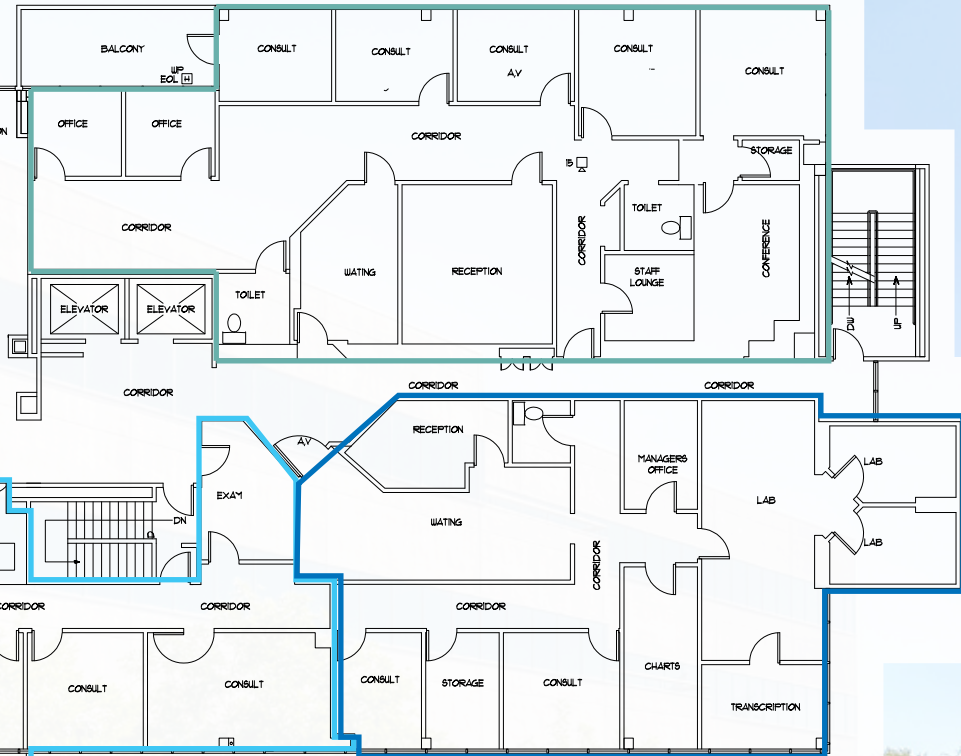
Suite 304ST
738SF



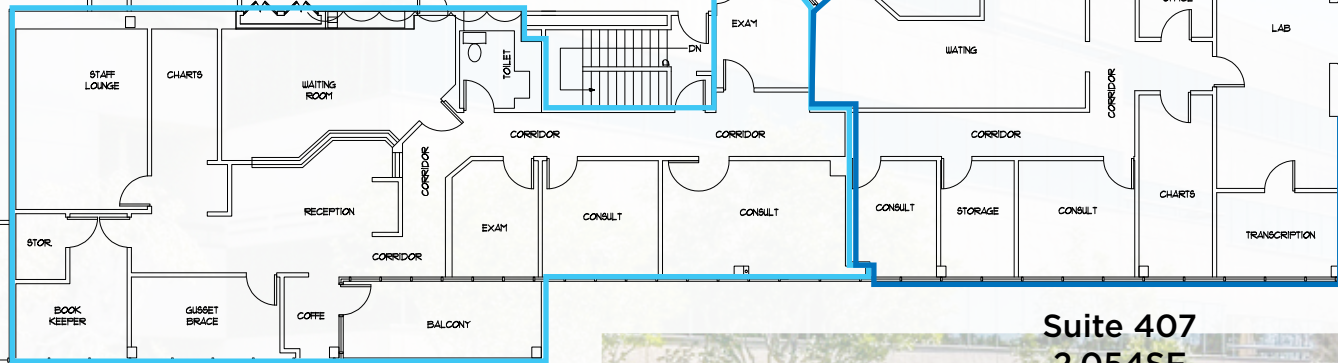
FLOOR 4

8008 FROST STREET | FLOOR 4 STE 400; 2,489SF
406; 1,612SF
407; 2,054SF

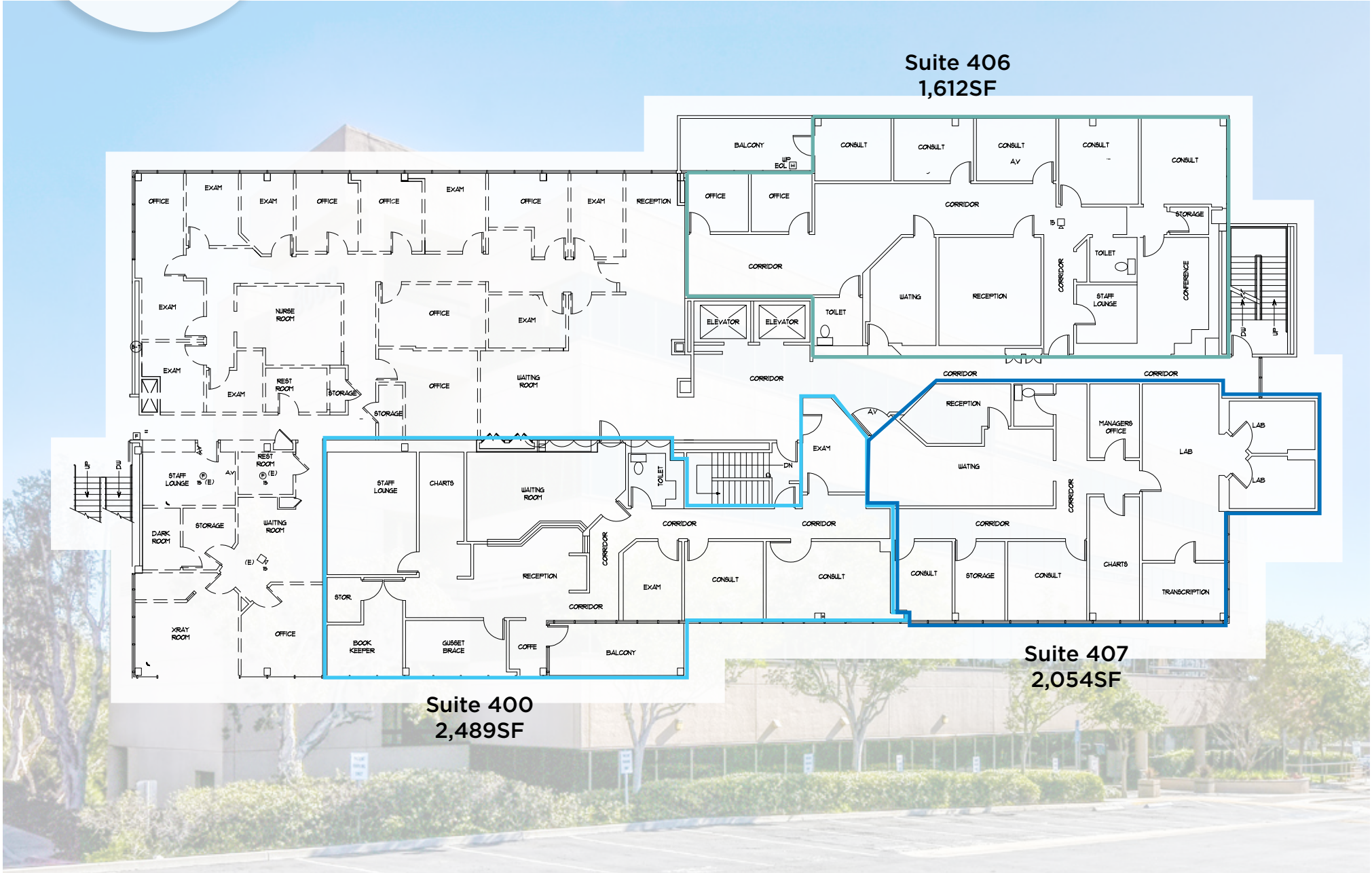
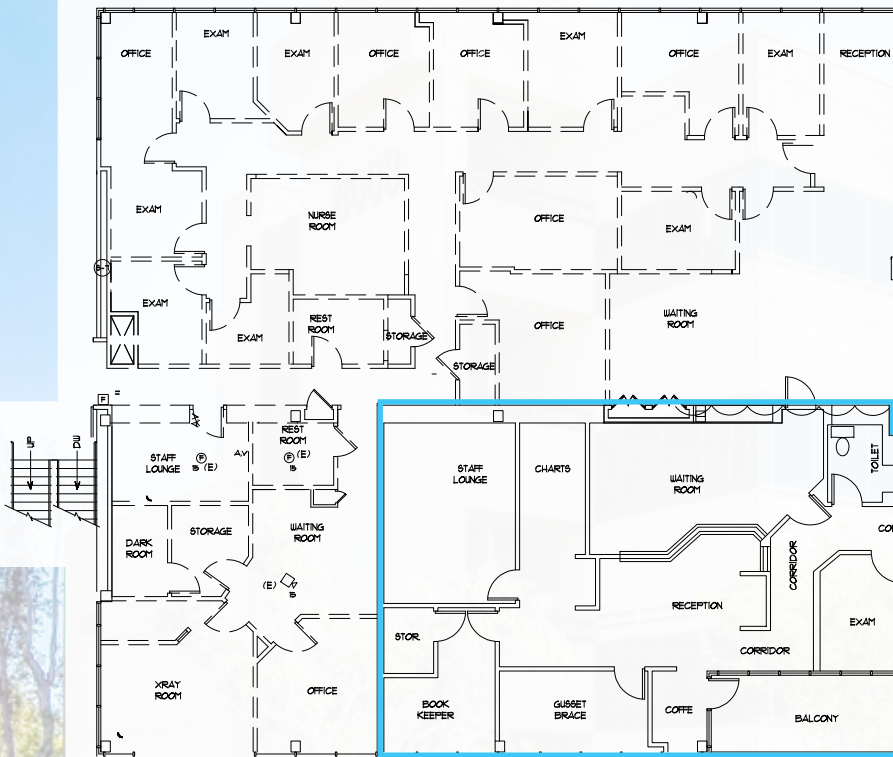
Suite 406
1,612SF



Suite 407
2,054SF



Suite 400
2,489SF



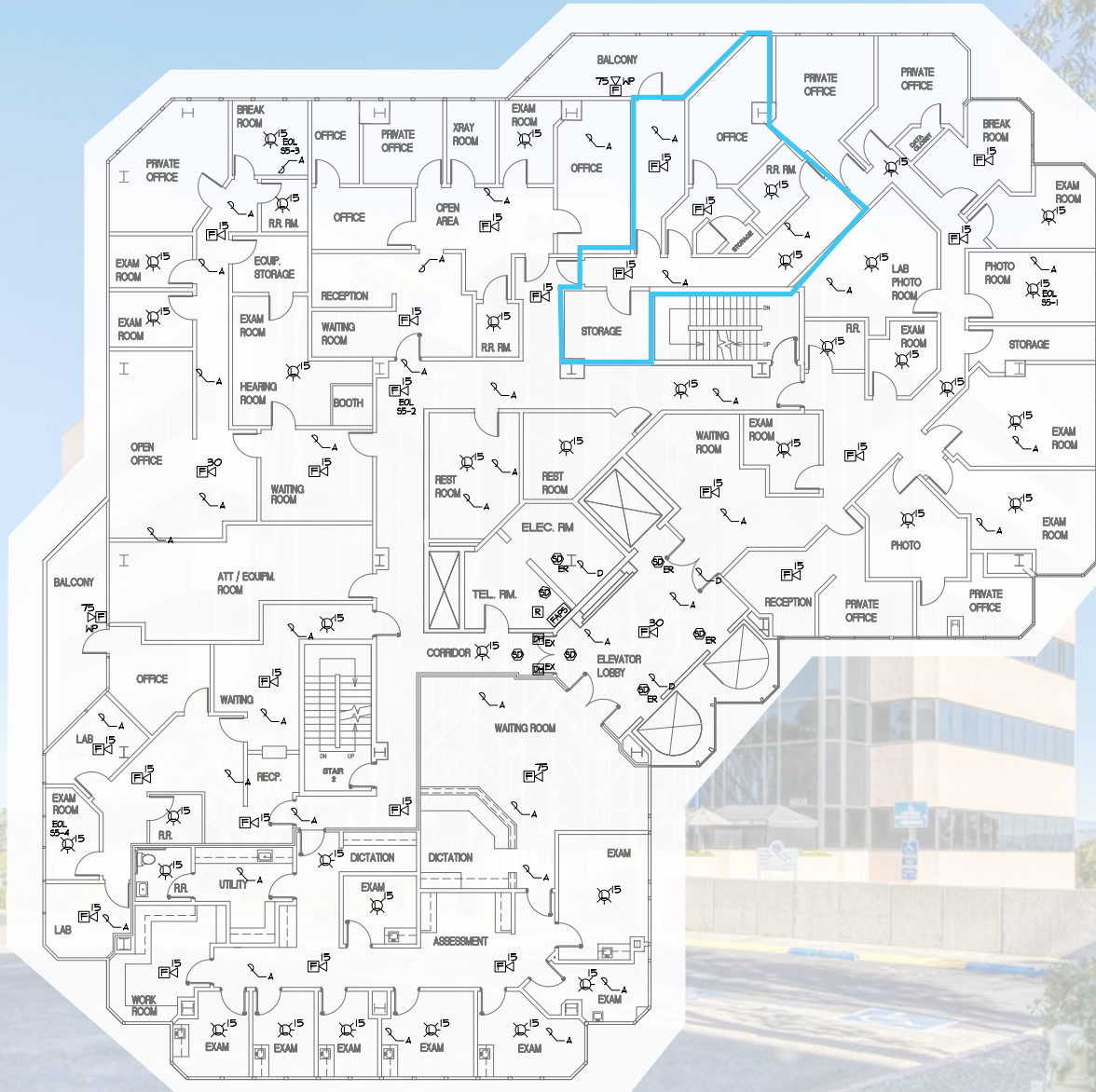
FLOOR 1

8010 FROST STREET | FLOOR 1 STE 102; 1,958SF



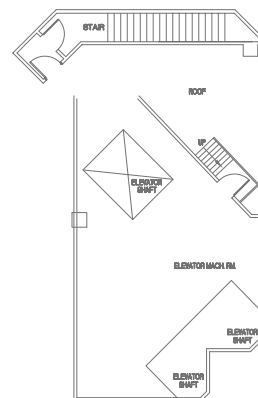
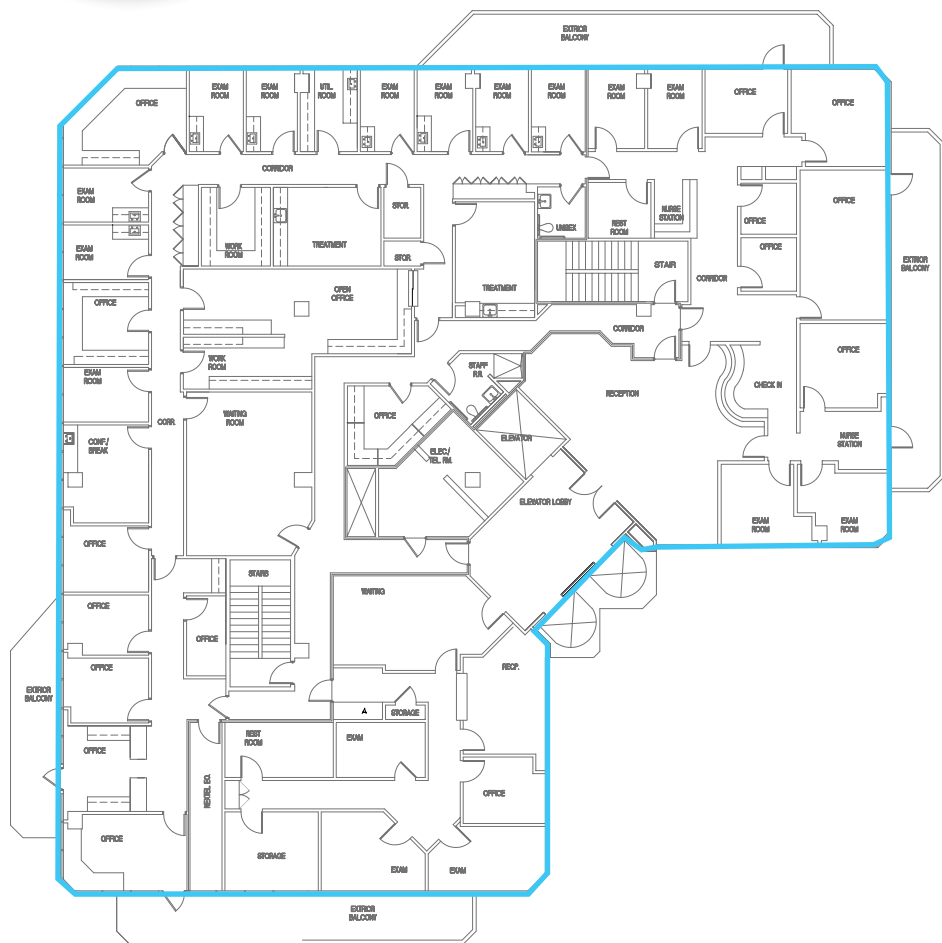
FLOOR 5

8010 FROST STREET | FLOOR 5 STE 501A; 862SF



FULL FLOOR OPPORTUNITY

8010 FROST STREET | 6TH FLOOR | 11,238 RSF



NEARBY HOSPITALS

FROST ST. MEDICAL CENTER

Kaiser Permanente Clairemont Mesa

Sharp Memorial Hospital

Mary Birch Hospital for Women

Rady Children's Hospital

Sharp Mesa Vista Hospital

Lars Eisenhauer
Vice President
Lic. 01372911
+1 760 438 8534
lars.eisenhauer@cbre.com

Dan Henry
Vice President
Lic. 02035998
+1 760 438 8569
dan.henry@cbre.com

CBRE

© 2018 CBRE, Inc. All rights reserved. This information has been obtained from sources believed reliable, but has not been verified for accuracy or completeness. Any projections, opinions, or estimates are subject to uncertainty. The information may not represent the current or future performance of the property. You and your advisors should conduct a careful, independent investigation of the property and verify all information. Any reliance on this information is solely at your own risk. CBRE and the CBRE logo are service marks of CBRE, Inc. and/or its affiliated or related companies in the United States and other countries. All other marks displayed on this document are the property of their respective owners. Photos herein are the property of their respective owners and use of these images without the express written consent of the owner is prohibited. PMStudio_Dec2018