

1190 SARATOGA AVENUE

±1,112 TO ±8,120 SF FOR LEASE

Retirement
CAPITAL STRATEGIES

1190 SARATOGA AVENUE

FARMERS INSURANCE
RETIREMENT CAPITAL STRATEGIES
WILLIAM JESSUP UNIVERSITY
HEDGE TRACKERS, LLC

BLACK TECHNOLOGIES ADV

VERIENT

SK EDUCATION

NORTHWESTERN MUTUAL

RICTEK

LIAM MARTIN
408.436.3619
liam.martin@cushwake.com
LIC #02081625

STEVE PACE
408.482.7037
steve.pace@cushwake.com
LIC #00817396

DAN HOLLINGSWORTH
408.615.3431
dan.hollingsworth@cushwake.com
LIC #01117716



1190 SARATOGA AVENUE

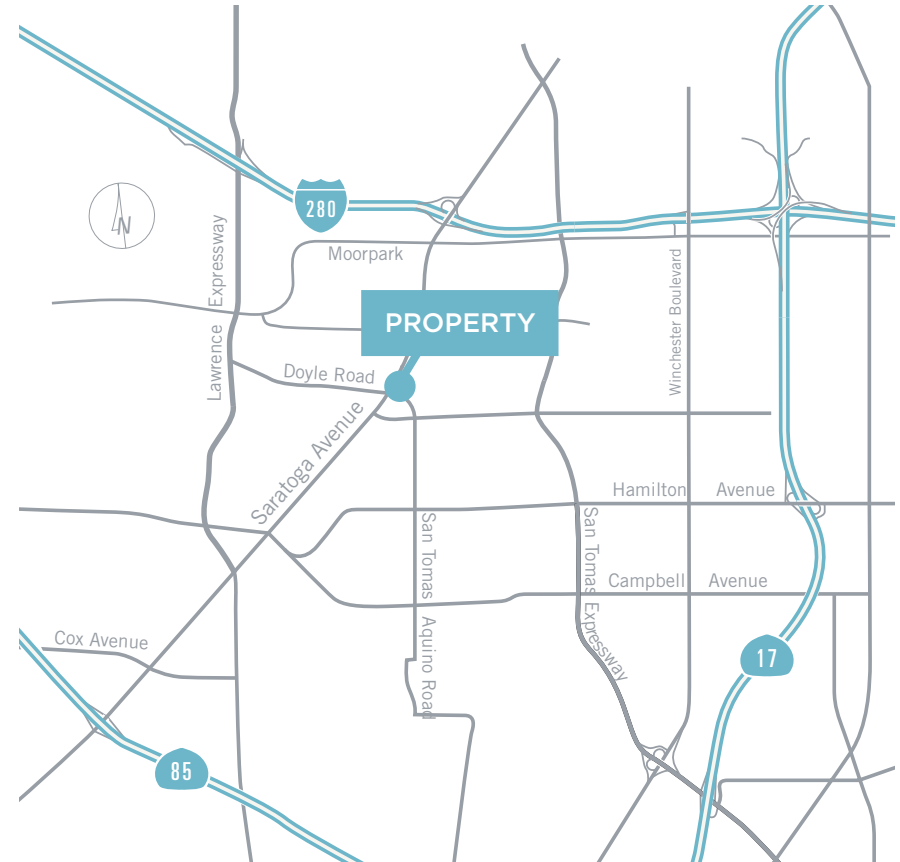
±1,112 - ±8,120 SF

LOCATION HIGHLIGHTS

- Prominent Location with Excellent Identity on Saratoga Ave
- Desirable Two Story Building with Structured Parking
- Close Proximity to Restaurants / Hotels / Retail
- Immediate Access to Hwys. 280 & 85
- Conveniently Located Near Cupertino, Campbell & Saratoga

BUILDING HIGHLIGHTS

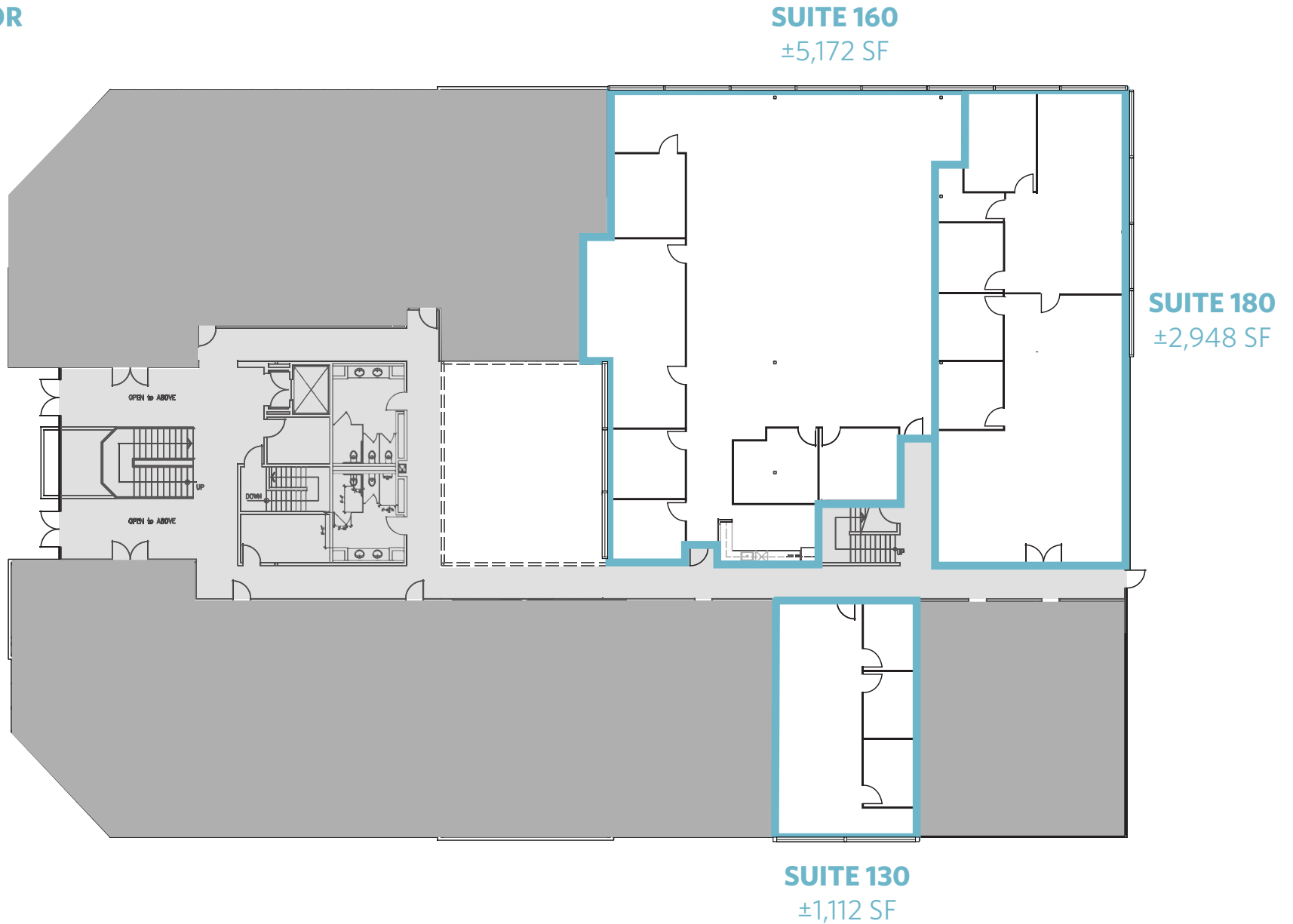
- Great Window Line
- 1st and 2nd Floor Suites Available
- Plenty of Natural Light
- Privates, Open Office and Conference Rooms
- Secure Parking Garage Directly Under Building
- Charming Atrium in Common Area



1190 SARATOGA AVENUE

±1,112 - ±8,120 SF

FIRST FLOOR



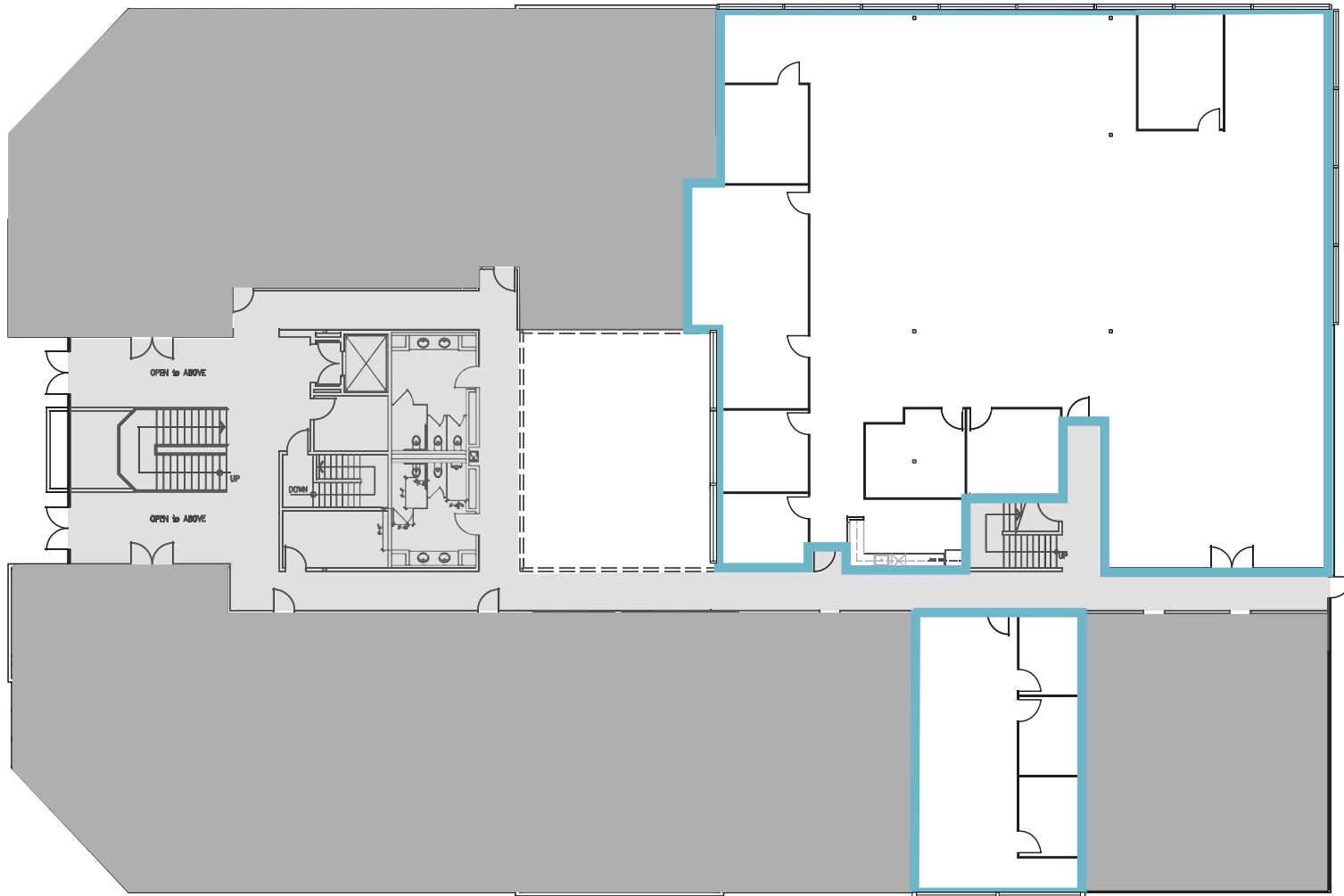
1190 SARATOGA AVENUE

±1,112 - ±8,120 SF

FIRST FLOOR - HYPOTHETICAL LAYOUT

SUITE 160 + SUITE 180

±8,120 SF



SUITE 130

±1,112 SF

1190 SARATOGA AVENUE

±1,112 - ±8,120 SF

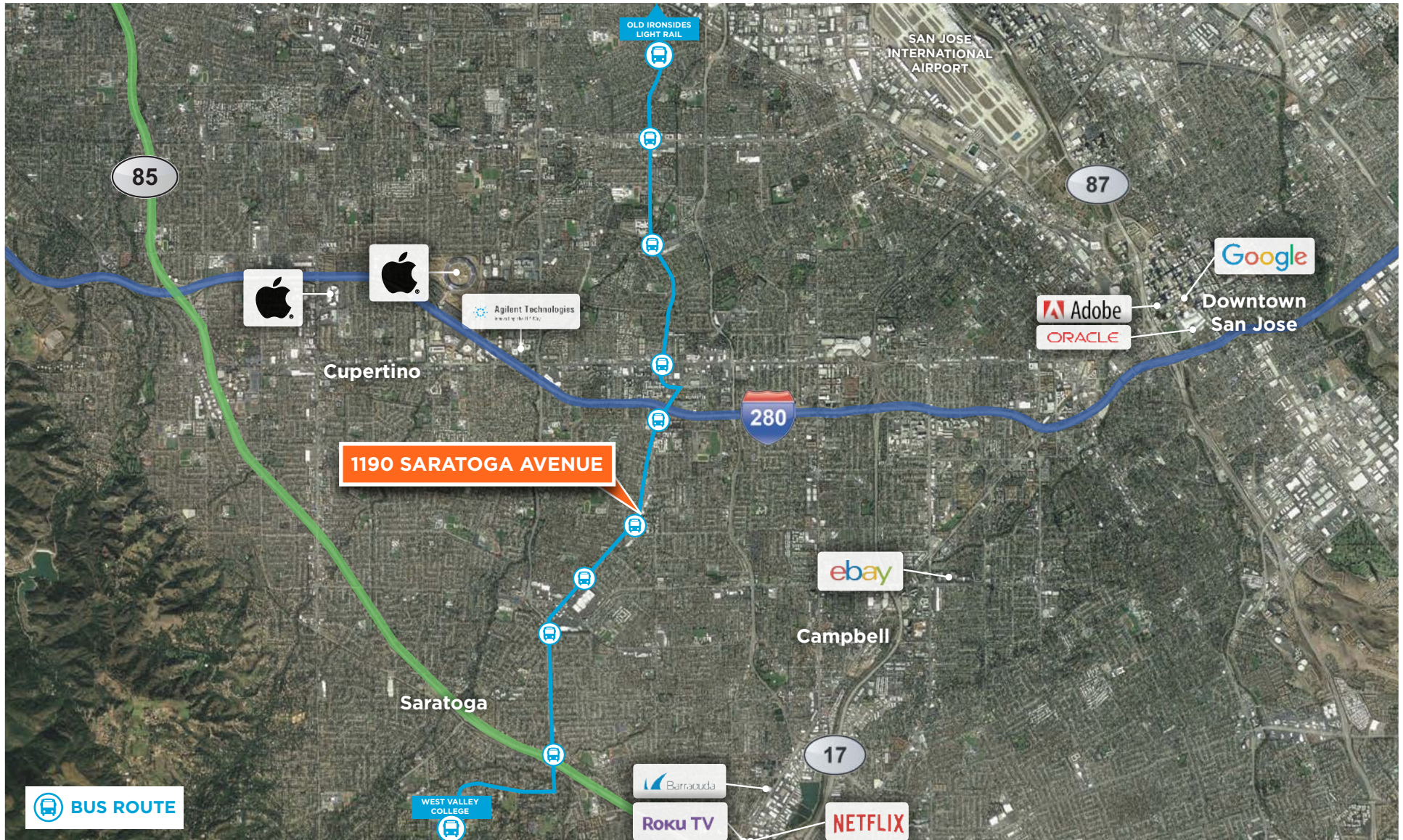
PHOTOS



1190 SARATOGA AVENUE

±1,112 - ±8,120 SF

AERIAL



1190 SARATOGA AVENUE

±1,112 - ±8,120 SF

AREA AMENITIES

