

FOR SALE OR LEASE
2330
GOLD MEADOW WAY
GOLD RIVER, CA

± 24,000 RSF AVAILABLE

**Walking Distance to Gold River Racquet Club and
Upscale Gold River Shopping and Restaurants, Easy
access to Highway 50, Professional Office Campus**



FOR MORE INFORMATION, PLEASE CONTACT:

CHRIS SCHWARZE | EXECUTIVE DIRECTOR

+1 916 288 4803

chris.schwarze@cushwake.com

CA LIC #01291261

400 Capitol Mall Suite 1800

Sacramento, CA 95814

+1 916 288 4800

cushmanwakefield.com

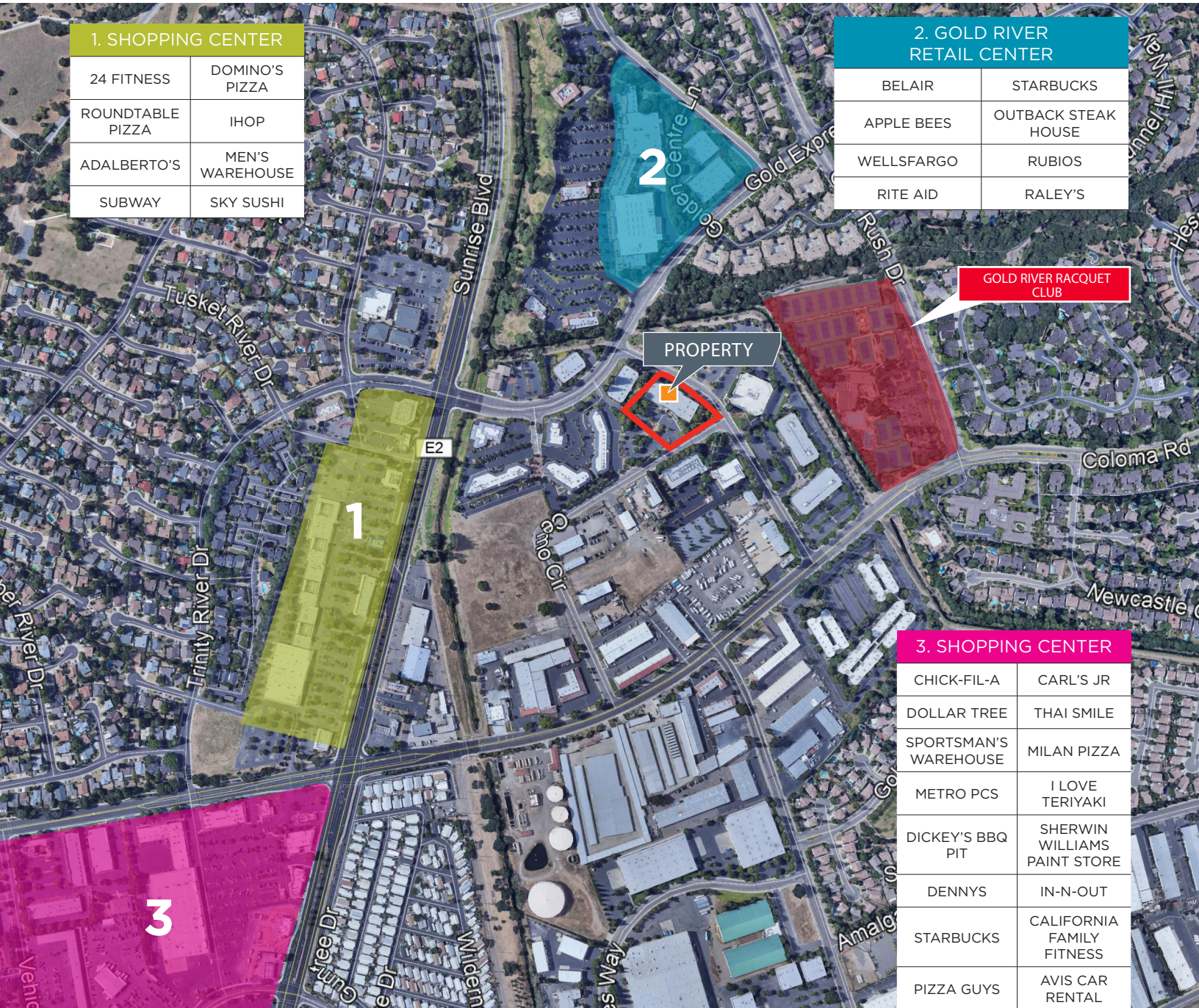
Cushman & Wakefield Copyright 2019. The information contained herein was lawfully obtained from sources we consider reliable. Cushman & Wakefield is not responsible and expressly disclaims all liability, for errors, omissions, prior sales, withdrawal from the market or change in price. Seller (or Lessor, as the case may be) and broker make no representation as to the environmental condition of the property and recommend Purchaser's (or Lessee's) independent investigation.

FOR SALE OR LEASE

2330

GOLD MEADOW WAY

GOLD RIVER, CA



1. SHOPPING CENTER

24 FITNESS	DOMINO'S PIZZA
ROUNDTABLE PIZZA	IHOP
ADALBERTO'S	MEN'S WAREHOUSE
SUBWAY	SKY SUSHI

2. GOLD RIVER RETAIL CENTER

BELAIR	STARBUCKS
APPLE BEES	OUTBACK STEAK HOUSE
WELLSFARGO	RUBIOS
RITE AID	RALEY'S

3. SHOPPING CENTER

CHICK-FIL-A	CARL'S JR
DOLLAR TREE	THAI SMILE
SPORTSMAN'S WAREHOUSE	MILAN PIZZA
METRO PCS	I LOVE TERIYAKI
DICKEY'S BBQ PIT	SHERWIN WILLIAMS PAINT STORE
DENNYS	IN-N-OUT
STARBUCKS	CALIFORNIA FAMILY FITNESS
PIZZA GUYS	AVIS CAR RENTAL

CHRIS SCHWARZE | EXECUTIVE DIRECTOR

+1 916 288 4803
 chris.schwarze@cushwake.com
 CA LIC #01291261

400 Capitol Mall Suite 1800
 Sacramento, CA 95814
 +1 916 288 4800
cushmanwakefield.com

© Cushman & Wakefield. This information has been obtained from sources believed reliable. We have not verified it and make no guarantee, warranty or representation about it. Any projections, opinions, assumptions or estimates used are for example only and do not represent the current or future performance of the property. You and your advisors should conduct a careful, independent investigation of the property to determine to your satisfaction the suitability of the property for your needs.

FOR LEASE

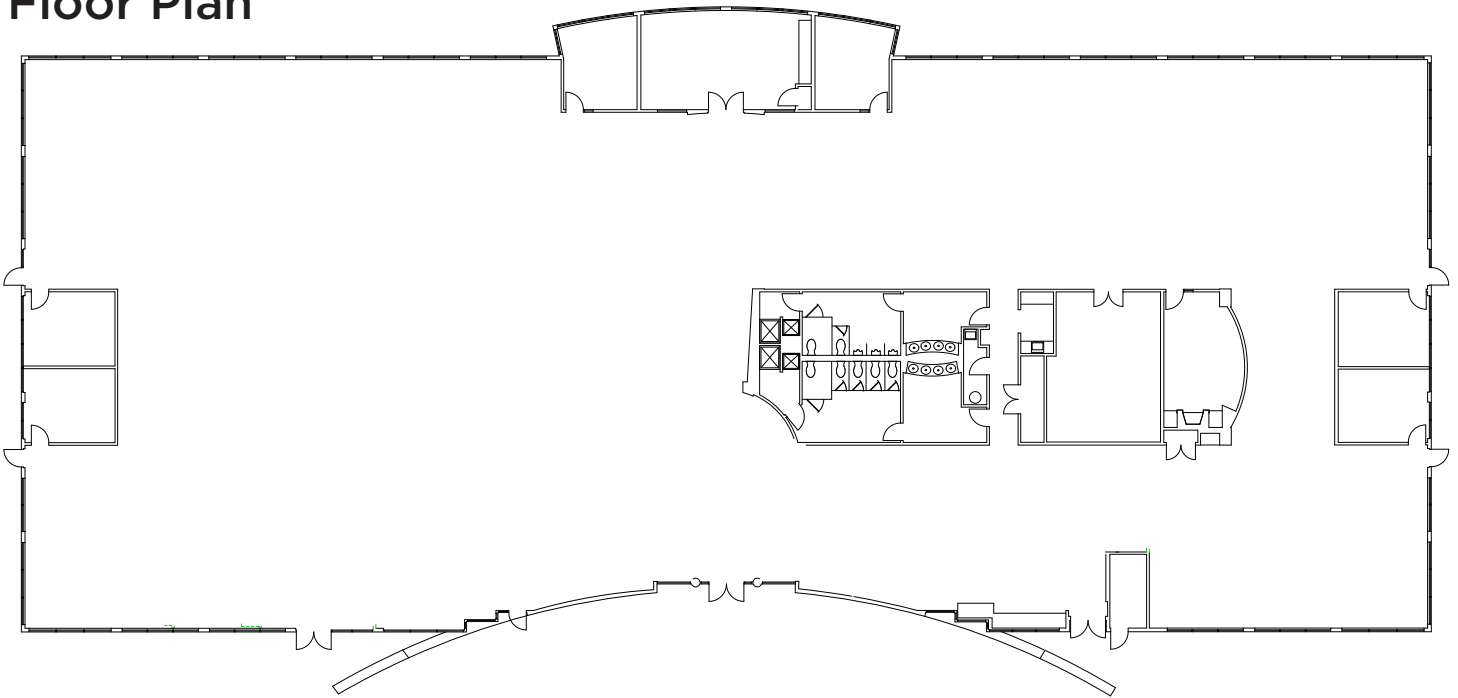
2330

GOLD MEADOW WAY

GOLD RIVER, CA



Floor Plan



Property Photos



CHRIS SCHWARZE | EXECUTIVE DIRECTOR

+1 916 288 4803

chris.schwarze@cushwake.com

CA LIC #01291261

400 Capitol Mall Suite 1800

Sacramento, CA 95814

+1 916 288 4800

cushmanwakefield.com

© Cushman & Wakefield. This information has been obtained from sources believed reliable. We have not verified it and make no guarantee, warranty or representation about it. Any projections, opinions, assumptions or estimates used are for example only and do not represent the current or future performance of the property. You and your advisors should conduct a careful, independent investigation of the property to determine to your satisfaction the suitability of the property for your needs.