

STONY ISLAND PLAZA

95TH ST & STONY ISLAND AVE



MID-AMERICA[®]
Asset Management, Inc.

Owned By: 
NewMark Merrill
COMPANIES



RETAIL OPPORTUNITY



95TH ST & STONY ISLAND AVE

Address

SEC 95th Street
& Stony Island Avenue
Chicago, IL

Availability

1,190–2,765 SF
Potential Availability: 9,800 SF

Co-Tenants

Jewel-Osco

dd's
DISCOUNTS

ATHLETICO
PHYSICAL THERAPY

Foot Locker

DTLR



AMERICA'S BEST
CONTACTS & EYEGLASSES

KFC

H&R BLOCK

Features

- Over 83,000 reside within a 2 mile radius
- Chicago State University and Olive-Harvey College (\pm 16,725 students combined) located approximately 1.5 miles from site
- Monument signage and 742 parking spaces available
- On-site Pace bus service and CTA bus stop on 95th Street with lighted access
- Close proximity to the 50, 57 and 94 freeways
- Traffic counts at the corner of Stony Island Ave & 95th St exceed 76,000 vehicles per day

Demographics

	1 Mile	2 Miles	3 Miles
POPULATION	16,435	83,436	200,247
HOUSEHOLDS	6,530	32,567	77,052
AVG HOUSEHOLD INCOME	\$63,070	\$55,397	\$57,372
DAYTIME POPULATION	15,717	71,362	174,708





STONY ISLAND PLAZA

95TH ST & STONY ISLAND AVE

Stony Island Avenue: 56,100 vpd

95th Street: 20,000 vpd



Suite	Tenant	SF
1615	Circle K	4,000
1617	KFC	2,685
1619	Snipes (Coming Soon)	5,000
1623	Available	1,190
1625	Available	2,765
1627	Happy Nails	3,500

Suite	Tenant	SF
1631	Ashley Stewart	3,640
1637	Cosmo Superstore (Potential Availability)	9,800
1655	Jewel-Osco	70,000
1709	dd's Discounts	24,960
1715	Oak Street Health	10,080

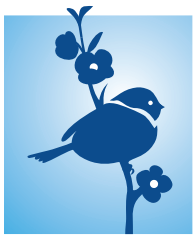
Suite	Tenant	SF
1725	Available	2,000
1729	DTLR	5,000
1733	H&R Block	2,000
1735	Available	1,495

Suite	Tenant	SF
1737	BJ's Market & Bakery	1,170
1741	Foot Locker	3,500
1747	Athletico	2,420
1753	Seashell Restaurants	1,815
1751	America's Best	2,765
Total GLA		159,785

Suite	Tenant	SF
1651	Bank of America (Sperately Owned)	6,450
1625	Burger King (Sperately Owned)	6,500

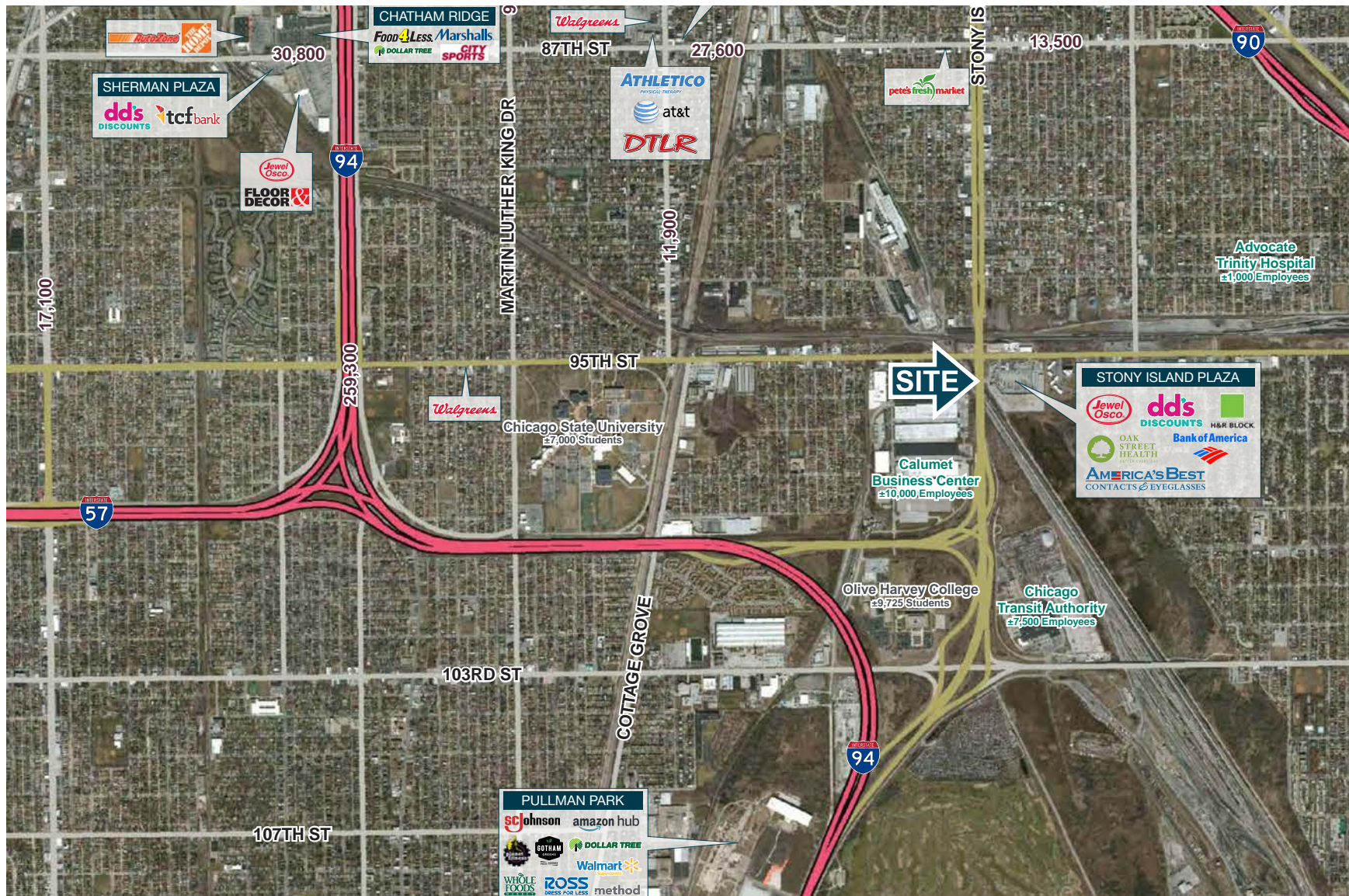
SITE PLAN



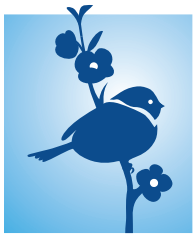


STONY ISLAND PLAZA

95TH ST & STONY ISLAND AVE



AREA MAP



STONY ISLAND PLAZA

95TH ST & STONY ISLAND AVE

Campbell Wickland

Mid-America Asset
Management, Inc.

T: 630.954.7236

F: 630.954.7304

CWickland@MidAmericaGrp.com

Liz Krebs

Mid-America Asset
Management, Inc.

T: 630.954.7362

F: 630.954.7304

LKrebs@MidAmericaGrp.com



MID-AMERICA®
Asset Management, Inc.

One Parkview Plaza, 9th Floor
Oakbrook Terrace, Illinois 60181
630.954.7300

MidAmericaGrp.com

Owned By:



NewMark Merrill
COMPANIES



CONTACT