

FOR LEASE

THE GRIFFIN BUILDING

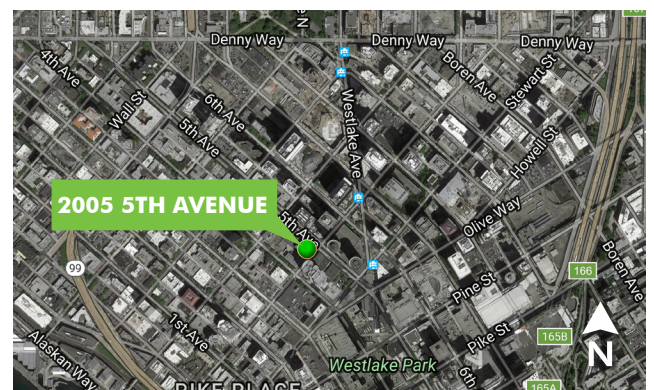
2005 5th Ave / Seattle, WA 98121



PROPERTY INFO

- + Beautifully restored 6,292 SF full floor office suite
- + \$28.00 fully serviced for lease terms agreed to by July 1st, 2020*
- + Rent ready
- + Huge windows flood the suite with natural light
- + New owners have refurbished the lobby
- + Comcast & Century Link WiFi

*Separate tenant contracts for janitorial & garbage



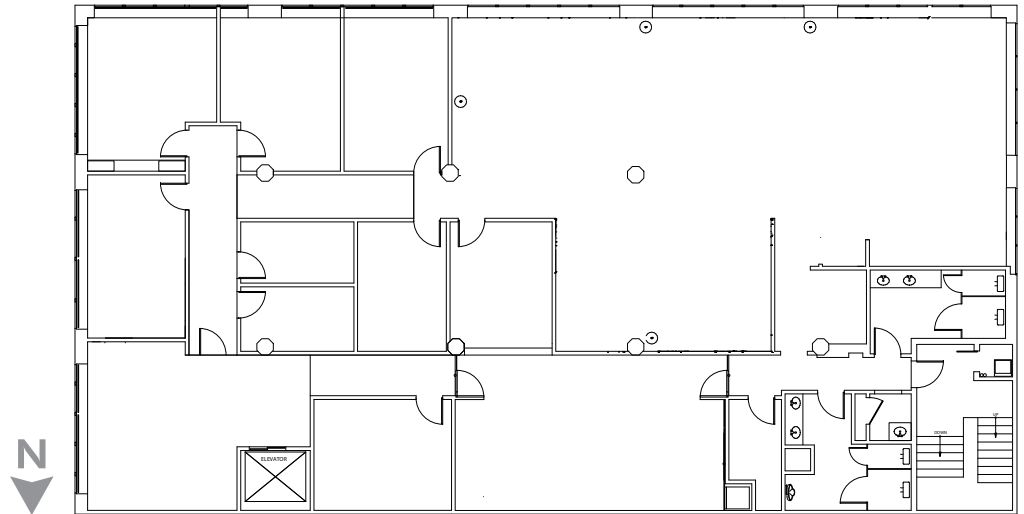
GRIFFIN BLDG

2005 5th Ave, Seattle, WA 98121

Floor 2 - 6,292 RSF

\$28.00 fully serviced*

*Separate tenant contracts for janitorial & garbage



PLEASE CONTACT:

SALLY PATTERSON

Vice President
+1 206 292 6142
sally.patterson@cbre.com

CBRE, INC.

1420 5th Ave
Suite 1700
Seattle, WA 98101

© 2020 CBRE, Inc. All rights reserved. This information has been obtained from sources believed reliable, but has not been verified for accuracy or completeness. You should conduct a careful, independent investigation of the property and verify all information. Any reliance on this information is solely at your own risk. CBRE and the CBRE logo are service marks of CBRE, Inc. All other marks displayed on this document are the property of their respective owners, and the use of such logos does not imply any affiliation with or endorsement of CBRE. Photos herein are the property of their respective owners. Use of these images without the express written consent of the owner is prohibited. 03182020 JS

www.cbre.us/seattle

CBRE