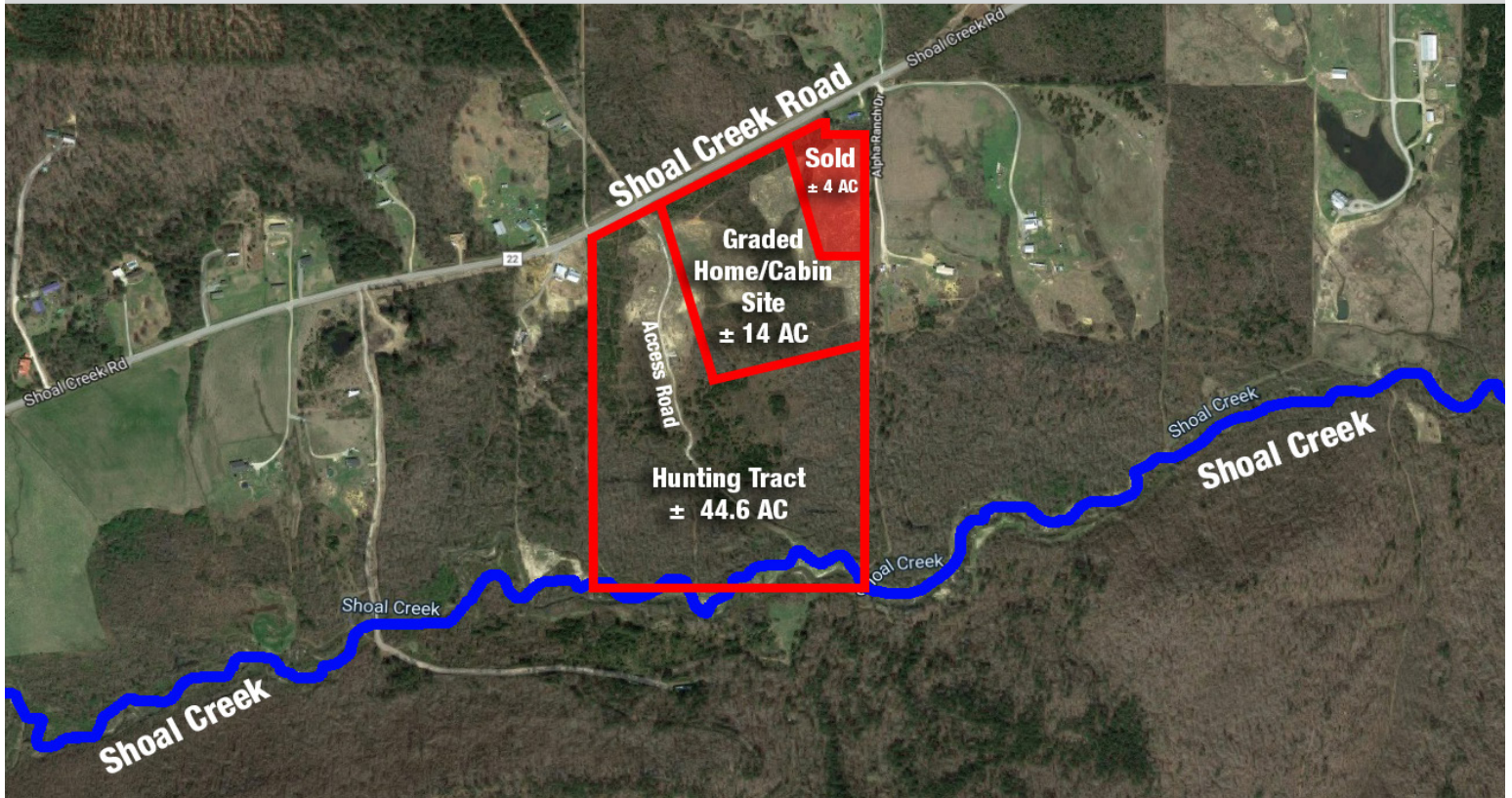




Recreational Land For Sale

Property Location: Shoal Creek Road, Ashville, Alabama 35022

GPS Coordinates: 33°47'32.4"N, 86°11'51.1"W



± 58 Acres with Great Hunting and Home Site!

Resting in Ashville, Alabama, this ± 58 acres offers the rare combination of 1,500 feet of road frontage on Shoal Creek Road and an opportunity to own a tract that offers hunting for deer and turkeys, Shoal Creek running through the property, and a good house/cabin site with access to water, power and sewer by the road.

Parcel ID: 11-07-26-0-000-004.002

BONUS: Access road from Highway to Shoal Creek!

Sale Price: \$293,050 (\$5,000/AC)

Lyndsy Yim - 205-482-1004 - yim@lahcommercial.com

Blake Greeves - 817-723-0342 - bgreeves@lahcommercial.com

LAH Commercial Real Estate, 2850 Cahaba Road, Suite 200, Birmingham, AL 35223 - Office: (205)870-8580 - Fax: (205)870-7348

© 2019 LAH Commercial Real Estate, LLC

Information deemed reliable, but subject to verification



Sale Price: \$293,050 (\$5,000/AC)

Lyndsy Yim - 205-482-1004 - yim@lahcommercial.com

Blake Greeves - 817-723-0342 - bgreeves@lahcommercial.com

LAH Commercial Real Estate, 2850 Cahaba Road, Suite 200, Birmingham, AL 35223 - Office: (205)870-8580 - Fax: (205)870-7348

© 2019 LAH Commercial Real Estate, LLC

Information deemed reliable, but subject to verification