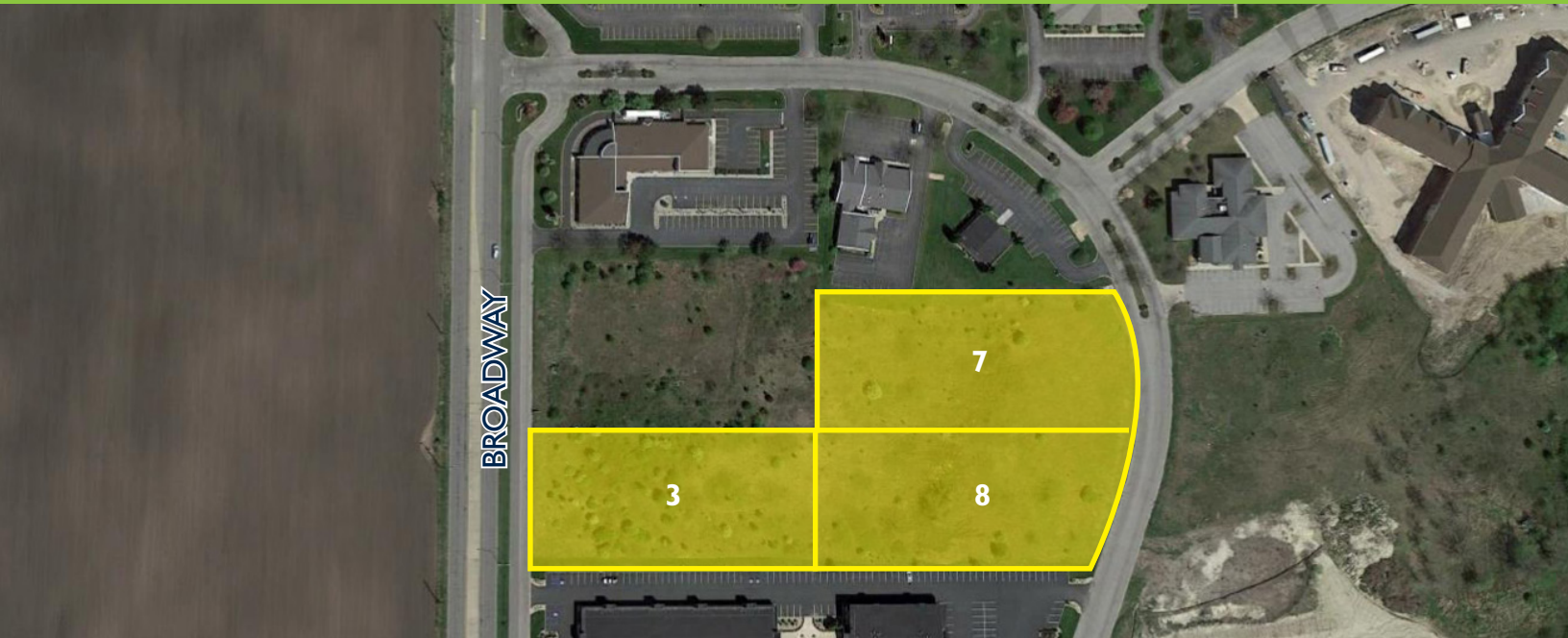


# MULTI-USE LAND

903 I BROADWAY, MERRILLVILLE, IN

## FOR SALE



### FEATURES:

- 3 parcels ranging from 1.64 to 5.3 acres combined
- Prime location for professional, medical, or retail space
- 200 FT of frontage on Broadway and 380 Ft on Connecticut
- Located just south of US 30 on the east side of Broadway
- In the shadow of Broadway Methodist Hospital
- C-3 zoning
- **FOR SALE: ~~\$750,000~~ \$695,000**
  - **Lot 3: \$380,000 (± 1.84 Acres)**
  - **Lot 7: \$175,000 (± 1.64 Acres)**
  - **Lot 8: \$195,000 (± 1.78 Acres)**

## PRICE REDUCTION



### FOR MORE INFORMATION:

Steve Nicksic  
Senior Broker  
219.508.0554  
snicksic@bradleyco.com

Ross Brown  
Senior Broker  
219.669.6090  
rbrown@bradleyco.com

Jim Nicksic  
Senior Broker  
219.743.3825  
jnicksic@bradleyco.com

©2018 Bradley Company, LLC and affiliates. Use of any third party name or mark is for informational purposes only and does not indicate sponsorship or endorsement by such party. Any property information presented above has been obtained from sources believed reliable. Not all information has been independently verified, and Bradley Company, LLC makes no guarantee, warranty or representation about its accuracy. Any projections, opinions, or estimates are for example only and do not necessarily represent the future performance of a property. Before completing a real estate transaction, you and your advisors should conduct an independent investigation of the property to determine its suitability for your needs.

