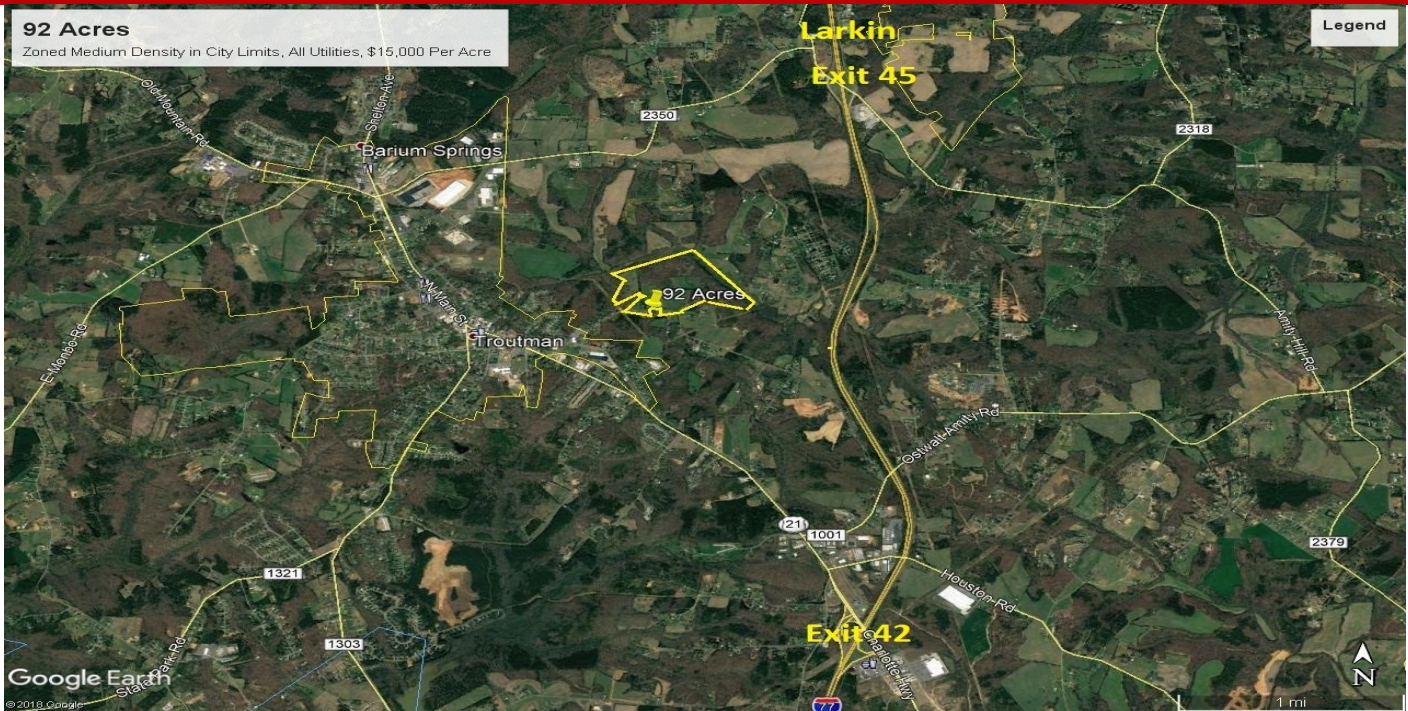


Ready for Community Developer

+/- 92 Acres, Zoned Medium Density, All Utilites. Inside City Limits

Troutman, NC 28166



**+/- 92 Acres Between Troutman and I-77 Exit 42 and 45.
IN CITY LIMITS, ALL UTILITIES, ZONED FOR MEDIUM DENISITY.
Very scenic property with pasture land and open areas and
patches of beautiful big hardwood trees. Ideal for
COMMUNITY BUILDER or large estate homes (OWNER WILL
DIVIDE), Quick access to I-77 at exits 42 or 45. 1420 Frontage
on Perry and Hoover Roads. \$15,000 Per Acre.**

For more information or to schedule a tour, please contact:

Frank Harmon

fharmon@equitycp.com

704-677.5320 Cell



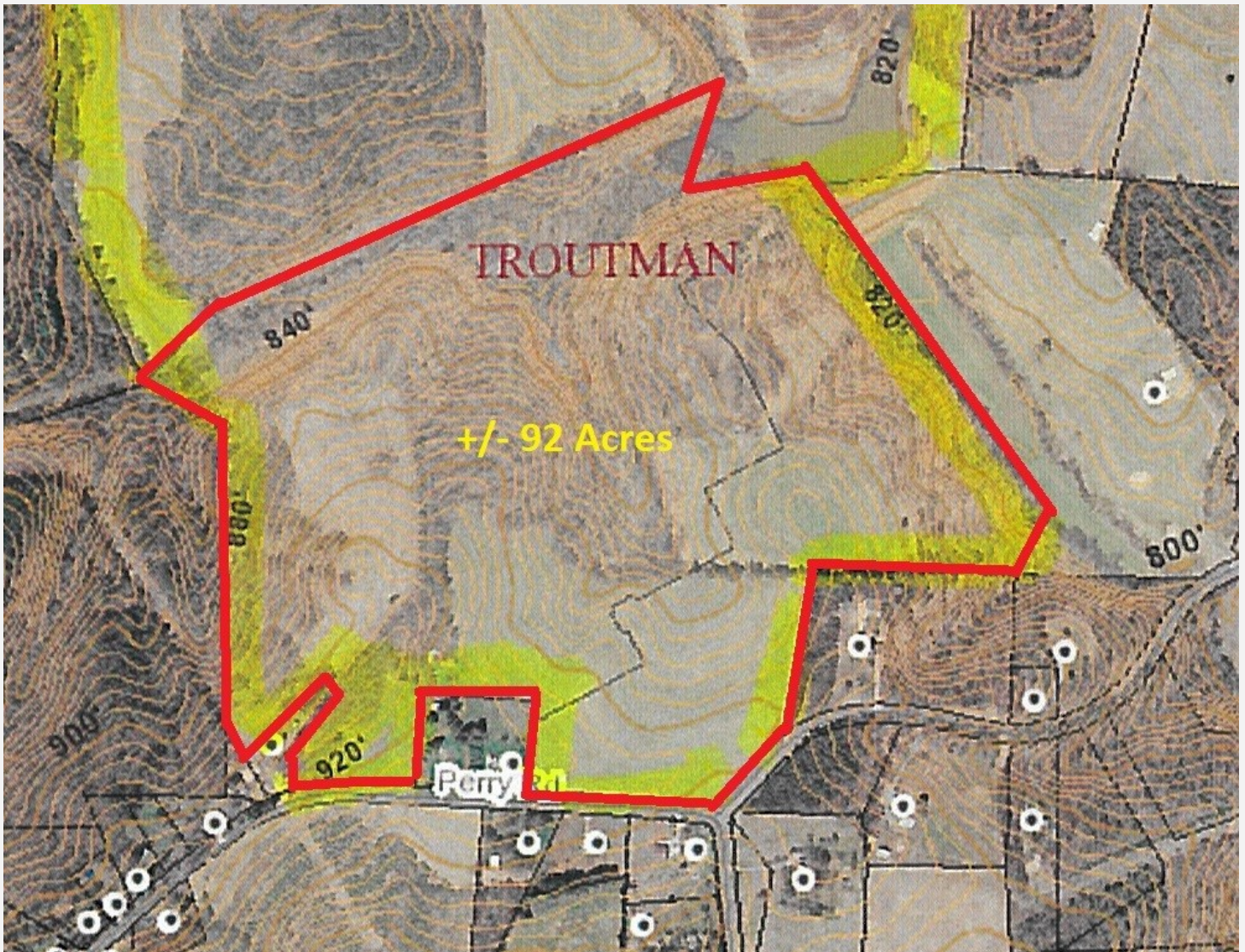
Equity Commercial Properties

114 Morlake Dr.
Suite 104
Mooresville, NC

Office 704-799-9202

EquityCP.com

Between Exit 45 Larkin & Exit 42 Troutman, I-77



STRATEGIC LOCATION



Equity Commercial Properties

114 Morlake Dr.
Suite 104
 Mooresville, NC

Office 704-799-9202
EquityCP.com