

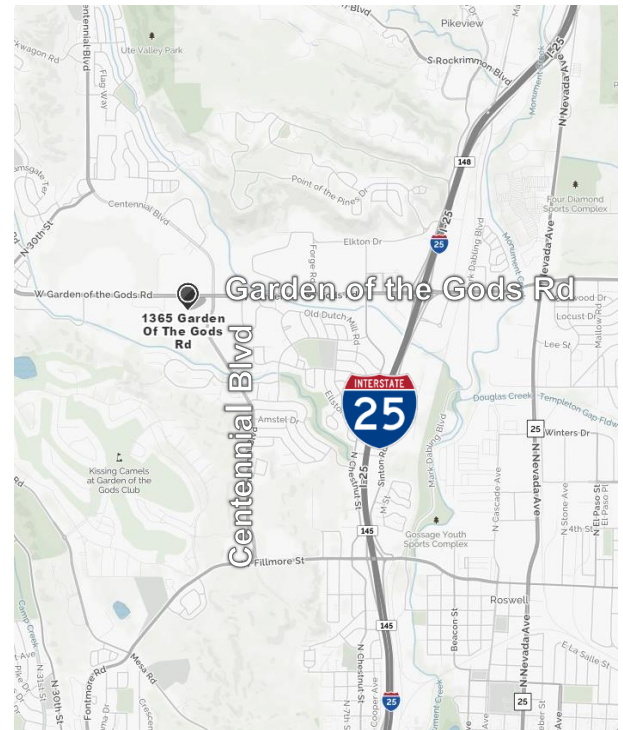


**PRESIDIO**  
 Property Trust  
 formerly NetREIT

**GARDEN GATEWAY PLAZA**



<b>BUILDING SIZE</b>	64,122 RSF
<b>SALE PRICE</b>	Call broker for details
<b>AVAILABLE SPACE</b>	<p><b>1<sup>st</sup> Floor:</b></p> <p>Suite 105            5,017 RSF</p> <p>Suite 110A          7,233 RSF</p> <p>Suite 110B          <u>5,833 RSF</u></p> <p><b>18,083 RSF</b></p> <p>Suite 130            2,098 RSF</p> <p><b>2<sup>nd</sup> Floor:</b></p> <p>Suite 280            7,034 RSF</p>
<b>LEASE RATE</b>	From \$12.50 per RSF NNN
<b>EXPENSES</b>	\$6.35 per RSF (2019 estimate)
<b>TENANT IMPROVEMENTS</b>	Negotiable
<b>PARKING</b>	Up to 5 spaces per 1,000 RSF
<b>RU FACTOR</b>	1.172
<b>YEAR CONSTRUCTED</b>	1982 – completely renovated in 2002



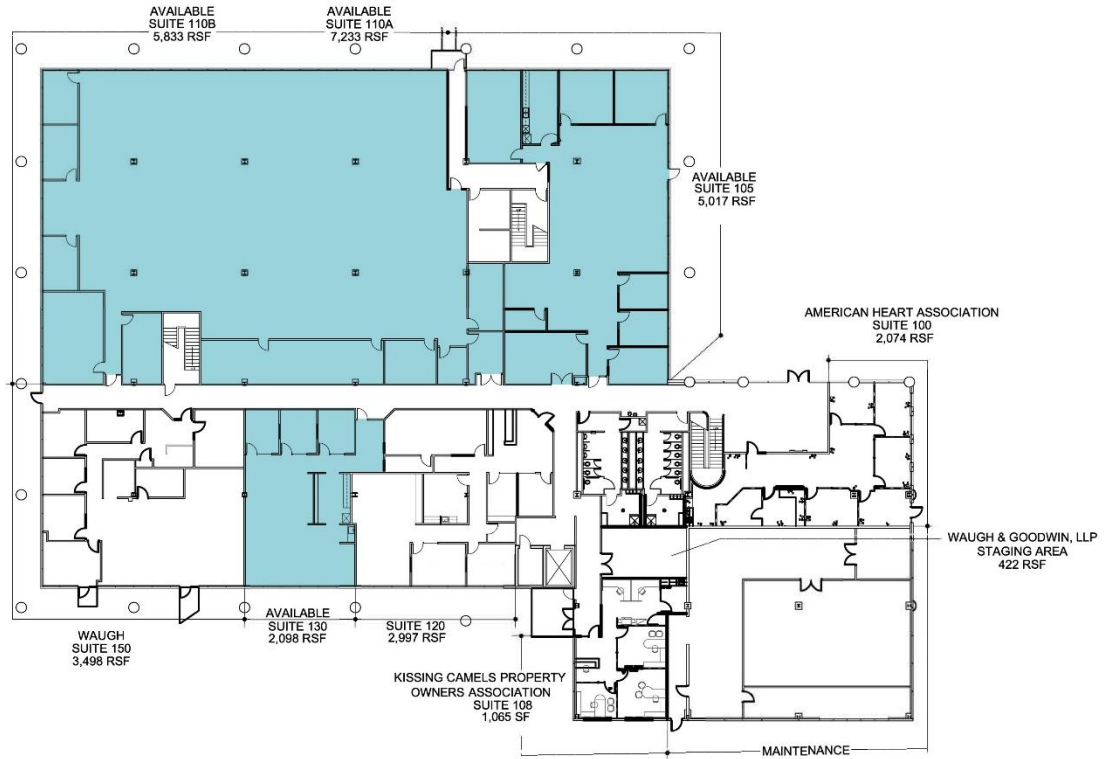
For more information, please contact:

**Greg Phaneuf**  
 Principal  
 +1 719 418 4064  
 gphaneuf@coscommercial.com

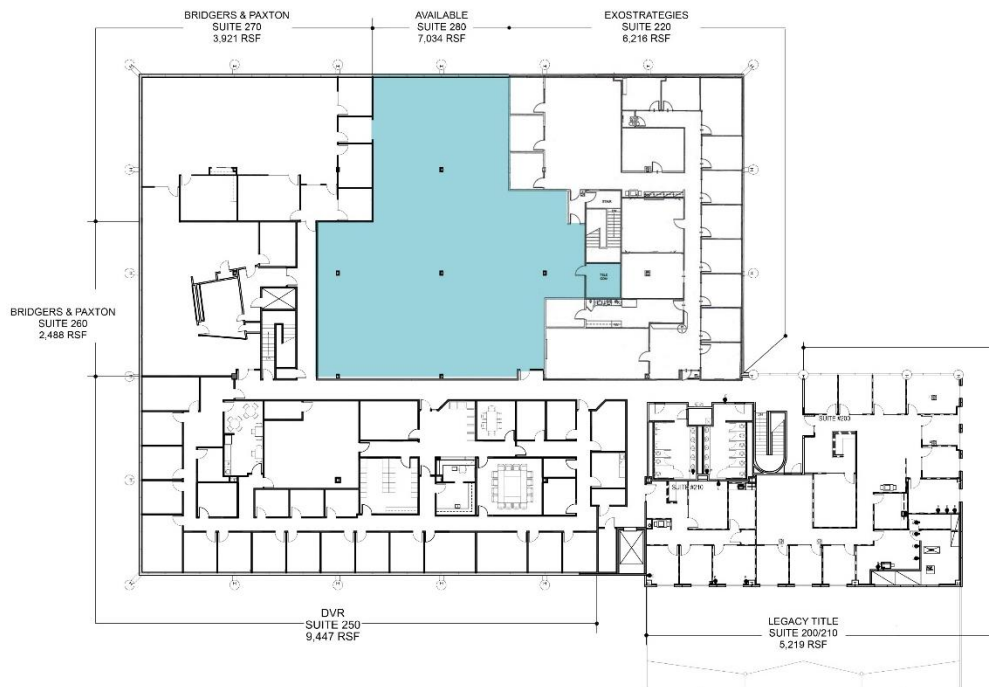
**Peter Scoville**  
 Principal  
 +1 719 418 4063  
 pscoville@coscommercial.com

2 North Cascade Avenue, Suite 720  
 Colorado Springs, CO 80903  
 phone: +1 719 634 1500  
 coscommercial.com

**1st Floor**



**2nd Floor**



For more information, please contact:

**Greg Phaneuf**  
**Principal**  
 +1 719 418 4064  
 gphaneuf@coscommercial.com

**Peter Scoville**  
**Principal**  
 +1 719 418 4063  
 pscoville@coscommercial.com

2 North Cascade Avenue, Suite 720  
 Colorado Springs, CO 80903  
 phone: +1 719 634 1500  
 coscommercial.com