

WOODLAND OFFICE PARK

1536 – 1544 North Woodland Park Boulevard, Layton, Utah 84041



FOR LEASE

\$13.00/SF NNN

PROPERTY FEATURES

- Building 1536 Suite 230: 4,268 SF Available
- Building 1544 Suite 320: 2,786 SF Available
- Located Just North of Layton Hills Mall
- Centrally Located Between Ogden and Salt Lake City
- Many Nearby Amenities
- 82 Parking Stalls

FOR MORE
INFORMATION
CONTACT

CHRIS FALK, CCIM, SIOR
801.416.1024
chris.falk@ngkf.com

BRAXTON WILLIE, CCIM
801.416.1050
braxton.willie@ngkf.com

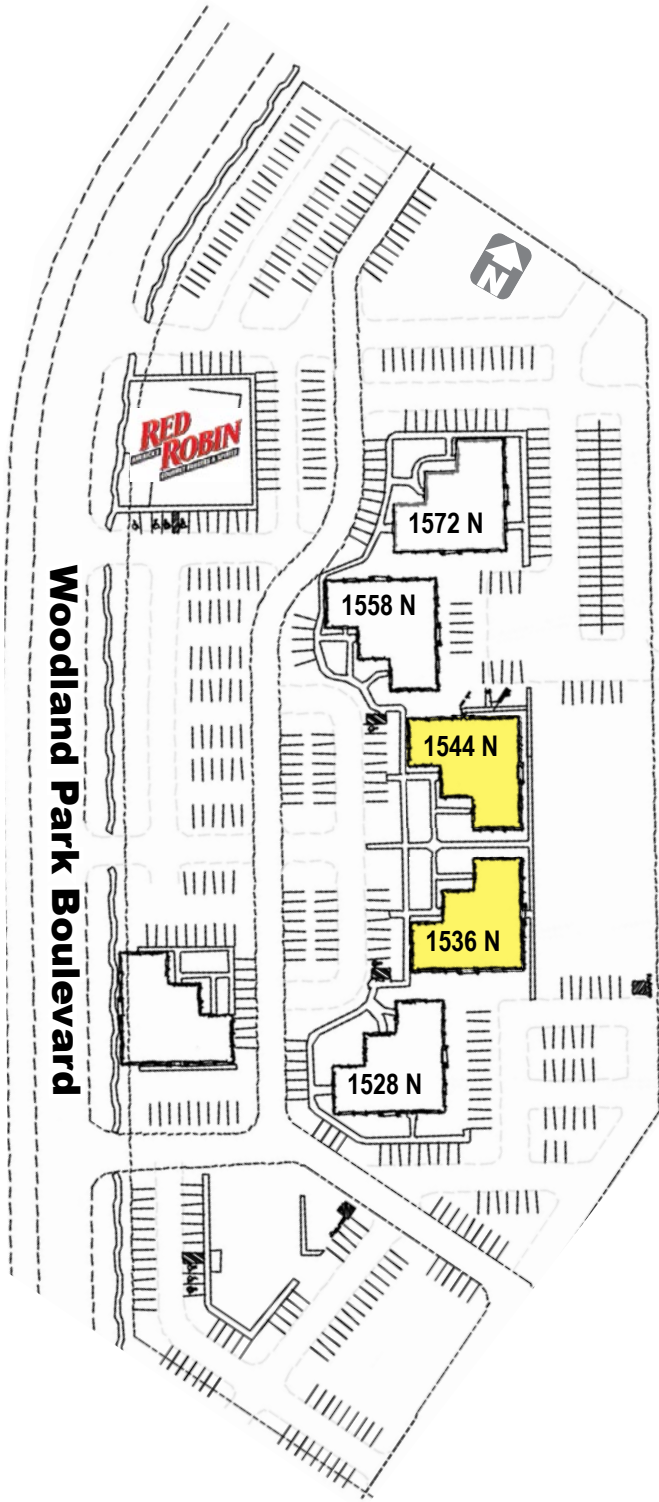


1755 East 1450 South, Suite 100 | Clearfield, Utah 84015 | 801.927.2000 | www.ngacres.com

This document has been prepared by Newmark Knight Frank for advertising and general information purposes only. While the information contained herein has been obtained from what are believed to be reliable sources, the same has not been verified for accuracy or completeness. Newmark Knight Frank accepts no responsibility or liability for the information contained in this document. Any interested party should conduct an independent investigation to verify the information contained herein.

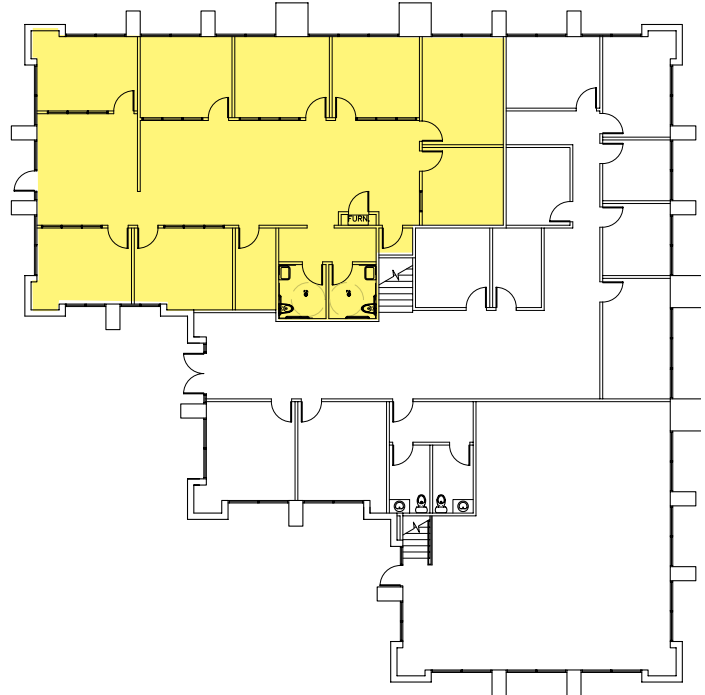
WOODLAND OFFICE PARK

1536 – 1544 North Woodland Park Boulevard, Layton, Utah 84041



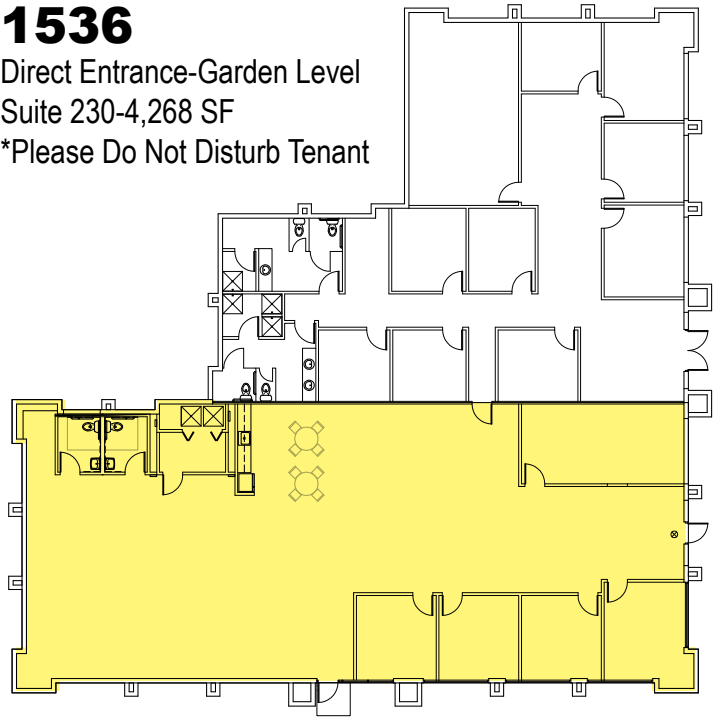
1544

Direct Entrance
Suite 320 - 2,786 SF



1536

Direct Entrance-Garden Level
Suite 230-4,268 SF
*Please Do Not Disturb Tenant



WOODLAND OFFICE PARK

1536 – 1544 North Woodland Park Boulevard, Layton, Utah 84041

