

# DOWNTOWN OFFICE SPACE FOR LEASE



**900 WALNUT STREET**  
ST. LOUIS, MO | 63102

LEASED BY:

**NEWMARK**

ZIMMER

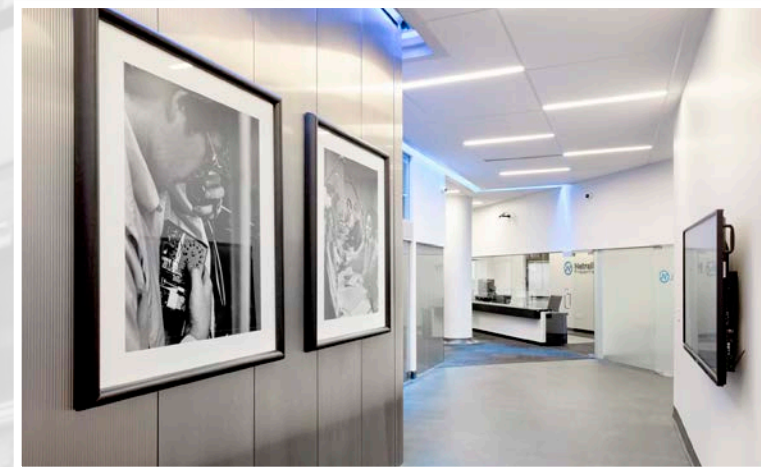
**New to  
the Market**

**Located Within  
an Opportunity  
Zone**



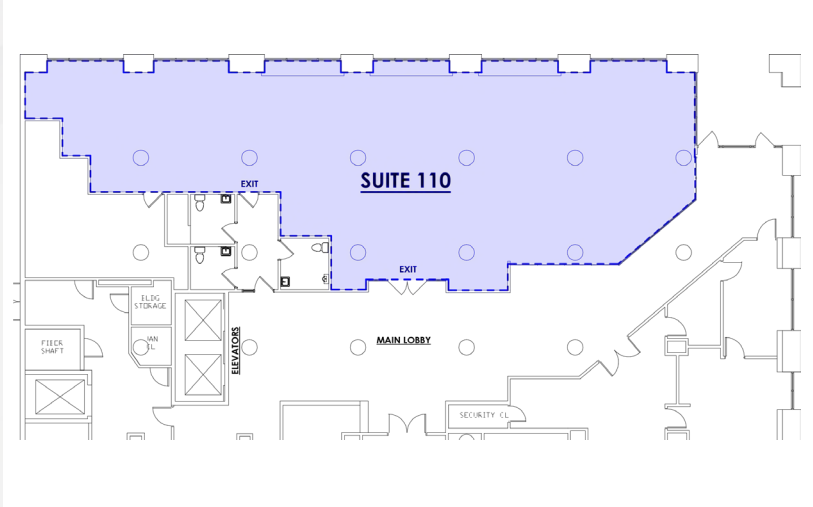
## PROPERTY HIGHLIGHTS:

- Office space within a premier data center property
- 3,403 RSF - 8,663 RSF available
- Building Amenities
  - Large bandwidth capabilities from more than 38 providers
  - Ample parking directly across the street at Stadium West
  - 5,000 kW backup generator
  - Key card access throughout the entire facility
  - Secure storage space available
- **Lease Rate: \$19.00/RSF, full service**

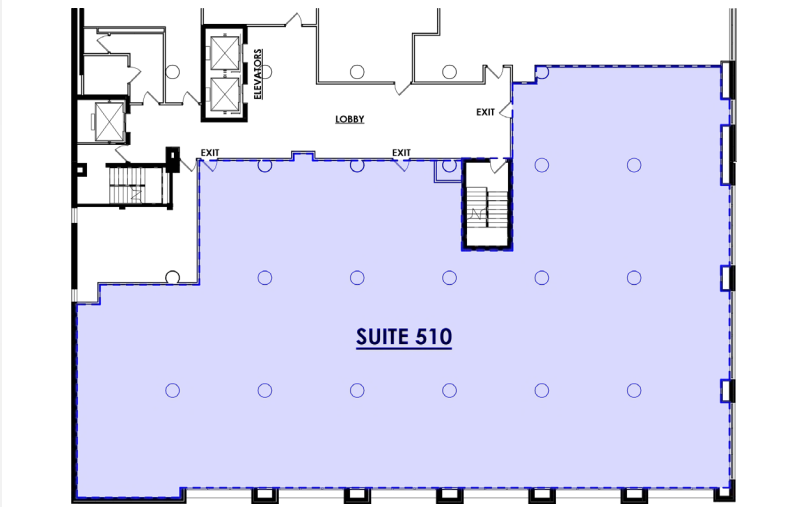


# CURRENT AVAILABILITIES:

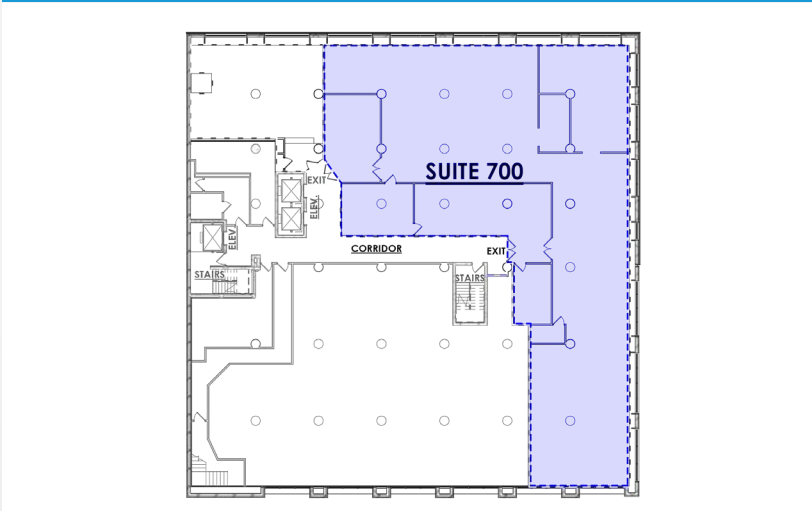
**SUITE 110: 3,403 RSF AVAILABLE**



**SUITE 510: 8,663 RSF AVAILABLE**



**SUITE 700: 8,462 RSF AVAILABLE**







For further information, please contact:

**KEVIN McLAUGHLIN, SIOR**  
*Executive Managing Director, Principal*  
 314.628.0436  
 kmclaughlin@ngzimmer.com

**JAY TRAVIS**  
*Associate*  
 314.628.0442  
 jtravis@ngzimmer.com

LEASED BY:  
**NEWMARK**  
 ZIMMER