

Riverfront Marketplace

New Leasing Opportunity!

Rivertown Marketplace is an opportunity for boutique business to lease small spaces not available anywhere else. This unique opportunity is in Historic Rivertown on the most prime corner.



(Marketplace View)



(Floor Plan)

Marketplace Features:

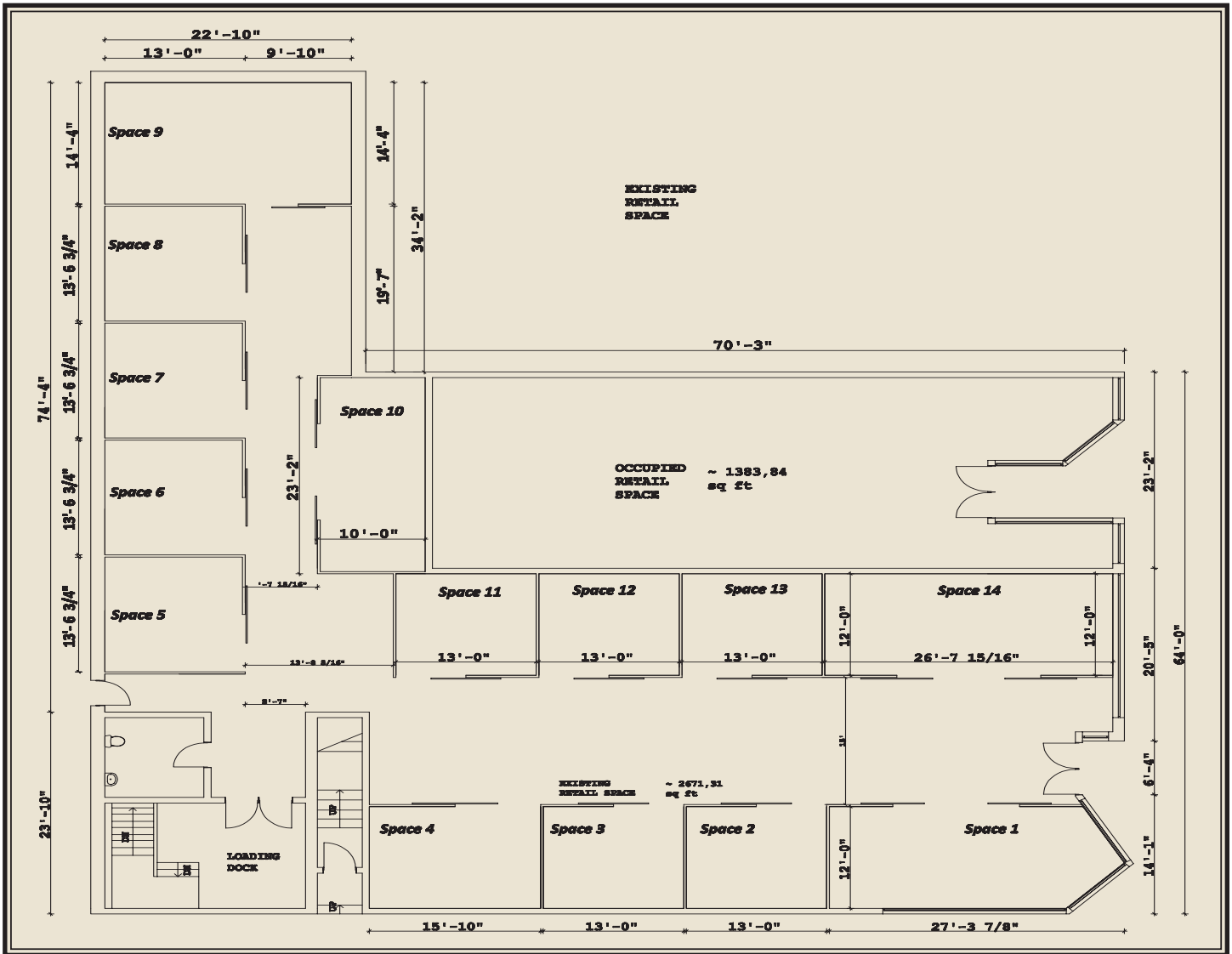
- Opportunity to open a retail boutique as small as 293 square feet
- Individual secure store fronts with sliding redwood door
- Amazing refinished 119 year old hardwood floors
- On the northeast corner of G St. and 2nd St. right in the heart of Downtown Antioch
- 1 block from future High Speed Ferry to San Francisco
- An opportunity to become a part of the exciting new River Town Business District redevelopment
- Walking distance to the Amtrak Station
- Opportunity to be a staple in the revitalized community
- Recently updated HVAC in all spaces

FOR MORE INFORMATION ON THIS PROPERTY, PLEASE CONTACT:

Will Beaubien
Beaubien Investment Group
One Market Street, Spear Tower, Ste. 3600
San Francisco, CA 94105
Direct: (415) 315-9392
email: will@beaubieninvestmentgroup.com
www.beaubieninvestmentgroup.com



BEAUBIEN
INVESTMENT GROUP
BeaubienInvestmentGroup.com



Space	Suggested Use	Width	Depth	Rentable Square Feet	Monthly Rent	\$/sqft
1	Coffee Shop	27'-37/8"	12'	616	\$924.51	\$1.50
2	Boutique Space	13'	12'	293	\$398.86	\$1.36
3	Boutique Space	13'	12'	293	\$395.93	\$1.35
4	Boutique Space	15'-10"	12'	357	\$482.11	\$1.35
5	Boutique Space	13'-63/4"	13'	331	\$447.40	\$1.35
6	Boutique Space	13'-63/4"	13'	331	\$447.40	\$1.35
7	Boutique Space	13'-63/4"	13'	331	\$447.40	\$1.35
8	Boutique Space	13'-63/4"	13'	331	\$447.40	\$1.35
9	Winery Tasting Room	22'-10"	14'-4"	612	\$886.85	\$1.45
10	Winery Tasting Room	23'-2"	10'	436	\$631.62	\$1.45
11	Boutique Space	13'	12'	293	\$395.93	\$1.35
12	Boutique Space	13'	12'	293	\$395.93	\$1.35
13	Boutique Space	13'	12'	293	\$395.93	\$1.35
14	Ice Cream & Yogurt Shop	26'-715/16"	12'	601	\$902.18	\$1.50
				5,414	\$17,599.45	\$11.40
'Includes pro tala share of Common Area						

All leases are full service inclusive of all utilities and common area expenses. Lease terms are a minimum of four months. Upon approval of credit, one months rent and a security deposit of equal amount moves you in. All interior walls will be delivered open allowing for individual requirements. All interior work is at the tenants expense and must be approved by the landlord.

FOR MORE INFORMATION ON THIS PROPERTY, PLEASE CONTACT:

Will Beaubien

Beaubien Investment Group
 One Market Street, Spear Tower, Ste. 3600
 San Francisco, CA 94105
 Direct: (415) 315-9392

email: will@beaubieninvestmentgroup.com · www.beaubieninvestmentgroup.com

