



Horizon Corporate Center

1000 Crawford Place, Mount Laurel, NJ

Property Description

Only two suites left for lease within four-story, 39,445 SF Class 'A' office building. Take advantage of this incredible rate to lock up a long-term lease at one of the area's premier addresses!

- Abundant window line with views of Philadelphia skyline
- Lake view setting
- Granite lobbies
- Elevator served
- Ample parking
- Built in 1987
- Wet sprinkler system
- Kastle Security System

Current Availabilities

Suite 220

1,938 RSF

LEASE RATE

\$19.00/SF

+ ELECTRIC & JANITORIAL

For more information:

Rebecca Ting, SIOR

+1 856 234 9600 • rebecca.ting@naimertz.com

Julie Kronfeld, SIOR

+1 856 802 6516 • julie.kronfeld@naimertz.com

NO WARRANTY OR REPRESENTATION, EXPRESS OR IMPLIED, IS MADE AS TO THE ACCURACY OF THE INFORMATION CONTAINED HEREIN, AND THE SAME IS SUBMITTED SUBJECT TO ERRORS, OMISSIONS, CHANGE OF PRICE, RENTAL OR OTHER CONDITIONS, PRIOR SALE, LEASE OR FINANCING, OR WITHDRAWAL WITHOUT NOTICE, AND OF ANY SPECIAL LISTING CONDITIONS IMPOSED BY OUR PRINCIPALS NO WARRANTIES OR REPRESENTATIONS ARE MADE AS TO THE CONDITION OF THE PROPERTY OR ANY HAZARDS CONTAINED THEREIN ARE ANY TO BE IMPLIED.

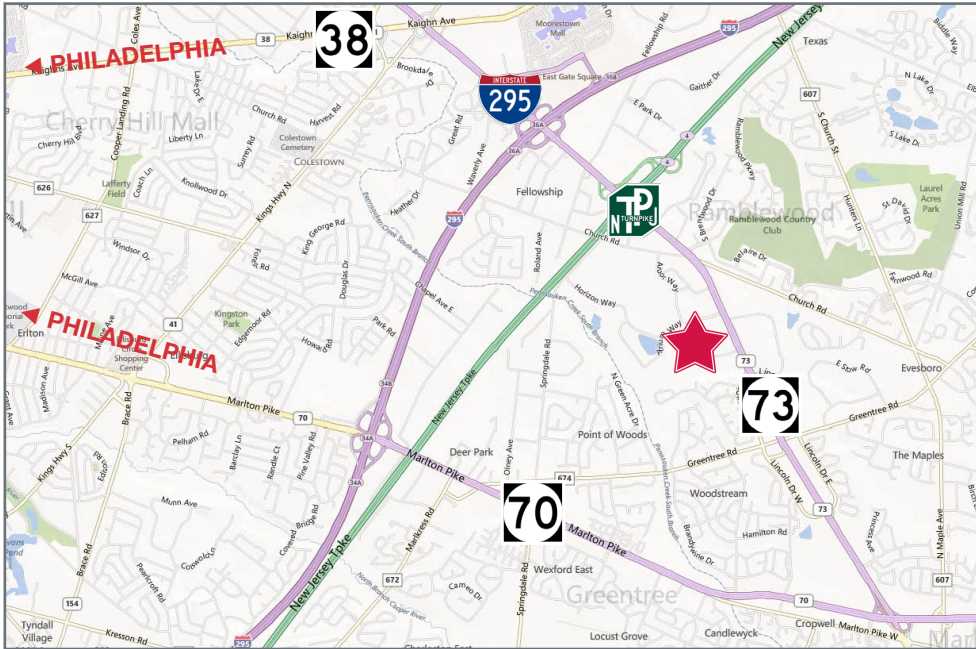
21 Roland Avenue
Mount Laurel, NJ 08054

+1 856 234 9600

naimertz.com

Location

1000 Crawford Place, Mount Laurel, NJ



Location Information

- Located just off Route 73 in Horizon Corporate Center
- Minutes from NJ Turnpike (Exit 4), I-295 (Exit 34) and Routes 38 & 70
- Within 25 minutes of Center City Philadelphia and Philadelphia International Airport

The Horizon Corporate Center has numerous amenities in its immediate area including:

Lodging



Dining



Shopping & Services



Distance to Other Nearby Amenities:

Moorestown Mall	3.0 mi
The Promenade at Sagemore	3.7 mi
Cherry Hill Mall	5.5 mi
Centreton Square	6.0 mi
Center City Philadelphia	14.0 mi
Philadelphia Airport	25.0 mi
Atlantic City Airport	45.0 mi

For more information:

Rebecca Ting, SIOR
 +1 856 234 9600
 rebecca.ting@naimertz.com

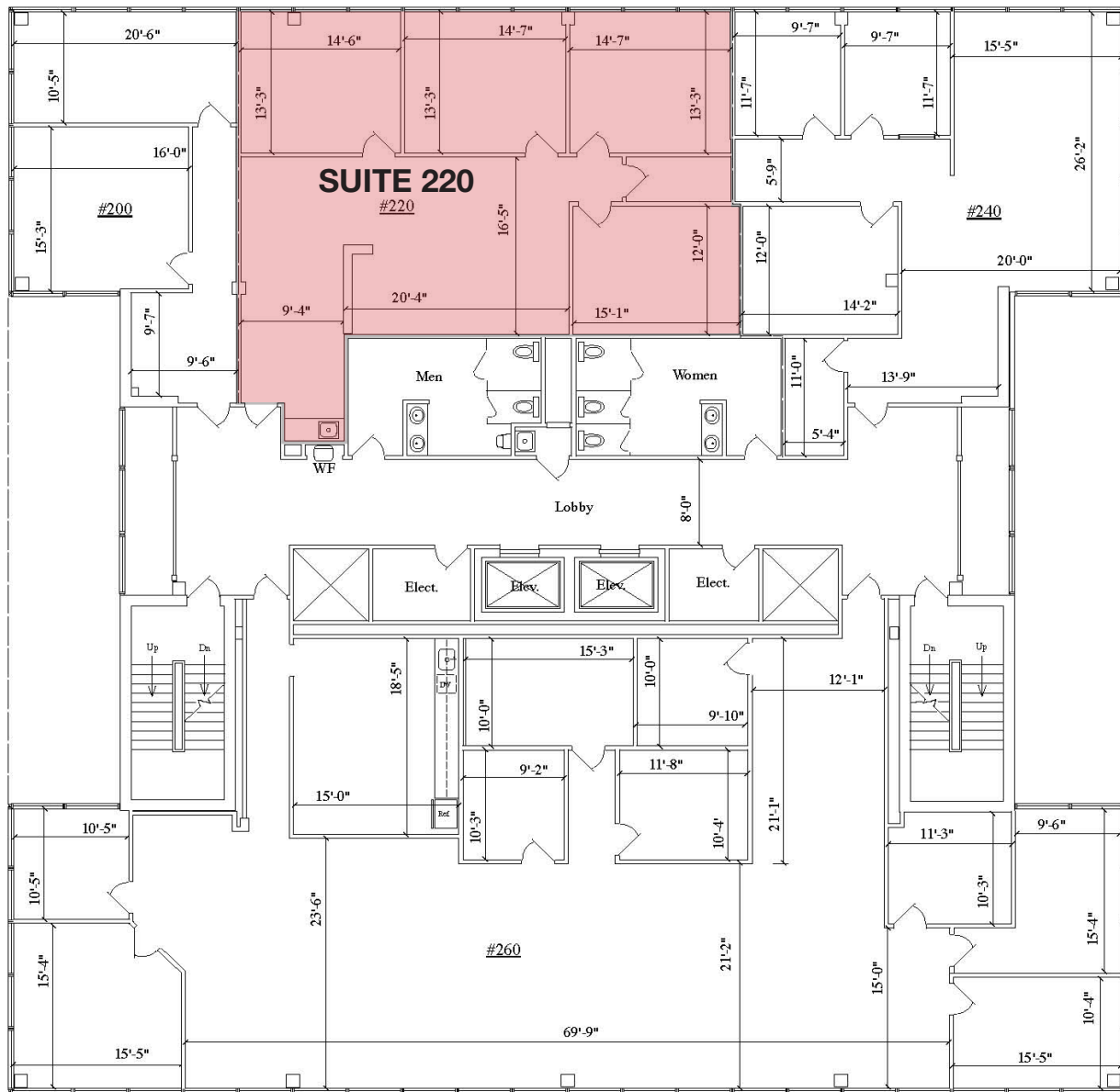
Julie Kronfeld, SIOR
 +1 856 802 6516
 julie.kronfeld@naimertz.com



21 Roland Avenue
 Mount Laurel, New Jersey
 +1 856 234 9600
naimertz.com

Floorplan - Second Floor

1000 Crawford Place, Mount Laurel, NJ



For more information:

Rebecca Ting, SIOR
+1 856 234 9600
rebecca.ting@naimertz.com

Julie Kronfeld, SIOR
+1 856 802 6516
julie.kronfeld@naimertz.com