

Ogden Marketplace

Middle Sound Loop Road & Market Street
Wilmington, NC 28411

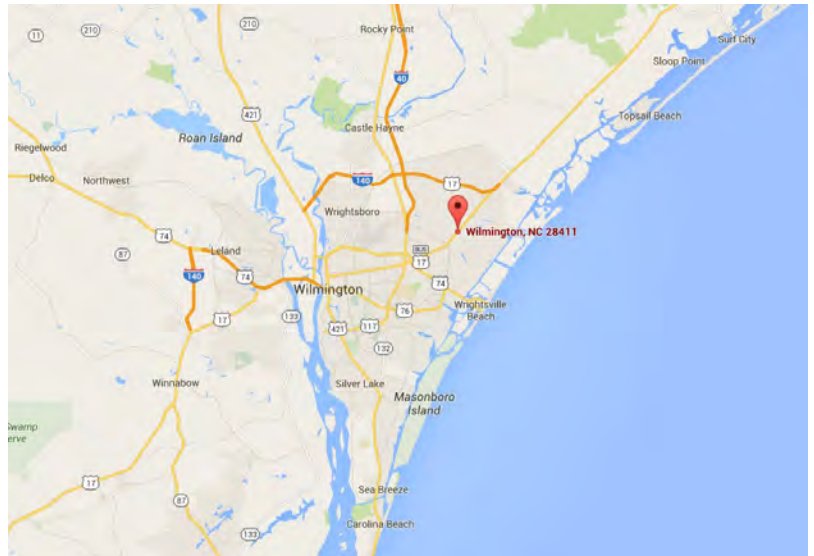


PROPERTY HIGHLIGHTS:

- Gourmet grocery store anchored center
- Approximately 72,000 SF of leasable space
- Great visibility from US 17 Business/Market Street
- Located on the “going home” side of US 17 Business
- Easy ingress/egress with four access points and a signalized intersection

TRAFFIC COUNTS:

- US 17 Business/Market Street - 46,898 VPD
- Middle Sound Loop Road - 9,058 VPD



DEMOGRAPHICS (2018):	5 Minute Drive	10 Minute Drive	15 Minute Drive
Population:	17,064	64,832	125,556
Average HH Income:	\$84,143	\$83,329	\$77,342
Daytime Population:	7,811	39,600	68,717

OWNED BY



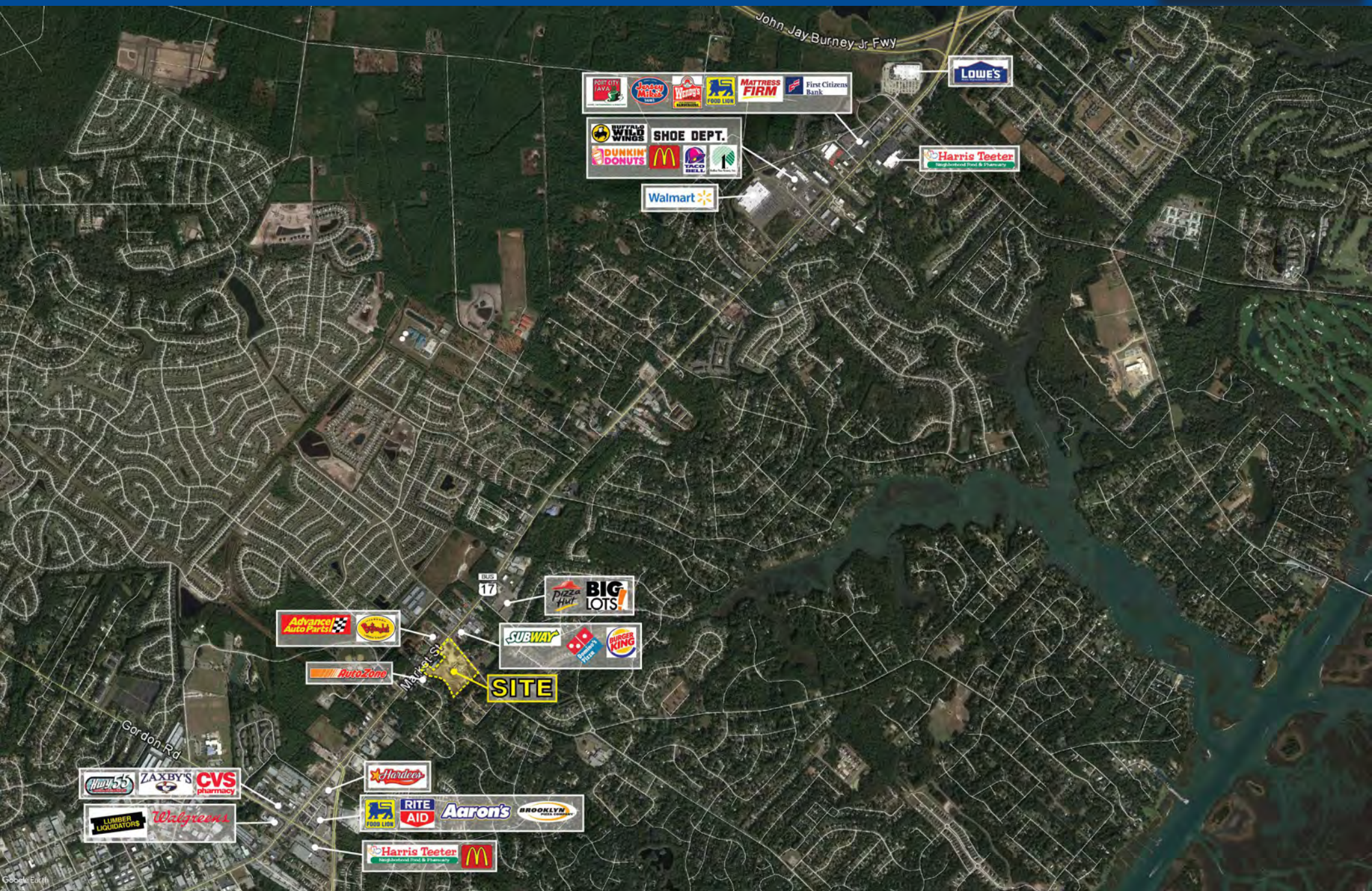
FOR MORE INFORMATION CONTACT:

Rianne Bell
(704) 529-6720 ext. 302
rianne@bellmooregroup.com

*No warranty or representation, expressed or implied, is made as to the accuracy of the information contained herein, and same is submitted subject to errors, omissions, change of price, rental or other conditions, withdrawal without notice, and to any special listing conditions imposed by our principals.

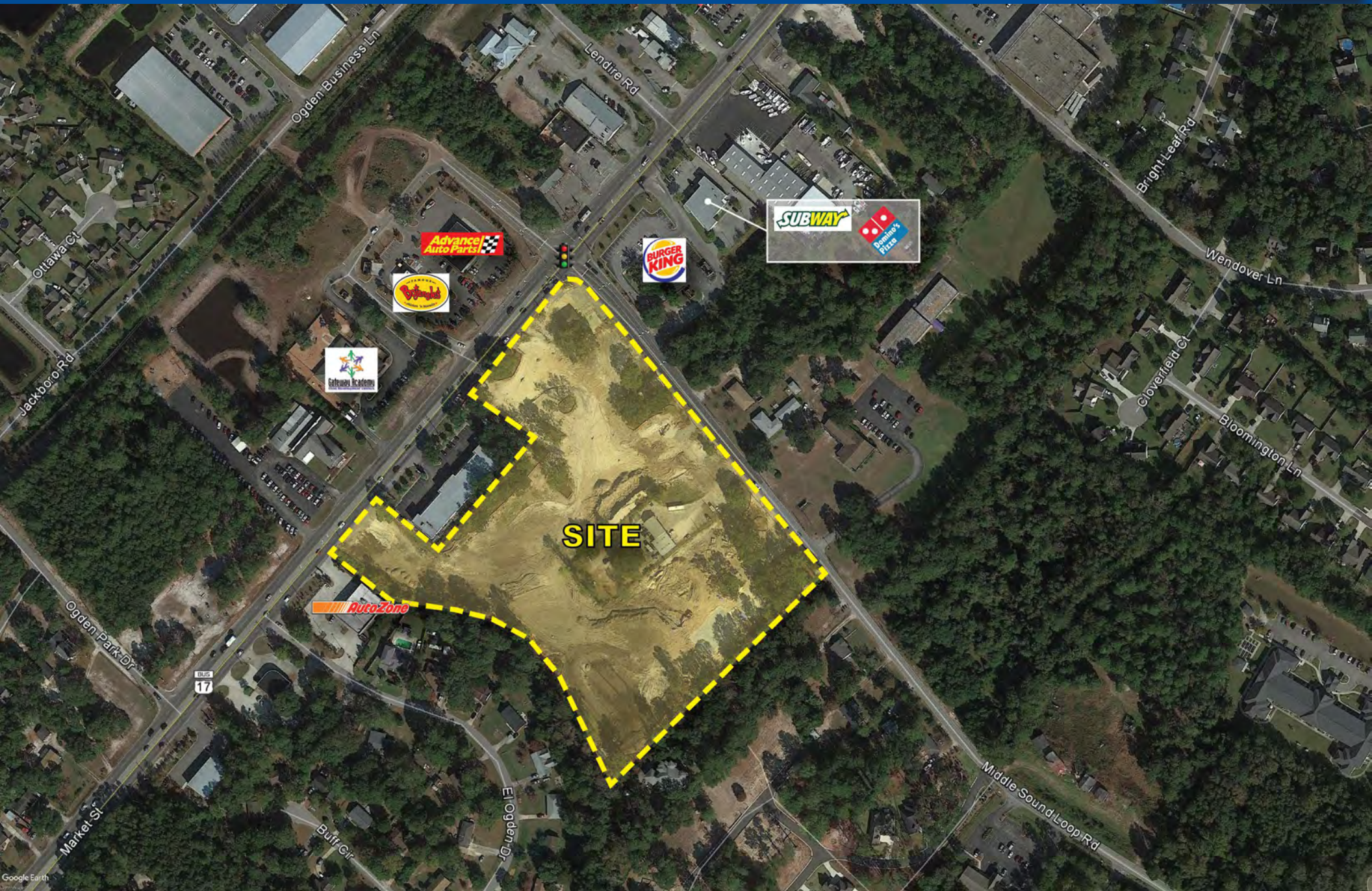
Ogden Marketplace

Middle Sound Loop Road & Market Street
Wilmington, NC 28411



Ogden Marketplace

Middle Sound Loop Road & Market Street
Wilmington, NC 28411

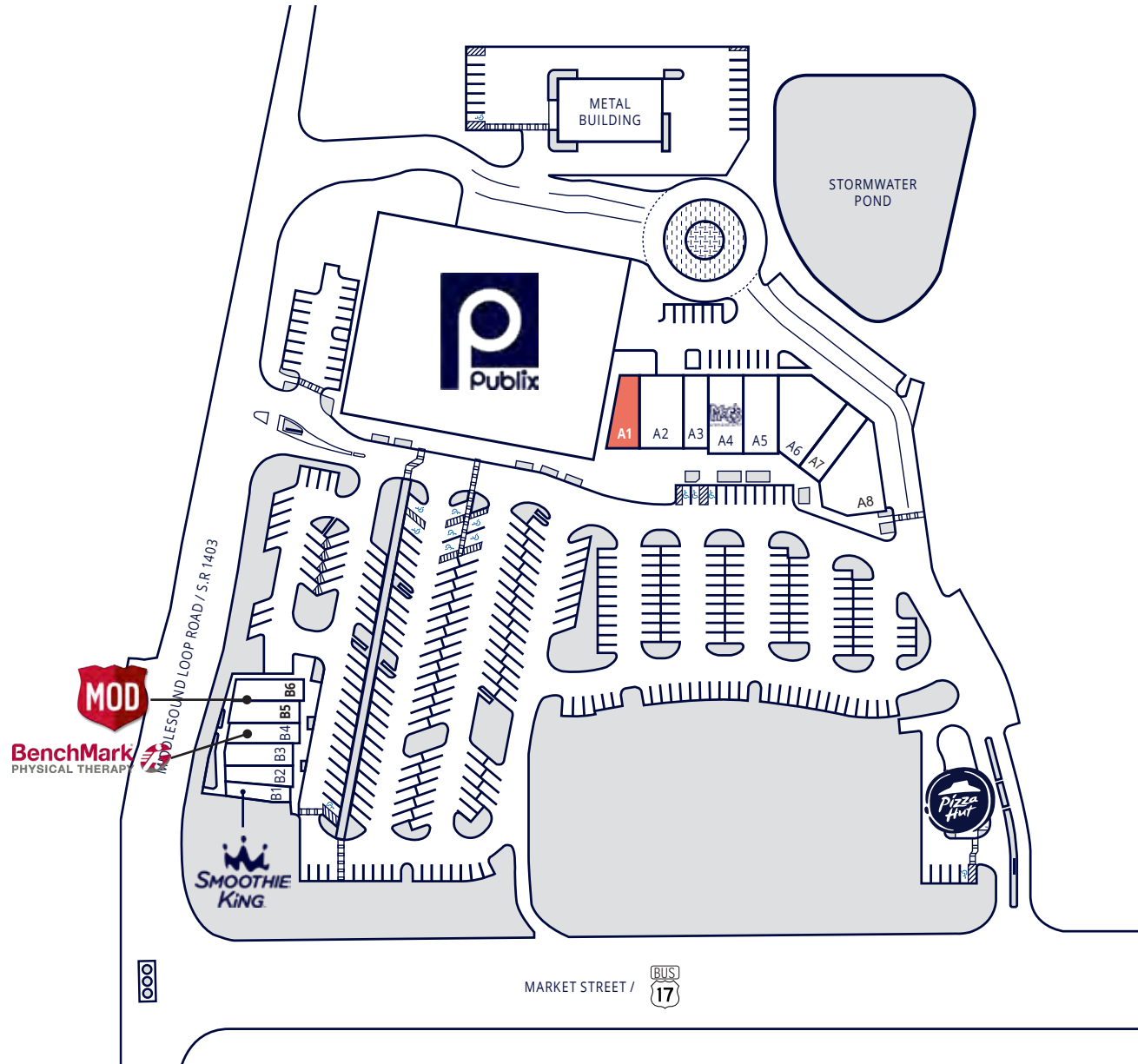


Ogden Marketplace

Middle Sound Loop Road & Market Street
Wilmington, NC 28411



Space #	Tenant	Size (SF)
Anchor	Publix	45,600 SF
A1	AVAILABLE	1,805 SF
A2	Nail Salon	2,784 SF
A3	9Round Fitness	1,651 SF
A4	Moe's Southwest Grill	2,500 SF
A5	The Fairy Circle	2,318 SF
A6	Double Happiness	3,551 SF
A7	Phenix Salon Suites	1,917 SF
A8	Phenix Salon Suites	3,508 SF
B1	Smoothie King	1,036 SF
B2	O2 Dental Group	1,033 SF
B3	O2 Dental Group	1,327 SF
B4	Benchmark Physical Therapy	1,306 SF
B5	MOD Pizza	1,370 SF
B6	MOD Pizza	1,327 SF
C1	Pizza Hut	1,400 SF



Ogden Marketplace

Middle Sound Loop Road & Market Street
Wilmington, NC 28411

