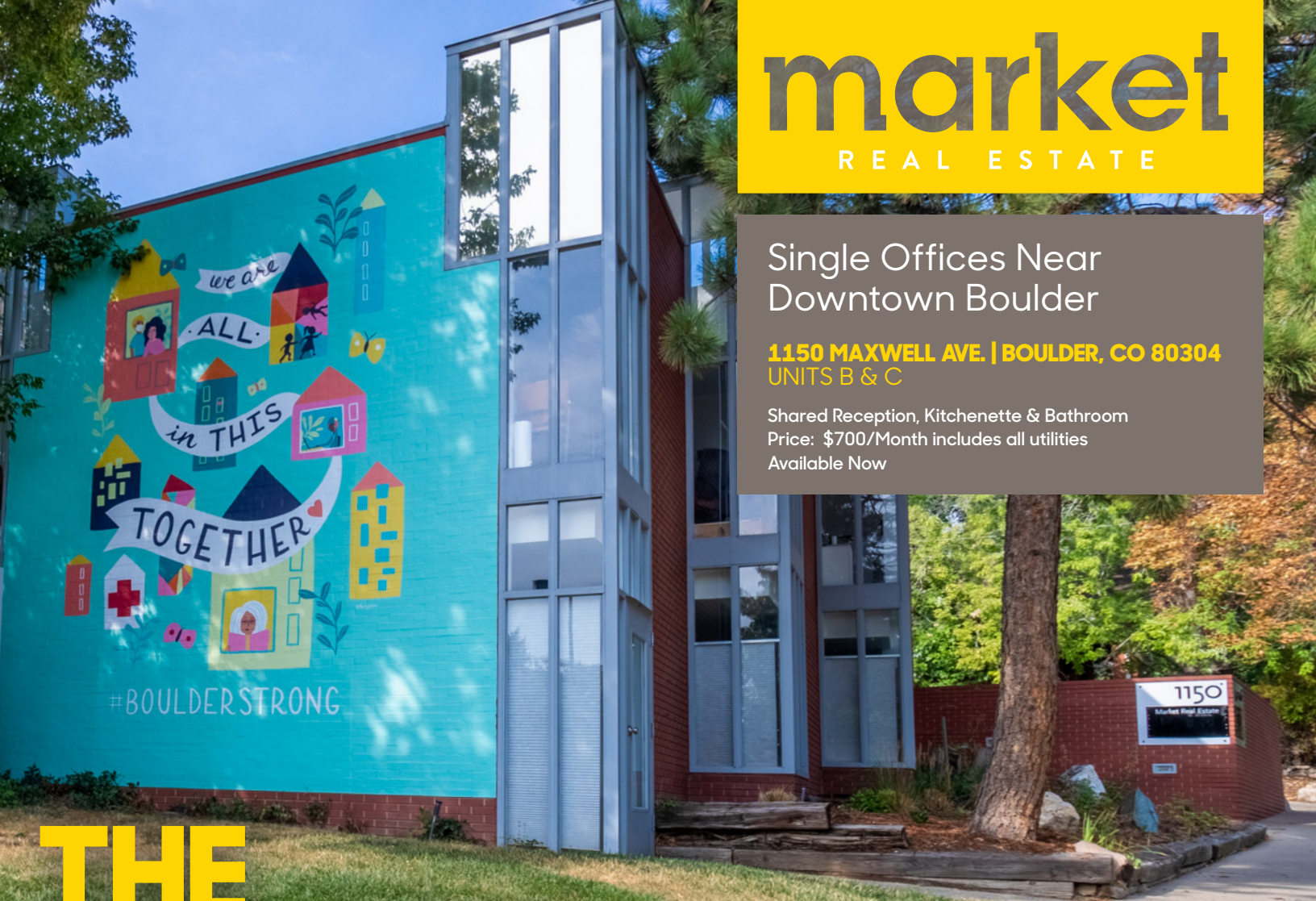


Single Offices Near Downtown Boulder

1150 MAXWELL AVE. | BOULDER, CO 80304
UNITS B & C

Shared Reception, Kitchenette & Bathroom
Price: \$700/Month includes all utilities
Available Now



THE SINGLE LIFE

Single offices available for lease in a bright and charming building at the corner of Maxwell and Broadway near downtown Boulder. Offices share a common waiting area and kitchenette. Building offers easy access to downtown, Broadway, and on-site parking.

PROPERTY HIGHLIGHTS

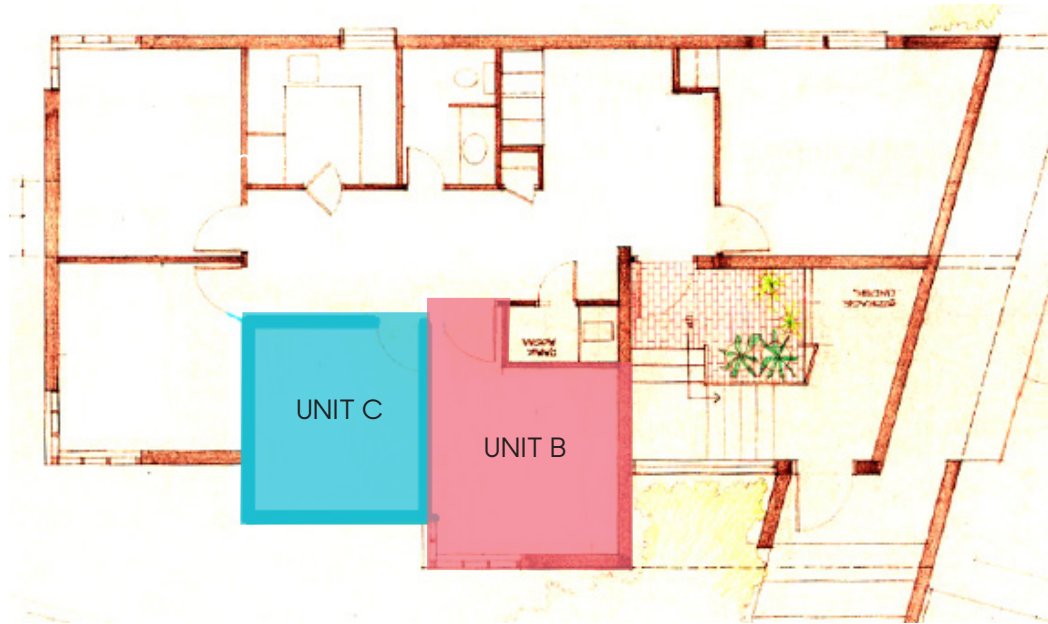
- Free onsite parking
- Shared kitchenette
- Private office with natural light
- Reception and waiting area



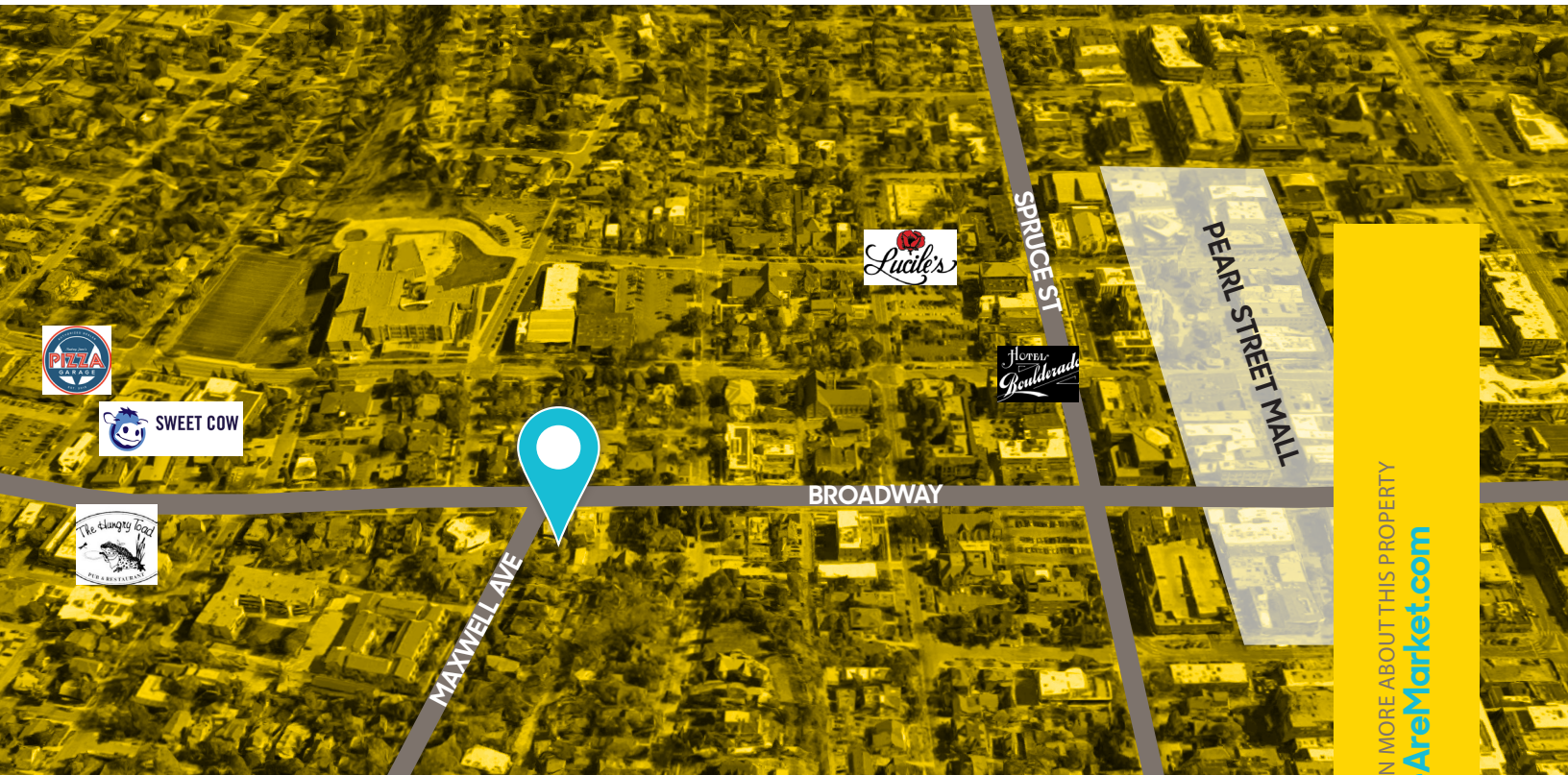
LEARN MORE ABOUT THIS PROPERTY
wearemarket.com

DISCLAIMER: The information contained herein has been obtained from sources believed reliable. While we do not doubt its accuracy, we have not verified it and make no guarantee, warranty or representation about it. It is your responsibility to independently confirm its accuracy and completeness.

BROADWAY



MAXWELL



LEARN MORE ABOUT THIS PROPERTY
WeAreMarket.com

TODD WALSH, CCIM

303 444 4888 todd@WeAreMarket.com

LAURA FRENKEL

303 444 4994 laura@WeAreMarket.com

