

NORTH ADDITION TO SANDPOINT AIRPARK

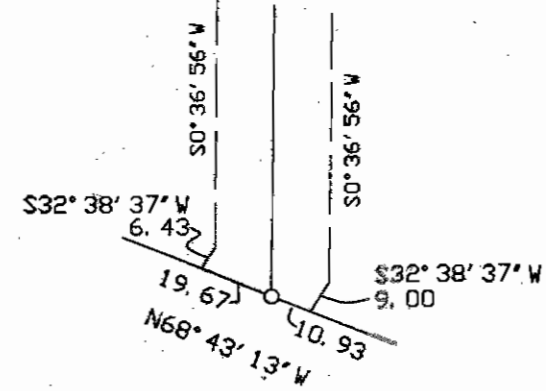
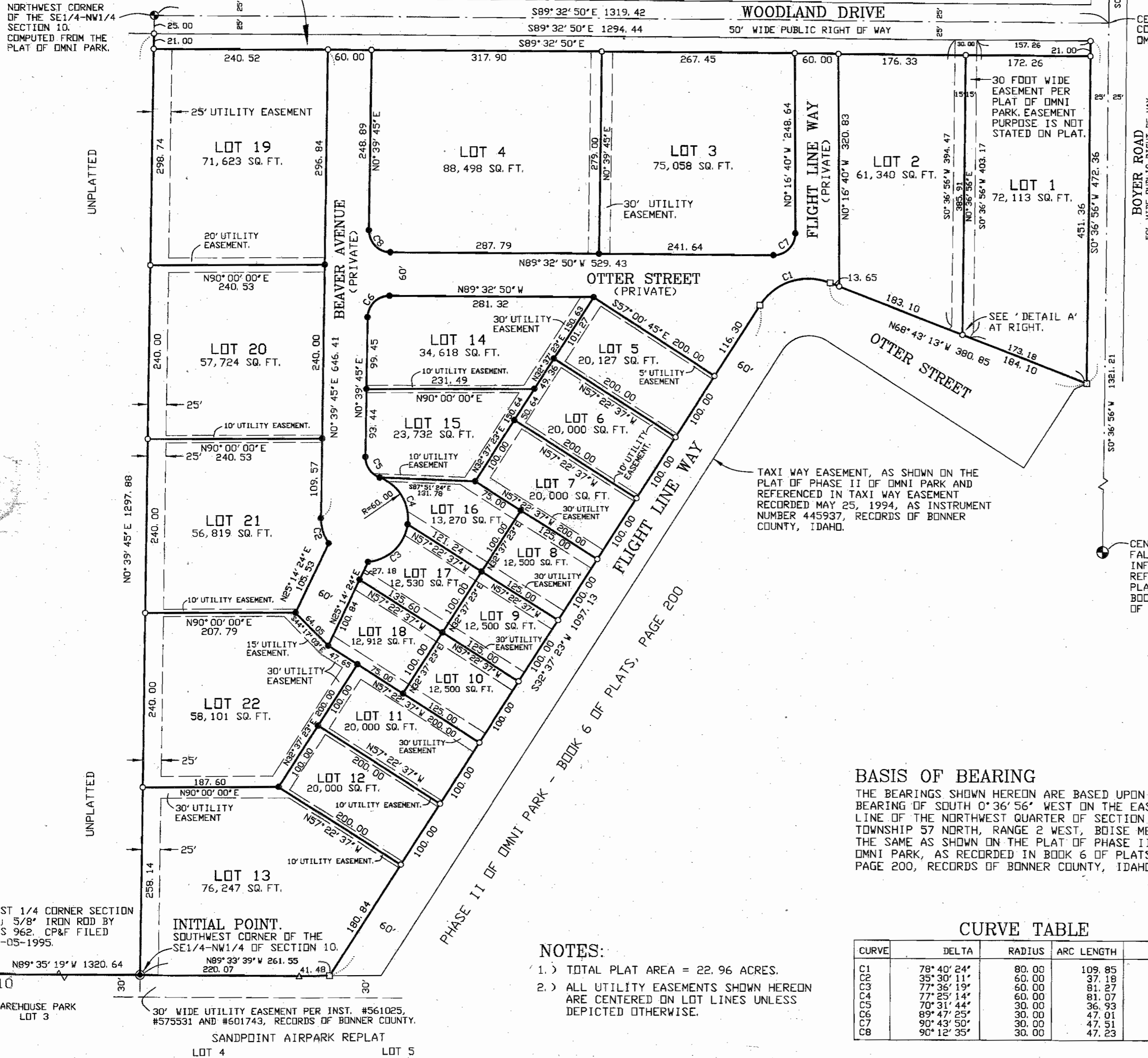
LOCATED IN A PORTION OF SOUTHEAST QUARTER OF THE NORTHWEST QUARTER OF SECTION 10, TOWNSHIP 57 NORTH,
RANGE 2 WEST, BOISE MERIDIAN, CITY OF SANDPOINT, BONNER COUNTY, IDAHO.

21.00 FOOT WIDE STRIP DEDICATED TO THE PUBLIC FOR RIGHT OF WAY PURPOSES (AREA = 27,183 SQ. FT.).

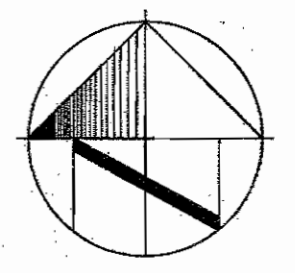
NORTH 1/4 CORNER SECTION 10;
2-1/2" DIA. ALUMINUM CAP
BY PLS 9905, CP&F INST.
NO. 900209.

NORTHWEST CORNER OF THE SE1/4-NW1/4 SECTION 10, COMPUTED FROM THE PLAT OF OMNI PARK.

CENTER-NORTH 1/16 CORNER, COMPUTED FROM THE PLAT OF OMNI PARK.



DETAIL A
1" = 50 FEET



NORTH
SCALE 1" = 100 FEET
TRUE NORTH



LEGEND

- SET 5/8" DIA. X 30" LONG REBAR WITH YELLOW PLASTIC CAP MARKED 'PLS 6107'.
- MONUMENTATION AS NOTED.
- INTERIOR MONUMENT NOT SET. TO BE SET WITHIN 1 CALENDAR YEAR OF RECORDING OF THIS PLAT AS SPECIFIED IN SUBSECTION (1) OF SECTION 50-1333, IDAHO CODE. MONUMENT TO BE SET IS 5/8" X 30" REBAR WITH YELLOW PLASTIC CAP MARKED 'PLS 6107'.
- △ FOUND 5/8" DIA. REBAR WITH PLASTIC CAP BY PLS 7879 FROM THE REPLAT OF LOT 1 OF SANDPOINT AIRPARK, BOOK 6 OF PLATS, PAGE 175.
- FOUND 5/8" DIA. REBAR WITH PLASTIC CAP MARKED PLS 10559, FROM PHASE II OF OMNI PARK, BOOK 6 OF PLATS, PAGE 200.
- FOUND 5/8" DIA. REBAR WITH PLASTIC CAP BY PLS 5087.

BASIS OF BEARING

THE BEARINGS SHOWN HEREON ARE BASED UPON A BEARING OF SOUTH 0°36'56" WEST ON THE EAST LINE OF THE NORTHWEST QUARTER OF SECTION 10, TOWNSHIP 57 NORTH, RANGE 2 WEST, BOISE MERIDIAN, THE SAME AS SHOWN ON THE PLAT OF PHASE II OF OMNI PARK, AS RECORDED IN BOOK 6 OF PLATS, PAGE 200, RECORDS OF BONNER COUNTY, IDAHO.

CURVE TABLE

CURVE	DELTA	RADIUS	ARC LENGTH	CHORD
C1	78°40'24"	80.00	109.85	101.42
C2	35°30'11"	60.00	37.18	36.59
C3	77°36'19"	60.00	81.27	75.20
C4	77°25'14"	60.00	81.07	75.05
C5	70°31'44"	30.00	36.93	34.64
C6	89°47'25"	30.00	47.01	42.35
C7	90°43'50"	30.00	47.51	42.70
C8	90°12'35"	30.00	47.23	42.50

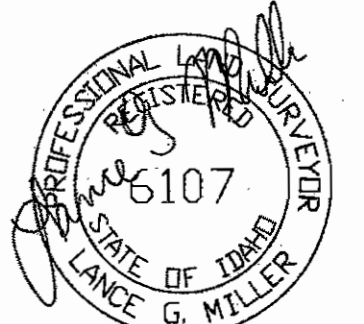
NOTES:

- 1.) TOTAL PLAT AREA = 22.96 ACRES.
- 2.) ALL UTILITY EASEMENTS SHOWN HEREON ARE CENTERED ON LOT LINES UNLESS DEPICTED OTHERWISE.

WEST 1/4 CORNER SECTION 10; 5/8" IRON ROD BY PLS 962, CP&F FILED 12-05-1995.

INITIAL POINT, SOUTHWEST CORNER OF THE SE1/4-NW1/4 OF SECTION 10.

PHASE II OF OMNI PARK - BOOK 6 OF PLATS, PAGE 200



LANCE G. MILLER, P.L.S.
PO BOX 2523
SANDPOINT, ID. 83864
(208) 263-1533