



Vented Upper West Side Corner For Lease

2601-2607 BROADWAY
NEW YORK, NY

NEWMARK

**UPPER WEST SIDE
NEW YORK, NY**

2601-2607 Broadway

CURRENT DIVISIONS

Location

Northwest corner of West 98th Street

Approximate Size

Ground Floor Approx. 6,500 SF
Basement Approx. 3,500 SF

Ground Floor Breakdown

The Regional 2,140 SF
Cleanport 1,390 SF
Variazioni 600 SF
Vacant store 1,120 SF
Lenny's 1,250 SF

Frontage

98 FT on Broadway
12 FT on West 98th Street

Term

Long Term

Possession

Arranged

Neighbors

Naruto Ramen, Au Jus, Metro Diner, 16 Handles, Westside Market, Bank of America, Whole Foods Market, T.J. Maxx, HomeGoods and The UPS Store

Comments

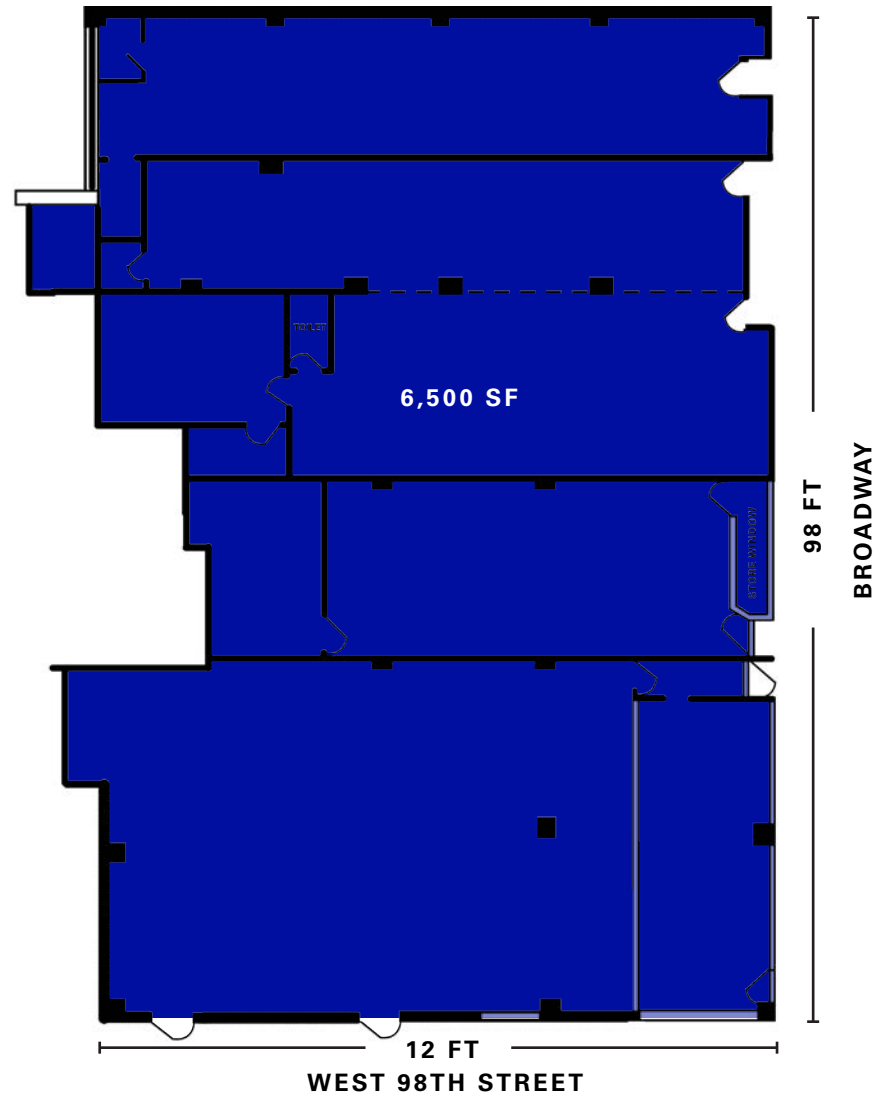
Prime corner retail space with ample basement space included.

Vented for cooking.

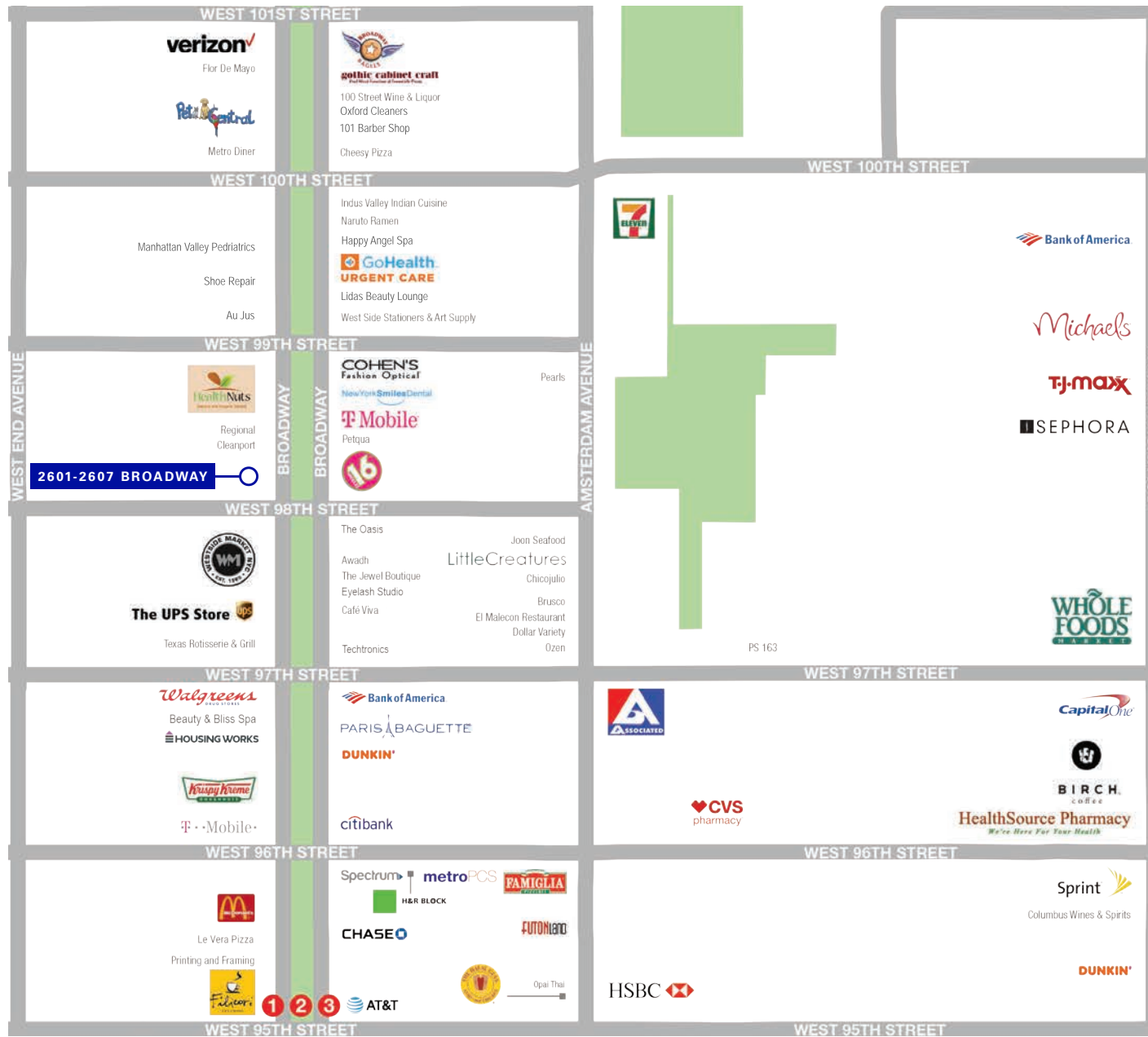
Spaces can be combined.

Located within close proximity to the **1** **2** and **3** trains at the West 95th Street subway station.

Ground Floor



AREA MAP



CONTACT

Jeffrey D Roseman
 t 212-372-2430
 jroseman@ngkf.com

Jeremy Tucker
 t 516-712-5383
 jeremy.tucker@ngkf.com

nmrk.com