

ICI COMMERCIAL

Immediate I-43 Access!

“Certified Industrial, Office, Commercial & Investment Real Estate Specialists”



7,690 Square Foot Premium Face Brick Office Building

FOR SALE or LEASE

Available Unit: 2,201 Square Feet



CONTACT:

Stuart L. Rosenberg, SIOR, CCIM
ICI COMMERCIAL CORPORATION
Lake Geneva, Wisconsin 53147
(262) 249-8800
srosenberg@icicom.com

(All information contained herein is subject to errors and omissions, withdrawal without notice. ICI COMMERCIAL represents the interests of the Seller/Lessor unless by otherwise written agreement)



"Certified Industrial, Commercial & Investment Real Estate Specialists"

PRICE REDUCED!



Immediate Access To I-43 At Highway 67 !

AVAILABLE UNITS: **Unit A: 3,691 Sq. Feet- Leased**
 Unit B: 2,201 Sq. Feet- Available

TOTAL CONTIGUOUS: **5,945 Square Feet**

Total SIZE: **7,690 Square Feet**

ADDRESS: 220 E. Commerce, Elkhorn, Wisconsin 53121

SITE: 16, 245 Sq. Feet (.37 Acres)

OFFICE: 100%

CEILING: 9'

POWER: @ 200 AMPS/120-240 Volt per unit

PARKING: 29 Cars Expandable

AGE: Circa 1996 & 2003

CONSTRUCTION: High Image White Face Brick Exterior

HEAT: Gas Forced Air

AIR-CONDITIONED: Fully

COMMENTS: Interior features high finishes. Flexible layout allows for custom reconfiguration. Immediate access to four way interchange at I-43 & Highway 67. Minutes from major community services. Or...purchase building for your operation with the current tenant and create additional cash flow for your company. Tenant responsible for their own utilities.

LEASE RATE: **\$13.85 Per Ft./ GROSS- Including Taxes & CAM Charges**

R.E. TAXES: **Projected at \$1.76 Per Ft. (2015)**

SALE PRICE: \$785,000 (\$102.08 per sq. ft.....below reproduction costs)

CONTACT: **Stuart L. Rosenberg, SIOR, CCIM**
 (262) 249-8800 Cell: (847) 331-9302

(ICI COMMERCIAL REPRESENTS the Interests of the Seller/Lessor. All information contained herein subject to errors and omissions, withdrawal without notice)



*Representative Pictures From
Unit B- Center Unit*



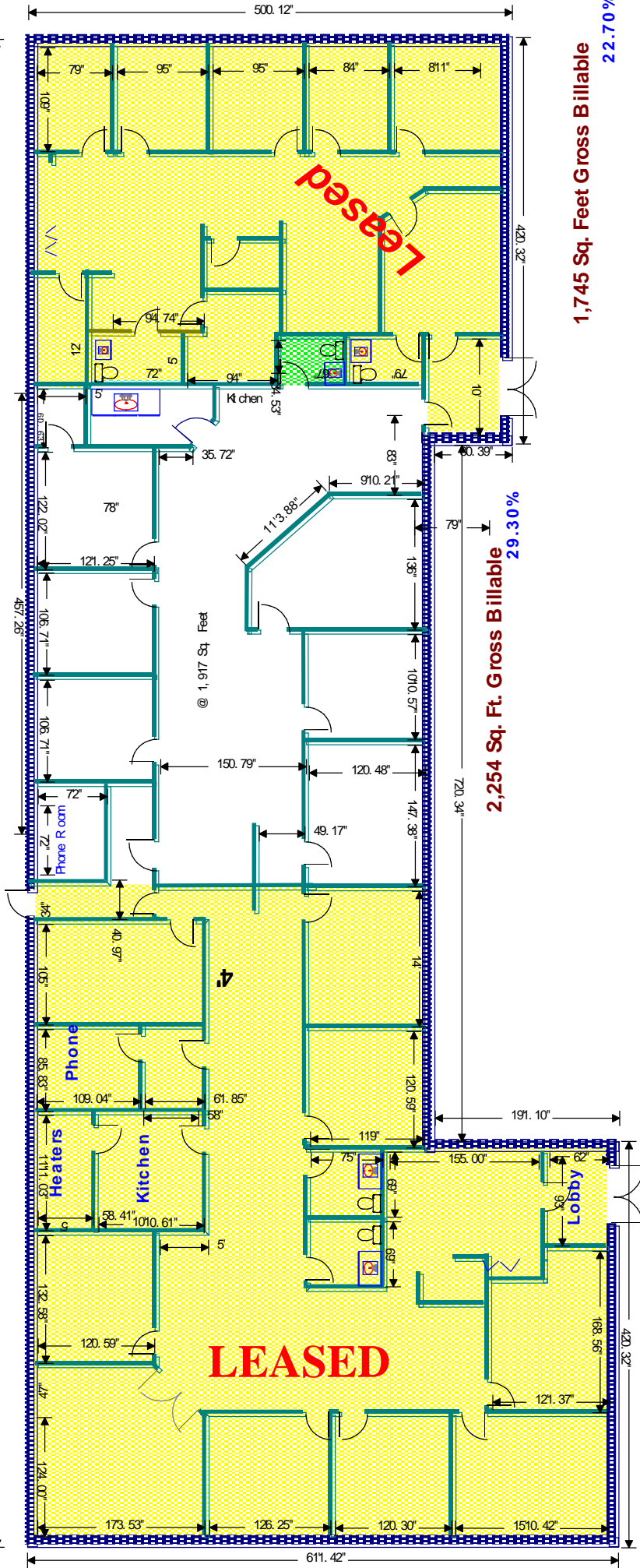


Two Units Now Available - 3,691 S.F. & 2,254 S.F.
(Computer Lease)

Preliminary Office Layouts-Subject To Change

andgd11

Building Reported At 7,690 Square Feet



3,691 Sq. Ft. Gross Billable 48%
 Includes Ext. Walls

1,745 Sq. Feet Gross Billable
22.70%

2,254 Sq. Ft. Gross Billable
29.30%

Copyright 2009: ICI Commercial// This drawing is the property of ICI Commercial and is to be used for internal planning purposes only. Although very close to scale, this drawing may not be 100% accurate. This drawing may not be reproduced without the express written consent of ICI Commercial Corporation

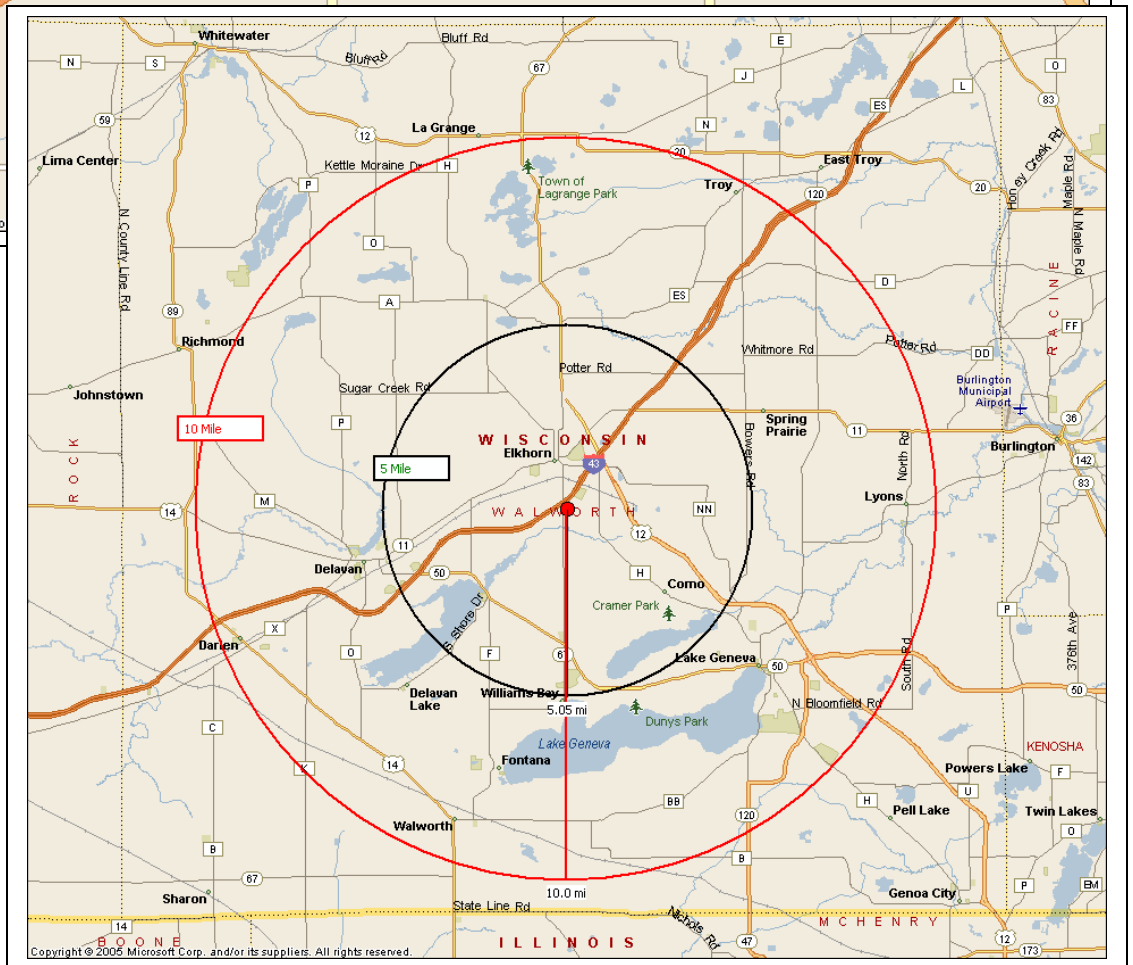
(Gross Billable Includes Common Area / Exterior Walls For 1
 (All Unit Sizes Subject To Change)



REGIONAL LOCATION



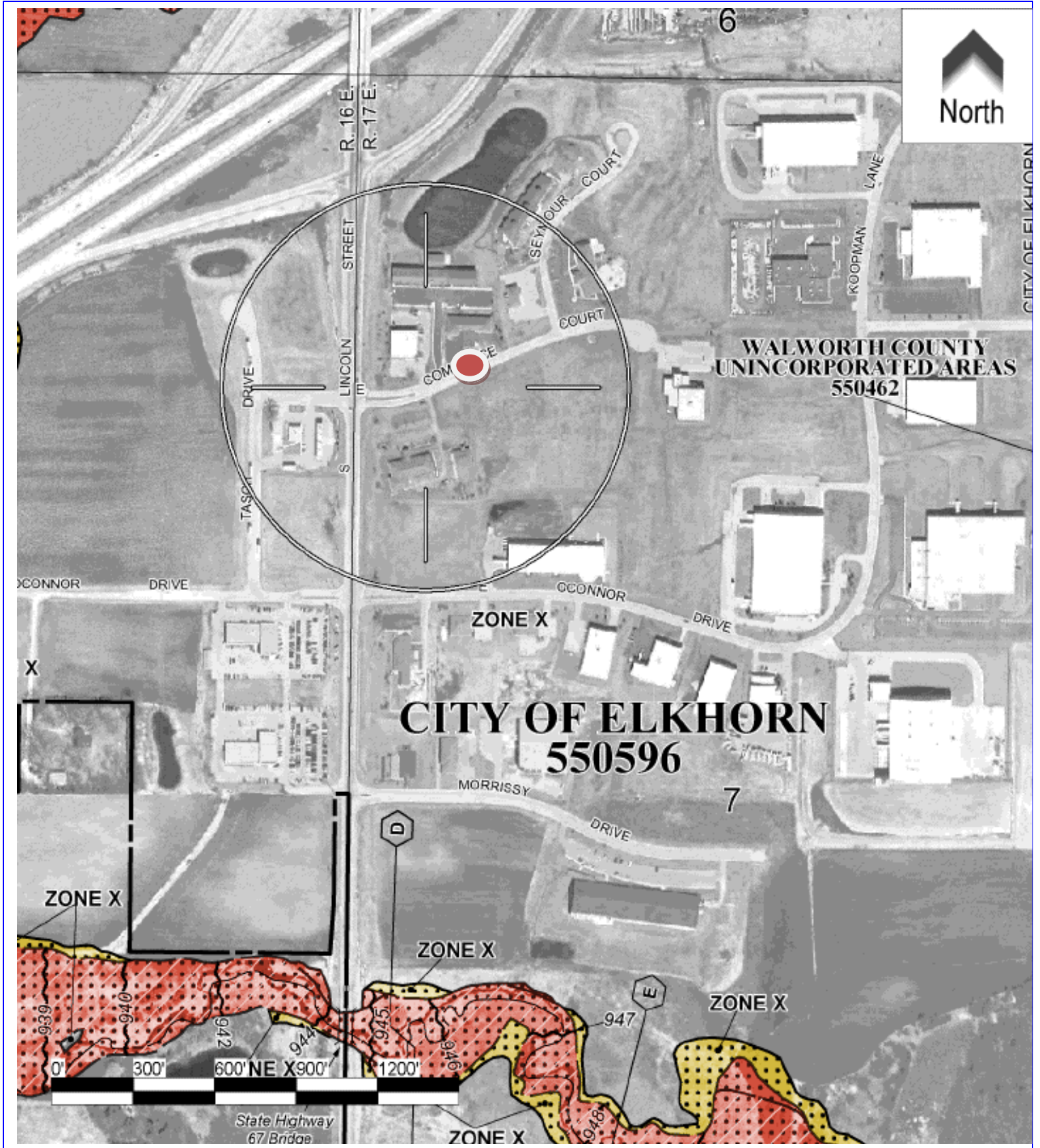
**5 Mile
&
10 Mile
Radius**





FLOOD PLAIN MAP

220 Commerce



BROKER DISCLOSURE TO NON-RESIDENTIAL CUSTOMERS

1 Prior to negotiating on your behalf the Broker must provide you the following disclosure statement:

2 **BROKER DISCLOSURE TO CUSTOMERS**

3 You are a customer of the broker. The broker is either an agent of another party in the transaction or a subagent of another broker
4 who is the agent of another party in the transaction. The broker, or a salesperson acting on behalf of the broker, may provide
5 brokerage services to you. Whenever the broker is providing brokerage services to you, the broker owes you, the customer, the
6 following duties:

- 7 ■ The duty to provide brokerage services to you fairly and honestly.
- 8 ■ The duty to exercise reasonable skill and care in providing brokerage services to you.
- 9 ■ The duty to provide you with accurate information about market conditions within a reasonable time if you request it, unless
10 disclosure of the information is prohibited by law.
- 11 ■ The duty to disclose to you in writing certain material adverse facts about a property, unless disclosure of the information is
12 prohibited by law (See Lines 47-55).
- 13 ■ The duty to protect your confidentiality. Unless the law requires it, the broker will not disclose your confidential information or the
14 confidential information of other parties (See Lines 22-39).
- 15 ■ The duty to safeguard trust funds and other property the broker holds.
- 16 ■ The duty, when negotiating, to present contract proposals in an objective and unbiased manner and disclose the advantages and
17 disadvantages of the proposals.

18 Please review this information carefully. A broker or salesperson can answer your questions about brokerage services, but if you
19 need legal advice, tax advice, or a professional home inspection, contact an attorney, tax advisor, or home inspector.

20 This disclosure is required by section 452.135 of the Wisconsin statutes and is for information only. It is a plain-language summary of
21 a broker's duties to a customer under section 452.133 (1) of the Wisconsin statutes.

22 **CONFIDENTIALITY NOTICE TO CUSTOMERS**

23 BROKER WILL KEEP CONFIDENTIAL ANY INFORMATION GIVEN TO BROKER IN CONFIDENCE, OR ANY INFORMATION
24 OBTAINED BY BROKER THAT HE OR SHE KNOWS A REASONABLE PERSON WOULD WANT TO BE KEPT CONFIDENTIAL,
25 UNLESS THE INFORMATION MUST BE DISCLOSED BY LAW OR YOU AUTHORIZE THE BROKER TO DISCLOSE PARTICULAR
26 INFORMATION. A BROKER SHALL CONTINUE TO KEEP THE INFORMATION CONFIDENTIAL AFTER BROKER IS NO LONGER
27 PROVIDING BROKERAGE SERVICES TO YOU.

28 THE FOLLOWING INFORMATION IS REQUIRED TO BE DISCLOSED BY LAW:

- 29 1. MATERIAL ADVERSE FACTS, AS DEFINED IN SECTION 452.01 (5g) OF THE WISCONSIN STATUTES (SEE LINES 47-55).
- 30 2. ANY FACTS KNOWN BY THE BROKER THAT CONTRADICT ANY INFORMATION INCLUDED IN A WRITTEN INSPECTION
31 REPORT ON THE PROPERTY OR REAL ESTATE THAT IS THE SUBJECT OF THE TRANSACTION.

32 TO ENSURE THAT THE BROKER IS AWARE OF WHAT SPECIFIC INFORMATION YOU CONSIDER CONFIDENTIAL, YOU MAY LIST
33 THAT INFORMATION BELOW (SEE LINES 35-36). AT A LATER TIME, YOU MAY ALSO PROVIDE THE BROKER WITH OTHER
34 INFORMATION YOU CONSIDER TO BE CONFIDENTIAL.

35 **CONFIDENTIAL INFORMATION:** _____

36 _____
37 **NON-CONFIDENTIAL INFORMATION** (The following information may be disclosed by Broker): _____

38 _____
39 (INSERT INFORMATION YOU AUTHORIZE THE BROKER TO DISCLOSE SUCH AS FINANCIAL QUALIFICATION INFORMATION.)

40 **CONSENT TO TELEPHONE SOLICITATION**

41 I/We agree that the Broker and any affiliated settlement service providers (for example, a mortgage company or title company) may
42 call our/my home or cell phone numbers regarding issues, goods and services related to the real estate transaction until I/we
43 withdraw this consent in writing. List Home/Cell Numbers: _____

44 **SEX OFFENDER REGISTRY**

45 Notice: You may obtain information about the sex offender registry and persons registered with the registry by contacting the
46 Wisconsin Department of Corrections on the Internet at: <http://offender.doc.state.wi.us/public/> or by phone at 877-234-0085.

47 **DEFINITION OF MATERIAL ADVERSE FACTS**

48 A "material adverse fact" is defined in Wis. Stat. § 452.01(5g) as an adverse fact that a party indicates is of such significance, or that
49 is generally recognized by a competent licensee as being of such significance to a reasonable party, that it affects or would affect
50 the party's decision to enter into a contract or agreement concerning a transaction or affects or would affect the party's decision
51 about the terms of such a contract or agreement. An "adverse fact" is defined in Wis. Stat. § 452.01(1e) as a condition or occurrence
52 that a competent licensee generally recognizes will significantly and adversely affect the value of the property, significantly reduce
53 the structural integrity of improvements to real estate, or present a significant health risk to occupants of the property; or information
54 that indicates that a party to a transaction is not able to or does not intend to meet his or her obligations under a contract or
55 agreement made concerning the transaction.

No representation is made as to the legal validity of any provision or the adequacy of any provision in any specific transaction.

Copyright 2006 by Wisconsin REALTORS® Association

Drafted by Attorney Richard J. Staff