

**PRIME DEVELOPMENT
LAND
FOR SALE
SOMERSET, WI 54025**

Applegate Inc.



Commercial Real Estate Sales and Leasing
Property Management
www.applegatecommercial.com

651-230-0762

PO Box 32
New Richmond, WI 54017

1940 Greeley St. #202,
Stillwater, MN 55082



AVAILABLE:

158.92 AC

USES:

Prime residential development opportunity

SALE PRICE:

\$ 3,000,000

VIRTUAL TOUR:

<https://tours.spacecrafting.com/b-33yn>

ZONING:

[Code of Ordinances - Document Viewer \(encodeplus.com\)](#)

SUMMARY:

Prime residential development opportunity located 13 miles from the Stillwater bridge. Just north of County Rd C, comprised of 158.92 acres. The land is a mixture of flat-open cropland, scenic views and also offers some trees in areas. There is partial Apple River Frontage as well as lightly rolling slopes. There are multiple access points off County Rd C as well as off of 100th Street. The property is 4 miles from Somerset and is also 4 miles from Highways 64/35 N access. This area has been fast growing and is in high demand. Within minutes of Somerset, New Richmond, Houlton, Hudson and Stillwater.

Please see the numerous supplements that contain additional information. All information is deemed accurate but not guaranteed and all dimensions are estimates that have not been surveyed.

APPLEGATE INC COMMERCIAL REAL ESTATE SALES AND LEASING

252 So. Knowles Ave.

NEW RICHMOND, WI, 54017

www.applegatecommercial.com

Tj Wilson

Broker

651.253.6010 Mobile

tjw@frontiernet.net

Nicholas Wilson

Agent

651.757.8378 Mobile

nicholaswilson@frontiernet.net

PROPERTY PHOTOS

PRIME DEVELOPMENT
LAND
FOR SALE



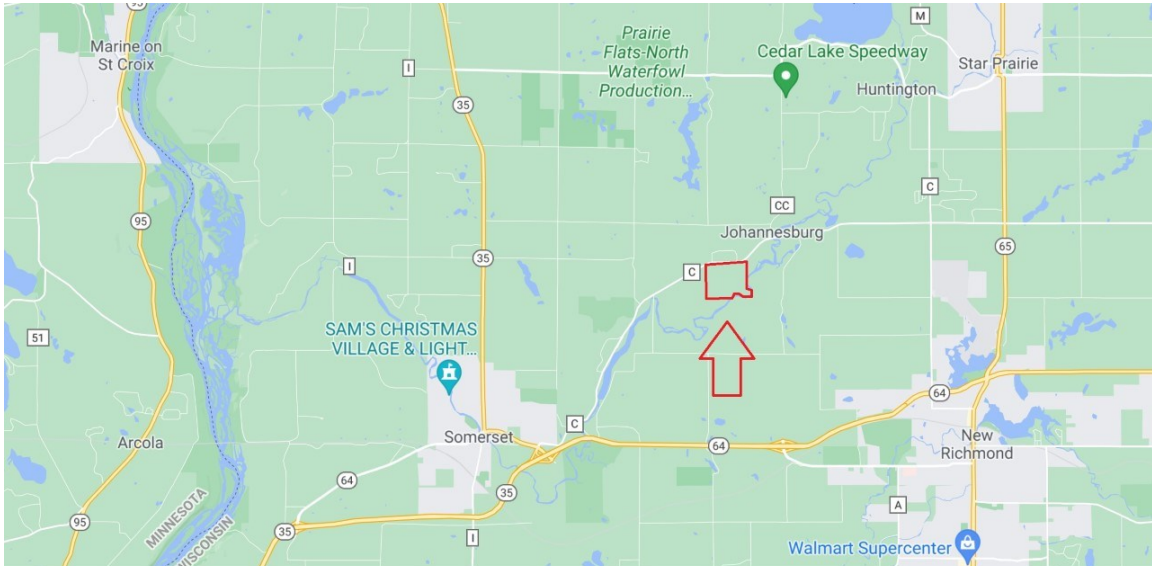
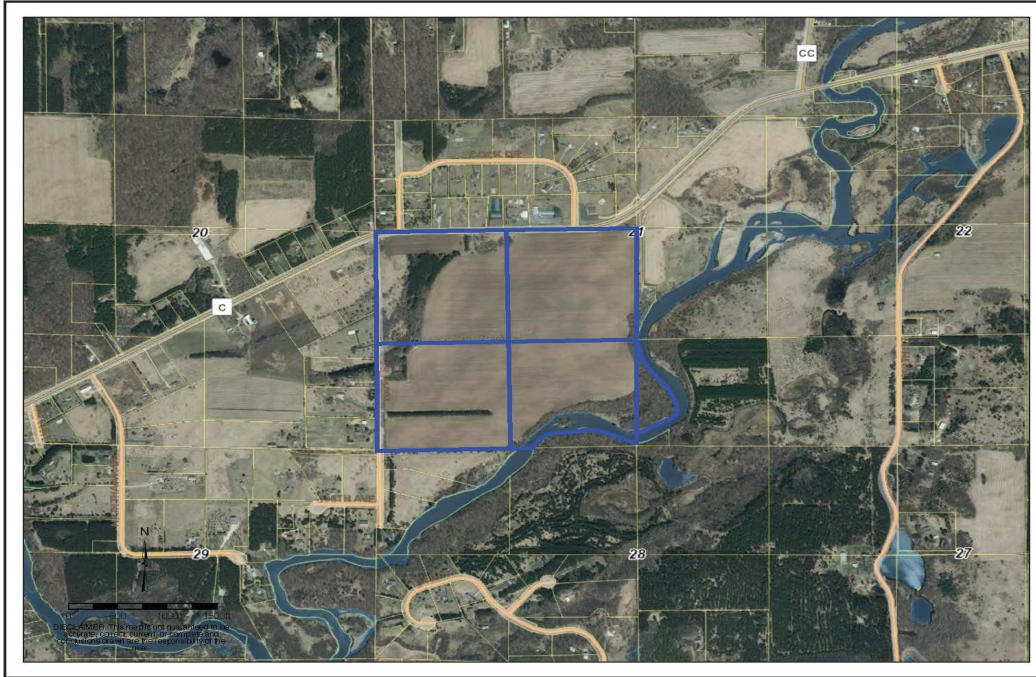
APPLEGATE INC COMMERCIAL REAL ESTATE SALES AND LEASING
252 So. Knowles Ave.
NEW RICHMOND, WI, 54017
www.applegatecommercial.com

Tj Wilson
Broker
651.253.6010 Mobile
tjw@frontiernet.net

Nicholas Wilson
Agent
651.757.8378 Mobile
nicholaswilson@frontiernet.net

AERIAL MAP

**PRIME DEVELOPMENT
LAND
FOR SALE**



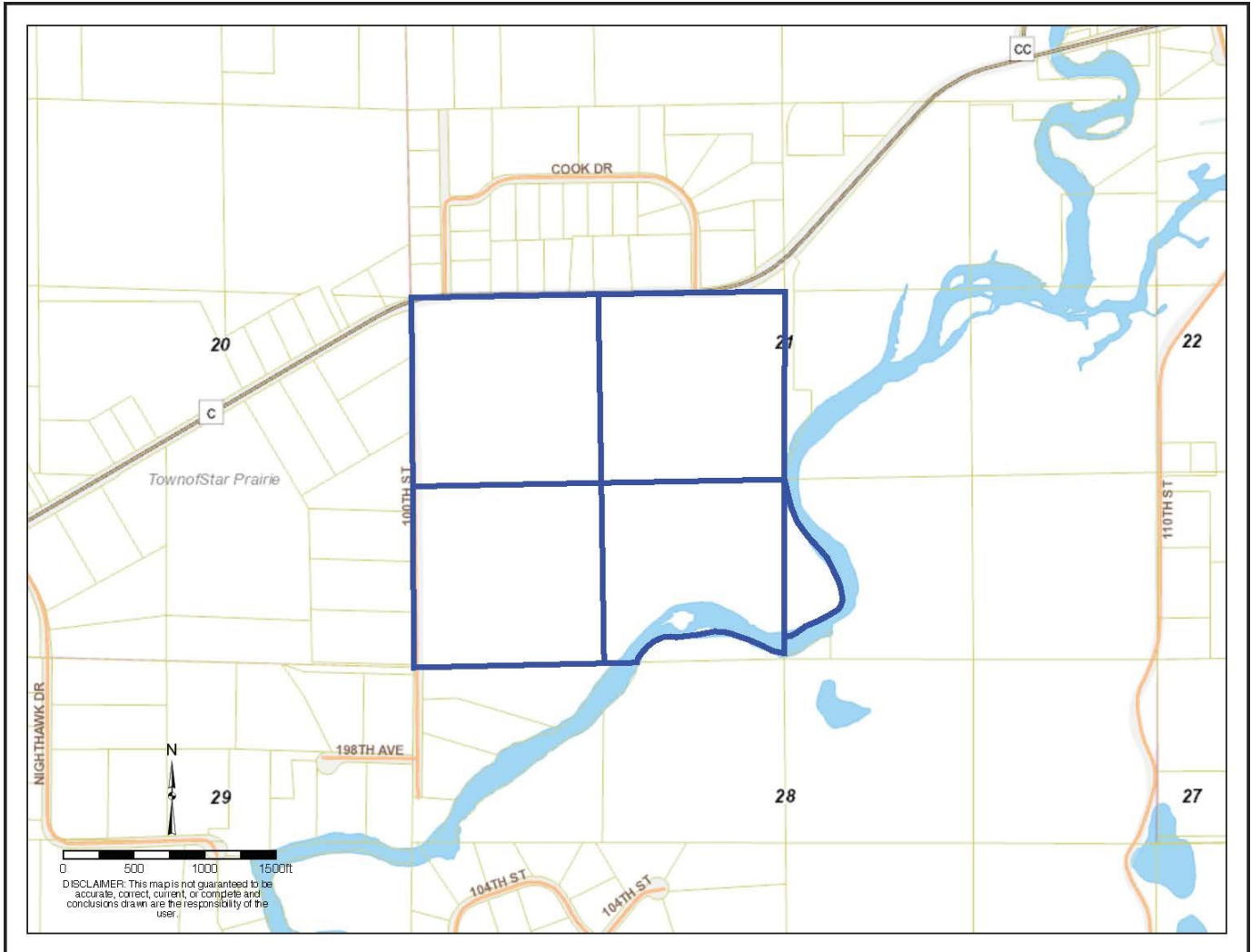
APPLEGATE INC COMMERCIAL REAL ESTATE SALES AND LEASING
252 So. Knowles Ave.
NEW RICHMOND, WI, 54017
www.applegatecommercial.com

Tj Wilson
Broker
651.253.6010 Mobile
tjw@frontiernet.net

Nicholas Wilson
Agent
651.757.8378 Mobile
nicholaswilson@frontiernet.net

STREET MAP

**PRIME DEVELOPMENT
LAND
FOR SALE
TOWN OF STAR PRAIRIE, WI**



APPLEGATE INC COMMERCIAL REAL ESTATE SALES AND LEASING
252 So. Knowles Ave.
NEW RICHMOND, WI, 54017
www.applegatecommercial.com

Tj Wilson
Broker
651.253.6010 Mobile
tjw@frontiernet.net

Nicholas Wilson
Agent
651.757.8378 Mobile
nicholaswilson@frontiernet.net