

FOR LEASE

601 W FORT STREET
DETROIT, MI 48226



PROPERTY FEATURES:

- Great creative space located in the CBD
- 12'-14' exposed ceilings
- Brick interior
- Large windows
- 10,000 SF full floors available
- Cool freight elevator with exterior access
- Ready to create new space
- Parking adjacent to building
- Close to Campus Martius Park



FOR MORE INFORMATION PLEASE CONTACT:

STEVE EISENSHTADT
steve.eisenshtadt@freg.com

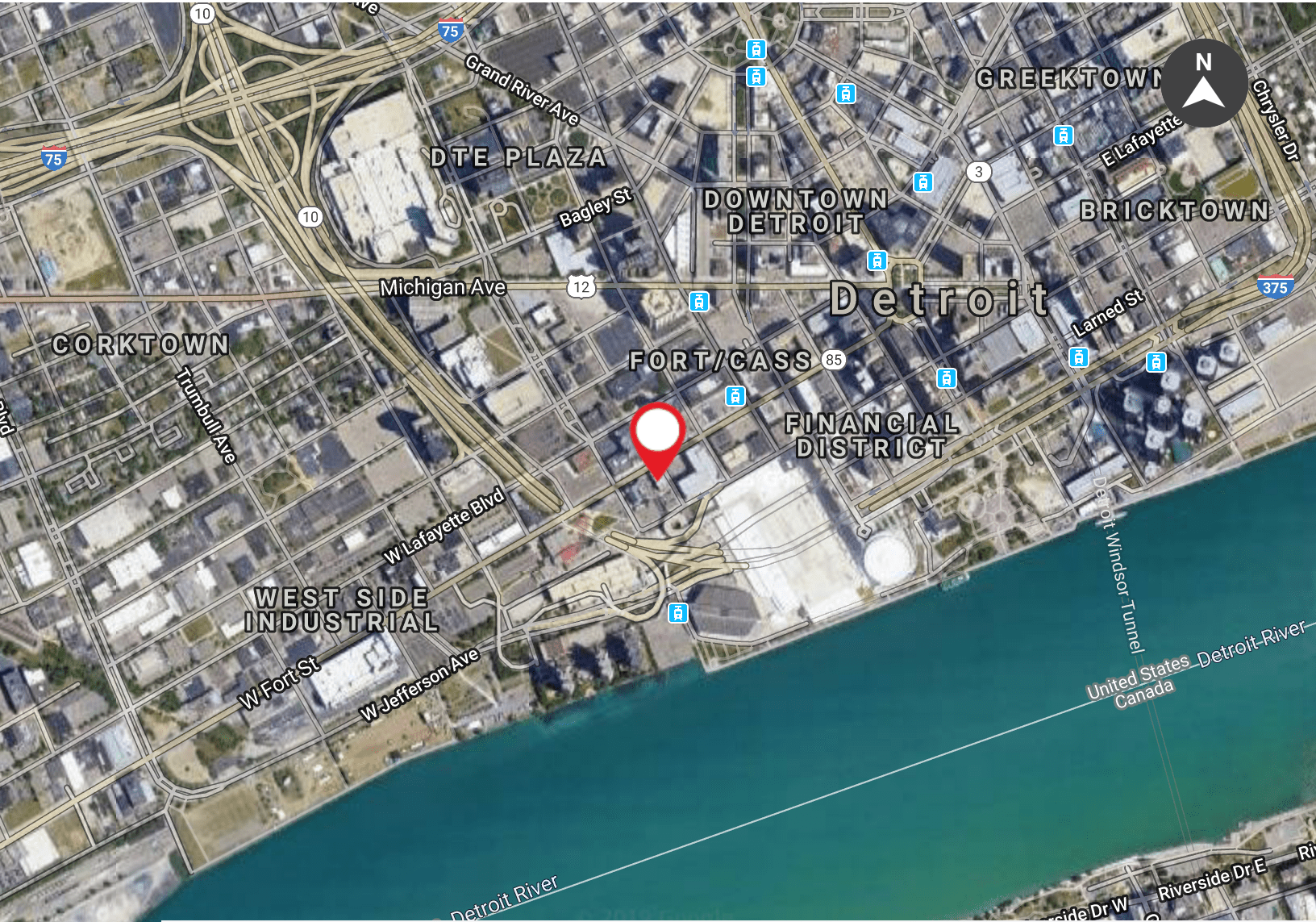
248.324.2000

eCODE 190

The information provided herein along with any attachment(s) was obtained from sources believed to be reliable, however, Friedman Real Estate makes no guarantees, warranties, or representations as to the completeness or accuracy of such information and legal counsel is advised. All information provided is subject to verification and no liability for reliance on such information or errors or omissions is assumed. The presentation of this property is submitted subject to errors, omissions, change of price or conditions, prior sale or lease, or withdrawal without notice. Copyright © 2019 Friedman Real Estate. All rights reserved.

FOR LEASE

601 W FORT STREET
DETROIT, MI 48226



Map data ©2019 Google Imagery ©2019 , CNES / Airbus, DigitalGlobe, First Base Solutions, Sanborn, U.S. Geological Survey, USDA Farm Service Agency

TRAFFIC COUNTS

INTERSECTION	CARS PER DAY
W Fort St and 2nd Blvd NE	11,072
W Fort St and 2nd Blvd SW	11,700
W Congress St and 2nd Blvd NE	905
W Congress St and 2nd Blvd SW	708

DEMOGRAPHICS

	1 MILE	3 MILES	5 MILES
Total Households	4,226	31,913	79,087
Total Population	7,093	62,495	199,085
Average HH Income	\$38,707	\$31,899	\$33,359

FOR MORE INFORMATION PLEASE CONTACT:

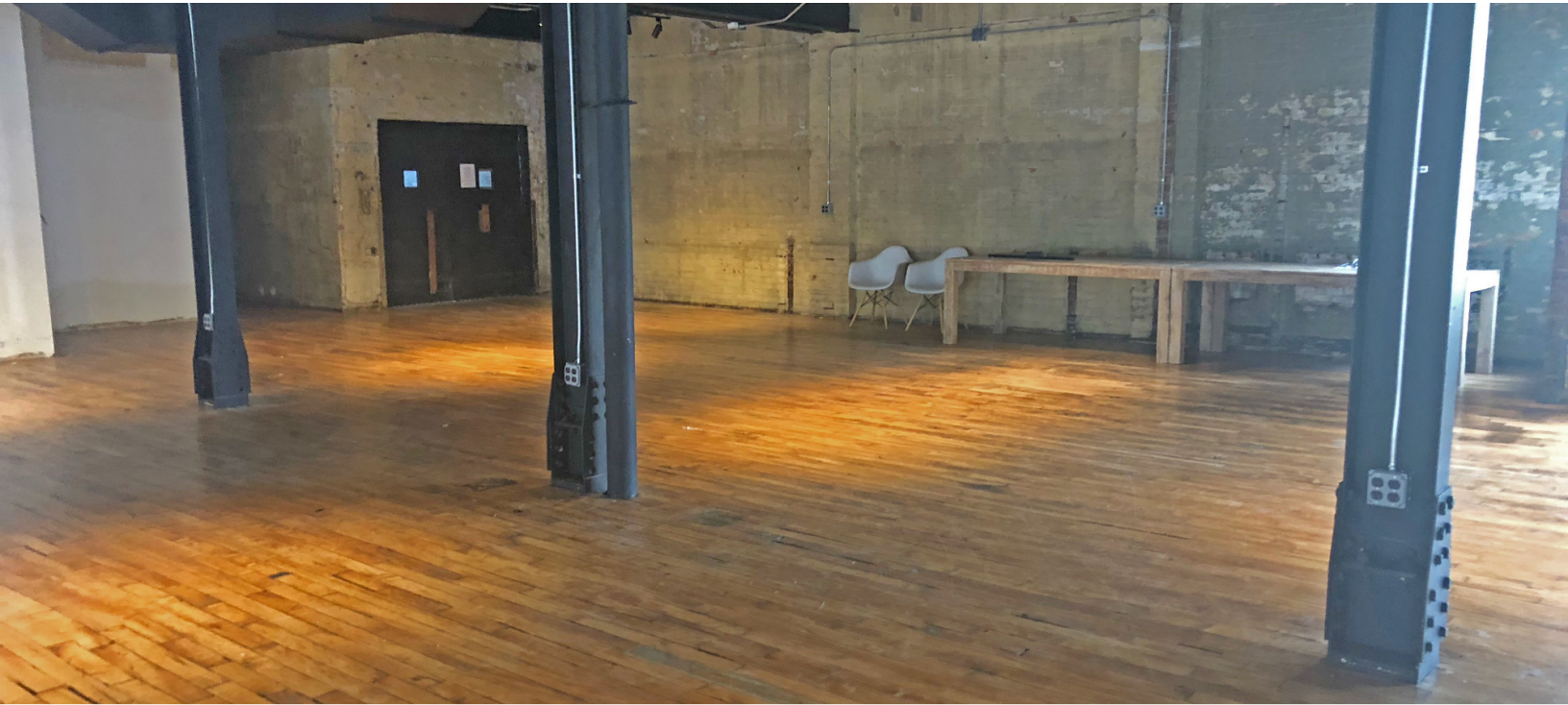
STEVE EISENSHTADT steve.eisenshtadt@freg.com

248.324.2000

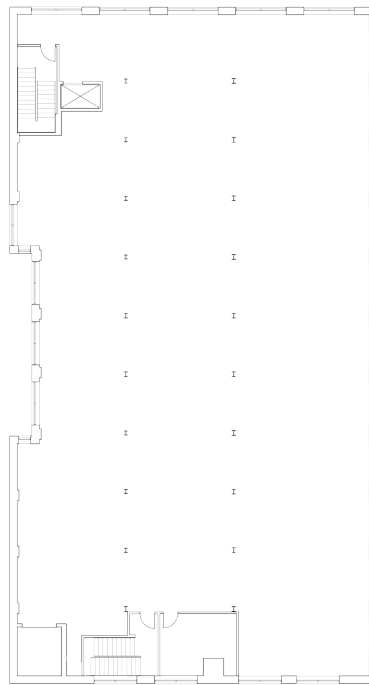
eCODE 190

FOR LEASE

601 W FORT STREET
DETROIT, MI 48226



3rd Floor Space



3rd Floor

FOR MORE INFORMATION PLEASE CONTACT:

STEVE EISENSHTADT steve.eisenshtadt@freg.com

248.324.2000

eCODE 190

FOR LEASE

601 W FORT STREET
DETROIT, MI 48226



1st Floor Space



FOR MORE INFORMATION PLEASE CONTACT:

STEVE EISENSHTADT steve.eisenshtadt@freg.com

248.324.2000
eCODE 190