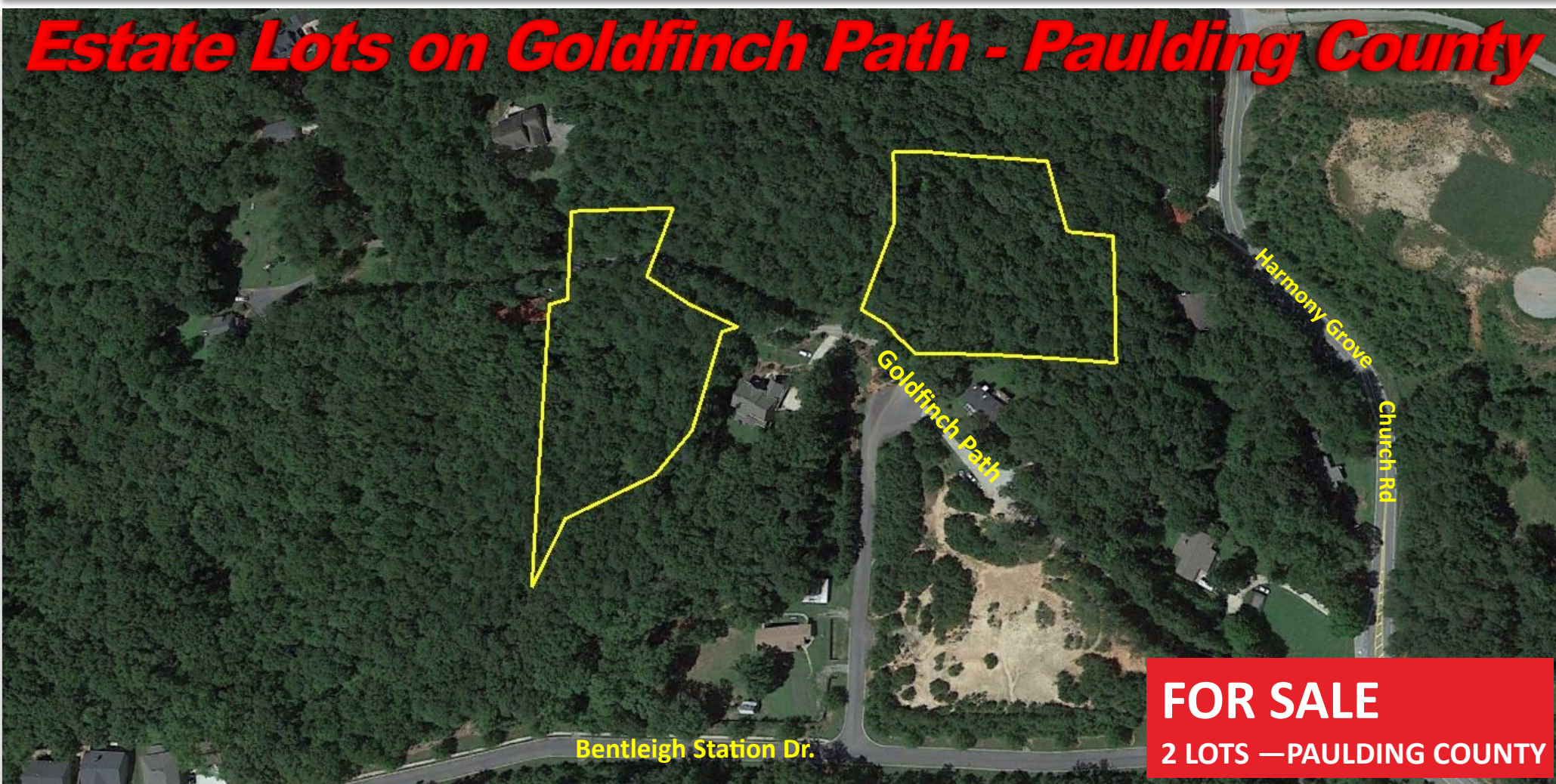


Estate Lots on Goldfinch Path - Paulding County

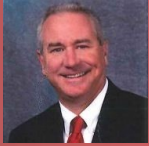


FOR SALE
2 LOTS — PAULDING COUNTY



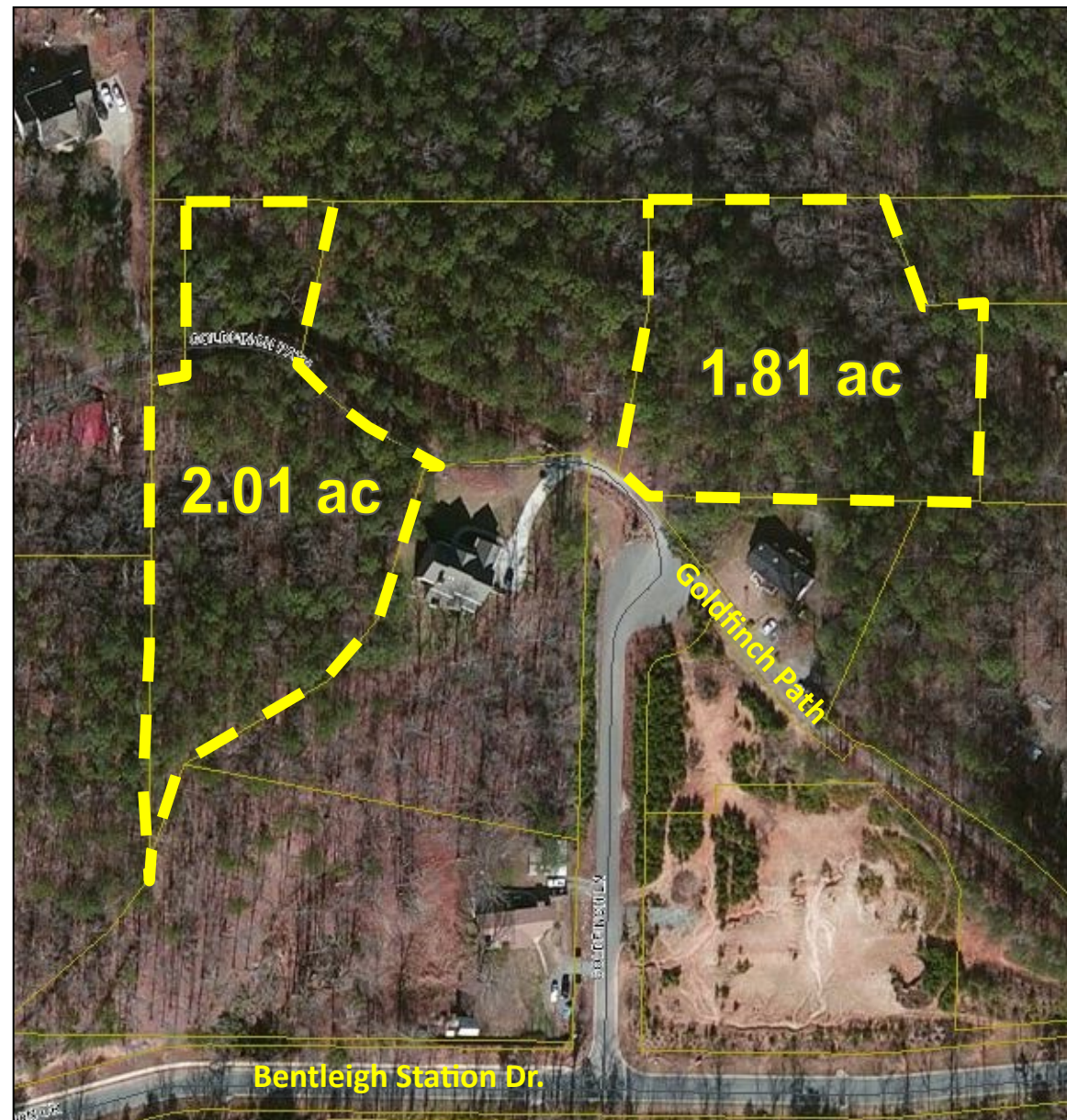
Bobby Bresee | 404-781-7975
bbresee@atlantalandgroup.com

KW Commercial Peachtree Road
804 Town Blvd. Ste A2040
Atlanta, GA 30319
404-419-3500



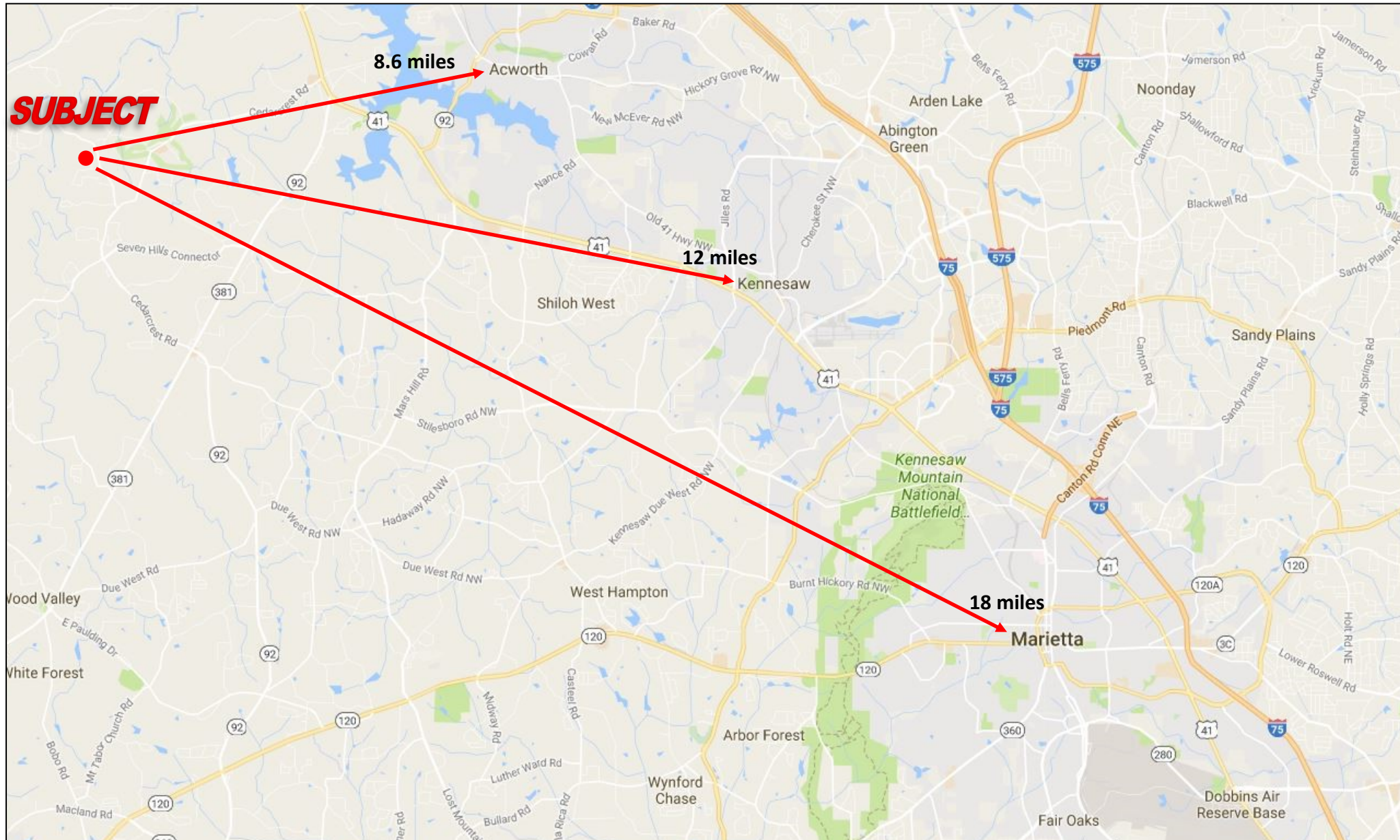
PROPERTY OVERVIEW

- 2 estate lots—2.01 acres & 1.81 acres
- Zoned R2—Paulding County
- Gently rolling topography
- All utilities available to site
- Assigned Schools:
 - Burnt Hickory Elementary School
 - Sammy McClure Sr. Middle School
 - North Paulding High School
- Approx. 1.7 miles to nearest grocery store
- **Asking \$60,000 per Estate Lot**



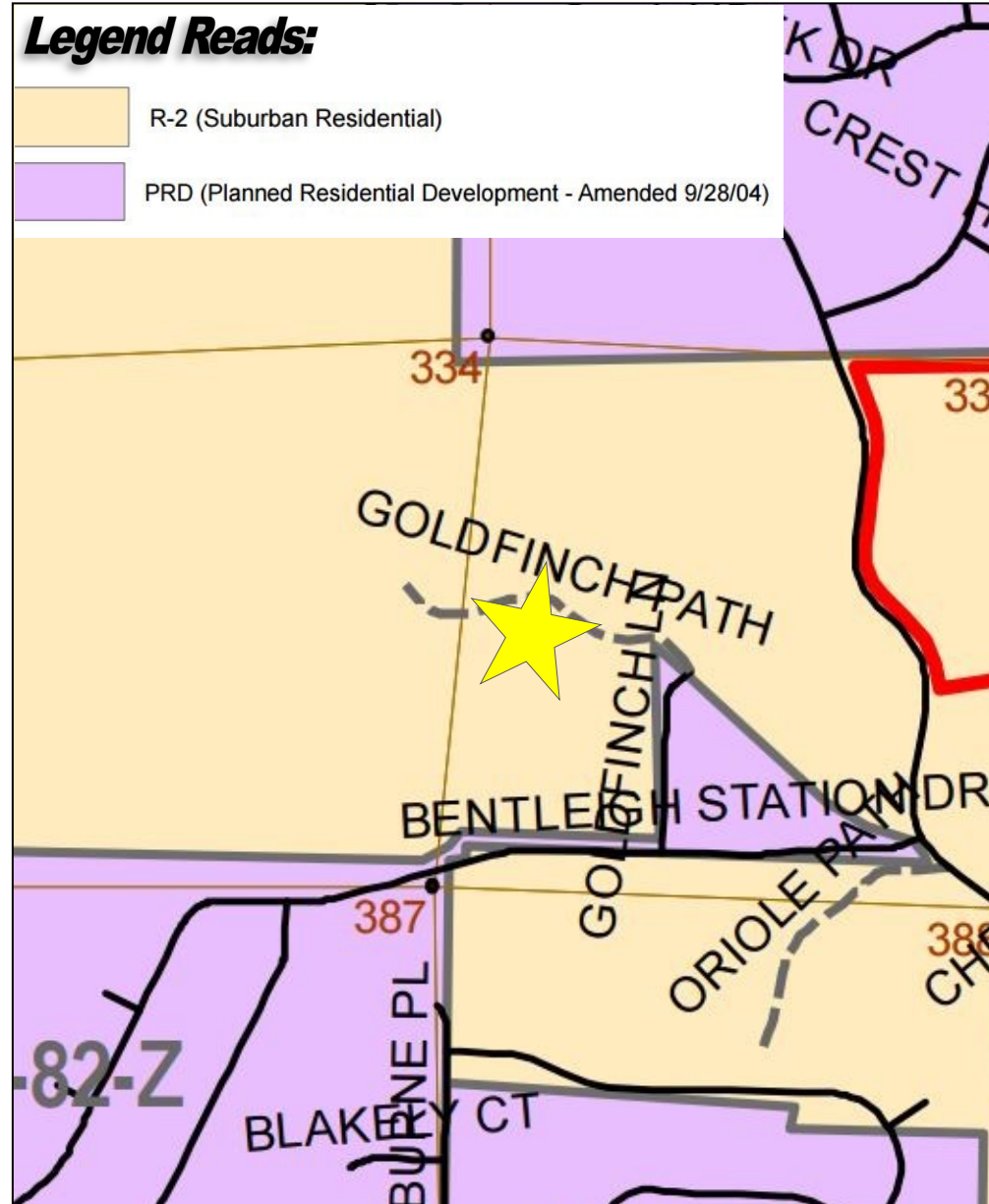
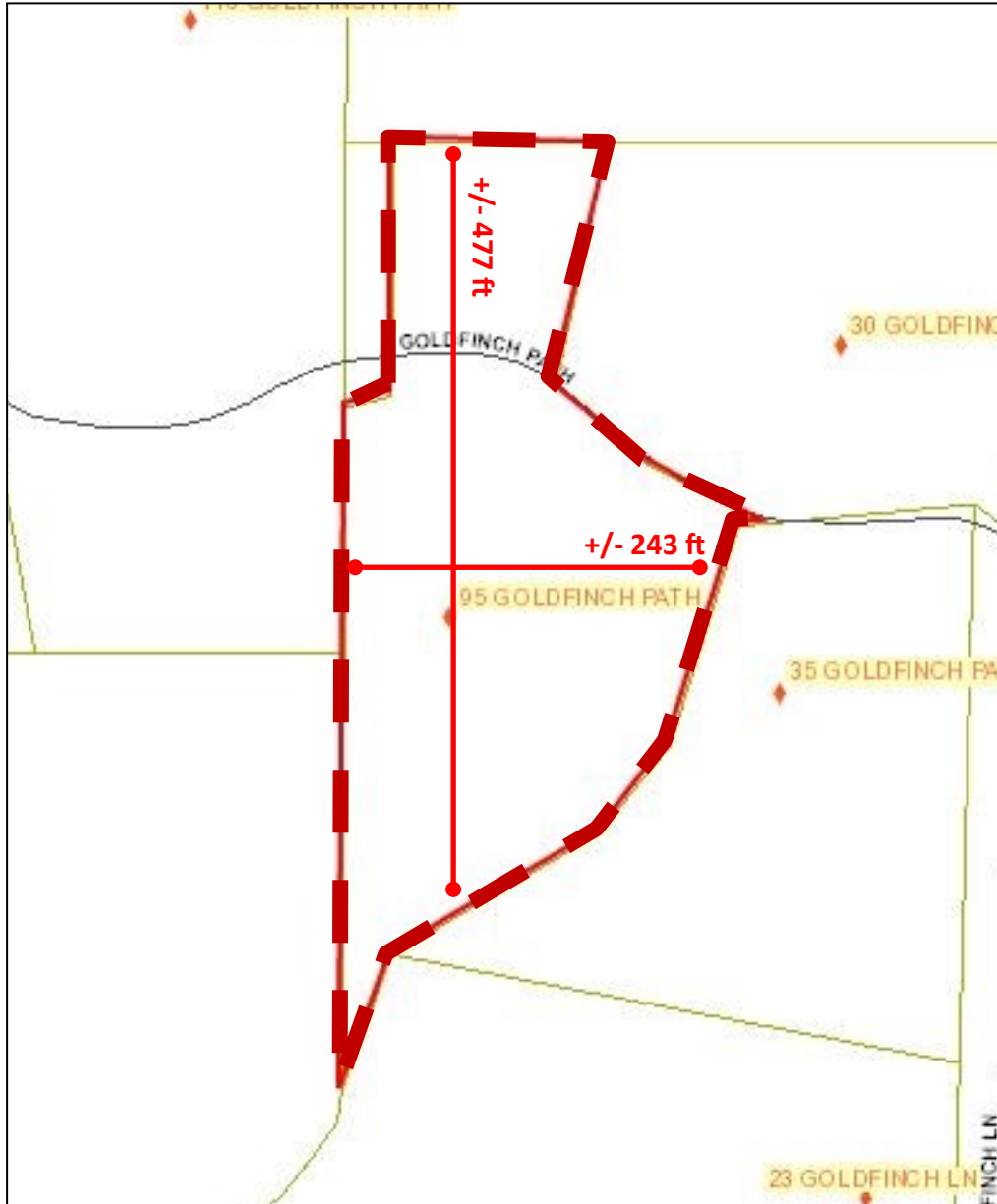


LOCATION MAP



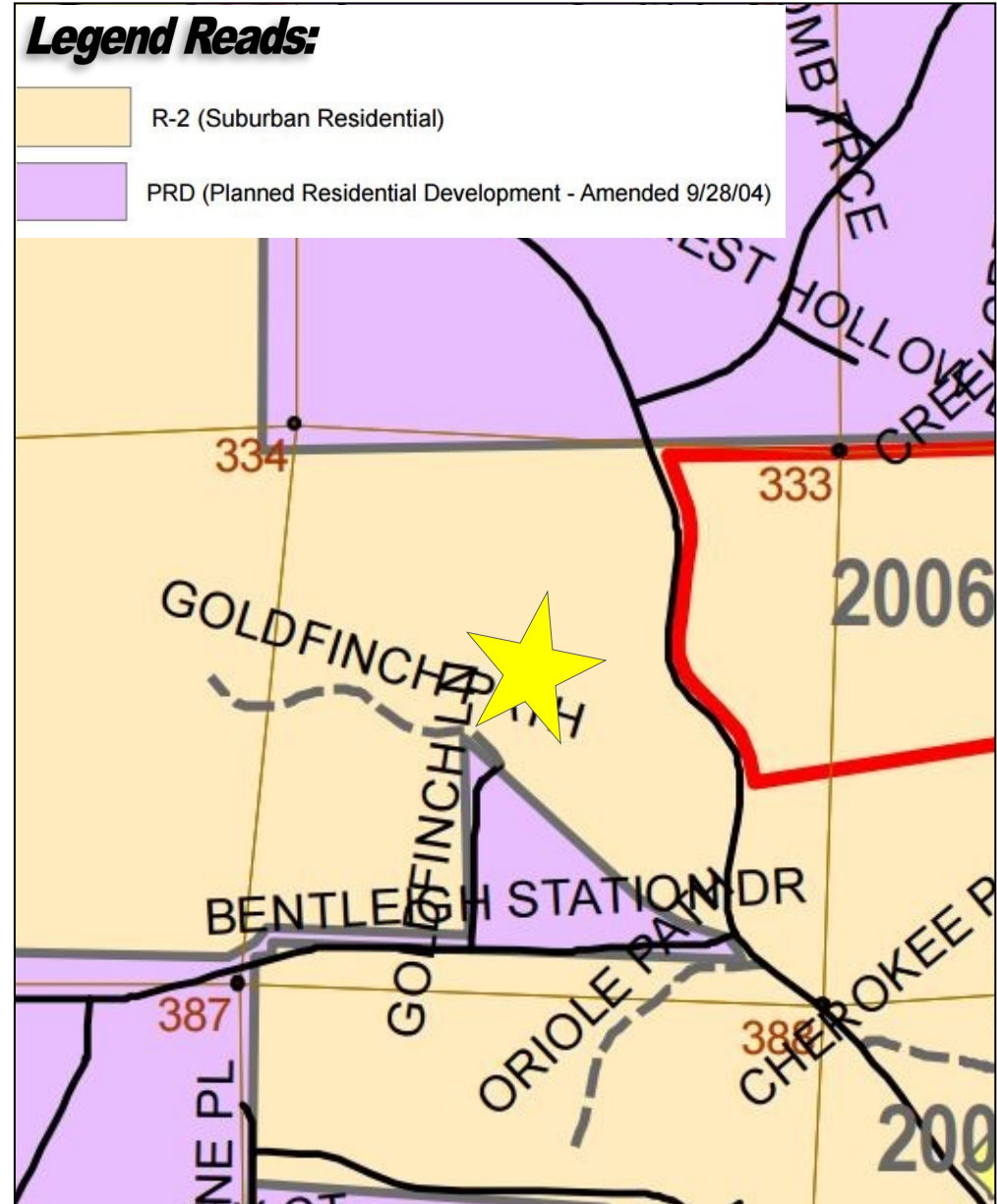


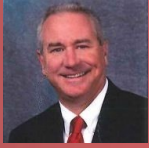
2.01 ACRE LOT—TAX PLAT AND ZONING



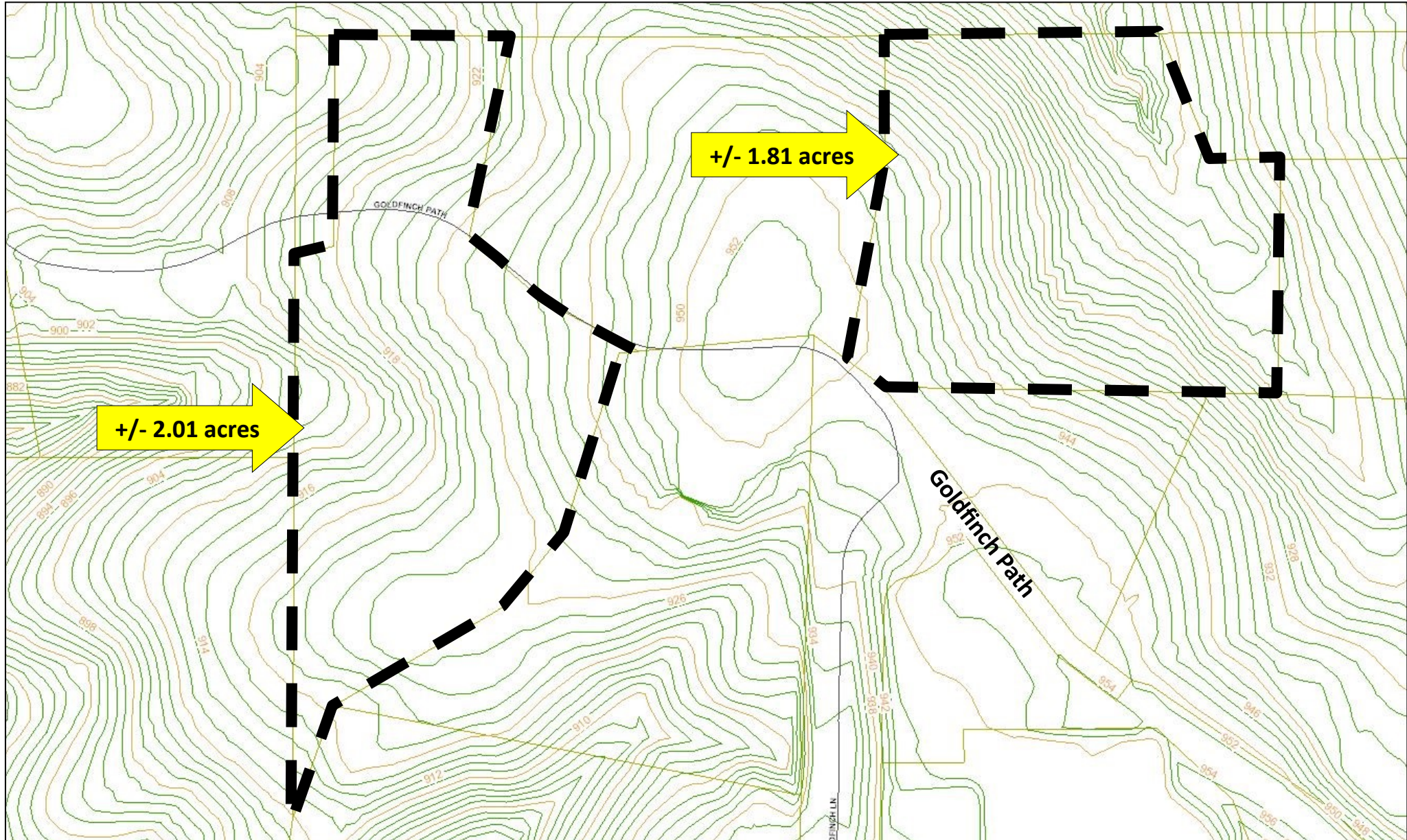


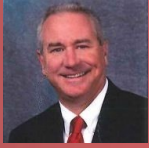
1.81 ACRE LOT—TAX PLAT AND ZONING





TOPOGRAPHY





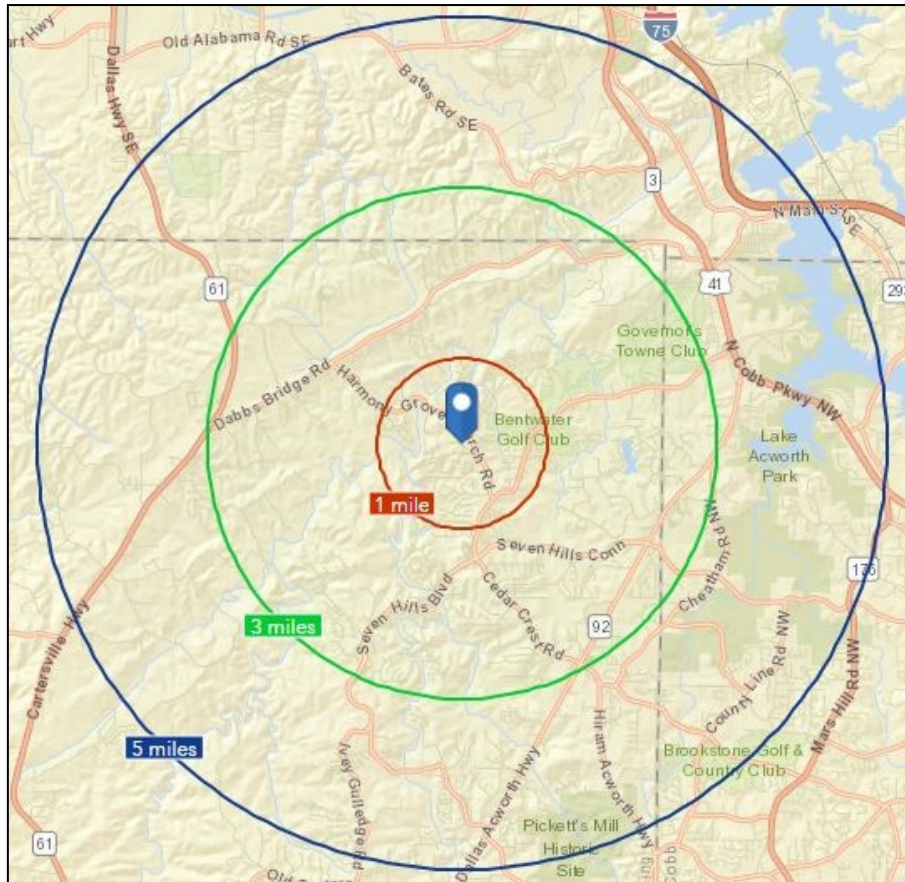
SUBMARKET AERIAL



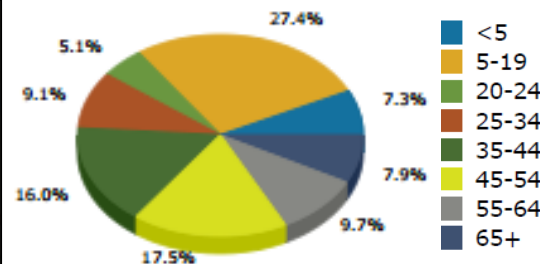


AREA DEMOGRAPHICS

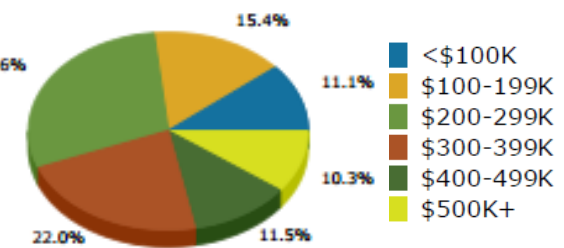
	Population	# of Households	Avg Household Income	Median Age
1 Mile	3,704	1,142	\$114,089	35
3 Miles	20,621	6,530	\$105,855	35
5 Miles	43,954	14,083	\$104,489	36



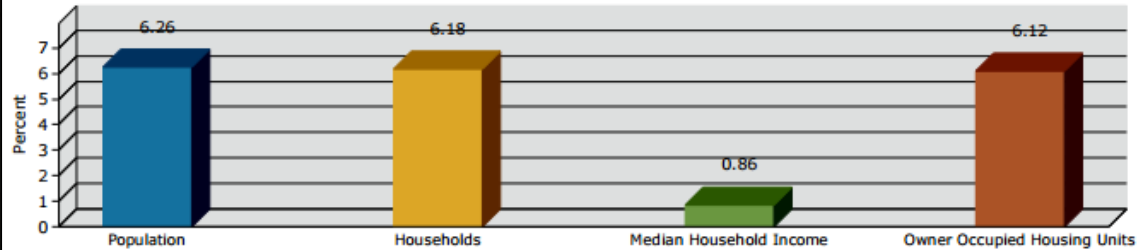
2016 Population by Age



2016 Home Value



2016-2021 Annual Growth Rate



Household Income

