



22  
MARCY AVENUE

**WILLIAMSBURG RETAIL UP TO 5,122 SF**  
**UNITS FROM 1,377 - 1,893 SF**

# 22 Marcy Avenue, Williamsburg

Between Hope Street & Metropolitan Avenue

## Available Space - Up to 5,122 SF Ground Level - 15' Ceiling Height

Unit A: 1,893 sf - Ground  
400 sf - Basement

Unit B: 1,852 sf - Ground  
400 sf - Basement

Unit C: 1,377 sf - Ground  
400 sf - Basement

Possession: Immediate

Rent: Upon request

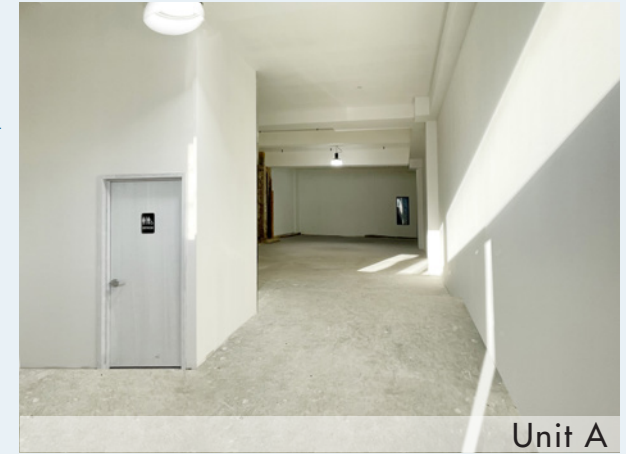
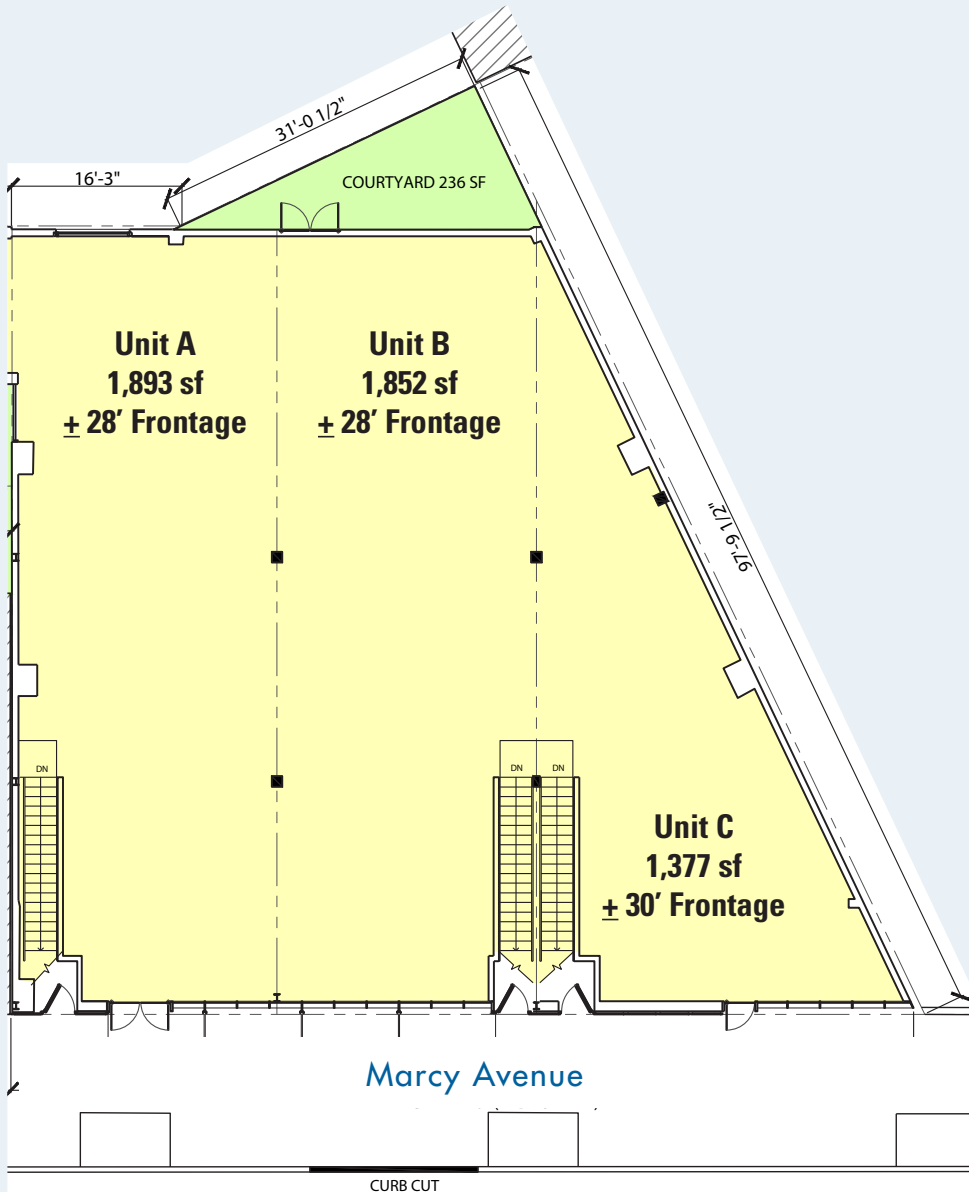
Frontage: 28' to 30'

## Comments

- Burgeoning neighborhood with rapidly growing population
- Centrally located between the Metropolitan Avenue/Lorimer Street **L** **G** station; and vicinity of **J** **M** **Z** subways
- Neighbors include: Whole Foods, Apple, Sweetgreen, Emmy Squared, Knitting Factory . . . . to name a few



# Floor Plan - Up to 5,122 SF Ground Level

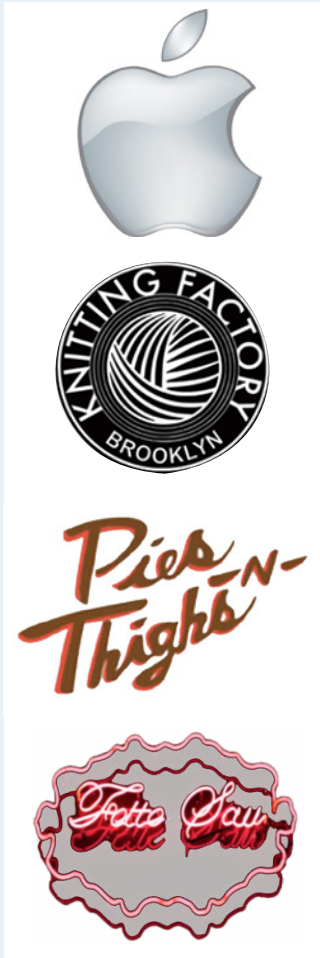
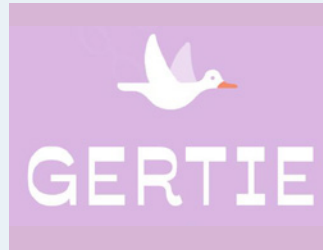
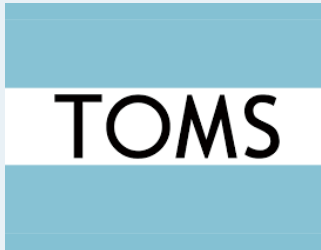


## Sample of Possible Space Uses

---



# Area Map



**Contact Exclusive Broker:**

**Ben Waller**

Licensed Associate Real Estate Broker

212.400.9515

[bwaller@absre.com](mailto:bwaller@absre.com)

**Mark Tergesen**

Licensed Associate Real Estate Broker

212.400.9528

[mtergesen@absre.com](mailto:mtergesen@absre.com)

**Anthony D'lorio**

Licensed Real Estate Salesperson

518.894.1605

[adiorio@absre.com](mailto:adiorio@absre.com)

