

ARVIDA EXECUTIVE CENTER

1800 NW CORPORATE BLVD BOCA RATON, FL 33431

OFFICE BUILDING



OFFERING SUMMARY

Available SF:	1,900 - 4,450 SF
Lease Rate:	\$20.00 - 22.50/SF NNN
Operating Expense:	\$12.76 SF includes electric & janitorial
Building Size:	28,080 SF
Renovated:	1996/2017
Zoning:	RB1

PROPERTY OVERVIEW

Great value in the heart of Midtown Boca! Space available at this boutique office building with easy access and good parking. Location is directly on Military Trail next door to Houston's and minutes from I-95 and Turnpike on Glades Road.

PROPERTY HIGHLIGHTS

- Building signage available
- Great visibility and signage
- 3 Stories / 2 Elevators
- New ownership
- Former Bank branch which includes: Drive-thru teller, Vault, Walk-up ATM alcove

PRESENTED BY:

JAY WHELCHEL
PRINCIPAL
561.939.6635
jwhelchel@whelchelpartners.com

KRISTY HARTOFILIS
PRESIDENT
561.939.6636 x3
khartofilis@whelchelpartners.com

**Executive
Summary**

ARVIDA EXECUTIVE CENTER

1800 NW CORPORATE BLVD BOCA RATON, FL 33431

OFFICE BUILDING



PRESENTED BY:

JAY WHELCHEL

PRINCIPAL

561.939.6635

jwhelchel@whelchelpartners.com

KRISTY HARTOFILIS

PRESIDENT

561.939.6636 x3

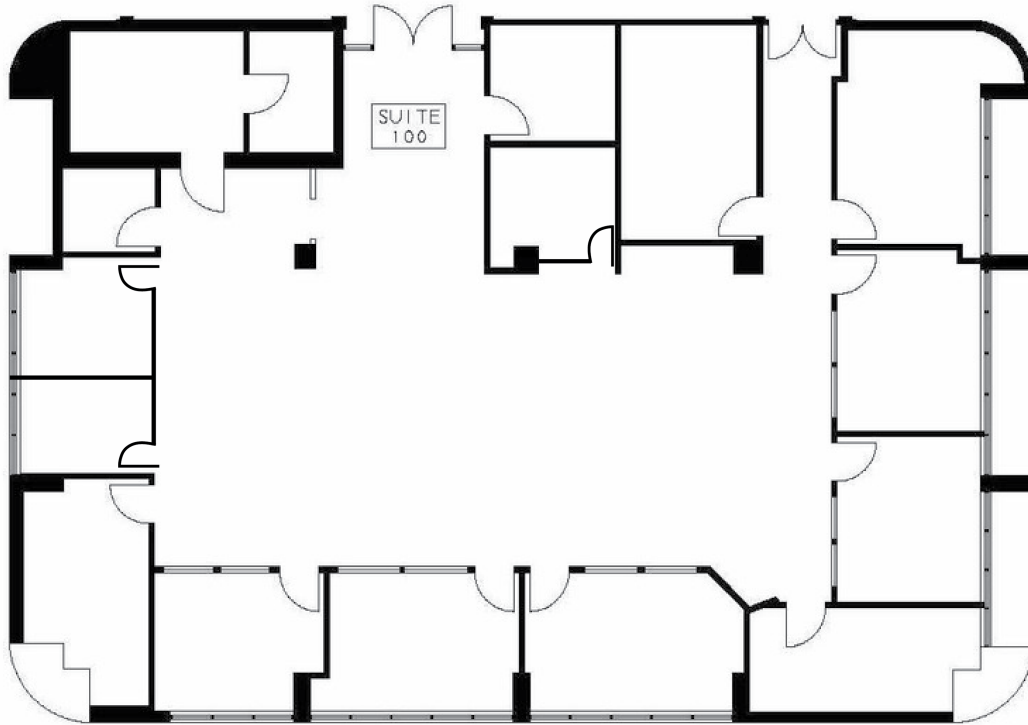
khartofilis@whelchelpartners.com

*Exterior
Photos*

ARVIDA EXECUTIVE CENTER

1800 NW CORPORATE BLVD BOCA RATON, FL 33431

OFFICE BUILDING



SUITE	SIZE (SF)	LEASE TYPE	LEASE RATE	AVAILABLE
Suite 100	4,450 SF	NNN	\$22.50 SF/yr	September 1, 2019
Suite 100 (A)	1,900 SF	NNN	\$22.50 SF/yr	September 1, 2019
Suite 100 (B)	2,550 SF	NNN	\$22.50 SF/yr	September 1, 2019

PRESENTED BY:

JAY WHELCHEL

PRINCIPAL

561.939.6635

jwhelchel@whelchelpartners.com

KRISTY HARTOFILIS

PRESIDENT

561.939.6636 x3

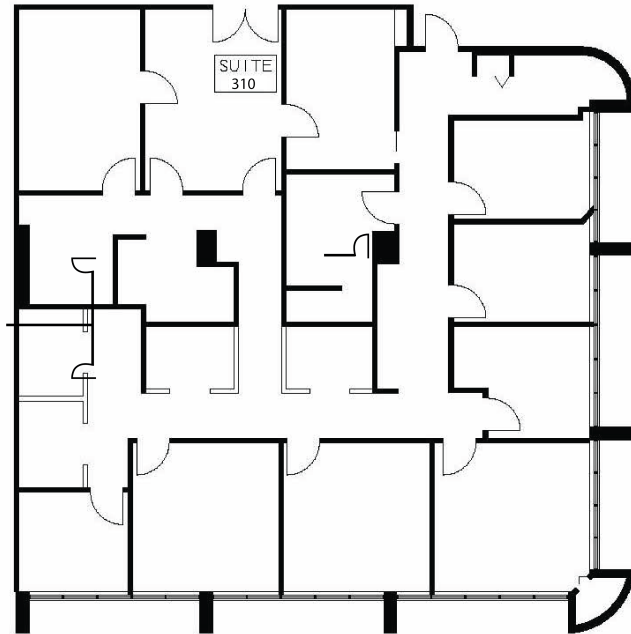
khartofilis@whelchelpartners.com

**Available
Spaces**

ARVIDA EXECUTIVE CENTER

1800 NW CORPORATE BLVD BOCA RATON, FL 33431

OFFICE BUILDING



SUITE	SIZE (SF)	LEASE TYPE	LEASE RATE	AVAILABLE
Suite 310	3,434 SF	NNN	\$20.00 SF/yr	March 1, 2020

PRESENTED BY:

JAY WHELCHEL
PRINCIPAL
561.939.6635
jwhelchel@whelchelpartners.com

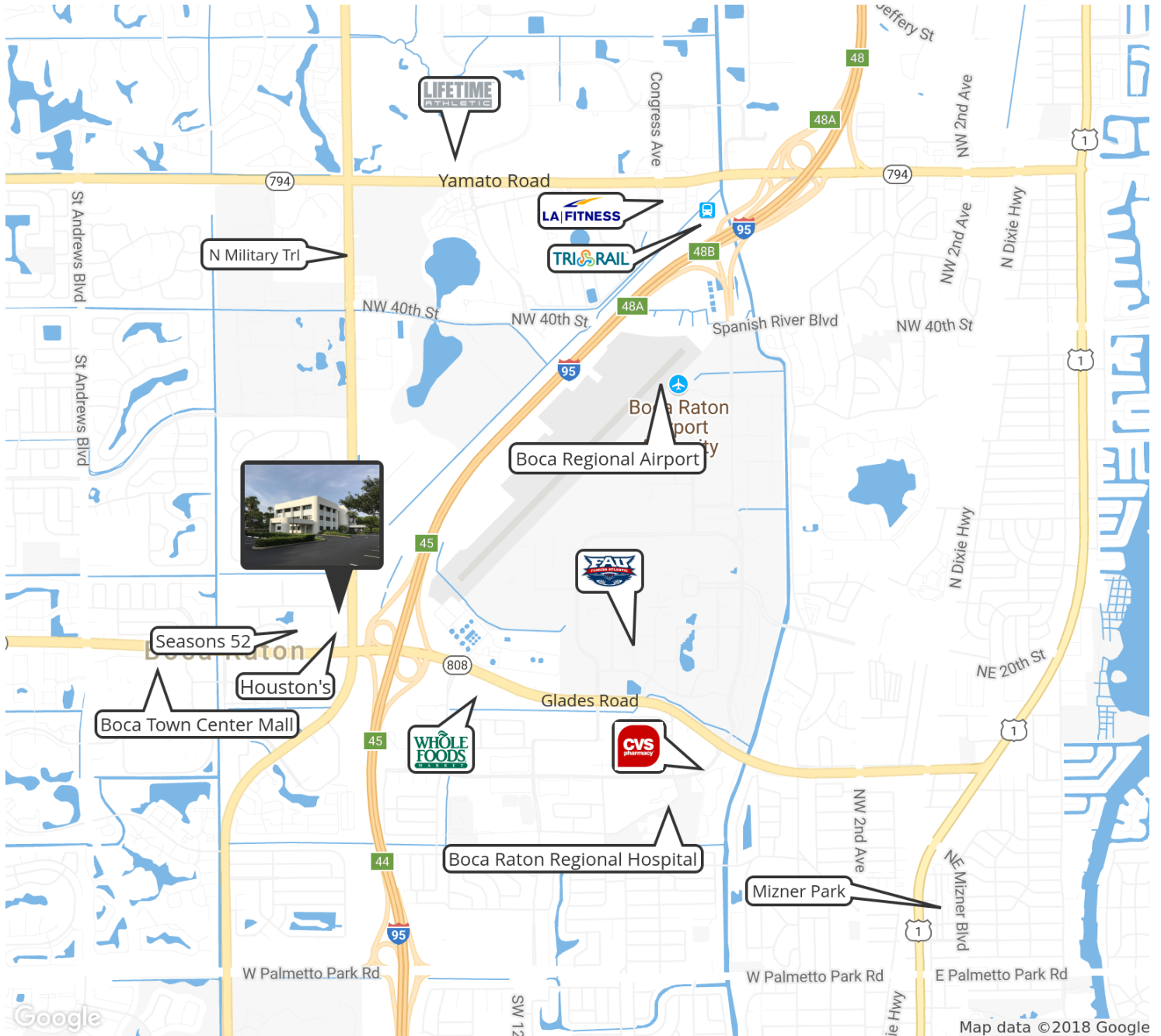
KRISTY HARTOFILIS
PRESIDENT
561.939.6636 x3
khartofilis@whelchelpartners.com

Available Spaces

ARVIDA EXECUTIVE CENTER

1800 NW CORPORATE BLVD BOCA RATON, FL 33431

OFFICE BUILDING



PRESENTED BY:

JAY WHELCHEL

PRINCIPAL

561.939.6635

jwhelchel@whelchelpartners.com

KRISTY HARTOFILIS

PRESIDENT

561.939.6636 x3

khartofilis@whelchelpartners.com

Retailer Map