



LISTING DATA

LAND AVAILABLE : 0.935±acres

PROPERTY TYPE : Industrial Land

COMMENTS:

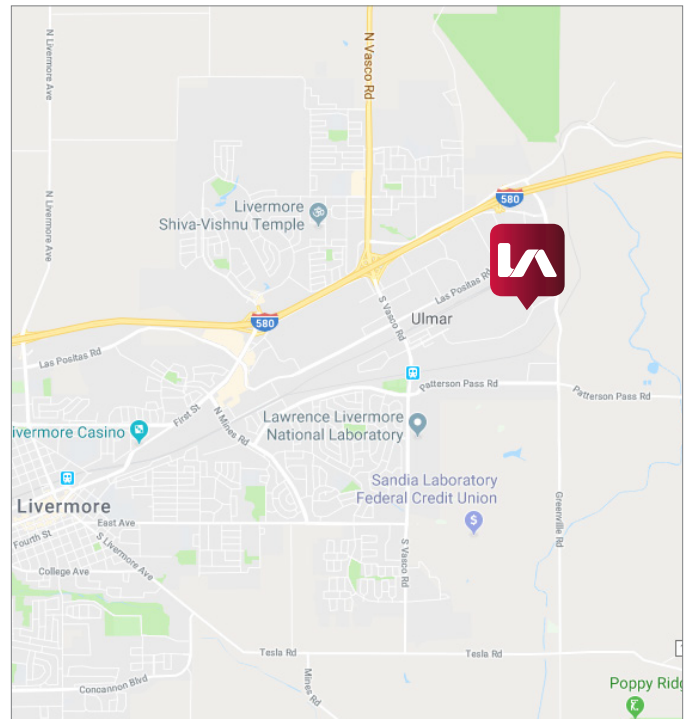
- At Livermore's I-580 and Greenville Road exit
- Business park - street infrastructure in place
- Adjacent to new buildings
- Full range of commercial services being developed nearby
- Very rare lot to build your own facility

ECONOMIC DATA

FOR SALE: \$692,386 (\$17/SF)

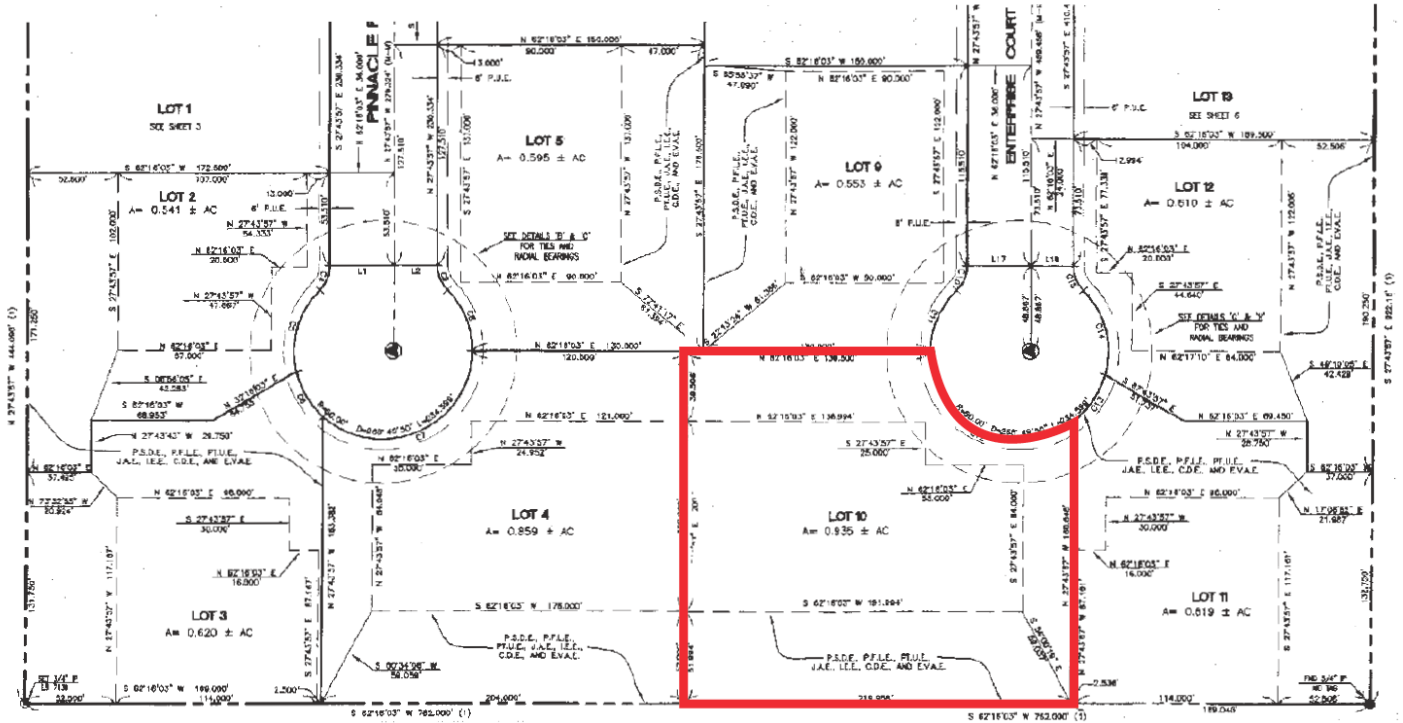
Sean Offers, SIOR
soffers@lee-associates.com
D 925.737.4159

Brett Holden
bholden@lee-associates.com
D 925.737.4141



All information furnished regarding property for sale, rental or financing is from sources deemed reliable, but no warranty or representation is made to the accuracy thereof and same is submitted to errors, omissions, change of price, rental or other conditions prior to sale, lease or financing or withdrawal without notice. No liability of any kind is to be imposed on the broker herein.

PARCEL MAP



Sean Offers, SIOR
soffers@lee-associates.com
D 925.737.4159

Brett Holden
bholden@lee-associates.com
D 925.737.4141

All information furnished regarding property for sale, rental or financing is from sources deemed reliable, but no warranty or representation is made to the accuracy thereof and same is submitted to errors, omissions, change of price, rental or other conditions prior to sale, lease or financing or withdrawal without notice. No liability of any kind is to be imposed on the broker herein.