

+2,400 SF INDUSTRIAL CONDO

**9346 GALENA STREET, SUITE F
JURUPA VALLEY, CA 92509**

FOR SALE



FEATURES:

- Industrial Condominium Near the 60 Freeway
- High End Restrooms with Granite Finishes
- 12' x 14' Ground Loading Door
- 225 AMP Panel (277/480v) - Verify
- 16' Clear Height
- .33/GPM Fire Sprinkler System
- 20 Free Surface Parking Spaces
- Exterior Park Lighting



\$166.25/SF

CONTACT:

**TOBY TEWELL
951.276.3662**

**TTEWELL@LEERIVERSIDE.COM
CALBRE# 01822772**

WWW.LEE-ASSOCIATES.COM

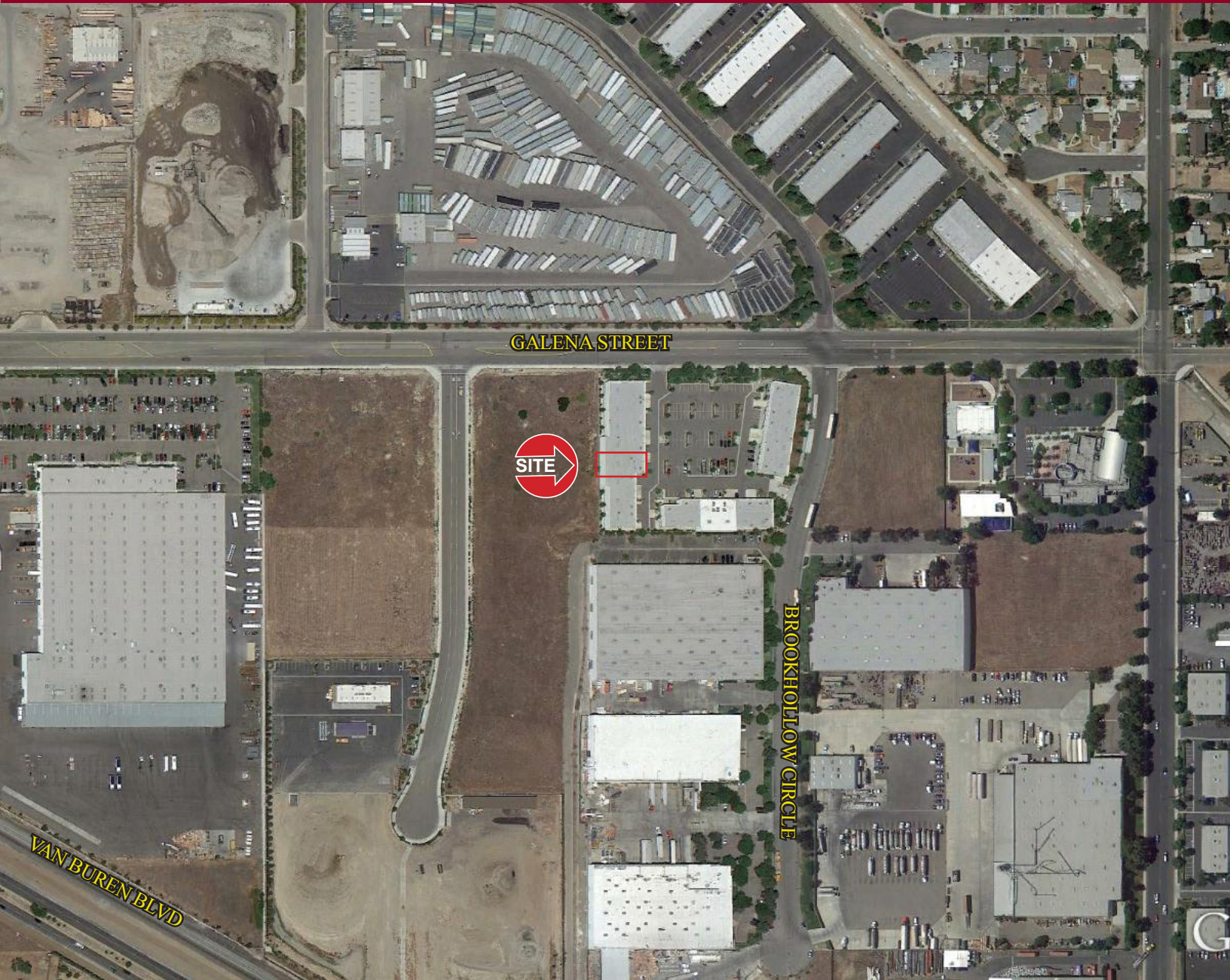


No warranty or representation has been made to the accuracy of the foregoing information. Terms of sale or lease and availability are subject to change or withdrawal without notice. Lee & Associates Commercial Real Estate Services, Inc. - Riverside. 4193 Flat Rock Drive, Suite 100, Riverside, CA 92505 | Corporate ID# 01048055

+2,400 SF INDUSTRIAL CONDO

**9346 GALENA STREET, SUITE F
JURUPA VALLEY, CA 92509**

FOR SALE



CONTACT:

**TOBY TEWELL
951.276.3662**

**TTEWELL@LEERIVERSIDE.COM
CALBRE# 01822772**

WWW.LEE-ASSOCIATES.COM

\$166.25/SF

**LEE &
ASSOCIATES**
COMMERCIAL REAL ESTATE SERVICES

No warranty or representation has been made to the accuracy of the foregoing information. Terms of sale or lease and availability are subject to change or withdrawal without notice. Lee & Associates Commercial Real Estate Services, Inc. - Riverside. 4193 Flat Rock Drive, Suite 100, Riverside, CA 92505 | Corporate ID# 01048055