



# COMMERCIAL REAL ESTATE CONSULTANTS

279 EAST 5900 SOUTH, MURRAY, UTAH 84107



## Property Information

- Suite 200: 1,900 RSF
- Monument Signage Available
- Total Building: 12,566 RSF
- Fiber Available
- Easy Access to I-15 and I-215
- Adjacent to TOSH and Close Proximity to IMC Hospital

**LEASE RATE**  
**\$19.50/SF YEAR FULL SERVICE**

## Demographics

|                       | 1 Mile   | 3 Mile   | 5 Mile   |
|-----------------------|----------|----------|----------|
| Population            | 14,574   | 135,656  | 367,628  |
| Households            | 5,728    | 53,785   | 134,737  |
| Avg. Household Income | \$57,144 | \$55,523 | \$59,609 |

## Traffic Counts

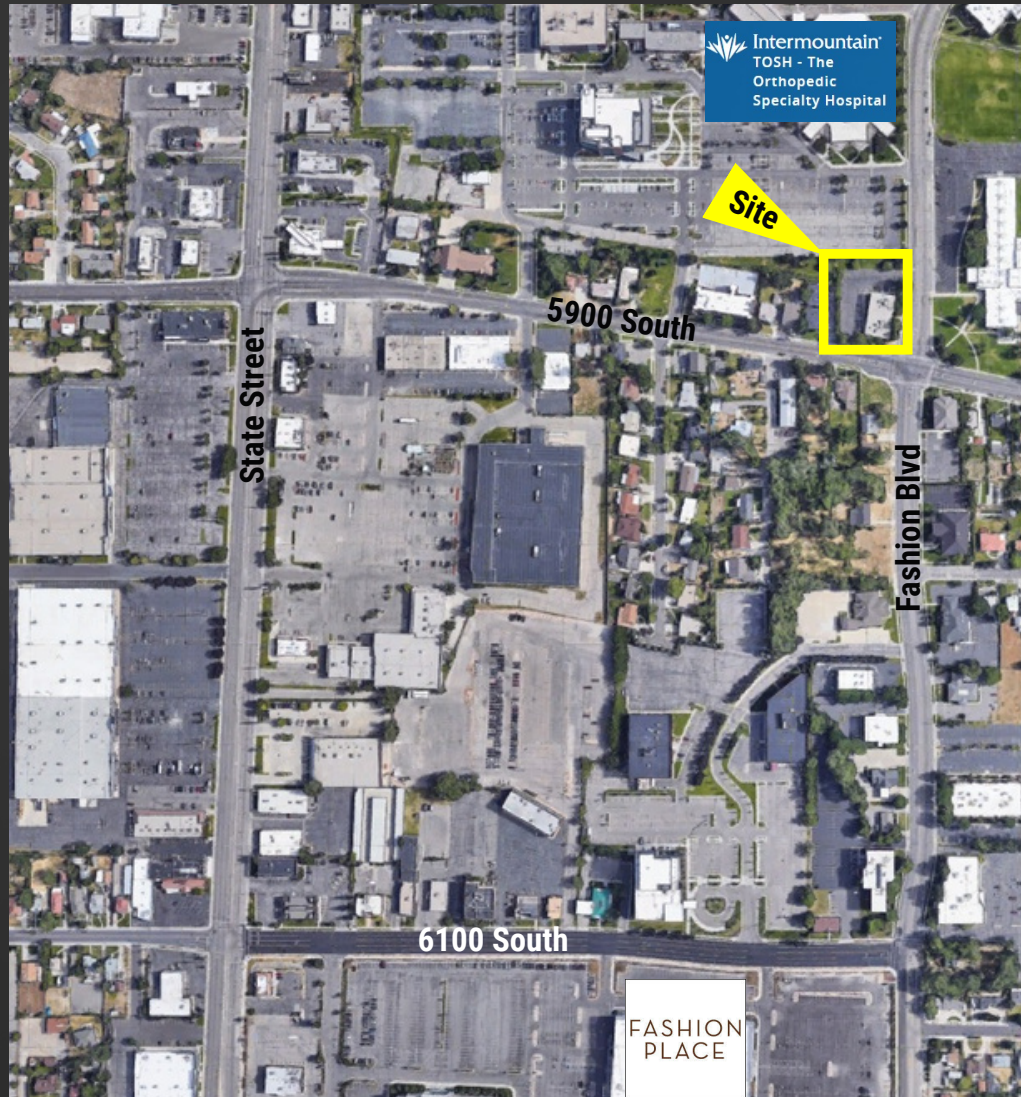
Fashion Blvd.: 10,730 Annual Average Daily Traffic  
 5900 South: 10,590 Annual Average Daily Traffic

# 801.617.1700

**KELLEN KONCAR**  
KELLEN.KONCAR@CRCNATIONWIDE.COM

**DANEILE SNELLING**  
DANEILE.SNELLING@CRCNATIONWIDE.COM





This information is given with the understanding that all negotiations and/or real estate activity related to the property described above shall be conducted through this cRc Nationwide office. The above information while not guaranteed, was obtained from sources we believe to be reliable.

**CONTACT**  
**801.617.1700**

**KELLEN KONCAR | KELLEN.KONCAR@CRCNATIONWIDE.COM**  
**DANEILE SNELLING | DANEILE.SNELLING@CRCNATIONWIDE.COM**