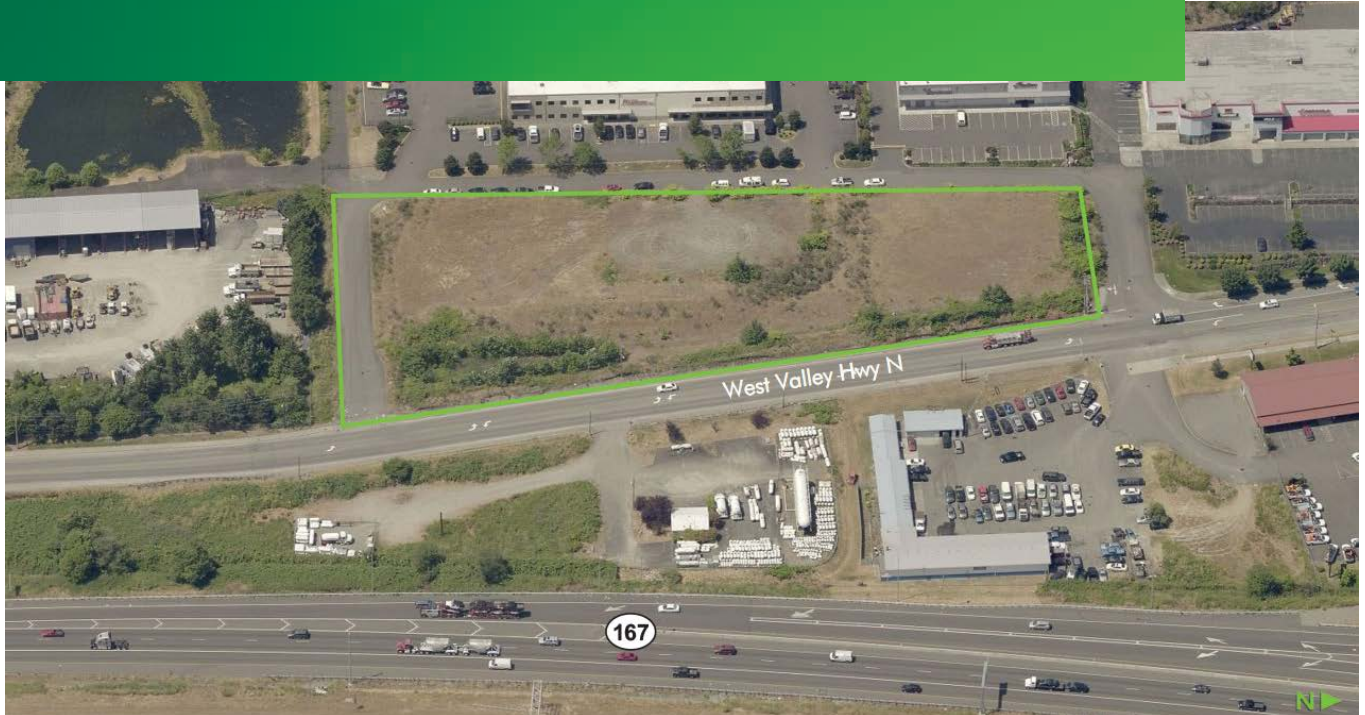


AVAILABLE

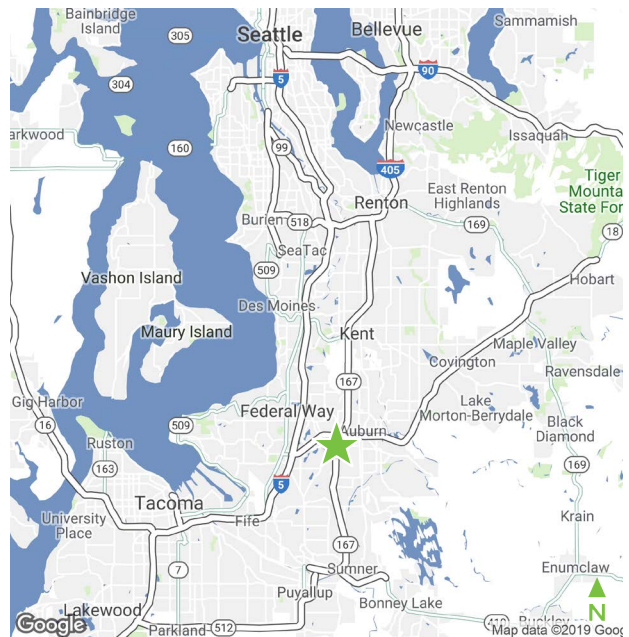
34621 W VALLEY HWY S

ALGONA, WA 98001



PROPERTY OVERVIEW

- + ±3.18 acres
- + For sale option: \$2,600,000 (\$18.50 PSF) or ground lease option: \$0.20 PSF
- + Build to suit option
- + Parcel numbers:
 - 335640-7390
 - 335640-7932
 - 335640-7931
 - 335640-0516
 - 335640-0511
- + C-3 zoning (Heavy Commercial), City of Algona
- + Traffic counts: 13,380 ADT on West Valley Hwy N and 83,000 ADT on Hwy 167
- + Call for further details



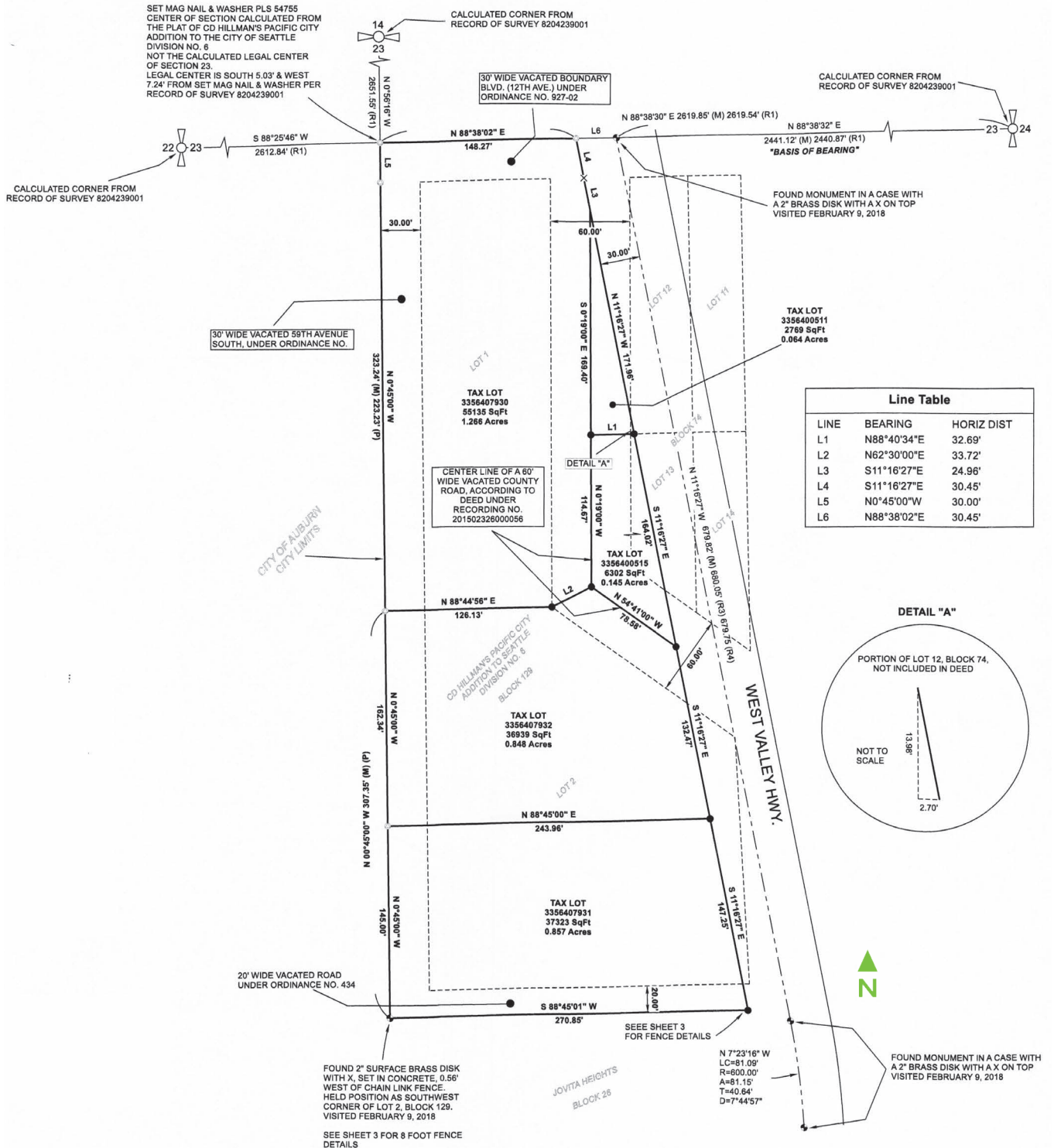
www.cbre.us/lsgseattle

CBRE

AVAILABLE 34621 W VALLEY HWY S

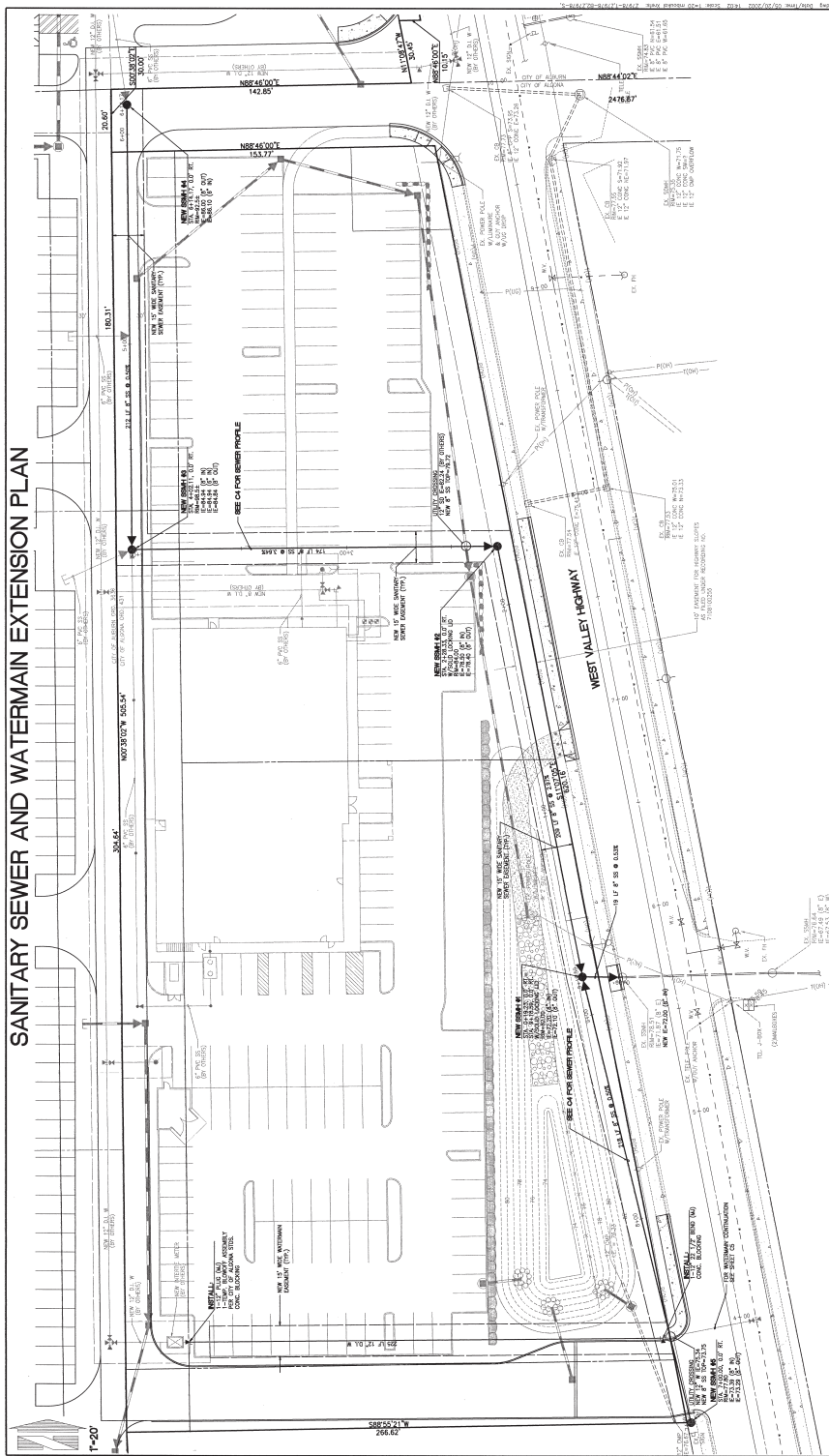


SITE SURVEY





CONCEPTUAL SITE



AVAILABLE 34621 W VALLEY HWY S

ALGONA, WA 98001



AERIAL MAP



CONTACT US

TERESA PATTON

Vice President
+1 253 596 0043
teresa.patton@cbre.com

MICHAEL OTA

Associate
+1 253 596 0031
michael.ota@cbre.com

ZACHARY OTA

Associate
+1 253 596 0032
zachary.ota@cbre.com

CBRE, INC

1201 Pacific Avenue
Suite 1502
Tacoma, WA 98402

© 2018 CBRE, Inc. All rights reserved. This information has been obtained from sources believed reliable, but has not been verified for accuracy or completeness. You should conduct a careful, independent investigation of the property and verify all information. Any reliance on this information is solely at your own risk. CBRE and the CBRE logo are service marks of CBRE, Inc. All other marks displayed on this document are the property of their respective owners. Photos herein are the property of their respective owners. Use of these images without the express written consent of the owner is prohibited. RB 07.23.19