



RAMSTAD SHOP 3

Interstate 29 - Exit 86

Brand New Industrial Building for Lease



47172 Haylie Street
Sioux Falls, SD 57107



size

13,000 square feet



price

\$5.75 per sqft (NNN)



details

- 100' x 120' building dimensions
- 20' sidewalls
- 2 overhead doors (16' x 14')
- One 9' dock door with bumpers
- 3-phase electrical to building, single phase in building
- Natural gas radiant heat
- 5 offices with conference room.
- Office mezzanine can be used as office space or sleeping quarters (with additional restroom/shower)
- Storage yard possible north of building
- Build depth can be extended to 220'



layout

100' x 120' shop area

2-level office area
(2,000 sqft total office)



location

Building is located in the Crooks Industrial Park at Exit 86 off Interstate 29.

Information deemed reliable but not guaranteed.



Lake Lorraine | 2571 Westlake Drive #100
Sioux Falls, South Dakota 57106
VBclick.com | 605.361.8211



605.376.0127
Ryan@VBclick.com

LOCATION MAP



Boxy's
PAINT & BODY

NDE
THE VERTICAL MIXER SPECIALISTS



**CHASE
DRILLING**

SDI Swiden
Distributing, Inc.
Your audio and video distribution experts!

**SAFE
-N-
SECURE**

US United
Suppliers

KWIK KERB

**COUNTER
ELEMENTS**

MASTER BLASTER
PRESSURE WASHERS

Cottonwood Avenue

TIMPTE

**Olander
Trucking
Inc.**

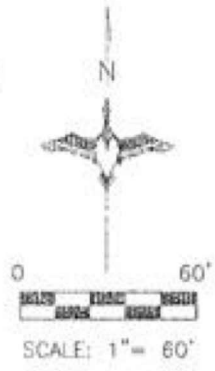
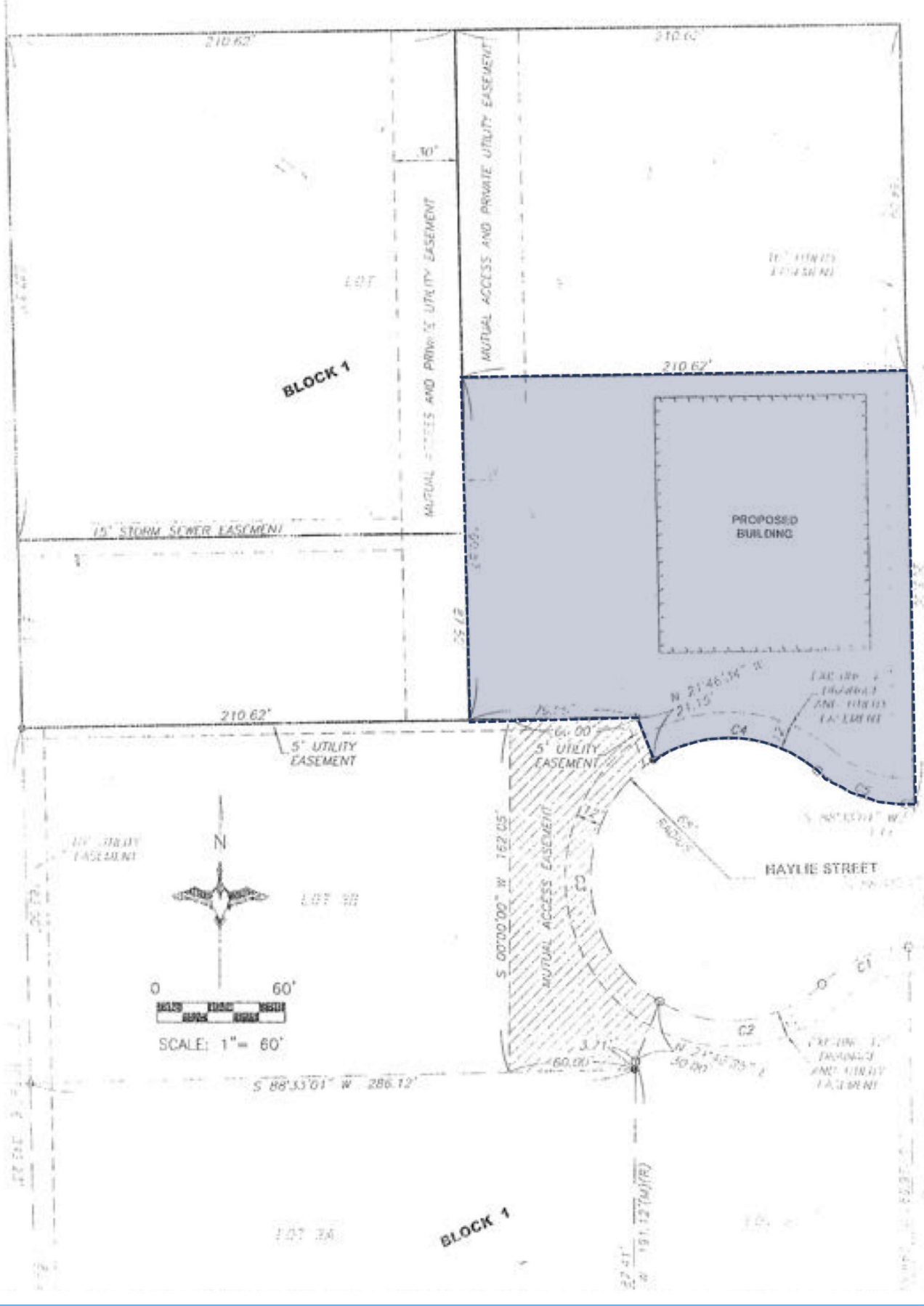
LCI
LIMOGES CONSTRUCTION, INC.

Renner
EQUIPMENT

258th Street



Exit 86



BLOCK 1

PROPOSED BUILDING

HAYLIE STREET

BLOCK 1

5' UTILITY EASEMENT

5' UTILITY EASEMENT

MUTUAL ACCESS AND PRIVATE UTILITY EASEMENT

MUTUAL ACCESS AND PRIVATE UTILITY EASEMENT

5' UTILITY EASEMENT

MUTUAL ACCESS EASEMENT

10' STORM SEWER EASEMENT

10' STORM SEWER EASEMENT

210.62'

210.62'

210.62'

210.62'

S 00°00'00" W 162.05'

S 88°33'01" W 286.12'

N 21°46'34" W 21.15'

N 21°46'34" W 21.15'

S 88°33'01" W 1.12'

N 21°46'34" W 30.00'

N 21°46'34" W 30.00'

N 21°46'34" W 30.00'

N 21°46'34" W 30.00'

N 21°46'34" W 30.00'

BUILDING SCHEMATIC

