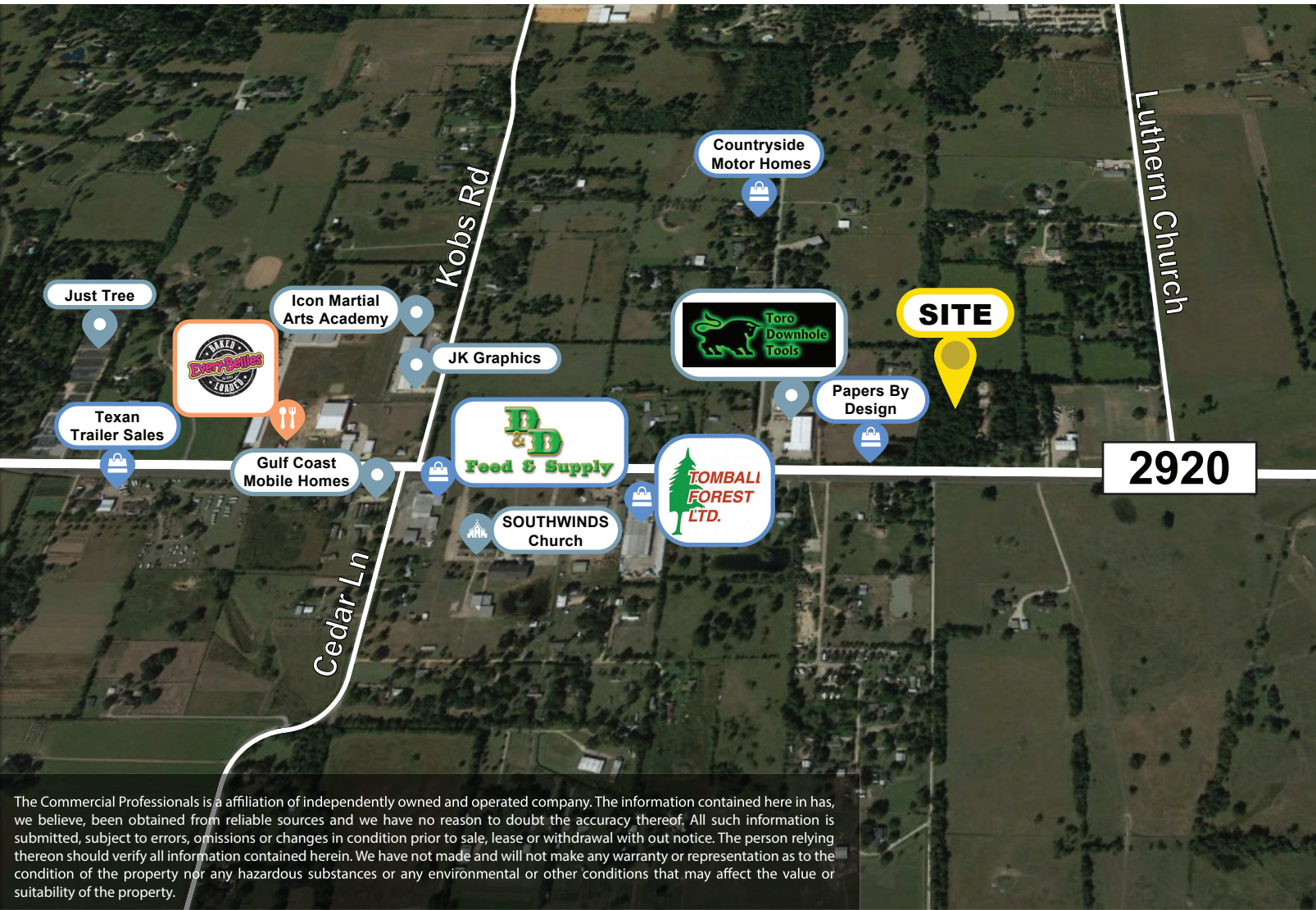


**FOR
SALE**

LAND AVAILABLE

+/- 3.59 ACRES, TBD FM 2920 | FM 2920, TOMBALL, TX 77377



**+/- 263FT
OF FRONTAGE
ON FM 2920,
MINUTES FROM
GRAND PARKWAY**

The Commercial Professionals is a affiliation of independently owned and operated company. The information contained here in has, we believe, been obtained from reliable sources and we have no reason to doubt the accuracy thereof. All such information is submitted, subject to errors, omissions or changes in condition prior to sale, lease or withdrawal with out notice. The person relying thereon should verify all information contained herein. We have not made and will not make any warranty or representation as to the condition of the property nor any hazardous substances or any environmental or other conditions that may affect the value or suitability of the property.

**THE COMMERCIAL
PROFESSIONALS**

Remember, "It Pays to work with a Professional!"

TheCommercialProfessionals.com

1095 Evergreen Circle, Suite 200, The Woodlands, TX, 77380

**Call
281.766.4352**

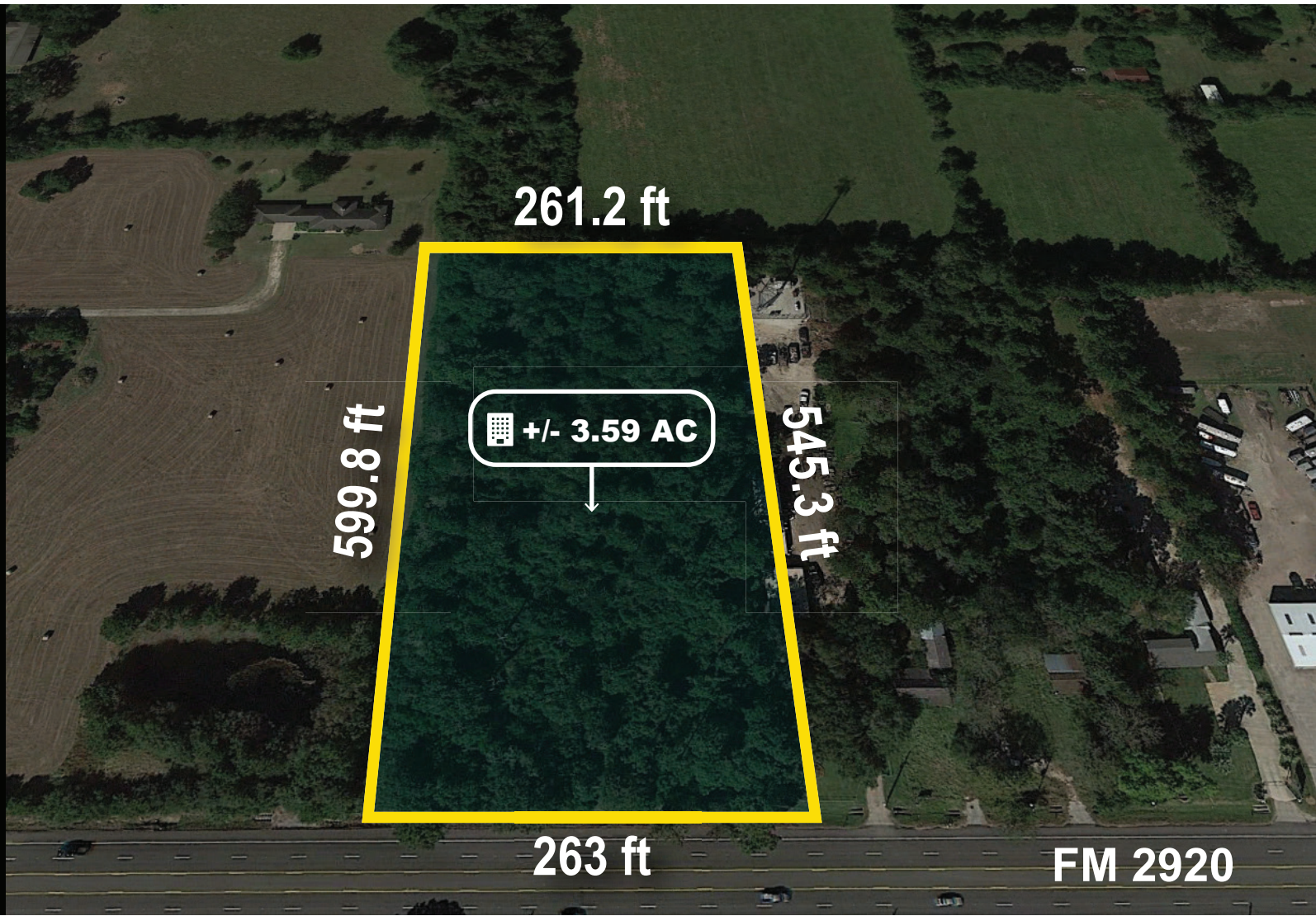
**FOR
SALE**

LAND AVAILABLE

+/- 3.59 ACRES, TBD FM 2920 | FM 2920, TOMBALL, TX 77377

DESCRIPTION

This +/- 3.59 acre property is located on busy FM 2920 in Tomball, TX. This commercial property offers +/-263 feet of frontage on FM 2920 and is just minutes away from the Grand Parkway. The property has a nice rectangular shape and is not located in a flood plain. Other area businesses include D&D Feed Supply & Toro Downhole Tools. Due to the properties high traffic counts, great frontage and location, this property is ideal for retail concepts, industrial warehouse and more.



**THE
COMMERCIAL
PROFESSIONALS**

Remember, "It Pays to work with a Professional!"

TheCommercialProfessionals.com

8505 Technology Forest Place, # 501, The Woodlands, TX, 77381

**Call
281.766.4352**



The Commercial Professionals Team



Rachael Peters
Commercial Realtor

✉ Rpeters@TPG-Realty.com

☎ 281.766.4352

📱 903.570.1729



Ricardo Rodriguez
Commercial Realtor

✉ Ricardo@TPG-Realty.com

☎ 281.766.4352

📱 832.656.4526



Lindsey Rafferty
Client Support Manager

✉ LRafferty@TPG-Realty.com

☎ 281.766.4352

📱 832.419.7087



Lance Langenhoven
Broker

✉ Lance@TPG-Realty.com

☎ 281.766.4352

📱 832.483.8655

