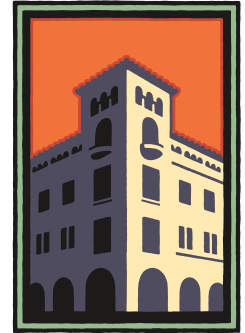


FOR LEASE

405 Waverley Street, Palo Alto, CA



**PREMIER
PROPERTIES**
COMMERCIAL
REAL ESTATE



DOWNTOWN PALO ALTO OFFICE FOR LEASE

±1,653 SQ. FT. - Available Immediately

Three (3) Reserved On-Site Parking Spaces

BRAD EHIKIAN
Partner

Phone: 650.618.3001

brad.ehikian@prprop.com
dre license #01736391

JON GOLDMAN
Partner

Phone: 650.618.3003

jon.goldman@prprop.com
dre license #01295503

JESSE EBNER
Associate

Phone: 650.618.3017

jesse.ebner@prprop.com
dre license #02055989

FOR PROPERTY DETAILS AND MORE LISTINGS

PremierPaloAlto.com

FOR LEASE

405 Waverley Street, Palo Alto, CA



**PREMIER
PROPERTIES**
COMMERCIAL
REAL ESTATE

PROPERTY DESCRIPTION

- Nicely Renovated, Modern Ground Floor Office
- Excellent Location in Downtown Palo Alto
- Open Office Layout with One Large Conference Room
- Kitchenette and Private Restrooms
- Three (3) Reserved On-Site Parking Spaces
- Exposed Ceiling Framing and Polished Concrete Floors
- Surrounded by Downtown Restaurants and Amenities
- Walking Distance to Caltrain Station
- Available Immediately

Neither the property owner nor Premier Property Management make any representation or warranty with regard to the information contained within this advertising flyer and the information contained herein should not be relied upon for validity, accuracy, or completeness. Prior to submitting an offer, prospective purchasers or tenants should perform their own due diligence including consultation with their legal and tax counsel in order to arrive at an independent evaluation of the property.

BRAD EHIKIAN
Partner

Phone: 650.618.3001
brad.ehikian@prprop.com
dre license #01736391

JON GOLDMAN
Partner

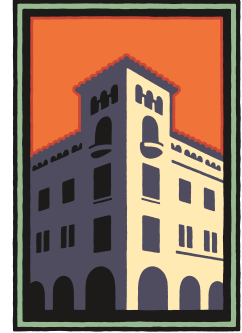
Phone: 650.618.3003
jon.goldman@prprop.com
dre license #01295503

JESSE EBNER
Associate

Phone: 650.618.3017
jesse.ebner@prprop.com
dre license #02055989

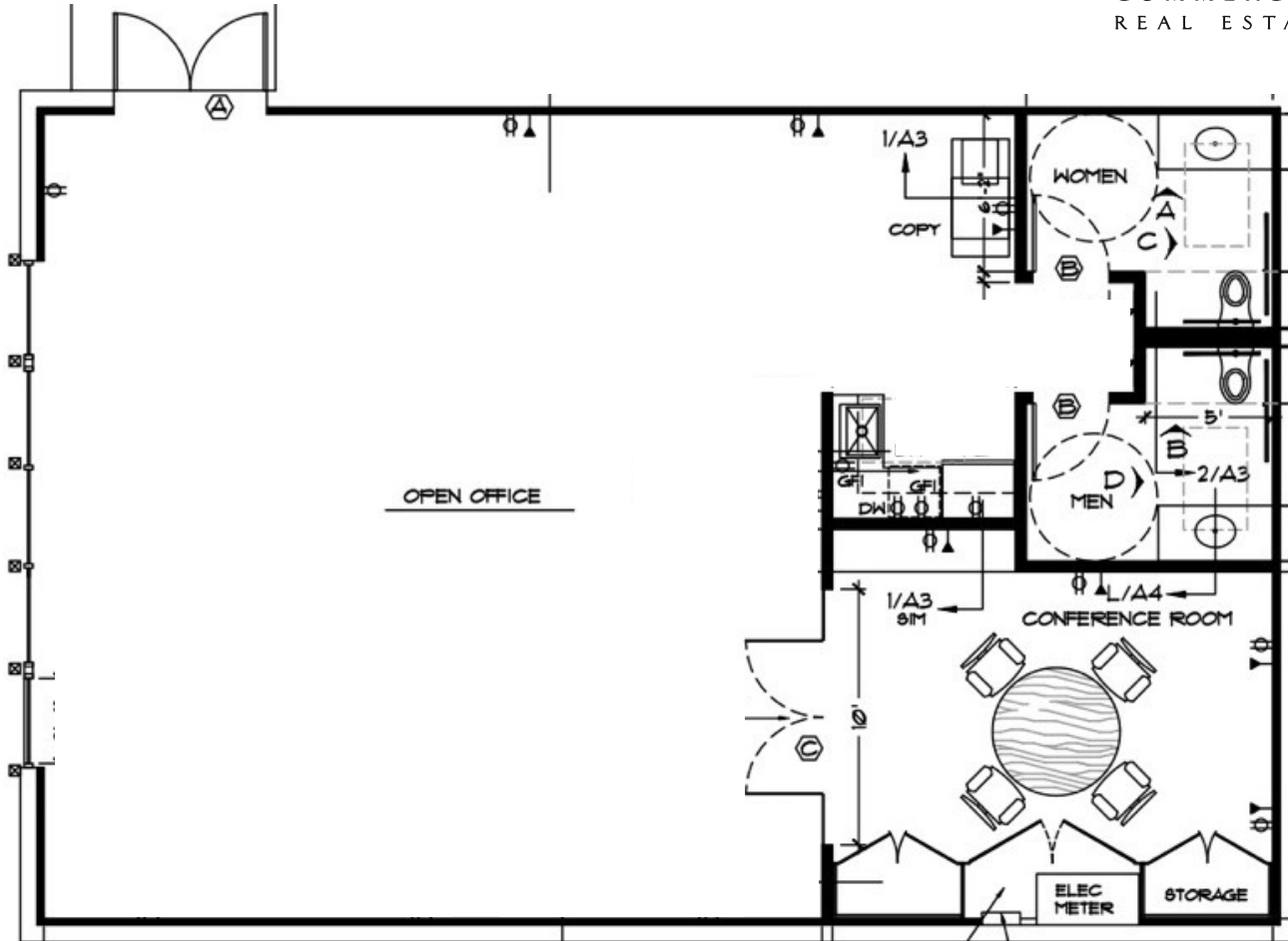
FOR LEASE

405 Waverley Street, Palo Alto, CA



**PREMIER
PROPERTIES**
COMMERCIAL
REAL ESTATE

FLOOR PLAN



May not be accurate / to scale

BRAD EHIKIAN
Partner

Phone: 650.618.3001
brad.ehikian@prprop.com
dre license #01736391

JON GOLDMAN
Partner

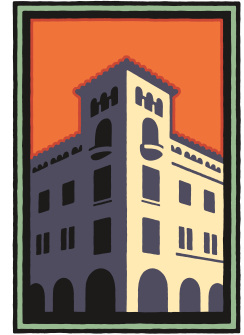
Phone: 650.618.3003
jon.goldman@prprop.com
dre license #01295503

JESSE EBNER
Associate

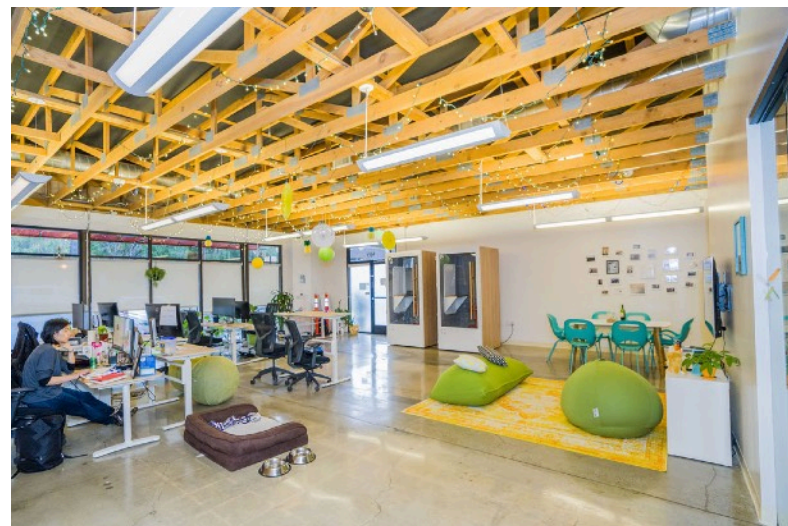
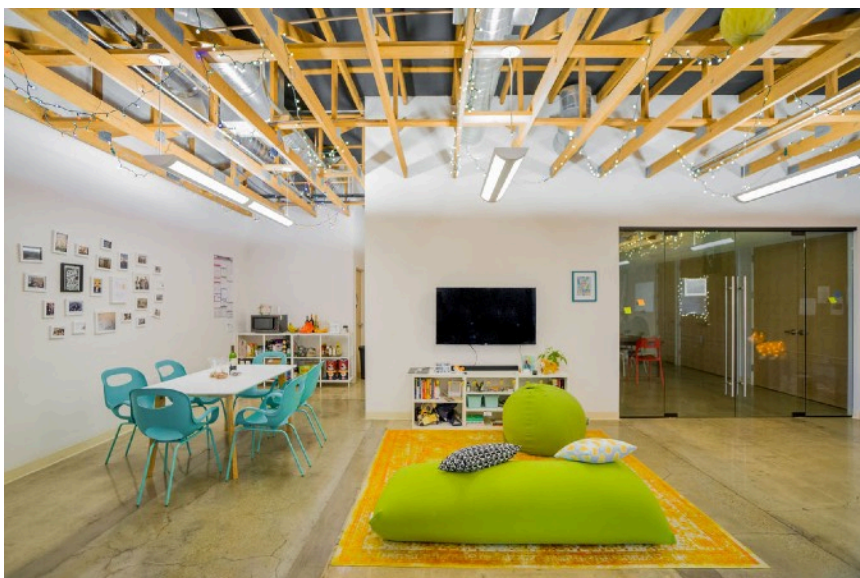
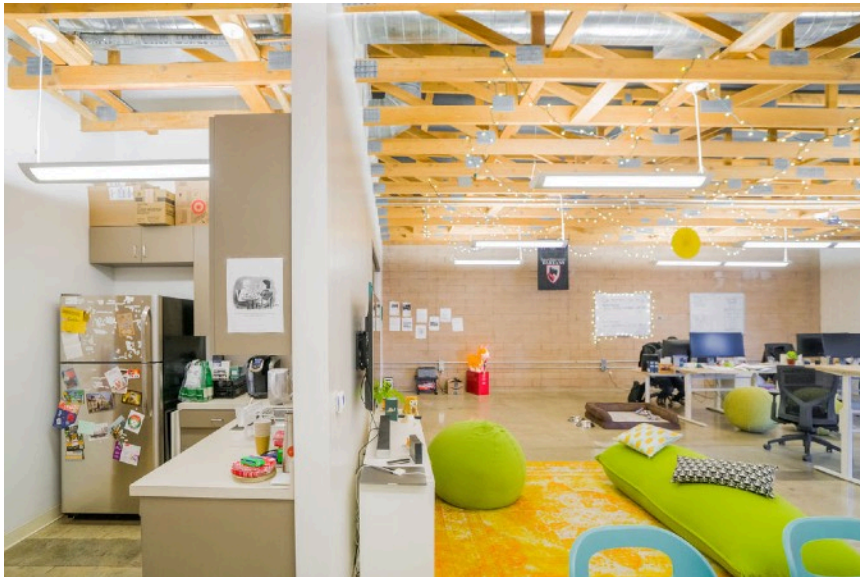
Phone: 650.618.3017
jesse.ebner@prprop.com
dre license #02055989

FOR LEASE

405 Waverley Street, Palo Alto, CA



**PREMIER
PROPERTIES**
COMMERCIAL
REAL ESTATE



BRAD EHIKIAN
Partner

Phone: 650.618.3001
brad.ehikian@prprop.com
dre license #01736391

JON GOLDMAN
Partner

Phone: 650.618.3003
jon.goldman@prprop.com
dre license #01295503

JESSE EBNER
Associate

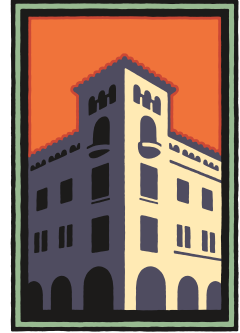
Phone: 650.618.3017
jesse.ebner@prprop.com
dre license #02055989

FOR PROPERTY DETAILS AND MORE LISTINGS

PremierPaloAlto.com

FOR LEASE

405 Waverley Street, Palo Alto, CA



**PREMIER
PROPERTIES**
COMMERCIAL
REAL ESTATE



BRAD EHIKIAN
Partner

Phone: 650.618.3001
brad.ehikian@prprop.com
dre license #01736391

JON GOLDMAN
Partner

Phone: 650.618.3003
jon.goldman@prprop.com
dre license #01295503

JESSE EBNER
Associate

Phone: 650.618.3017
jesse.ebner@prprop.com
dre license #02055989