



OLIVE
REAL ESTATE
GROUP, INC.

FOR LEASE
OFFICE SPACE

635-655 SOUTHPONTE COURT, COLORADO SPRINGS, CO 80906



PROPERTY INFORMATION

Building Size: 655 SF - 7,288 SF

Lot Size: 1.31 Acres

Zoning: OC

Available Space:

- Building 655 - Suite 100 - 990 SF - \$15.00/SF

Year Built: 1984

Parking: 40 spaces available

COMMENTS

- Just south of Downtown Colorado Springs corridor
- Backs up to open space
- Easy access to I-25 and the southwest part of town



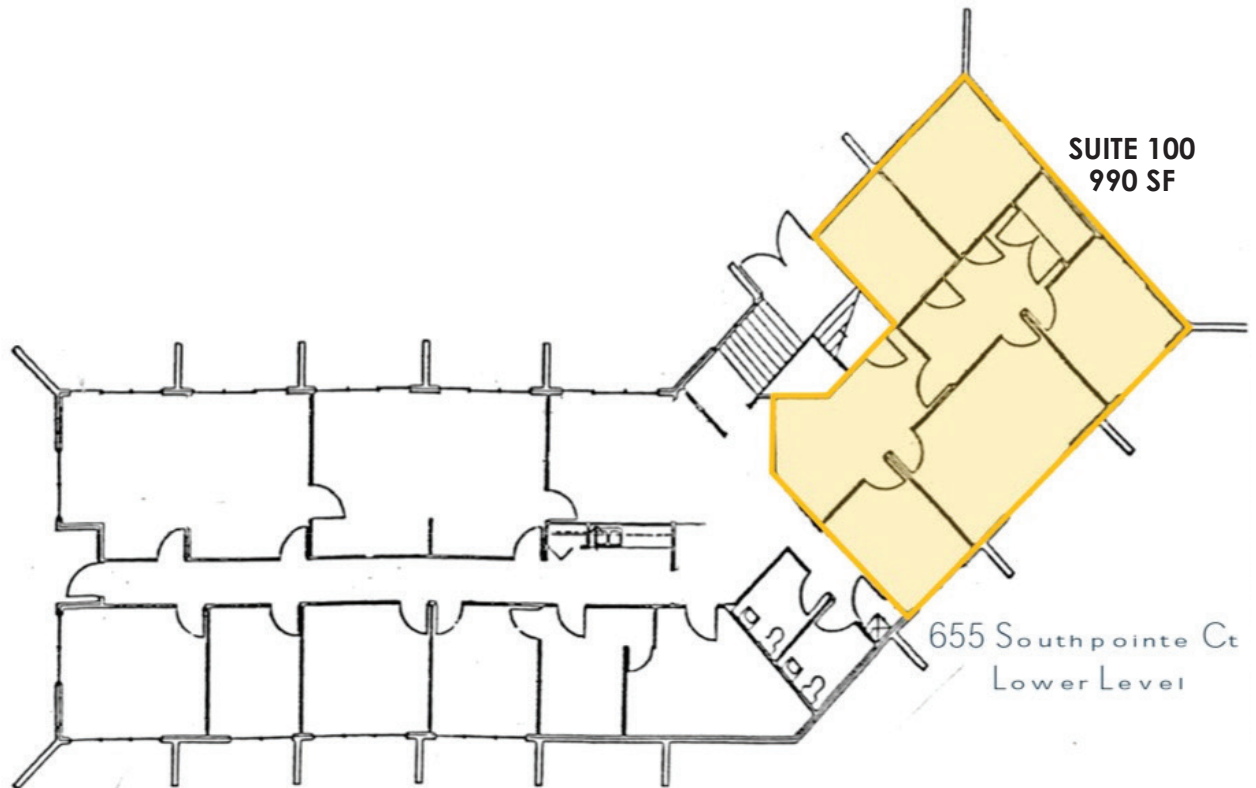
Alex Dumas
adumas@oliverreg.com

Jeremy Shirley
jeremys@oliverreg.com

102 N CASCADE AVE, SUITE 250, COLORADO SPRINGS, CO 80903 • t. 719.598.3000 f. 719.578.0089 www.oliverreg.com

Olive Real Estate Group, Inc. Copyright 2020. Reproductions are legally prohibited without written consent.
Information contained herein, while not guaranteed, is from sources we believe to be reliable. Prices, terms and information subject to change.

FOR LEASE



Alex Dumas
adumas@oliverreg.com

Jeremy Shirley
jeremys@oliverreg.com

102 N CASCADE AVE, SUITE 250, COLORADO SPRINGS, CO 80903 • t. 719.598.3000 f. 719.578.0089 www.oliverreg.com

Olive Real Estate Group, Inc. Copyright 2020. Reproductions are legally prohibited without written consent.
Information contained herein, while not guaranteed, is from sources we believe to be reliable. Prices, terms and information subject to change.