

±4,500 SF RETAIL SPACE AT DORAL SHOPS

11402 NW 41ST STREET | DORAL, FL



DANIEL SOLOMON, CCIM, MSRE

Principal

DanielSolomon@dkatz.com

(561) 869-4351

KAREN MAEROVITZ

Director of Leasing & Sales

KarenMaerovitz@dkatz.com

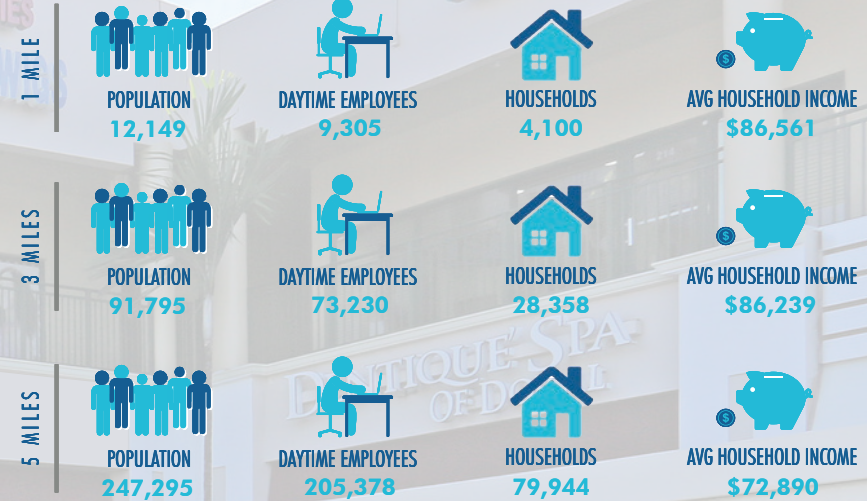
(305) 503-0417

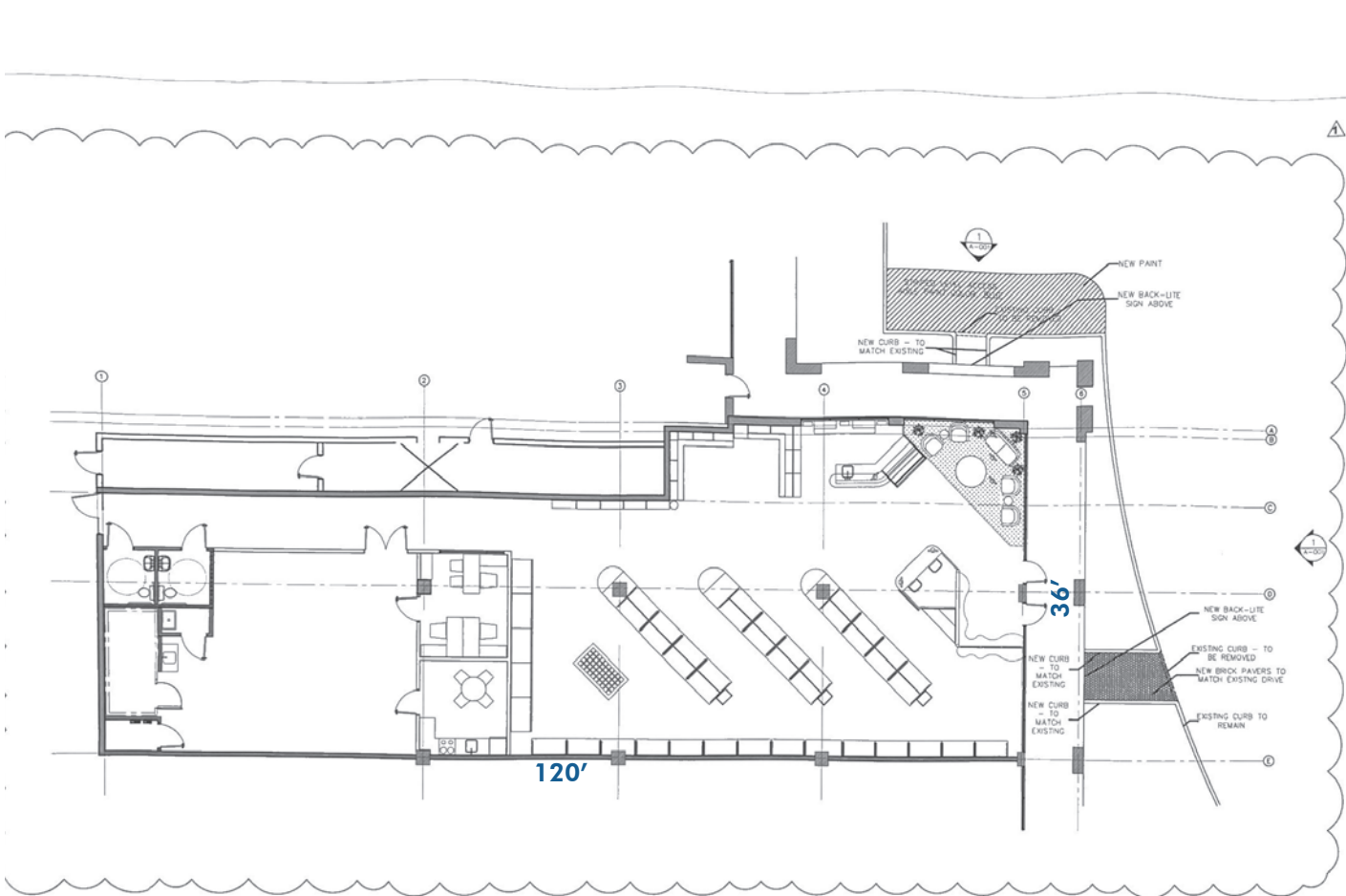
KATZ & ASSOCIATES

HIGHLIGHTS

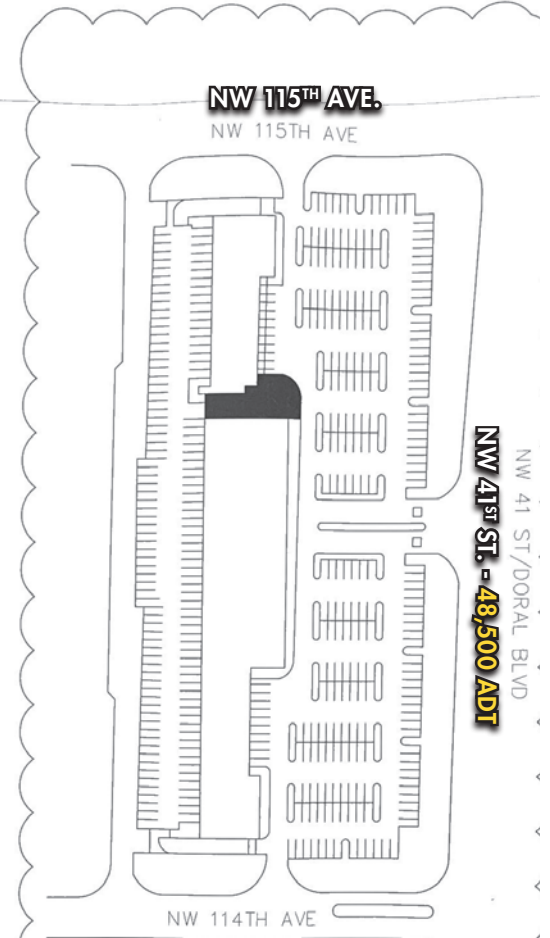
- ±4,500 SF retail space available
- Join:     
- Doral Shops is strategically located within the Doral office/retail submarket, one of Florida's highest growth markets
- Doral Boulevard is the area's main east-west thoroughfare and provides direct access from Florida's Turnpike, the Dolphin Expressway and Miami International Airport
- Ample parking is provided by the Property's surface level parking for retail tenants and additional rooftop parking mostly for the Property's office tenants

DEMOGRAPHICS





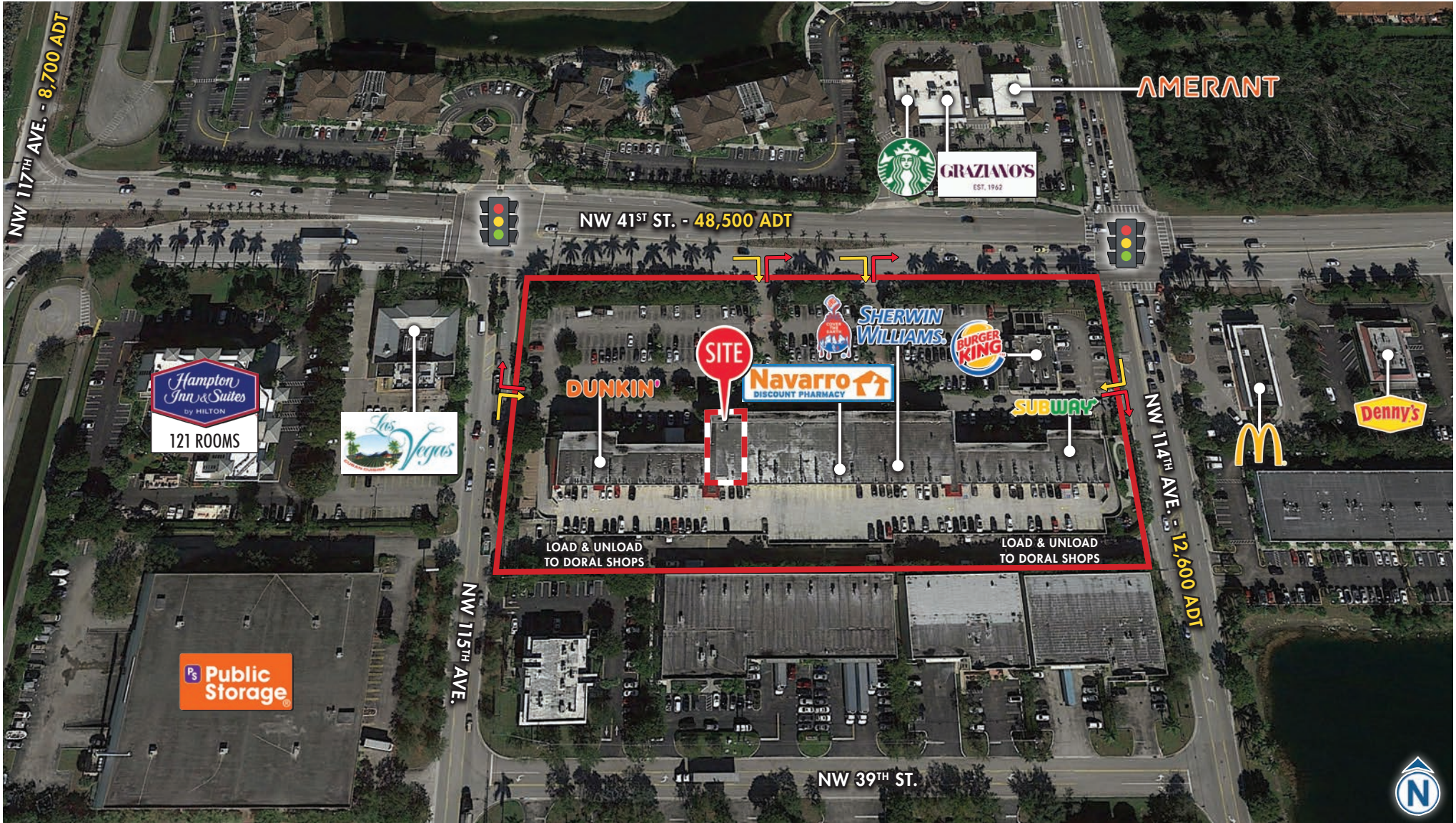
SITE PLAN
scale: 1/8" = 1'-0"



KEY PLAN







AERIAL | CLOSE-UP

11402 NW 41ST STREET
DORAL, FL

KATZ & ASSOCIATES



AERIAL | TRADE

11402 NW 41ST STREET
DORAL, FL