

BLACK CANYON CENTER

FOR LEASE

NEW OWNERSHIP

6.8/1,000 PARKING WITH 3/1,000 COVERED

10835 N 25TH AVENUE
I-17 JUST NORTH OF PEORIA AVENUE

LEASING TEAM

ASHLEY BROOKS
Senior Vice President
+1 602 735 1758
ashley.brooks@cbre.com

JASMINA SUBASIC
Client Services Specialist
+1 602 735 5262
jasmina.subasic@cbre.com





BUILDING FEATURES:

- » Class "A", Three-story Office building
- » 6.8/1,000 Parking with 3/1,000 Covered
- » Full Diamond Interchange at I-17 & Peoria Ave
- » KinderCare Facility On-Site
- » Building + Monument signage available
- » 2 story open air lobby

LOCATION FEATURES:

- » Easy Access to I-17, Labor Markets, Amenities, and Residential Developments

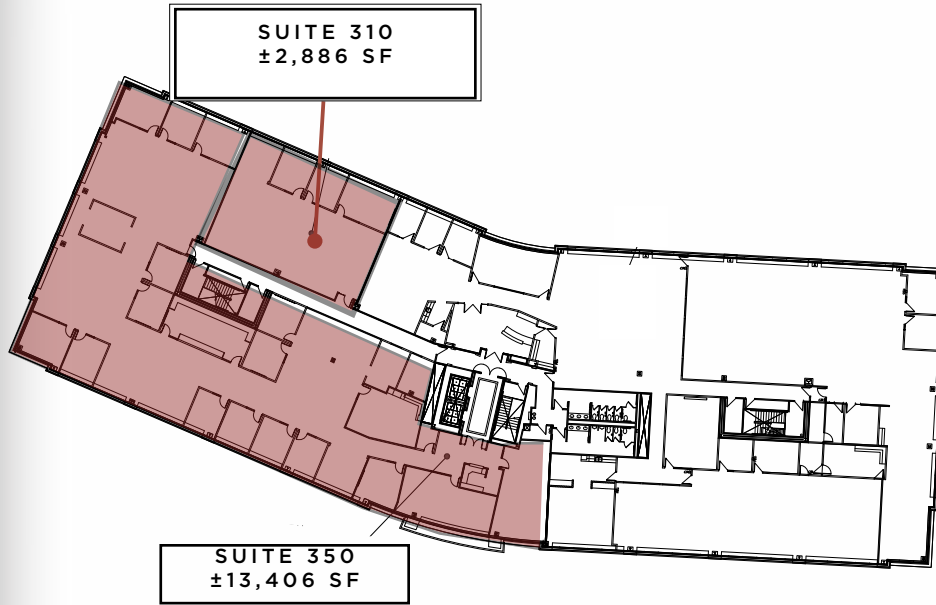




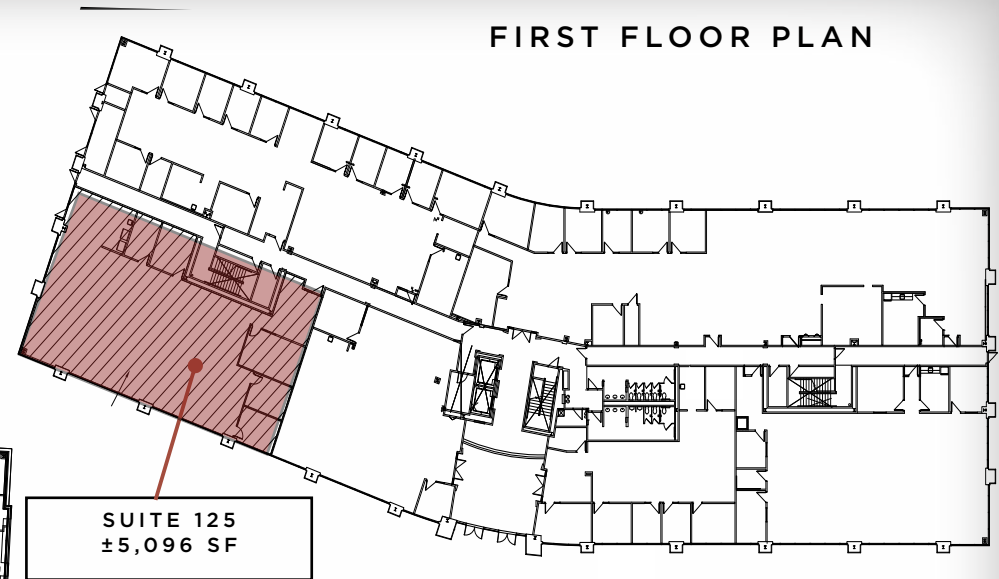
BUILDING INFO:

- » Built 2004
- » Total Building size: ±95,000 SF
- » C-2 Zoning
- » Cox & Century Link available

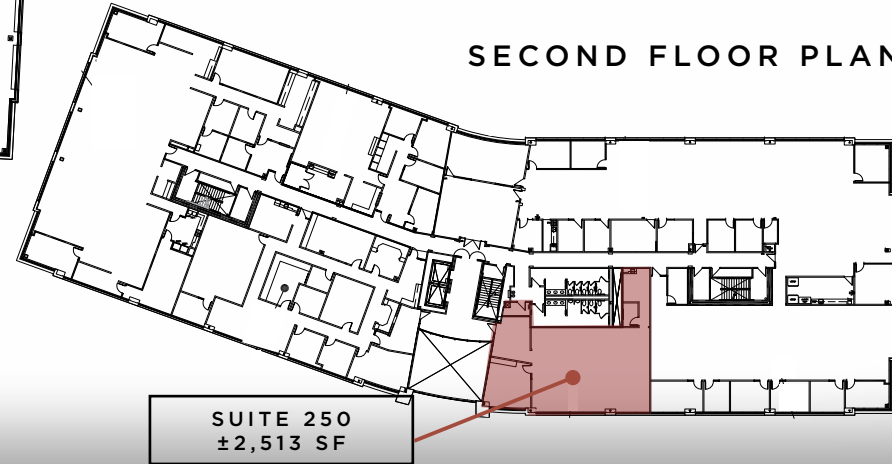
THIRD FLOOR PLAN



FIRST FLOOR PLAN



SECOND FLOOR PLAN



NOT TO SCALE

LEASING TEAM

ASHLEY BROOKS

Senior Vice President

+1 602 735 1758

ashley.brooks@cbre.com

JASMINA SUBASIC

Client Services Specialist

+1 602 735.5262

jasmina.subasic@cbre.com

